

# VERA DREAM BED ASSEMBLY INSTRUCTION



## Vendor Information




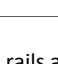
Vendor Name: LSMX1  
Vendor Code: V-005852

## Living Space Information

Vendor Collection: VERA DREAM NON STORAGE

ITEM	DESCRIPTION	QUANTITY
1	VERA DREAM HEADBOARD	1
2	VERA DREAM RAILS/SLATS	1
3	VERA DREAM FOOTBOARD	1



1	HEADBOARD	 X1
2	RAILS/SLATS	 X2  X1
3	FOOTBOARD	 X1

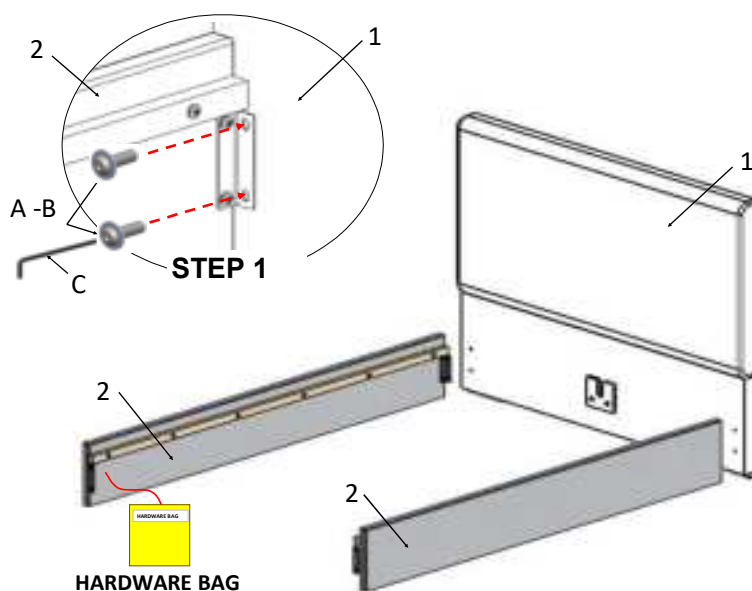
Hardware bag included in side rails and slat box with red ribbon to located.

A	5/16-18X1" SCREW BUTTON HEAD CAP	 X8
B	WASHER 5/16 PLAIN	 X8
C	3/16 SHORT ARM HEX KEY	 X2
D	5/16-18X1 1/2" SCREW BUTTON HEAD CAP	 X2 <small>REPLACEMENT</small>

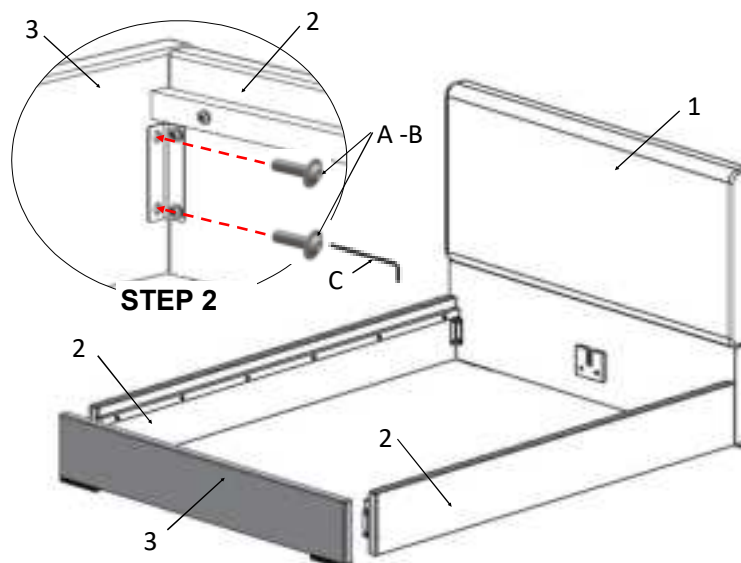
## VERA DREAM BED NON STORAGE



**STEP 1:** Attach side rails to headboard using Wrench(C), 4 Screws (A) and Washers (C).



**STEP 2:** Attach Footboard to side rails using Wrench(C), 4 Screws (A) and Washer (C).



# VERA DREAM BED ASSEMBLY INSTRUCTION



## Vendor Information

Vendor Name: LSMX1  
Vendor Code: V-005852

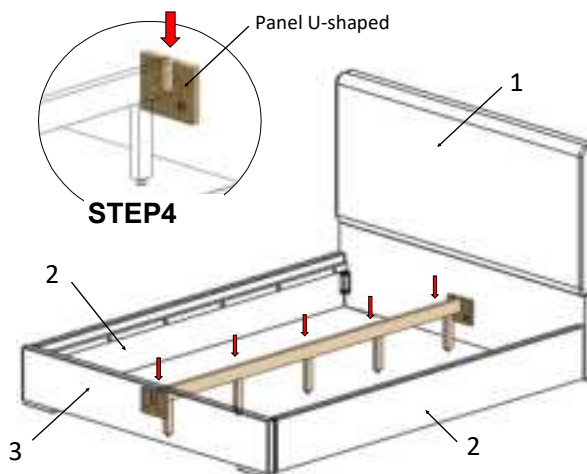
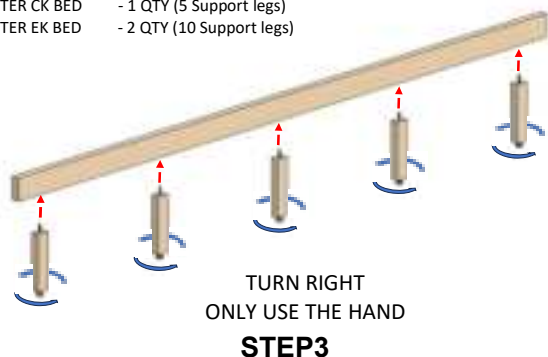
## Living Space Information

Vendor Collection: VERA DREAM NON STORAGE

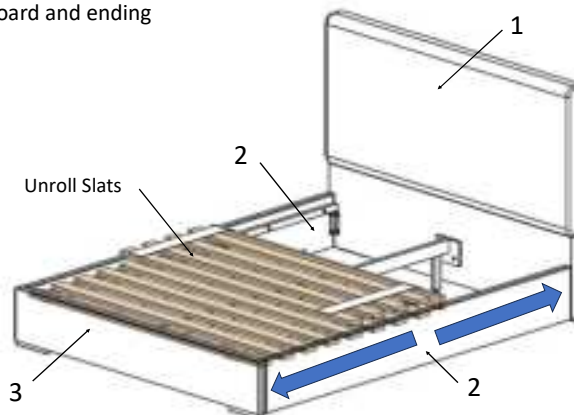
**STEP 3:** Attach the support legs with leveler to the center slat. Adjust the levers on bottom of support legs when necessary.

**STEP 4:** Place the piece from top to bottom into the U-shaped slot.

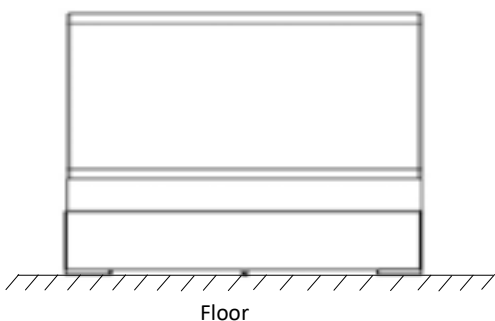
CENTER QUEEN BED - 1 QTY (5 Support legs)  
CENTER CK BED - 1 QTY (5 Support legs)  
CENTER EK BED - 2 QTY (10 Support legs)



**STEP 5:** Unroll the slats onto the center slat starting at the footboard and ending at the headboard.



**STEP 6:** Verify the slats are installed properly the legs are perpendicular to the floor for full support.



# VERA DREAM WINGS ASSEMBLY INSTRUCTION



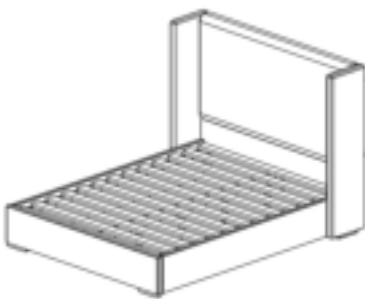
Vendor Information	
Vendor Name:	LSMX1
Vendor Code:	V-005852

Living Space Information	
Vendor Collection:	VERA DREAM

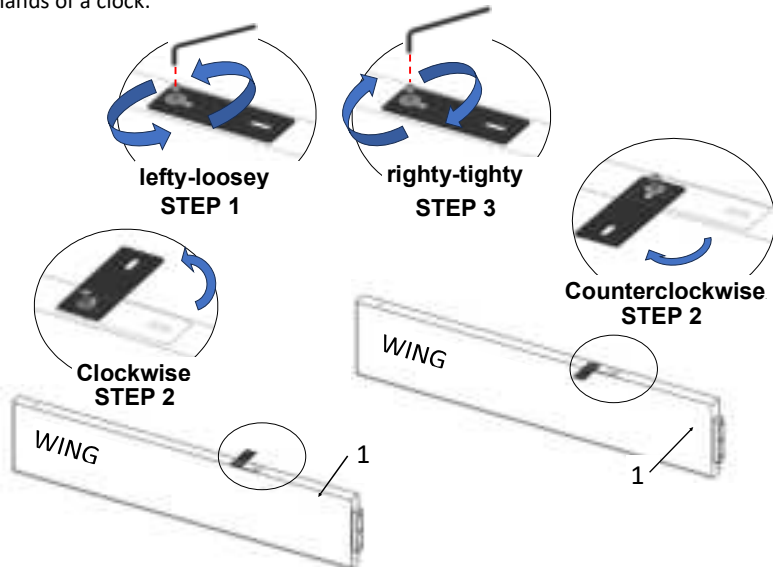
ITEM	DESCRIPTION	QUANTITY
1	VERA DREAM WINGS	2

LIVING SPACES		
1	WINGS	X2
Hardware bag included with red ribbon to located.		
A	SLOT BRACKET	X2
B	CORNER BRACKET	X2
C	5/16-18X1-1/4" SCREW BUTTON HEAD CAP	X8
D	WASHER 5/16 PLAIN	X8
E	3/16 SHORT ARM HEX KEY	X2

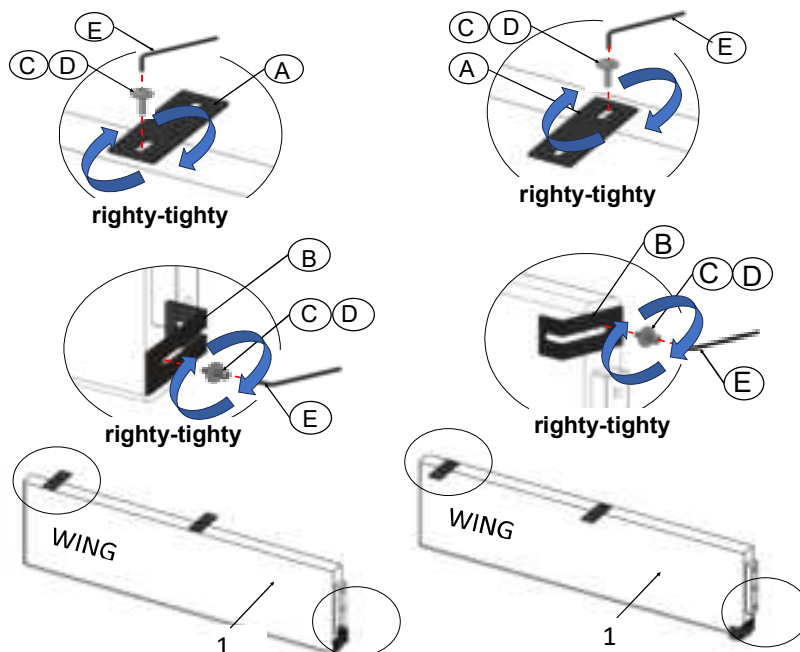
## VERA DREAM BED WITH WINGS



**STEP 7:** Loosen the screw (C), using a wrench (E) and turn it counterclockwise.  
**STEP 8:** Turn a plate clockwise and one for the counterclockwise.  
**STEP 9:** To tighten the screw (C) turn the wrench (E), following the direction of the hands of a clock.



**STEP 10:** Attach brackets (A & B) in the holes on the back and under the wings, using wrench(E), screw (C), and flat washers (D), following the direction clockwise.



# VERA DREAM WINGS ASSEMBLY INSTRUCTION



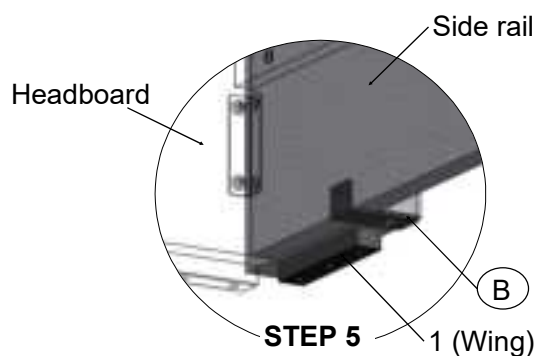
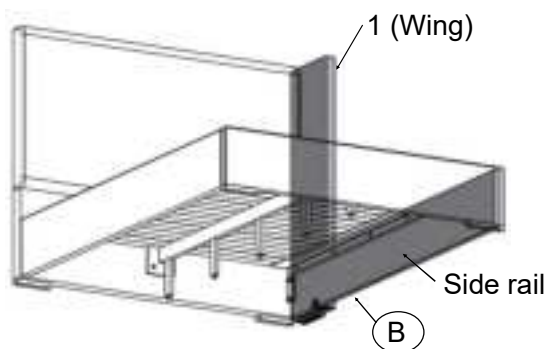
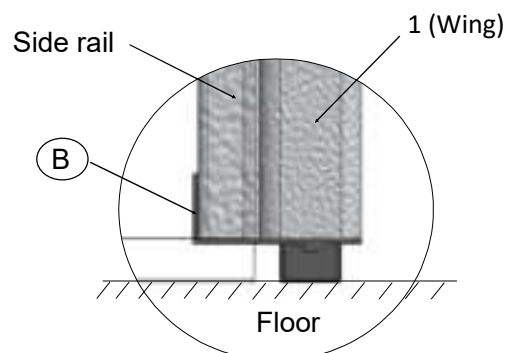
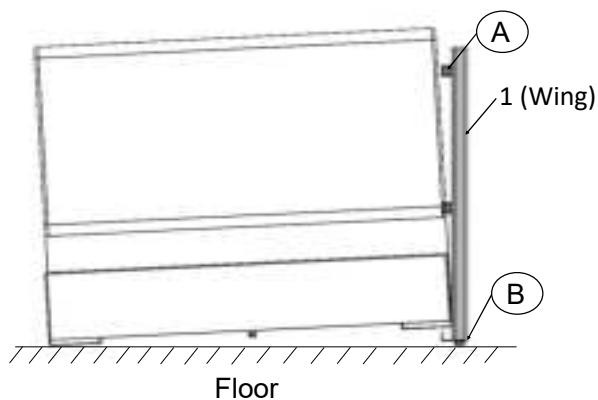
## Vendor Information

Vendor Name: LSMX1  
Vendor Code: V-005852

## Living Space Information

Vendor Collection: VERA DREAM

**STEP 11:** Raise bed to put inside the side rail of wing bracket.



**STEP 12:** Attach bracket (A) to headboard, using wrench(E), 4 screws (C), and flat washers (D), following the direction of the hands of a clock.

