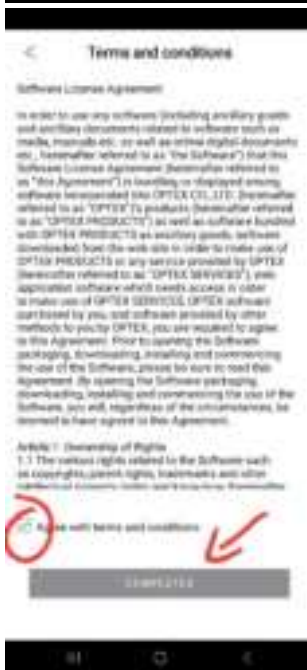
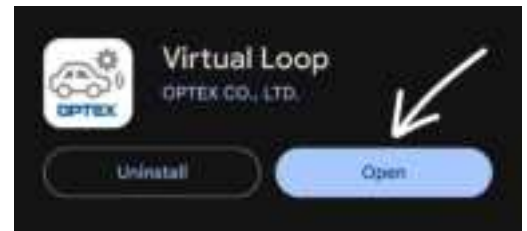
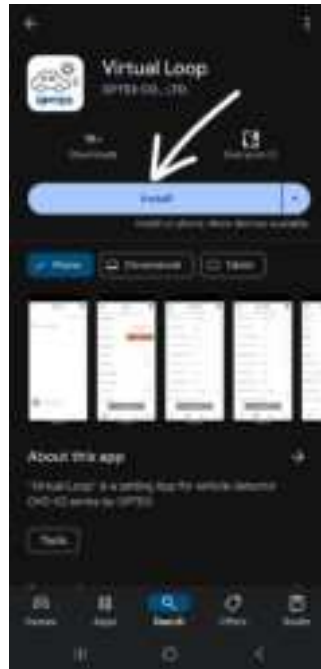


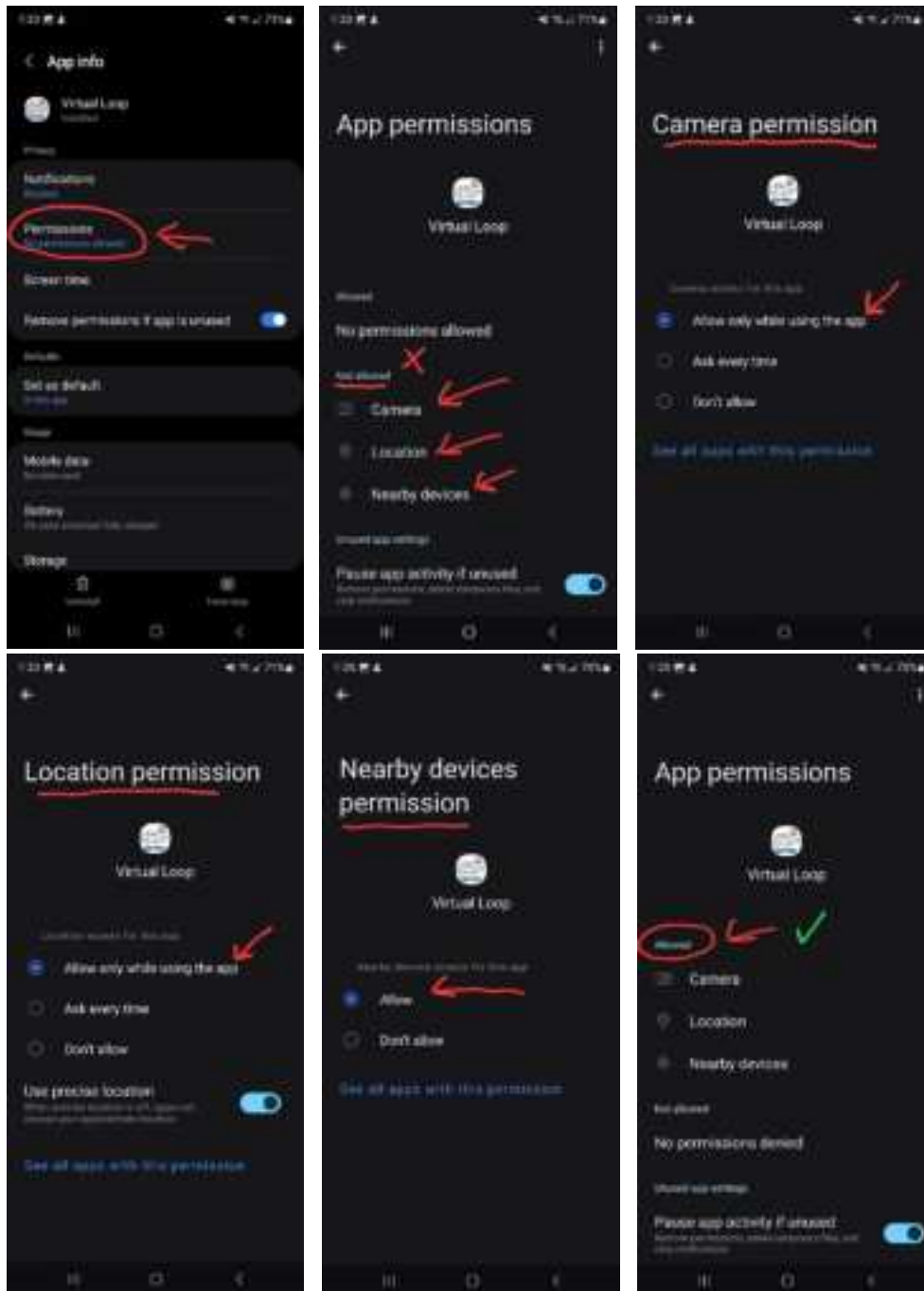
OVS-02GT Program Quick Start Guide

ANDROID

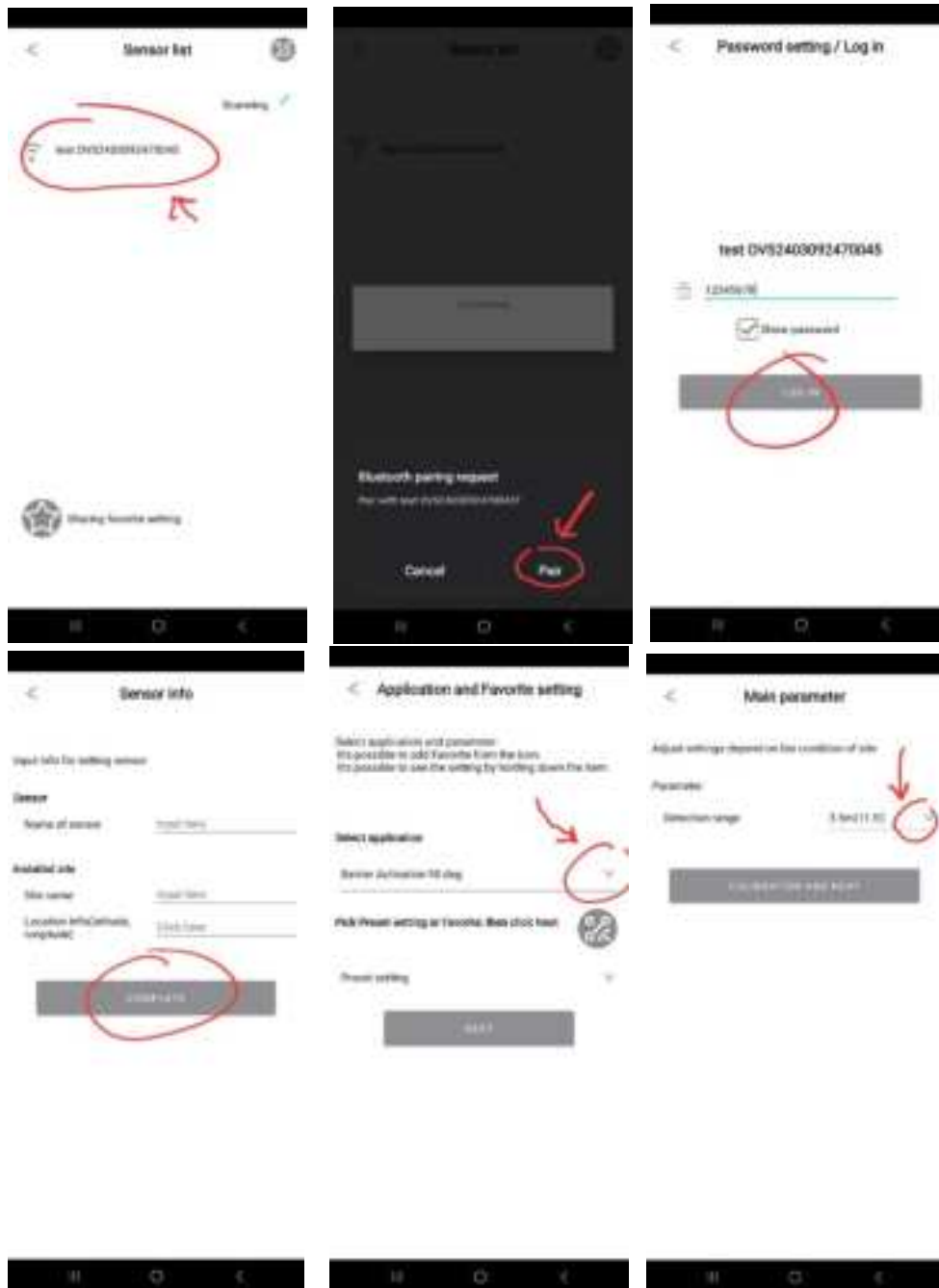
- **STEP 1:** Download app, and Open OPTEX virtual loop (white icon with a car)



- **STEP 2:** Allow permissions

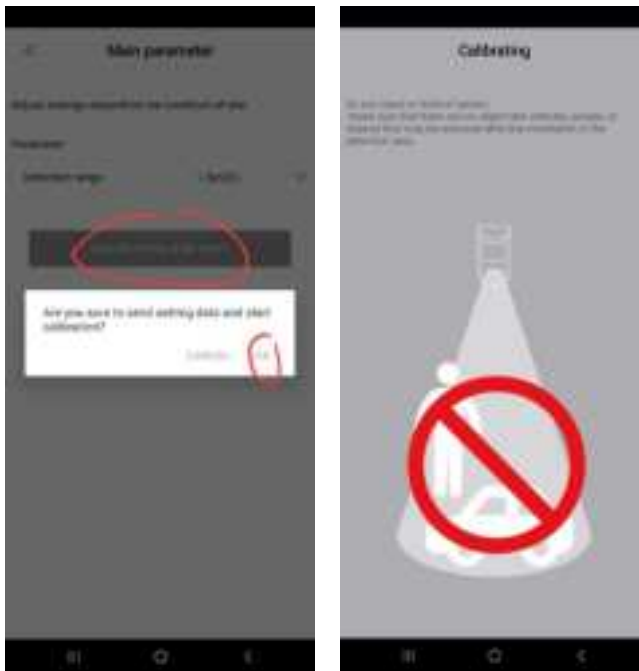


- **STEP 3:** Sensor list, pick the sensor you want to program.

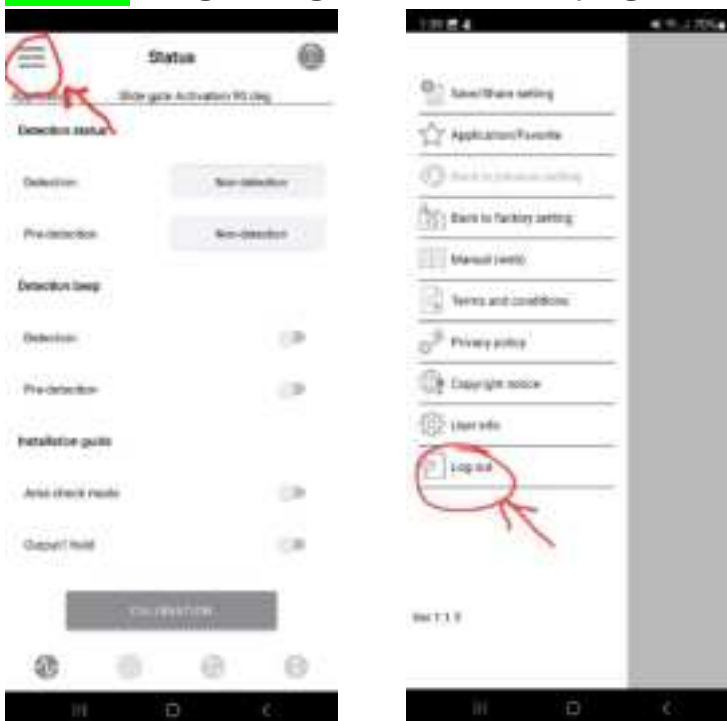


***Note:** Input 8-digit password, Default: 12345678

- **STEP 4:** Calibrate, (*Note: Clear area before calibrating. If sensor is still flashing blue, calibration did not complete)



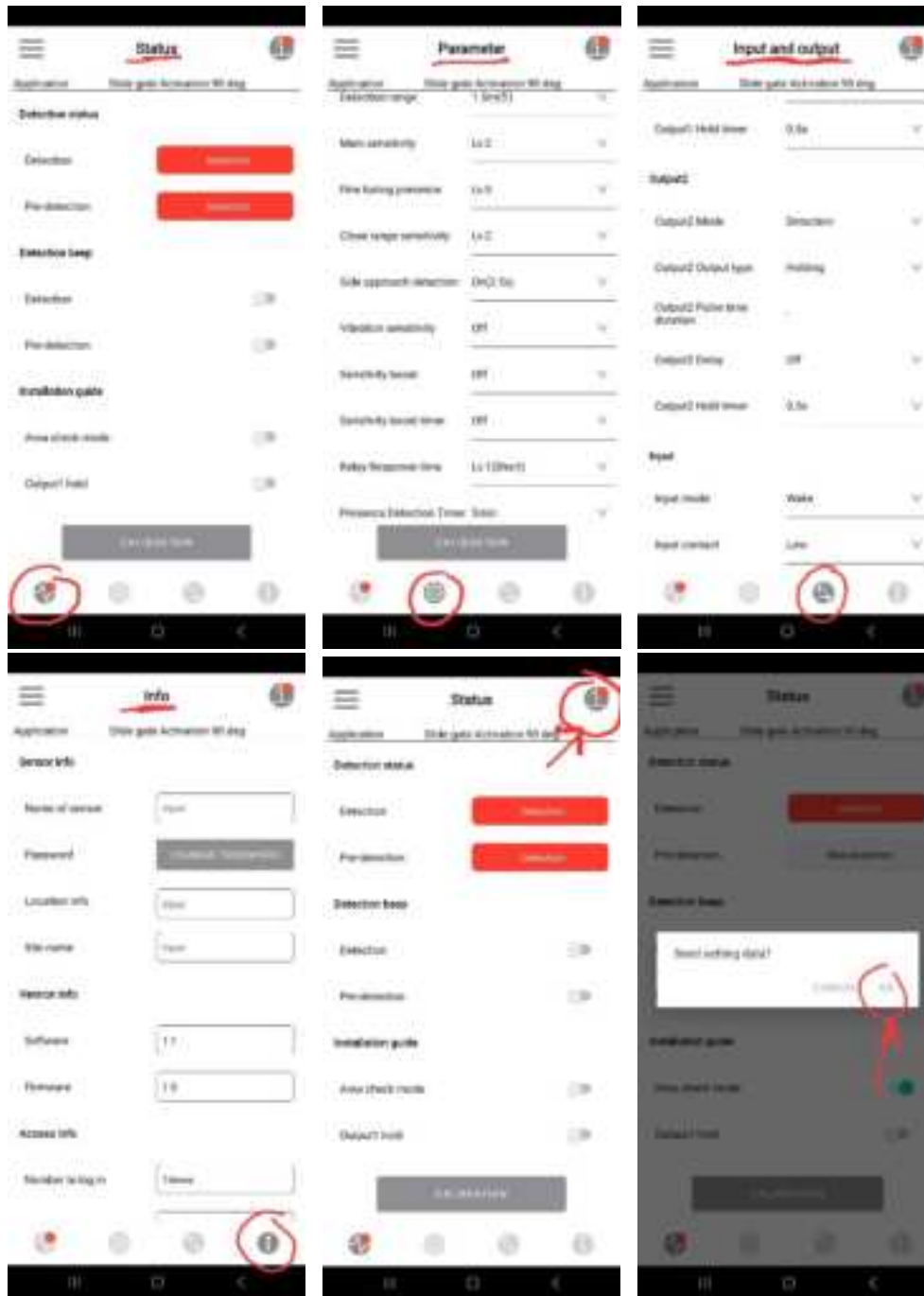
- **STEP 5:** Log out, go to the main page, the 3 lines at top left.



- **STEP 6:** Test the sensor

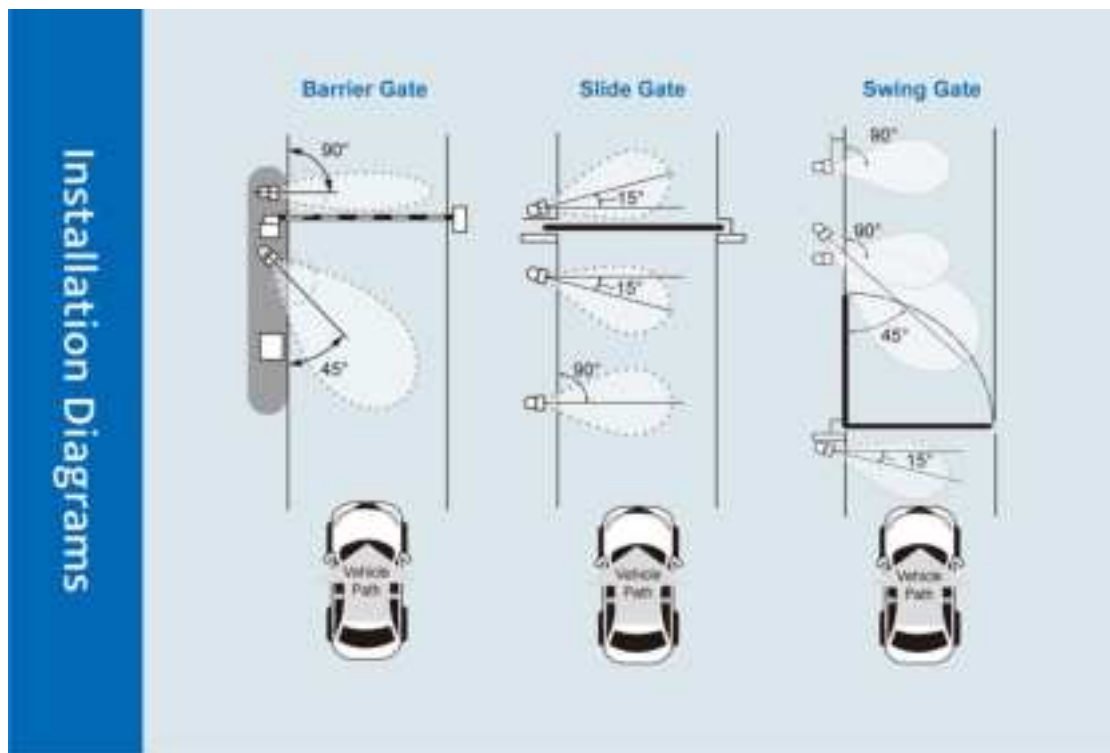
Note: relay will be in the close state until programed.

- If further programming is needed, reconnect to the sensor and fine tune the settings. Repeat until desired result is achieved.

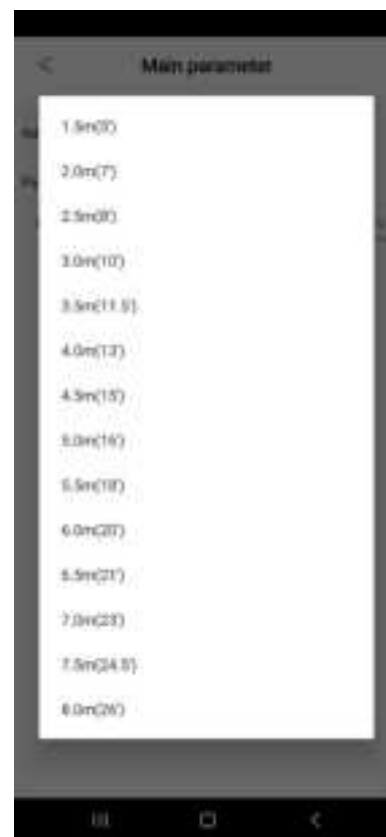


*Note: If you make any changes, tap the arrow up icon at the top right-hand corner and make sure to calibrate before testing.

APPLICATIONS



Selecting in APP



- **Optional:** if you want the indicator on the sensor on, go to the input/output tab, the 2 arrows pointing in opposite directions on the bottom of the app page. Turn the indicator switch on, top right arrow with a red dot touch on that, send the information.