

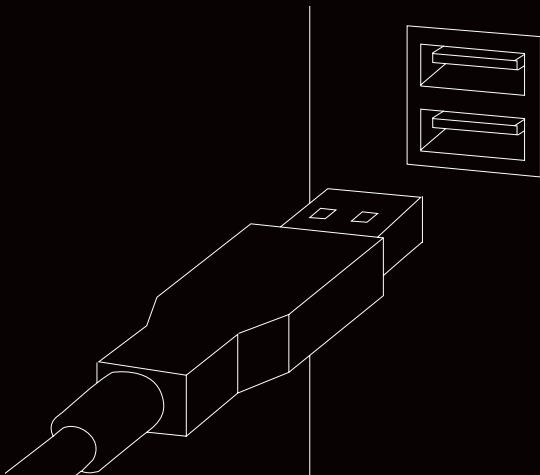
K4 KEYBOARD SERIES MANUAL



xtrfy

PLUG AND PLAY

Connect the K4 to the USB port. Driver installation starts automatically.



SETTINGS AND FUNCTIONS

The K4 features a range of customization options and convenient quick keys. All settings are made directly on the keyboard, by pressing the FN key + the desired setting key.

RGB ILLUMINATION



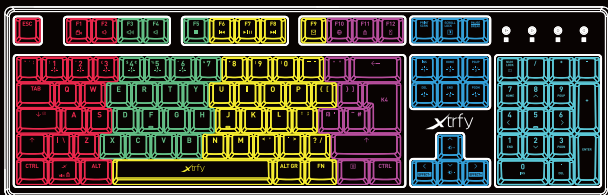
Press FN + INS to start a cycle of shifting backlight colors.



Press FN + HOME repeatedly to switch between 7 different background colors.



Press FN + PGUP for LED illumination in 6 color zones. To set the color of each zone, press FN + PGUP again. When the NUM, CAPS and SCROLL lights in the upper right corner blink, press FN + the numbers 1–6 repeatedly to adjust the colors. When you're done, press FN + PGUP again.





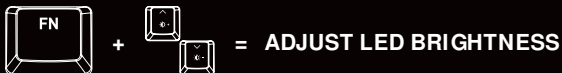
Press FN + DEL repeatedly to switch between two different wave effects.



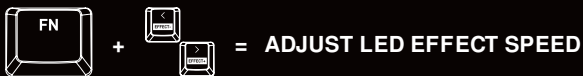
Press FN + END once to start the 7-color breathing effect cycle, and twice to lock the breathing effect at the current color.



Press FN + PGDN to start a multi-color typing effect. (Visible when typing.)




Press FN + the up/down arrow keys to increase/decrease the brightness of the LED lighting.



Press FN + the left/right arrow keys to decrease/increase the speed of the LED effects.

OTHER USEFUL KEYS AND SHORTCUTS

FN + 	= Lock Windows key
FN + F1–F8	= Media controls
FN + F9	= E-mail
FN + F10	= Web browser
FN + F11	= Lock all keys
FN + F12	= Calculator

TROUBLESHOOTING

- » Make sure the K4's USB connector is firmly attached to your computer's USB port.
- » Connect to another USB port.
- » Connect to another computer.
- » Factory reset the keyboard by pressing and holding the FN key + backspace for 10 seconds.

NEED BACKUP?

If you have any questions, we're never more than an email away. Contact us at support@xtrfy.com

CHECK OUT MORE XTRFY PRODUCTS AT [XTRFY.COM](https://xtrfy.com)

**DESIGNED IN
SWEDEN**



xtrfy