

# GENESIS Commercial R-32 Unit

## Quick Installation Guide - Package

### MODEL NUMBERS

PRV15BT-TFFT-EV\*  
PRV17BT-TFFT-EV\*  
PRV15BT-TVFT-EV  
PRV17BT-TVFT-EV

Under/Over Unit

\* Front discharge Air Handling  
Option shown for illustration  
purposes only.



# A2L

The system is charged with flammable refrigerant, safety checks are necessary to ensure that the risk of ignition is minimised.



### IMPORTANT NOTE:

This document contains installation information only. Do not attempt to install the unit without reading and understanding the complete installation manual. The complete **Installation and Commissioning Guide (0525-147)** can be accessed by scanning the QR Code or by visiting [docs.actronair.com.au](https://docs.actronair.com.au).



	This symbol shows that this appliance uses a flammable refrigerant. If the refrigerant leaks and is exposed to an external ignition source, there is a risk of fire.
	This symbol shows that the Operation Manual should be read carefully.
	This symbol shows that a service person should be handling this equipment with reference to the Installation Manual.
	This symbol shows that there is information included in the Operation Manual and Installation Manual.

## 1. Codes, Regulation and Standards

The installer and/or contractor assumes responsibility to ensure that unit installation complies with the relevant council, state / federal codes, regulations and building code standards. All electrical wiring must be in accordance with national wiring regulations and all wiring connections to be as per electrical diagram provided with the unit.

## 2. Installation Safety Instructions

- Only licensed HVAC technicians\* should install and service this air conditioning equipment.
- All electrical work must be carried out by a qualified technician. Make sure all wiring is in accordance with local wiring rules. Wiring connections should be made in accordance with the wiring diagram provided.
- Prevailing WH&S regulations must be observed and will take precedence to the safety instructions contained on this unit.
- Ensure that unit installation complies with relevant council regulations and building code standards.
- Always wear appropriate PPE, remove any dangling jewellery and protect long hair.
- Make sure that safety guards and panel covers are always firmly secured and not damaged before and during operation of unit.
- This appliance is not intended for use by young children, persons with a lack of experience and knowledge, or infirm persons unless they have been adequately supervised by a responsible person to ensure that they can use the appliance safely. Young children should be supervised to ensure that they do not play with the appliance.
- Installer must incorporate a means of electrical disconnection (isolator) in the sub mains fixed wiring in accordance with the latest edition of the AS/NZS 3000 (also known as Australian Wiring Rules).
- Ensure all power and control cables are firmly secured. Use the cable ties provided in the control box.
- \* Qualifications required will be appropriate Electrical, Refrigeration and Refrigerant Handling License and Training dependent on local State/Territory regulations.

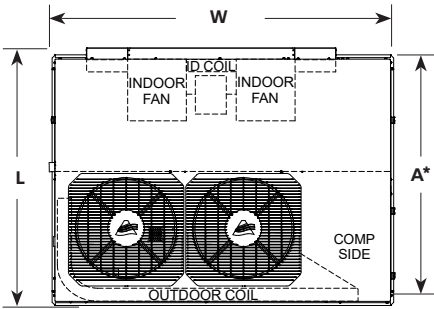


### 3. Unit Dimensions

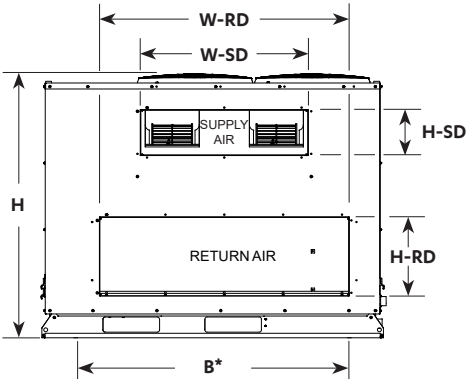
**Notes:**

Model shown below is for illustration purposes only.

\*Mounting Distance Base Foot (Centre to Centre)



**TOP VIEW**



**FRONT VIEW**

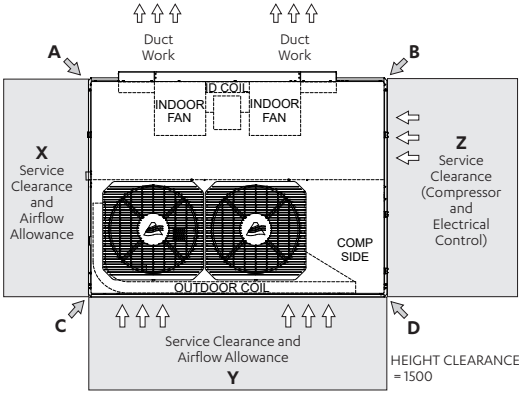
Model Number	Unit Dimensions (mm)				
	H	W	L	A*	B*
PRV15BT-T	1166	1523	1136	1036	1208
PRV17BT-T					

Model Number	Supply Duct	Return Duct
	H-SD x W-SD	H-RD x W-RD
PRV15BT-T	200 x 740	348 x 1100
PRV17BT-T		

**NOTES:**

1. Do not scale drawing. All dimensions are in **mm** unless otherwise specified. Refer to corresponding unit dimensional drawing for mounting hole details.
2. Service Access Areas and Spaces for Airflow Clearances are suggested minimum based on the condition that the spaces around the units are free from any obstructions and a walkway passage of 1000 mm between the units or between the unit and the outside perimeter is available.
3. Minimum service access areas and spaces for airflow clearances are responsibilities of the installer, ActronAir will not be held liable for any extra charges incurred due to lack of access and space for airflow.
4. Under all circumstances, condenser air must not recirculate back onto condenser coil. Keep all clearance free of any obstruction.
5. MTG C-C DIST = Mounting Centre to Centre Distance.
6. Use M12 bolt for feet mounting.
7. Installation of this unit should be in accordance with AS/NZS 60335.2.40.
8. Additional safety provision maybe needed such as leak detector sensor and/or ventilation to meet the minimum area requirement. For more details refer to Annex GG and Annex HH of the above standard.
9. Refer to R-32 Safety Manual for minimum required area of installation.

### 4. Unit Weight, Airflow and Service Access Clearances



**Airflow and Service Access Clearances**

Model Number	Airflow and Service Access Clearances				No. of Comp
	A-B	X	Y	Z	
PRV15BT-T	Duct Work	300	400	600	1
PRV17BT-T					

**Unit and Corner Weights**

Model Number	Corner Weights (kg)				Total Weight (kg)
	A	B	C	D	
PRV15BT-T	46	63	57	67	233
PRV17BT-T	49	66	59	68	242

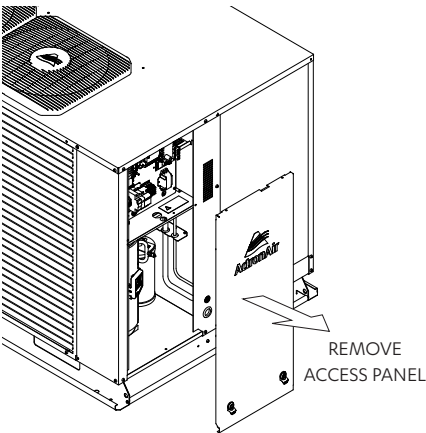
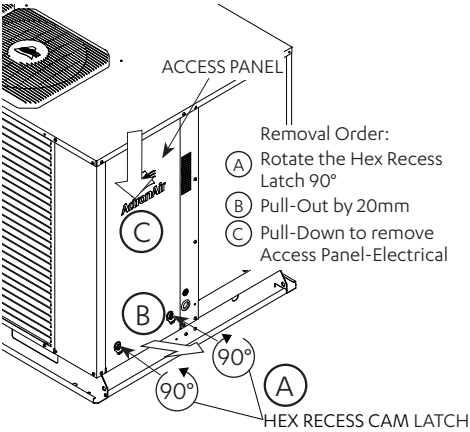
5. Cable Size and Circuit Breaker Size Requirement

Model Number	Circuit Breaker Size Amps
PRV15BT-T	16.0
PRV17BT-T	16.0

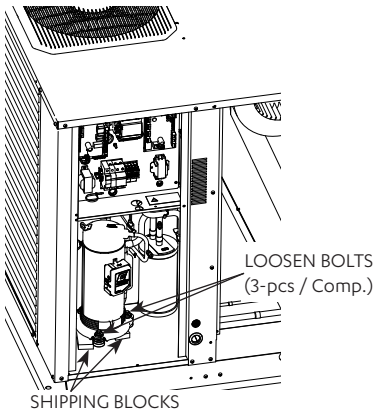
Refer to the latest edition of AS/NZS 3000 or Australian/New Zealand Wiring Rules to determine required cable size.

6. Outdoor Unit Preparation

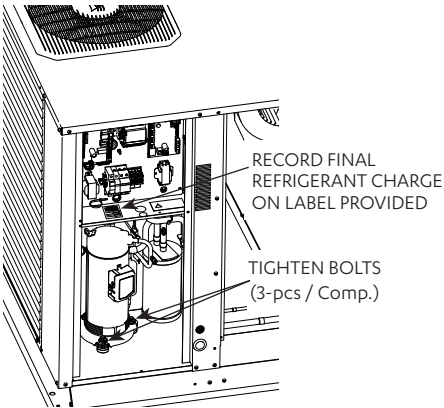
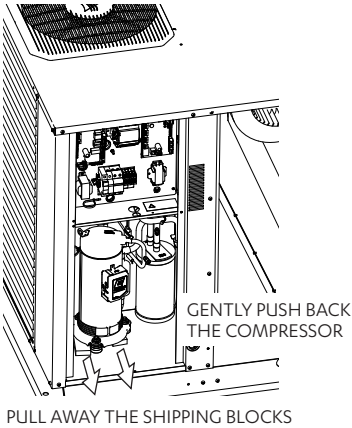
- 1. Rotate the Hex Recess 90 degrees using 8mm allen key.
- 2. Remove Access Panel-Electrical as illustrated below.
- 3. Remove the Shipping Blocks before installing Interconnection Field Pipes.
  - a. Loosen the 3 x compressor feet bolts.



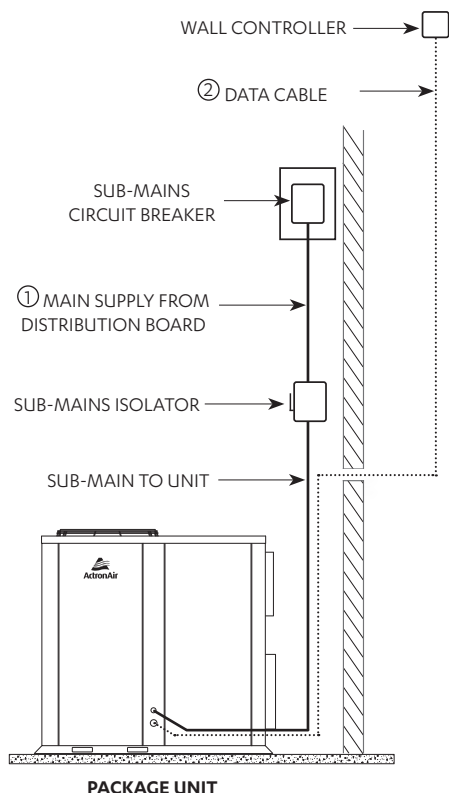
- b. Remove Shipping blocks as shown below.
- c. Re tighten the 3 x compressor feet bolts (12 to 14Nm).



7. Electrical Connections



- ① **MAINS WIRING (400VAC)**  
(Three Phase + Neutral + Earth) 50Hz
- ② **DATA CABLE TO WALL CONTROLLER**  
(Cat5E UTP (AWG24) Data Cable)



#### Notes:

- Diagram shown is a general representation only. Please refer to Wiring Diagram at the back of access panel and Installation and Commissioning Guide for detailed instructions.
- Sub-mains circuit breaker, isolator and all cables needed are provided by the installer.

## 8. Indoor Fan External Static Pressure Range Available

Model Number	External Static Pressure Pa
PRV15BT-T	0-250
PRV17BT-T	0-250

**Note:** Available external static pressure (Pa) within the airflow range.

## 9. Refrigeration System

Installation of this unit should be in accordance with AS/NZS-60335.2.40. Ensure that the minimum required release height (with respect to system's total R-32 refrigerant charge and minimum room size of the smallest conditioned area) is satisfied.

If the smallest room that needs to be conditioned is smaller than the required minimum room area ( $A_{min}$ ), additional safety measures must be implemented according to AS/NZS-60335.2.40. For further details, please refer to Annex GG and Annex HH of the AS/NZS-60335.2.40 standard. Refer to the R-32 Safety Manual. Refer to Table Required Minimum Room Area ( $A_{min}$ ).

If the maximum refrigerant amount exceeds 15964 grams, the installer must implement additional control measures in accordance with AS/NZS 60335.2.40 standard for the installation to be deemed acceptable.

Examples of control measures include, but are not limited to, ventilation, shut-off valves, and safety alarms. These control measures are not provided by ActronAir and must be determined by the installer based on the specific requirements of each installation.

