



QUICK CAST BOAT SHADE OEM INSTALLATION MANUAL

TABLE OF CONTENTS

Introduction	2
Safety	3
Safety Warnings	3
Important Notifications	4
Resources Required	4
Preparation	4
Parts and Quantities	4
Installation Time Frame	4
Parts List	5
Installation	6
Quick Cast Shade Removal	8
Maintenance	9
Regular Cleaning	9
Canvas	9
Long-Term Storage	9
Troubleshooting	10
Specifications	10
Notes	11

Introduction

Invented by boaters for boaters, Lippert is the new standard for shade on boats. Our new Quick Cast shade system is the latest in our shade line. The Quick Cast Shade system attaches to the bottom of two rod holders on your boat's T-Top or Hard Top. With the Quick Cast shade, you will have the shade you need with very little set up time.

Lippert is committed to improving sun safety on boats with shade systems that give boaters more sun protection... where and when they need it.

Additional information about this product can be obtained from [lci1.com/support](https://support.lci1.com/support) or by downloading the free LippertNOW app. The app is available on Apple App Store® for iPhone® and iPad® and also on Google Play™ for Android™ users.

Apple App Store®, iPhone®, and iPad® are registered trademarks of Apple Inc.

Google Play™ and Android™ are trademarks of Google Inc.

For additional information on this product go to: <https://support.lci1.com/manual-boat-shade>

NOTE: Images used in this document are for reference only when assembling, installing and/or operating this product. Actual appearance of provided and/or purchased parts and assemblies may differ.

Safety

Read and understand all instructions before installing or operating this product. Adhere to all safety labels. This manual provides general instructions. Many variables can change the circumstances of the instructions, i.e., the degree of difficulty, operation and ability of the individual performing the instructions. This manual cannot begin to plot out instructions for every possibility, but provides the general instructions, as necessary, for effectively interfacing with the device, product or system. Failure to correctly follow the provided instructions may result in death, serious personal injury, severe product and/or property damage, including voiding of the Lippert limited warranty.

WARNING

The "WARNING" symbol above is a sign that a procedure has a safety risk involved and may cause death or serious personal injury if not performed safely and within the parameters set forth in this manual.

WARNING

Failure to follow instructions provided in this manual may result in death, serious personal injury and/or severe product and property damage, including voiding of the component warranty.

WARNING

Always keep hands and loose clothing clear when extending/retracting the shade.

WARNING

Always wear OSHA-approved body, eye, ear and respiratory system protection.

WARNING

Before installing and operating the Quick Cast shade, be sure to read and understand the content and safety messages in this manual.

CAUTION

The "CAUTION" symbol above is a sign that a safety risk is involved and may cause personal injury and/or product or property damage if not safely adhered to and within the parameters set forth in this manual.

CAUTION

Always wear eye protection when performing service, maintenance or installation procedures. Other safety equipment to consider would be hearing protection, gloves and possibly a full face shield, depending on the nature of the task.

Safety Warnings

- Keep hands away from any potential pinch points.
- Keep clear of shade while extending and retracting.
- Keep shade clear of obstructions.

Important Notifications

- In the event of malfunction please visit <https://support.lci1.com/manual-boat-shade> and review applicable documentation before continuing to operate the system or making any repairs. You may also submit a service request via email at Contact Support/Lippert Customer Care Center.
- Do NOT attempt to repair shade on your own or you could risk voiding the warranty.
- Never disassemble the mounts without permission from Lippert factory or you will void warranty.
- Do NOT install the shade anywhere it will obstruct or interfere with the navigation lights or any other boat accessories.
- Improper tensioning can cause the shade system from operating normally.
- To protect the shade and components, always remove shade during inclement weather. Removing the shade when NOT in use will prolong the life of the canvas and components.
- Shade max load weight: 5 lbs. Do NOT exceed shade max load weight or product damage may occur.
- Refer to the Lippert website for maintenance and care procedures:
<https://support.lci1.com/manual-boat-shade>

WARNING

Shade must be stored while the boat is underway.

Resources Required

- Safety glasses/goggles
- Ratchet and socket set
- Electric or cordless drill or screw gun
- Drill bit set
- Phillips screwdriver
- Allen wrench set (standard)
- Utility knife
- Tape measure
- Extension cord
- Level
- Grease pencil
- Ladder
- Caulk
- 9/16" Wrench

Preparation

Parts and Quantities

Many of the provided parts are pre-assembled before shipping. This helps to ensure all necessary parts are included and checked for proper fit before delivery. Ensure all assembled parts are present in the shipping package BEFORE starting installation.

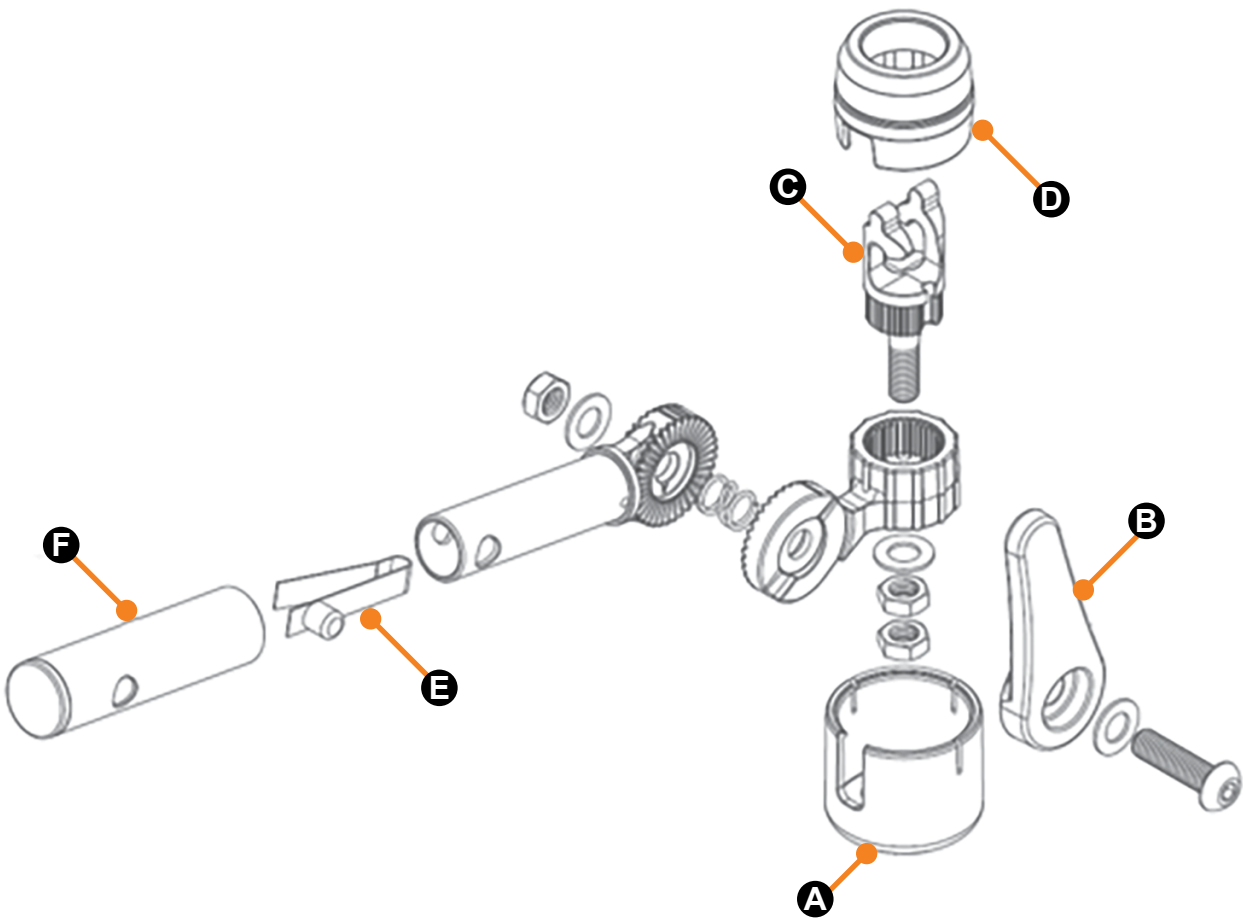
Description	Qty
Quick Cast Shade Instruction Manual	1
Quick Cast Shade Rod Holder Mounts	2
Quick Cast Shade Canvas	1
Eye Strap Stainless-Steel	2
Eye Strap Mounting Screws	4
Quick Cast Shade Poles	2
Quick Cast Shade Storage Bag	1
Quick Cast Shade pole Finishing Cap	2

Installation Time Frame

It is recommended that two people perform the installation. Depending on the type of T-Top or Hard Top the installation can take anywhere from 20–40 minutes.

The installer will need to ensure that he or she has all of the recommended tools that are needed for their installation. The installer needs to ensure that he or she follows all safety warnings in the manual.

Parts List



Callout	Part #	Description	MODEL
A	2024072069	Cover, Rod Holder	ALL
B	2024072066	Handle, Rod Holder Mount	ALL
C	2024072060	Insert, Hook	ALL
D	2024072068	Sleeve, Protective	ALL
E	2025016316	Spring-Pin, Single Round Head 3/8" x 3/8"	ALL
F	2025018577	Universal Rod Holder Cap	ALL

Installation

NOTE: Determining the centerline of the hardtop to position the shade.

1. Please ensure all parts and tools needed are on hand before proceeding with the installation.
2. Determine the two rod holders needed to mount the Quick Cast rod holder mounts.
3. Remove the two 3/8"-16 nuts and washer (Fig.1A) from the bottom of each Quick Cast rod holder.
4. With the 3/8"-16 nuts removed, attach the universal gimble hook (Fig.1B), with the mount to the rod holder gimble. (Do not release the mount, hold the mount in place and continue following the next steps)
5. While holding the gimble hook on the gimble, carefully rotate the mounts to face the aft port and starboard of the transom.
6. With the mounts oriented properly, re-attach the washer and one 3/8"-16 nut (Fig.1A) (Do not fully tighten).

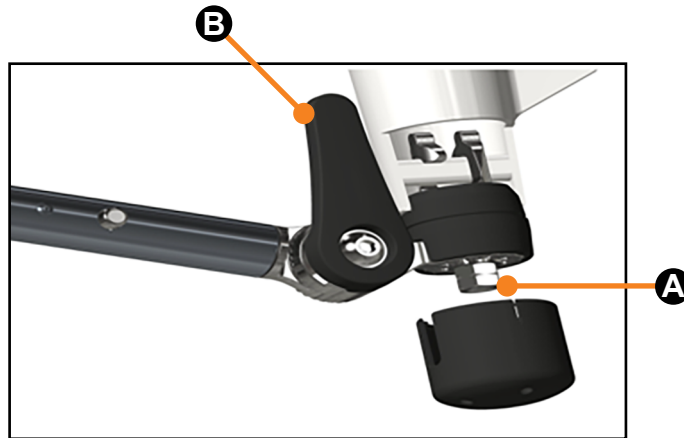


Fig.1

7. At this time attach the supplied shade poles (Fig. 2A) to the mounts (Fig. 2B).

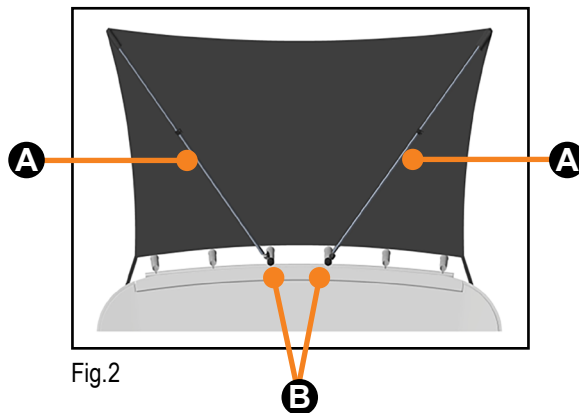


Fig.2

8. With the shade poles attached (Fig. 3A), attach the canvas pockets (Fig. 3B) to the end of the poles and extend the poles to half of the pole's extension.

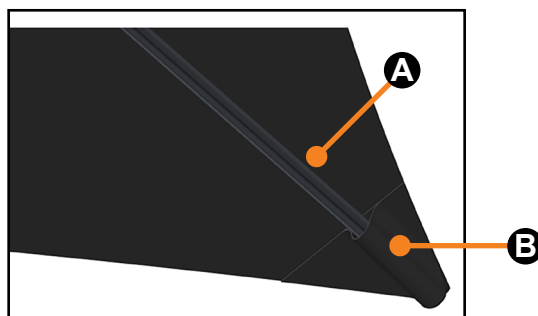
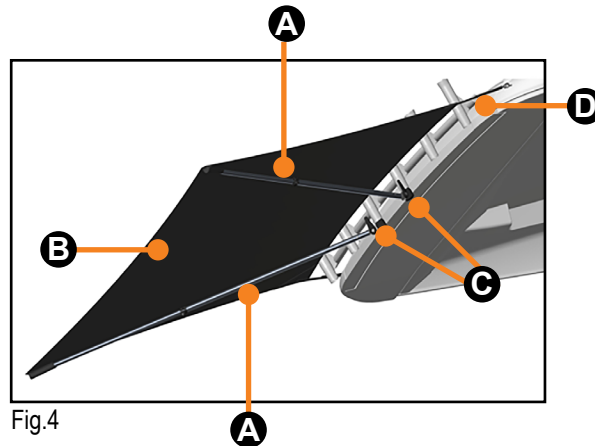
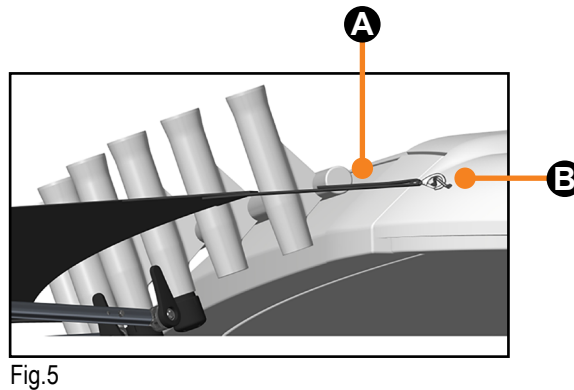


Fig.3

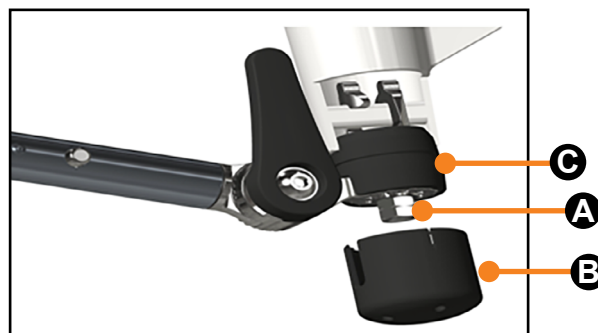
9. At this time grab the other end of the canvas and stretch the canvas towards the T-Top or Hardtop.
10. To ensure proper fit, extend the poles (Fig. 4A) until the rod holder side of the canvas (Fig. 4B) does not touch the rod holders (Fig. 4C), and the securing straps (Fig. 4D) have an acceptable mounting location on the structure. (The shade poles may need to adjust out further for this process)



11. Mark the mounting location of the eye straps and mount the eye straps onto the structure.
NOTE: Please ensure that the eye strap locations are symmetrically located from the center line of the structure (T-Top/Hardtop).
12. Attach the canvas securing straps (Fig. 5A) to the eye straps (Fig. 5B) and tension the canvas fully.



13. Fully tighten the 3/8"-16 nuts (Fig. 6A)(Maximum torque 10 ft/lbs).
14. With the first nut tightened, add the second 3/8-16 jam nut and fully tighten the nut onto the other nut.
15. With the system fully installed, attach the bottom cap (Fig. 6B) of the Quick Cast mount (Fig. 6C) by pressing upward until the cap locks into place.



Quick Cast Shade Removal

1. Loosen the shade pole collar (Fig. 7A) and retract poles (Fig. 7B) to relieve the tension on the canvas (Fig. 7C).

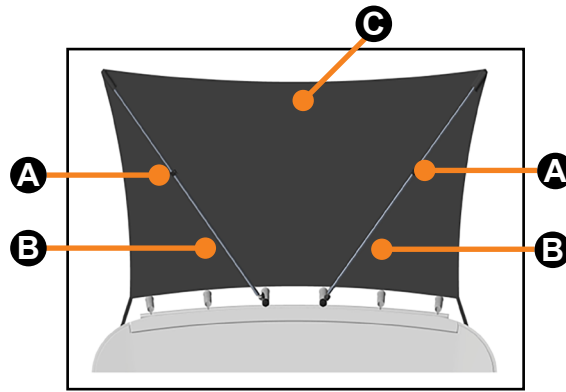


Fig.7

2. Unclip the securing straps (Fig. 8A) from the eye straps (Fig. 8B) on the structure.

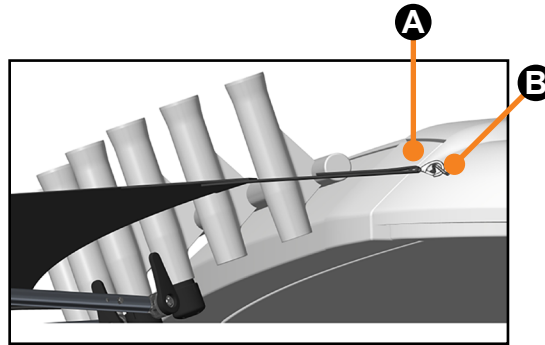


Fig.8

3. Remove the canvas (Fig. 9A) from both of the shade mount poles (Fig. 9B).

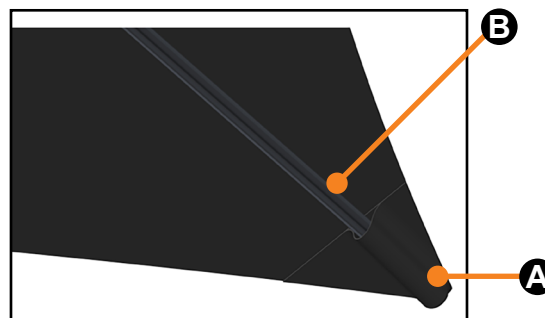


Fig.9

4. Roll the canvas up tightly and store in the Quick Cast Shade bag.
5. Unclip the shade mount poles from the shade mounts.
6. Shorten the shade mount poles to their shortest length.
7. Store the shade mount poles also in the Quick Cast Shade bag.
8. Attach shade pole finishing caps to the rod holder mounts.

NOTE: The Shade mounts do not need to be removed once they have been set in their desired location.

NOTE: The mount arms can be rotated into a preferred stowed position.

Maintenance

Lippert recommends following basic care and maintenance of Quick Cast shade components to maintain peak performance and prolong the life of your sunshade system.

Regular Cleaning

We recommend using the cleaning product Nev-Dull® Magic Wadding Polish for cleaning SureShade system Stainless-Steel components and soap and water for the aluminum components. Petroleum-based cleaners and abrasive metal cleaners should not be used.

To clean, extend the shade fully and wipe down all Stainless-Steel components with the Nev-Dull polish. Then, use a rag to wipe off any excess and polish. With a soft rag, use soap and water to gently wash the shade poles.

After washing, completely rinse the shade poles. Lippert also recommends flushing the inside of the shade poles with fresh water, to prevent the build up of salt or any other contaminants.

Canvas

NOTE: Under no circumstances should the canvas supplied with any Lippert Shade system ever be placed in a washing machine.

Lippert sunshade systems use Marine grade fabrics for canvas, and we recommend following basic canvas care and cleaning instructions to prolong the life of the canvas.

Basic canvas care includes:

- General, light cleaning with a hose on a monthly basis with clear water to remove debris.
- A thorough cleaning every 2-3 years, which may include fabric guard and/or mildew treatments.
- Conduct an annual inspection of your canvas to ensure that all threading is intact.
- A pull test on the thread to confirm that threading has not become dry-rotted from the elements.
- Do NOT exceed the maximum weight load limit of 5 lbs.

Long-Term Storage

Lippert sunshade systems are built with quality marine-grade construction and materials; however, just like other parts of your boat, Lippert canvas systems need to be shielded from snow and other harsh winter weather conditions to protect the canvas and mechanical components.

Lippert recommends that customers take proper precautions to avoid damage during winter storage (or ground transportation for winter storage), which include fully retracting and securing the Lippert sunshade system and properly tar-ping or shrink-wrapping your boat.

Many boaters transport their boats to a storage location or a warmer climate during the winter months. To ensure that the Lippert Shade system is properly transported and to avoid potential damage.

Troubleshooting

What is Happening	Why?	What Should Be Done?
Shade canvas is loose.	Shade poles are not extended forward to aft.	Extend both shade poles until the shade is fully tightened.
	Shade poles are not pointed outward Port and Starboard enough.	Ensure both poles are at the same outward angle. Increase angle if necessary
Shade mount is loose or locking handle is loose.	The locking nuts are loose.	Re-tighten the locking nuts.
	Handle hardware is loose.	Re-tighten the handle hardware.
Shade poles not locking.	Locking hardware is loose.	Tighten the locking hardware.

Specifications

Functional Specifications	
Extension length	56" (Min.) Length and Width can be customized
Width	72" (Max.) per OEM request
Hardware Specifications	
Mount material	316SS
Extension Arm material	Aluminum or Carbon Fiber
Canvas	Marine-grade Polyester
Structural Specifications	
Maximum wind speed	10 mph
Maximum weight displacement	5 lbs. across framework
Deflection	Less than 3"

Notes

[illegible]



The contents of this manual are proprietary and copyright protected by Lippert. Lippert prohibits the copying or dissemination of portions of this manual unless prior written consent from an authorized Lippert representative has been provided. Any unauthorized use shall void any applicable warranty. The information contained in this manual is subject to change without notice and at the sole discretion of Lippert. Revised editions are available for free download from lippert.com.

Please recycle all obsolete materials.

For all concerns or questions, please contact Lippert
Ph: 432-LIPPERT (432-547-7378) | Web: lippert.com | Email: customerservice@lci1.com