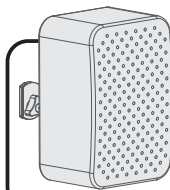
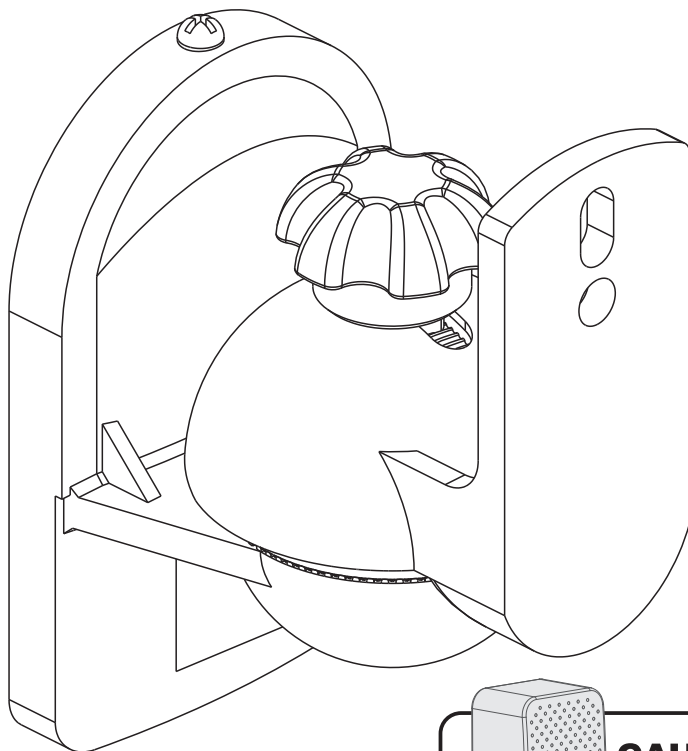




Speaker Wall Mount



CAUTION!

Do not hang Large size speakers from the brackets. Avoid the risk of instability of the center of gravity !

SWM202 / SWM402 / SWM602
SWM202-W / SWM402-W / SWM602-W



www.walielelectric.com



support@walielelectric.com



1-844-SATTler (18447288537)

WARNING!

If you do not understand these directions, or if you have any doubts about the safety of the installation, please call a qualified technician. Check carefully to make sure there are no missing or defective parts. Improper installation may cause damage or serious injury. Do not use this product for any purpose that is not explicitly specified in this manual. Do not exceed weight capacity. We cannot be liable for damage or injury caused by improper mounting, incorrect assembly or inappropriate use.



TIPOVER WARNING

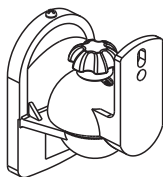
**SERIOUS OR FATAL CRUSHING INJURIES CAN OCCUR FROM TIPOVER.
TO HELP PREVENT TIPOVER:**

- NEVER ALLOW CHILDREN TO CLIMB, STAND, HANG, OR PLAY ON ANY PART OF MONITOR OR STAND.
- USE TIPOVER RESTRAINT OR ANCHOR STAND TO WALL.

USE OF TIPOVER RESTRAINTS MAY ONLY REDUCE, BUT NOT ELIMINATE RISK OF TIP OVER.

SMALL PARTS- NOT FOR CHILDREN UNDER 3 YEARS. ADULT SUPERVISION IS REQUIRED.

Supplied Parts List



SWM202
A (x2)



M5x12 Bolt
B (x4)



M6x12 Bolt
C (x2)



1/4" -20x1/2" Bolt
D (x2)



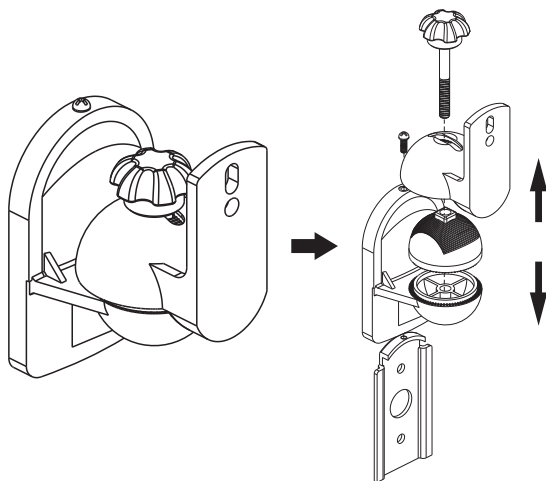
ST4.2X25 Screw
E (x4)



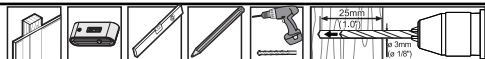
Φ 6X25 Anchor
F (x4)

Step 1

- Make sure that the supporting surface will safely support the combined load of the equipment and all attached hardware and components.
- Tighten wood screws firmly but do not overtighten. Over tightening can damage the screws, greatly reducing their holding power.
- Make sure that mounting screws are anchored into the center of the studs. The use of an "edge to edge" stud finder is highly recommended.

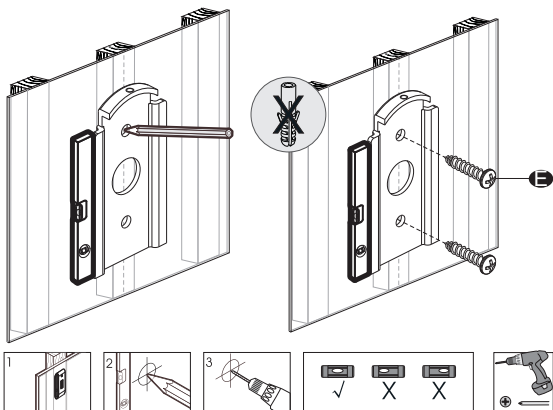


Step 2



Option A : Wood Stud Mounting

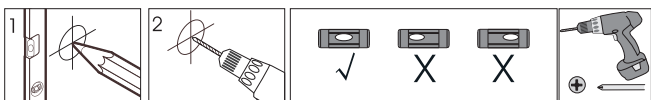
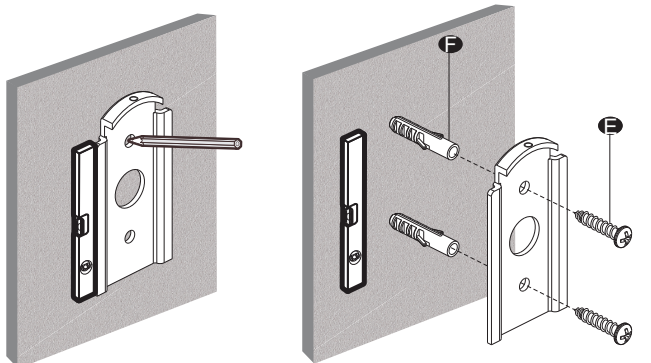
- Use a stud finder to locate the edges of the studs. Using an edge-to-edge stud finder is highly recommended based on their edges and draw a vertical line down each stud's center.
- Place metal wall plate on the wall as a template. And mark the center of the two mounting holes. Make sure that the mounting holes are on the stud centerline.
- Drill two 1/8" (3mm) dia. Holes 1" (25mm) deep. Secure it using two screws (part -). Make sure that the wall plate is level as shown in the figure.



Option B : Solid Brick and Concrete Wall Mounting

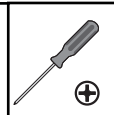
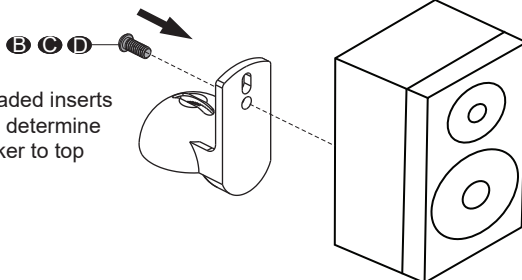


- Use the metal wall plate as a template to mark two holes on the wall as shown in the figure.
- Drill two 7/32" (5.5mm) dia. Holes 1.2" (30mm) deep. Insert a Concrete Anchor (Part-**F**) into each of these holes. Attach the wall plate to the wall using two screws (Part-**G**), make sure that the wall plate is level as shown in the figure.



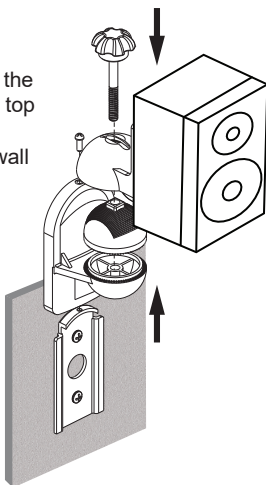
Step 3

- Hand thread bolts into the threaded inserts on the back of your Speaker to determine which bolt to use. Attach Speaker to top bracket using Bolts **B C D**.



Step 4

- Lastly, assemble the Speaker with the top bracket onto the bracket set and wall plate securely.



Step 4

- Angle adjustments.

