



Red Bat Wireless Game Controller User Manual (PG-9083S)

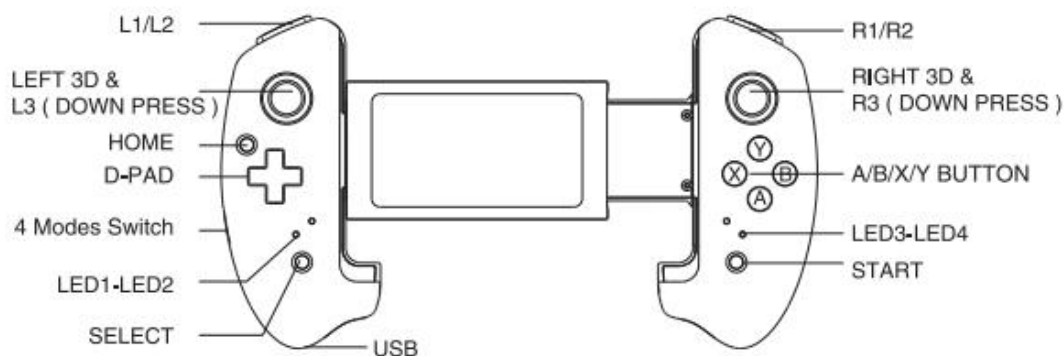
Application Instruction:

1. This product support Direct-Play Mode, Connect & Play, NO APP needed, NO activation, Easy to operate.(System requirements: Android 6.0 or above, iOS 11.0 or above)
2. Support playing games on BT enabled Android/ iOS Smartphones/ Tablets/ Smart TV ;
3. With extending holder, super telescopic, adjustable! Maximum extending size up to 280mm.
4. Ergonomic structure, comfortable hand feeling

* Due to the mobile phone system problems, individual mobile phones may not support this device (e.g. the mobile phones of the Media Tek platform can not support it).

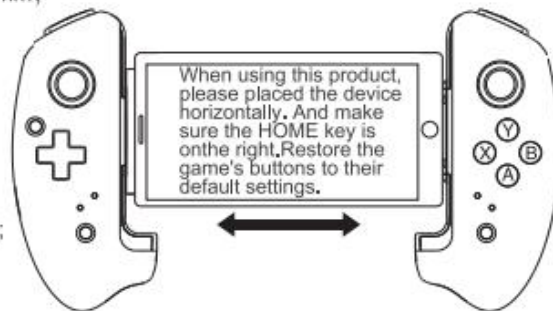
* Due to the official game platform software upgrade or source code changes and other not resist factors caused of some games can not be played or connected with our gamepad. Our company has no responsibility, we reserves the right of final interpretation for this.

Instruction for key function:



Electrical parameters:

- 1.Product Size: L215.5*W127.9*H54.5 mm;
- 2.Product Weight: 232±5g;
- 3.Working voltage: DC 3.7V;
- 4.Working current: <15mA;
- 5.Static current: < 15uA;
- 6.Continuous gameplay time: >15H;
- 7.Input voltage/current: DC 5V/ 500 mA;
- 8.Charging Time: about 3 hours;
- 9.BT 4.0 transmission distance: ≤8M;
- 10.Battery capacity: 380 mA;
- 11.Standby time: up to 30days once fully charged;

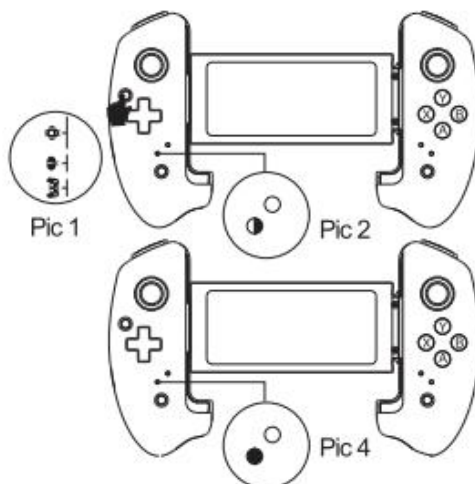


Product Application:

Direct Play Mode (Android V3) :

Set the mode switch to the " " (First or second) position;

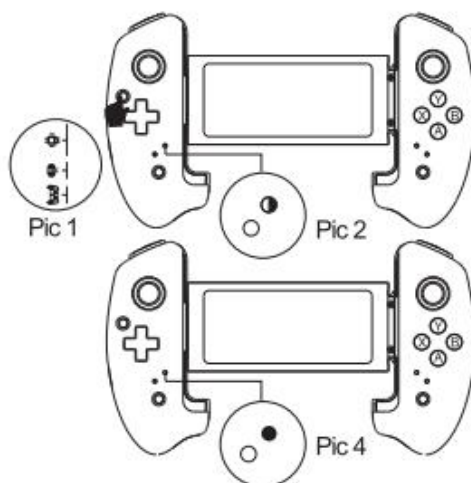
Press and hold the " HOME " button for 3 seconds to turn on the gamepad. At this time, the LED1 indicator flashes quickly, then search "PG—9083S" on mobile bluetooth and pair it, LED1 indicator will be always on after connected successfully! If you connected before, press the HOME button directly, LED1 indicator will flash slowly, automatically reconnect!



Direct Play Mode (IOS V3) :

Set the mode switch to the " " position;

Press and hold the " HOME " button for 3 seconds to turn on the gamepad. At this time, the LED2 indicator flashes quickly, then search "PG-9083S" on mobile bluetooth and pair it, LED2 indicator will be always on after connected successfully! If you connected before, press the HOME button directly, LED2 indicator will flash slowly, automatically reconnect!




Mapping game buttons for direct play mode (Android/IOS):

Check the default operation instructions at www.ipega.hk. If you need to reset the game buttons, please download and install " ShootingPlus V3 " APP from APP Store/ Google Play Store, remap the game buttons in the APP and adjust the button position! This product default game button is " PUBG Mobile " !

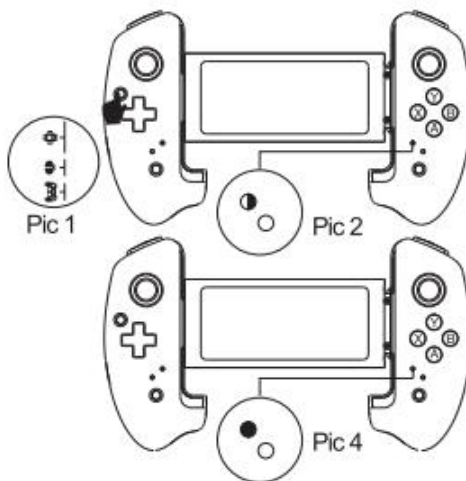


ShootingPlus V3

Android Standard Mode:

Set the mode switch to the "  " position;

Press and hold the " HOME " button for 3 seconds to turn on the gamepad. At this time, the LED3 indicator flashes quickly, then search "PG—9083S" on mobile bluetooth and pair it, LED3 indicator will be always on after connected successfully! If you connected before, press the HOME button directly, LED3 indicator will flash slowly, automatically reconnect!



Charging/sleep/wake up/off function of Gamepad:

1. Charging function:

- When the power is low, the LED4 indicator flashes quickly;
- When charging, the LED4 indicator flashes slowly;
- When fully charged, the LED4 indicator light is always on;

2. Sleep / wake up / off function:

- The gamepad will automatically turn off if no operation within 5 minutes.
- When you need to restart, you need to press the HOME button to wake up then you can reconnect;
- When the gamepad is turned on, press and hold the HOME button for 5 seconds, the product will be turned off, and all the LED indicators will turn off;

Notes:

1. Please do not store this product in wet or high-temperature areas.
2. Don't knap, beat, drub, pierce, or try to decompose this product, to avoid unnecessary damage to the product.
3. The product has built-in batteries, and please don't discard them together with the garbages.
4. Don't charge the controller in a place near the fire or other heat source.
5. Non professional personnel should not disassemble the product, otherwise it will not be covered in the after-sales warranty service.
6. Due to the official game platform software upgrades or source code changes and other not resist factors caused some of the game can not be played or connected with our Gamepad, iPega company has no responsibility. iPega reserve the right of final interpretation for this.

Accessories List:



Gamepad x1



User Manual x1



Micro USB charge cable x 1

iPega and ePega trademarks all belong to PEGA LIMITED.