



AONIC 50 Gen 2

Aonic 50 Gen 2 UC

Aonic 50 G2 UC quick start
Version: 0.1 (2024-G)

Table of Contents

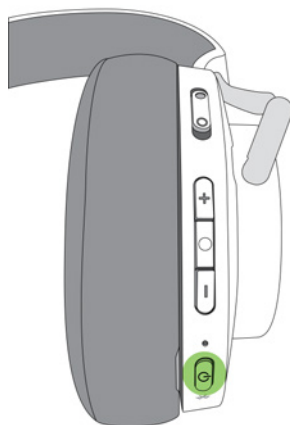
AONIC 50 Gen 2 Aonic 50 Gen 2 UC	3	Customizing the ANC switch	13
Getting Started	3	Create Custom Presets	16
General Description	3	Adjusting EQ	17
Features	3	Care and Maintenance	18
Wireless Headphones	4	Preset Modes	18
Headphone Button Controls	4	Update the Firmware for Shure AONIC Products	18
Headphone LED Behavior	7	Accessories	19
Bluetooth® Pairing	7	Furnished Accessories	19
Cable connections	8	Replacement Parts	19
Storage	8	Specifications	19
USB-C Adapter Button Controls	9	Important Safety Instructions	20
USB-C Adapter LED Behavior	9	Safety Information for Batteries	21
ShurePlus PLAY Mobile Listening App	10	Important Safety Instructions for Listening and IEM Products	22
General Description	10	Introduction to EMC	23
AONIC 50 and PLAY App Sound Processing	10	Regulatory Information for Class B EMC Products	24
Environment Mode	10	Regulatory Information for Wireless Products	25
Active Noise Cancellation	11	Regulatory Information for Wireless Products with Bluetooth	27
Spatializer	11	Environmental Regulatory Information	28
USB Audio Mode	11	Battery Regulatory Information	29
Auto Power Off	13	Regulatory Model Number (RMN)	29
		Certifications	30

AONIC 50 Gen 2

Aonic 50 Gen 2 UC

Getting Started

1. Power on your device.



2. Plug in USB-C bluetooth adapter to your PC.



Note: The USB-C Bluetooth adapter is pre-paired to your device.

General Description

Engineered from decades of stage and studio experience, the second generation of the AONIC 50 Wireless Noise Cancelling Headphones deliver premium, high-fidelity audio with improved active noise cancelling technology. New Spatialized Audio takes your listening experience outside of your headphones to a whole new level by replicating the experience of listening through high-end speakers. A modern “all-black” design and up to 45 hours of battery life keep the music going in comfort and style, while customizable EQ and environment mode provide a personalized, unparalleled audio experience.

Features

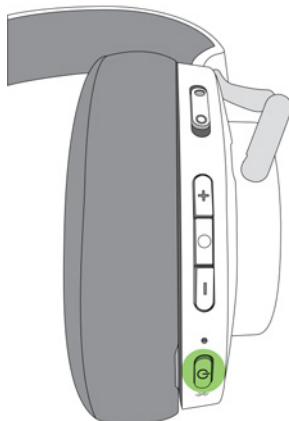
- Premium, studio-quality sound through custom-engineered 50mm dynamic drivers. Developed from decades of professional experience made for critical listeners.
- Spatialized Audio technology uses a proprietary algorithm to enhance the depth of your listening experience by widening the sound stage without introducing unnatural artifacts. Available in three unique modes - Music, Cinema, or Podcast. Mu-

sic mode replicates listening through high-end speakers in a room and maintains the original integrity of the track. Cinema mode enhances low-frequency response and clarity of speech for a movie theater experience. Podcast mode brings the voice of your favorite speakers close to your ears.

- New Hybrid Active Noise Cancelling (ANC) technology blocks out distractions for a truly immersive and natural listening experience improved over the prior generation. Using microphones inside and outside of the earcup, the second generation ANC allows you to control how much (or how little) of the outside world you hear. Featuring four selectable modes (Light, Moderate, Max and MaxAware), the new MaxAware setting allows you to block unwanted noise while still maintaining awareness of your surroundings - great for conversations on-the-go.
- Environment mode allows you to hear the outside world with the flip of a switch. Refine the ambience settings via an adjustable slider in the ShurePlus™ PLAY app.
- Up to 45 hours battery life with quick charge capabilities, more than doubling runtime from the prior generation. Fifteen minutes of charge provides 5 hours of use.
- Customizable EQ. Choose from multiple presets, or create your own using the free ShurePlus™ PLAY app. Saves directly to your headphones for a seamless audio experience across other apps and devices.
- Long-wearing comfort and durability in a patented design built to last. Folds flat in a new zippered carrying case designed for portability.
- Customizable fingertip controls provide quick access to answer calls, adjust volume, pause music or access default voice assistant with the push of a button. Assign your preferred features including Spatializer, EQ or ANC settings directly on the headphone for advanced control.
- Premium communication with clear call quality through beamforming microphone technology and proprietary automatic gain control (AGC) settings. Utilizing 6 microphones, the precision-engineered system automatically adjusts settings to avoid surrounding noise, offering unmatched quality for video and phone calls. Hear and be heard clearly.
- Bluetooth® 5 wireless technology with a class 1 transmitter delivers enhanced stability with a range of up to 100 meters (320 feet). Pairs to phones, tablets and laptops.
- Premium headphone amplifier and support for multiple codecs including Qualcomm® aptX™, aptX™ HD, aptX™ Adaptive, AAC, SBC and Sony LDAC. Featuring Snapdragon Sound™ technology.
- High-Resolution USB Streaming up to 32-bit/384 kHz for an unmatched wired listening experience. Connect to wired sources with included 3.5mm analog audio cable or USB-C digital input for charging and High-Resolution streaming audio.
- ShurePlus™ PLAY app allows you to customize your preferences and control parametric EQ, noise cancellation, Spatializer and Environment Mode settings. Free to download for iOS and Android.

Wireless Headphones

Headphone Button Controls



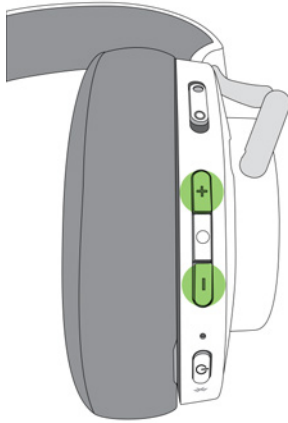
Power Button

Action	Control
Power on	Press and hold, 2 seconds
Power off	Press and hold, 4 seconds
Enter pairing mode	<ol style="list-style-type: none"> 1. Turn off the headphones 2. Press and hold, 5 seconds
Reset paired devices list	<ol style="list-style-type: none"> 1. Turn off the headphones and plug in to a charger 2. Press and hold, 7 seconds
Answer calls	Press once
Decline/end calls	Press 3 times
Mute/unmute mic	Press twice

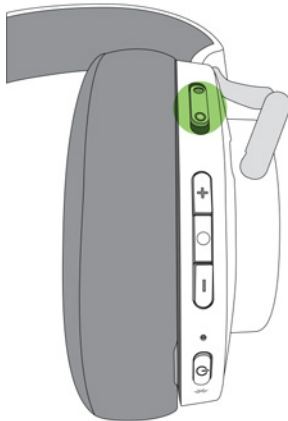


Teams Button

Action	Control
Bring Teams to the front	Press once
Raise/lower hand	Press and hold, 3 seconds

**Side Buttons**

Action	Control
Volume up	Press +
Volume down	Press -

**Environment mode/ANC switch**

Action	Control
Environment mode	Push switch up
No Environment mode or Active Noise Cancellation	Centered
Active Noise Cancellation	Push switch down

Note: You can customize the button controls in the ShurePlus™ PLAY app available for iOS and Android.

Hardware reset

If the buttons do not respond to repeated presses, you can perform a hardware reset to force a power off.

1. Press the +, -, and power buttons simultaneously to immediately power off the headphones. This does not reset any values you may have changed.
2. Power on the headphones.

Headphone LED Behavior

The headphone's light is above the power button on the right earcup.



Flashing blue and red: Pairing

Blue for 2 seconds: Bluetooth connected

Flashing blue: Incoming call

Flashing red: Low battery

Red double flash: Mic muted

Solid red: Charging* or in a call/meeting

*LED turns off when the headphones are fully charged.

Bluetooth® Pairing

Headphones automatically enter pairing mode when you power them on the first time or when they have not been previously paired with this audio source.

1. From your audio source, select "Shure AONIC 50"
2. When successfully paired, you hear "Connected"

Headphones automatically pair with previously paired devices when you power them on. After a few seconds you will hear "Connected."

Manual pairing

1. Turn off the headphones
2. Press and hold the power button for 5 seconds
3. When you hear "Bluetooth pairing mode," release the button
4. From your audio source, select "Shure AONIC 50"

5. When successfully paired, you hear "Connected"

Note: If the pairing fails on the first attempt, repeat the process from the beginning.

To customize the listening features of your device, download the free ShurePlus™ PLAY app for iOS and Android.

Multipoint pairing

AONIC 50 headphones support Bluetooth multipoint pairing which enables the headphones to be connected to two devices at the same time. AONIC 50 will remain connected to both devices and receive inputs alternately.

If you are having difficulty with your AONIC 50 headphones and multipoint pairing, follow these steps:

1. Clear the AONIC 50's paired devices list (PDL) from the PLAY app
2. Clear the AONIC 50 from any previously paired devices
3. Power off the AONIC 50 headphones
4. Press and hold the AONIC 50 power button for 5 seconds
5. When you hear "Bluetooth pairing mode," release the button
6. Select "Shure AONIC 50" on the first mobile device
7. When successfully paired, you hear "Connected"
8. Disable Bluetooth on that mobile device
9. Power off the AONIC 50 headphones
10. Press and hold the AONIC 50 power button for 5 seconds to enter Bluetooth pairing mode again
11. Connect to other device
12. Turn on Bluetooth on the first cellular phone and select "Shure AONIC 50" in settings

You will not hear a "Connected" prompt but you will see that the headphones are connected to both of the devices.

Use the ShurePlus PLAY app to select how you want the audio to work in multipoint pairing:

- **Static** - Your current audio connection is unaffected if a second audio source begins to play.
- **Dynamic** - Your audio connection switches to the most recently played audio source.

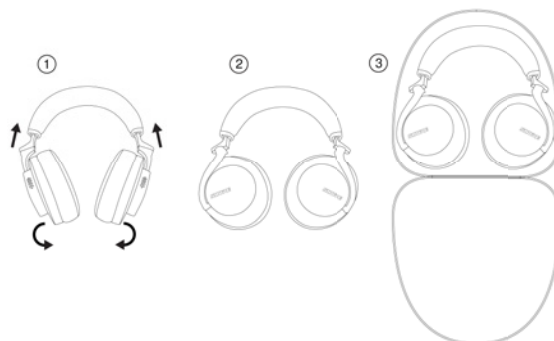
Cable connections

The headphones can also use two different cables to access audio instead of using the wireless feature:

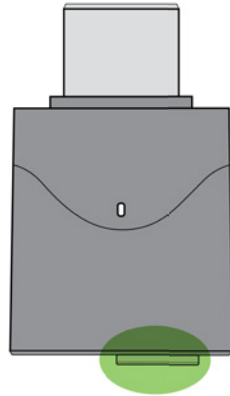
- **USB-C:**
 - Charge the headphones
 - Connect to digital audio
- **3.5 mm audio cable:** Connect to an analog audio port

Storage

Store headphones in protective case when not in use.



USB-C Adapter Button Controls

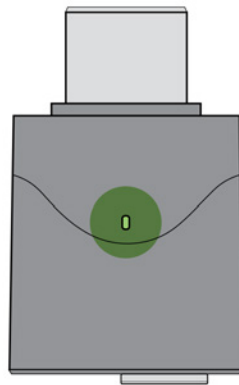


USB-C Adapter Button Controls

Action	Control
Enter Bluetooth pairing	Press and hold, 4 seconds
Stop Bluetooth pairing	Press once
Reset paired device list	Press and hold, 7 seconds

USB-C Adapter LED Behavior

The light is on the top of the USB-C adapter.



Flashing red and blue: Bluetooth pairing

Solid blue: Bluetooth connected

Flashes white: Teams pairing

Solid white: Teams connected

Slow blinking white: Teams meeting notifications

Flashes blue: Incoming call

Solid red: In a call or meeting

Flashes red: Call muted

ShurePlus PLAY Mobile Listening App

General Description

The ShurePlus PLAY Mobile Listening App is a high-resolution music player with advanced EQ controls. Play uncompressed audio files with your iOS or Android mobile device using the music tab. Use built-in Shure EQ presets to customize the sound, or create your own EQ presets in the settings tab. Unlock environment mode and ANC features by connecting to Shure wireless and True Wireless products in the device tab.

Features

- Import and play multiple, high-resolution and standard file types
- Customize presets with the parametric graphic EQ
- Adjust your volume with the full-screen fader
- Create playlists and organize your music library by playlist, artist, album title, song title, genre, or composer
- Quickly dial in your sound with EQ preset modes for a variety of listening situations.

AONIC 50 and PLAY App Sound Processing

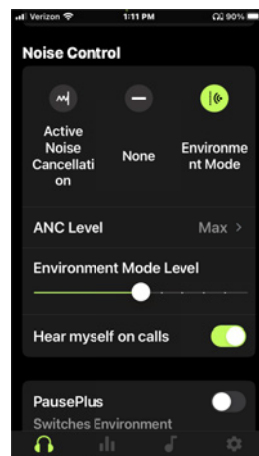
AONIC 50, Gen 2 headphones use all of your PLAY app DSP settings, regardless of how you are connected to the audio source and even after you have closed the app. The DSP occurs on the headphones and the app provides the access to customize those hardware settings.

Environment Mode

Environment mode allows you to hear the ambient noise around you. This is especially useful when you want to listen to music or are on a phone call, yet you still want to be aware of the sounds around you.

To use environment mode, push the vertical switch on the back of the right earcup to the up position.

In the ShurePlus PLAY app, you can adjust the environment mode across eleven levels:



Hear Myself on Calls

The **Hear myself on calls** setting allows you to hear your own voice on phone calls at a volume based on your Environment Mode setting. When switched off, the mics in the headphones still pick up your voice for phone calls, it's just that you are not able to hear yourself.

Active Noise Cancellation

Active Noise Cancellation (ANC) allows you to suppress some or all of the noise around you. This is especially useful when traveling where road noise in a car, bus, or train, or jet noise in an airplane can force you to increase the volume.

To use ANC, push the vertical switch on the back of the right earcup to the down position.

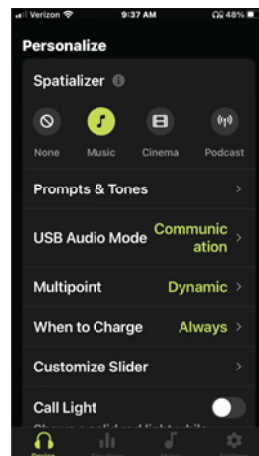
In the ShurePlus PLAY app, you can adjust the ANC between four levels of noise cancellation:

- Light
- Moderate
- Max
- MaxAware

Spatializer

The Spatializer uses digital processing to make it sound like you're in a larger setting using a pair of loudspeakers. The Spatializer options are:

- None - no change
- Music - the audio sounds like you're in a recording studio
- Cinema - the audio sounds like you're in a theater
- Podcast - the audio sounds like you're in the room with the podcasters



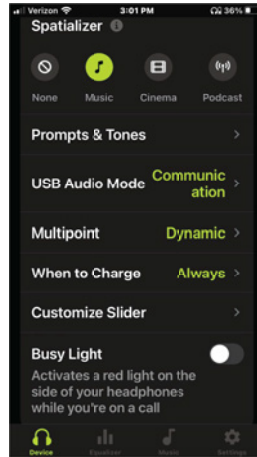
USB Audio Mode

AONIC 50, Gen 2 headphones have two different USB modes, selectable in the PLAY app:

- Communication - Standard, default mode, mic available
 - Communication Mode supports playback up to 24-bit, 384kHz
- Hi-Res Listening - Hi-Res audio, mic not available
 - Hi-Res Listening supports playback in 16-, 24-, and 32-bit depths, and the sample rates: 48, 96, 192, and 384. The 44.1 sample rate (and multiples of that sample rate) are not supported.

Hi-Res Listening

AONIC 50, Gen 2 headphones supports the Hi-Res streaming playback of the supported audio file formats (WAV, FLAC, and others) over USB for the ultimate audiophile listening experience. You access the feature through the PLAY app, USB Audio Mode.



You select Hi-Res Listening, switching it from the factory default mode of Communication.

Note: The following features are not supported when in USB Hi-Res Listening mode:

- Environment Mode/Active Noise Cancellation
- Spatializer
- Switch customization
- Any EQ feature in the PLAY app

Notice: iOS USB playback requires a Camera Connection kit.

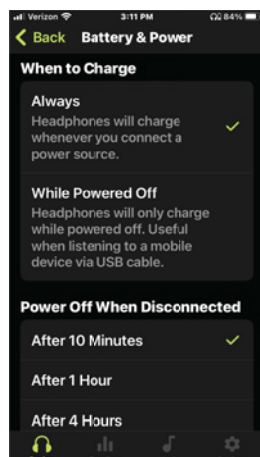
Mic Selection with a Computer

When using AONIC 50, Gen 2 headphones with a computer connected through a USB cable, use Device Manager > Audio inputs and outputs to specify

- Headset - to use the mics in the AONIC 50
- Headphones - to use a third-party mic

USB Charging

The USB cable always recharges the battery in the headphones, regardless of USB mode. If you are using a mobile device with a USB cord and are worried about draining your battery, you can control charging in the PLAY app under When to Charge.



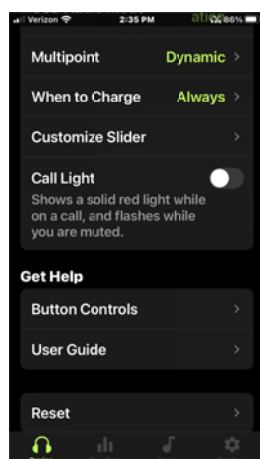
Auto Power Off

You can configure the Auto Power Off feature in the PLAY app to turn off your headphones when not in use:

1. Select When to Charge
2. Specify the auto power off time in Power Off When Disconnected
 - After 10 Minutes (default)
 - After 1 Hour
 - After 4 Hours
 - Never

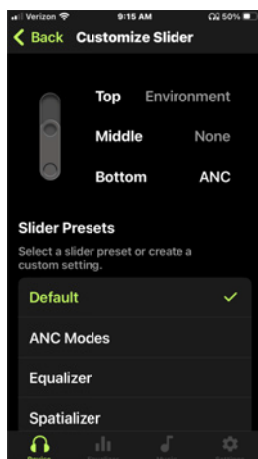
Customizing the ANC switch

Using the PLAY app, you can customize the ANC switch to provide an enhanced listening experience. Select Customize Slider:



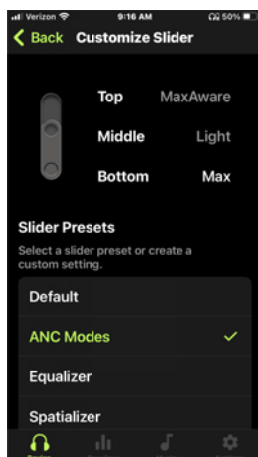
The Default settings are:

- Top - Environment mode
- Middle - None (bypass / passive isolation)
- Bottom - Active Noise Cancellation



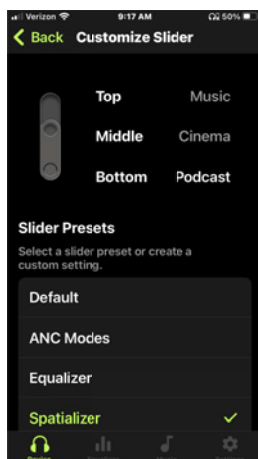
The ANC Modes are:

- Top - MaxAware (Active Noise Cancellation and Environment mode)
- Middle - Light Active Noise Cancellation
- Bottom - Maximum Active Noise Cancellation



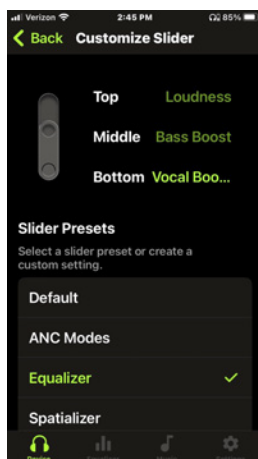
The Spatializer settings are:

- Top - Music
- Middle - Cinema
- Bottom - Podcast



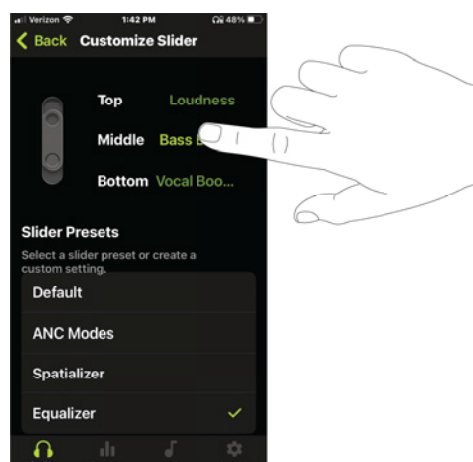
There are default Equalizer settings when you first select the Equalizer option:

- Top - Loudness
- Middle - Bass Boost
- Bottom - Vocal Boost



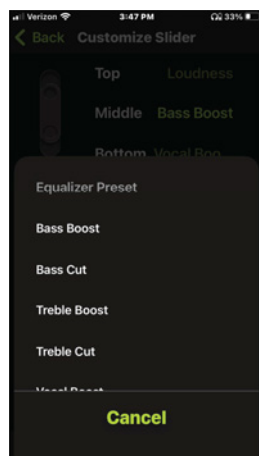
You can change the default settings to any of the equalizer options

1. Select the slider position you want to change



2. Choose from the equalizer preset settings:

- Bass Boost
- Bass Cut
- Treble Boost
- Treble Cut
- Vocal Boost
- De-ess
- Loudness
- any custom presets you've created



Create Custom Presets

Add new preset

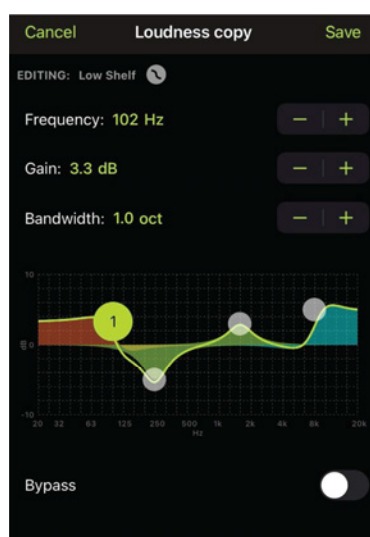
1. Scroll down to tap Add New Preset or tap Manual. New presets start out flat.
2. Adjust your frequency, gain, and bandwidth parameters. There are three ways to adjust your equalizer.
 - Tap the values to type in a specific number.
 - Tap the - or + to adjust in larger increments.
 - Tap and drag the numbered circles for bigger changes.
3. Tap Save to name and save your new custom preset. Custom presets will show up after the list of Shure presets.

Duplicate a Preset

You can duplicate both Shure and custom presets. Duplicating a preset is convenient if you like the way a preset sounds but you want to make and keep adjustments to the sound.

1. Start by selecting an already existing preset.
2. Tap the More Options 3 dots and select Duplicate.
3. Scroll down to find your duplicate preset in the list of custom presets.
4. Tap the More Options 3 dots and select Edit.
5. Adjust your frequency, gain, and bandwidth parameters. Type in a specific number. Tap - or + to adjust in small increments. Or manually tap and drag the numbered circles for larger changes.
6. Tap Save to save your new custom preset.

Adjusting EQ



Select and adjust frequency, gain, and bandwidth in the equalizer.

Equalization Explained

The 4-band parametric equalizer is used to adjust the volume of independent, adjustable frequency ranges, to precisely shape the frequency response. The equalizer can be bypassed for a flat frequency response.

Frequency	Select the center frequency of the filter to cut/boost.
Gain	Adjusts the level for a specific filter.
Bandwidth or Q	Adjusts the range of frequencies affected by the filter. The value is represented in octaves.

Commonly used EQ Adjustments

Treble boost for improved speech intelligibility: Add a high shelf filter to boost frequencies greater than 1 kHz by 3-6 dB

Ambient HVAC noise reduction: Add a low cut filter to attenuate frequencies below 200 Hz

Reduce flutter echoes and sibilance: Identify the specific frequency range that "excites" the sound:

1. Set a narrow Q value

2. Increase the gain to between +10 and +15 dB, and then experiment with frequencies between 1 kHz and 6 kHz to pinpoint the range of flutter echoes or sibilance
3. Reduce the gain at the identified frequency (start between -3 and -6 dB) to minimize the unwanted sound

Reduce hollow, resonant sound: Identify the specific frequency range that "excites" the sound and lower it:

1. Set a narrow Q value
2. Increase the gain to between +10 and +15 dB, and then experiment with frequencies between 300 Hz and 900 Hz to pinpoint the resonant frequency
3. Reduce the gain at the identified frequency (start between -3 and -6 dB) to minimize the unwanted sound

Care and Maintenance

To clean the headphones, use a soft, damp cloth.

CAUTION: Do not use cleansers that contain solvents. Keep liquid and foreign objects out of the driver openings.

Preset Modes

Use presets to quickly access commonly used listening scenarios. Seven selectable 4-band presets optimize settings for gain, equalization, and compression. Play a song and find the preset that you think suits the song best, and then adjust levels as needed.

Preset	Application
Bass Boost	Increase low frequencies
Bass Cut	Decrease low frequencies
Treble Boost	Increase high frequencies
Treble Cut	Decrease high frequencies
Vocal Boost	Increase vocal clarity by emphasizing the vocal range
De-ess	Decrease vocal hiss/ sibilance in speech
Loudness	Clarity for listening at low volume. Both the bass and treble frequencies are boosted to make the overall sound feel louder.

Update the Firmware for Shure AONIC Products

To take advantage of additional features and design enhancements, connect your AONIC product to a mobile device running the ShurePlus PLAY app, available for [Android](#) and [iOS](#).

1. Turn on Bluetooth and pair the AONIC product to your mobile device.
2. Open the ShurePlus PLAY app.
3. Updates appear on the home screen or the settings screen. Tap to update.
 - To update, you need a **minimum battery charge of 50%** on the AONIC product and your mobile device.
 - Firmware downloads can take **up to 30 minutes**.
4. Wait until the "Update Completed" confirmation screen appears.
 - Do not power off the AONIC product until the update completes.
 - Do not put earphone adapters back into their case. It will cancel the update.

Tips for a reliable update:

- Make sure that the mobile device and your AONIC product are **powered on** and **near** one another.
- Enable **Do Not Disturb** to avoid interruptions while downloading the update.
- Stay inside of the PLAY app and ensure that your screen is on.
- Do not use the AONIC product or mobile device while the firmware is downloading. This slows or cancels the firmware update.
- Do not update in areas with high volume mobile or WiFi wireless activity, like a plane or train station. This interference can slow or cancel the update.
- If the update fails, quit the app completely. You may need to force quit the app so that it isn't running in the background. Wait 5 minutes before opening the app and attempting again.
- If you are updating earphones and both adapters do not automatically connect, tap the music tab and then tap back into the device tab.

Contact Shure Service and Repair if you experience any issues.

Accessories

Furnished Accessories

REPL SBH2350 CASE ONLY	RPH-SBH2350-CASE
REPL USB-C to USB-A CABLE 1M	RPH-CABLE-USB
REPL 2.5-3.5MM CABLE 1.5M	RPH-CABLE-AUDIO

Replacement Parts

SBH2350 REPLACEMENT EARPADS (BLACK)	SBH2350-BK-PADS
SBH2350 REPLACEMENT EARPADS (DARK BROWN)	SBH2350-BR-PADS
SBH2350 REPLACEMENT EARPADS (WHITE)	SBH2350-WH-PADS

Specifications

Model/Model:

MH36458

Transducer Type

Dynamic, Neodymium magnet

Driver Size

50 mm

Frequency Response

20 to 22,000 Hz

Sensitivity

@ 1 kHz

97.5 dB/mW

Impedance

@ 1 kHz

39 Ω

Maximum Input Power

100 mW

Battery Life

up to 45 hours

Weight

334 g (11.8oz.)

Operating Temperature

0°C to 45°C (32°F to 113°F)

Storage Temperature

-10°C to 30°C (14°F to 86°F)

Antenna Type

Internal Monopole

Gain

+2.60 dBi

Operating Frequency

2402 MHz-2480 MHz

Modulation Type

FHSS

RF Output Power

+13.92 dBm (EIRP)

Supported Codecs

aptX, aptX HD, aptX Adaptive, aptX Voice, SBC, AAC, LDAC

Important Safety Instructions

1. READ these instructions.
2. KEEP these instructions.
3. HEED all warnings.
4. FOLLOW all instructions.
5. DO NOT use this apparatus near water.
6. CLEAN ONLY with dry cloth.
7. DO NOT block any ventilation openings. Allow sufficient distances for adequate ventilation and install in accordance with the manufacturer's instructions.

8. DO NOT install near any heat sources such as open flames, radiators, heat registers, stoves, or other apparatus (including amplifiers) that produce heat. Do not place any open flame sources on the product.
9. DO NOT defeat the safety purpose of the polarized or grounding type plug. A polarized plug has two blades with one wider than the other. A grounding type plug has two blades and a third grounding prong. The wider blade or the third prong are provided for your safety. If the provided plug does not fit into your outlet, consult an electrician for replacement of the obsolete outlet.
10. PROTECT the power cord from being walked on or pinched, particularly at plugs, convenience receptacles, and the point where they exit from the apparatus.
11. ONLY USE attachments/accessories specified by the manufacturer.
12. USE only with a cart, stand, tripod, bracket, or table specified by the manufacturer, or sold with the apparatus. When a cart is used, use caution when moving the cart/apparatus combination to avoid injury from tip-over.



13. UNPLUG this apparatus during lightning storms or when unused for long periods of time.
14. REFER all servicing to qualified service personnel. Servicing is required when the apparatus has been damaged in any way, such as power supply cord or plug is damaged, liquid has been spilled or objects have fallen into the apparatus, the apparatus has been exposed to rain or moisture, does not operate normally, or has been dropped.
15. DO NOT expose the apparatus to dripping and splashing. DO NOT put objects filled with liquids, such as vases, on the apparatus.
16. The MAINS plug or an appliance coupler shall remain readily operable.
17. The airborne noise of the Apparatus does not exceed 70dB (A).
18. Apparatus with CLASS I construction shall be connected to a MAINS socket outlet with a protective earthing connection.
19. To reduce the risk of fire or electric shock, do not expose this apparatus to rain or moisture.
20. Do not attempt to modify this product. Doing so could result in personal injury and/or product failure.
21. Operate this product within its specified operating temperature range.
22. Follow local regulations and consult qualified personnel if the product installation or relocation requires construction work. Choose mounting hardware and an installation location that can support the weight of the product. Avoid locations subject to constant vibration. Use the required tools to install the product properly. Inspect the product periodically.

WARNING:

- Voltages in this equipment are hazardous to life. No user-serviceable parts inside. Refer all servicing to qualified service personnel. The safety certifications do not apply when the operating voltage is changed from the factory setting.
- If water or other foreign objects enter the inside of the device, fire or electric shock may result.

Safety Information for Batteries

1. Battery packs may explode or release toxic materials. Risk of fire or burns. Do not open, crush, modify, disassemble, heat above 140°F (60°C), or incinerate.
2. Follow instructions from manufacturer
3. Only use Shure charger to recharge Shure rechargeable batteries

WARNING:



Danger of explosion if battery incorrectly replaced. Replace only with same or equivalent type.

Do not dispose of the battery along with household waste. Check with local vendor for proper disposal of used battery packs.

4. Never put batteries in mouth. If swallowed, contact your physician or local poison control center
5. In the event of a cell leaking, do not allow the liquid to come in contact with the skin or eyes. If contact has been made, wash the affected area with copious amounts of water and seek medical advice.
6. Do not short circuit; may cause burns or catch fire
7. Do not charge or use battery packs other than Shure rechargeable batteries
8. Batteries (battery pack or batteries installed) shall not be exposed to excessive heat such as sunshine, fire or the like
9. Do not immerse the battery in liquid such as water, beverages, or other fluids.
10. Do not attach or insert battery with polarity reversed.
11. Keep away from small children.
12. Do not use abnormal batteries.
13. Pack the battery securely for transport.

Note: Use only with the included power supply, batteries, or a Shure-approved equivalent.

Storing Batteries

If batteries are to be stored for more than eight days, they should be placed into a temperature controlled storage area. Recommended battery storage temperature is 10 to 25°C (50 to 77°F).

Additional battery storage information is available at shure.com/battery-storage.



Important Safety Instructions for Listening and IEM Products

1. If water or other foreign objects enter the inside of the device, fire or electric shock may result.
2. Do not attempt to modify this product. Doing so could result in personal injury and/or product failure.
3. Do not use when a failure to hear your surroundings could be dangerous, such as while driving, or when biking, walking, or jogging where traffic is present and accidents could occur.
4. Keep this product and its accessories out of reach of children. Handling or use by children may pose a risk of death or serious injury. Contains small parts and cords that may pose risk of choking or strangulation.
5. Prior to inserting the earphone, always recheck the sleeve to make sure it is firmly attached to the nozzle to decrease the risk of sleeves detaching from the nozzle and becoming lodged in your ear. If a sleeve becomes lodged in your ear, seek professional medical assistance to remove the sleeve.
6. Stop using the earphones/headphones and consult a medical professional if you experience irritation, excessive wax buildup, or other discomfort.

CAUTION

- Never disassemble or modify the device, as failures may result.
- Do not subject to extreme force and do not pull on the cable or failures may result.
- Keep the earphone dry and avoid exposure to extreme temperatures and humidity.
- If you are currently receiving ear treatment, consult your physician before using this device.

WARNING:

Use, clean, and maintain earphones according to manufacturer's instructions



High sound pressure

Hearing damage risk

To prevent possible hearing damage, do not listen at high volume levels for long periods.

WARNING FOR IN-EAR-MONITORS (IEM product_ONLY)

This device is able to produce sound volume higher than 85 dB SPL. Please check your maximum allowed continuous noise exposure level based on your national employment protection requirements.

WARNING:

LISTENING TO AUDIO AT EXCESSIVE VOLUMES CAN CAUSE PERMANENT HEARING DAMAGE. USE AS LOW A VOLUME AS POSSIBLE. Over exposure to excessive sound levels can damage your ears resulting in permanent noise-induced hearing loss (NIHL). Please use the following guidelines established by the Occupational Safety Health Administration (OSHA) on maximum time exposure to sound pressure levels before hearing damage occurs.

90 dB SPL at 8 hours	95 dB SPL at 4 hours	100 dB SPL at 2 hours	105 dB SPL at 1 hour
110 dB SPL at ½ hour	115 dB SPL at 15 minutes	120 dB SPL Avoid or damage may occur	

Introduction to EMC

Electromagnetic Interference (EMI) is any signal or emission, radiated in free space or conducted along power or signal leads, that endangers the functioning of radio navigation or other safety service or seriously degrades, obstructs, or repeatedly interrupts a licensed radio communications service. Radio communications services include but are not limited to AM/FM commercial broadcast, television, cellular services, radar, air-traffic control, pager, and Personal Communication Services (PCS). These licensed radio services, and unlicensed radio services, such as WLAN, ZIGBEE or Bluetooth, along with unintentional radiators such as digital devices contribute to the electromagnetic environment.

Electromagnetic Compatibility (EMC) is the ability of items of electronic equipment to function properly together in the electronic environment. While this equipment has been designed and determined to be compliant with regulatory agency limits for EMI, there is no guarantee that interference will not occur in a particular installation.

Shure products are designed, tested, and classified for their intended electromagnetic environment. These electromagnetic environment classifications generally refer to the following harmonized definitions:

- Class B products are intended for use in residential/domestic environments but may also be used in non-residential/non-domestic environments.

Note: The residential/domestic environment is an environment where the use of broadcast radio and television receivers may be expected within a distance of 10 m from where this product is used.

- Class A products are intended for use in non-residential/non-domestic environments. Class A products may also be utilized in residential/domestic environments but may cause interference and require the user to take adequate corrective measures.

EMC conformance testing is based on the use of supplied and recommended cable types. The use of other cable types may degrade EMC performance.

Regulatory Information for Class B EMC Products

CE Notice

Hereby, Shure Incorporated declares that this product with CE Marking has been determined to be in compliance with European Union requirements.

The full text of the EU declaration of conformity is available at the following site: <https://www.shure.com/en-EU/support/declarations-of-conformity>.

UKCA Notice

Hereby, Shure Incorporated declares that this product with UKCA Marking has been determined to be in compliance with UK-CA requirements.

The full text of the UK declaration of conformity is available at the following site: <https://www.shure.com/en-GB/support/declarations-of-conformity>.

UK Cybersecurity

UK SI 2023 NO. 1007 STATEMENT OF COMPLIANCE

Product Type: Relevant connectable products as defined by The Product Security and Telecommunications Infrastructure (Security Requirements for Relevant Connectable Products) Regulations 2023.

Manufacturer Statement: We, Shure Incorporated, certify and declare as manufacturer under our sole responsibility, that the above mentioned product(s) conform(s) to Schedule 2 of the essential requirements of the listed applicable United Kingdom Statutory Instruments (including their amendments) and the associated norms.

Information on how to report security issues: The latest version of Shure's Disclosure policy can be found at the following link: <https://www.shure.com/en-GB/about-us/security>

Security update periods: Shure provides support regarding hardware and software updates that continue the integral cyber security safety of Shure products up to 24 months after end of life (AEOL). For the full statement regarding Shure's product support policy, and information regarding products end of life status information can be found at the following link: <https://www.shure.com/en-GB/about-us/security>

Manufacturer:

Shure Incorporated 5800 Touhy Avenue
Niles, Illinois, 60714-4608 U.S.A.
Website: www.Shure.com.

Technical documentation is kept at:

Shure Incorporated, Corporate Global Compliance Engineering Division

UK Importer/Representative:

Shure UK Limited
Unit 2, The 10 Centre, Lea Road, Waltham Abbey, Essex, EN9 1AS, U.K.

Phone: +44 (0)1992 - 703058
Email: EMEAsupport@shure.de

On behalf of Manufacturer:

Chad Ayers

01 February 2024 Niles, Illinois

Senior Director, Global Compliance

FCC Notice

This equipment has been tested and found to comply with the limits for a Class B digital device pursuant to Part 15 of the FCC Rules. These limits are designed to provide reasonable protection against harmful interference when the equipment is operated in a residential installation. This equipment generates, uses, and can radiate radio frequency energy and, if not installed and used in accordance with the instructions, may cause harmful interference with radio communications. However, there is no guarantee that interference will not occur in a particular installation. If this equipment does cause harmful interference with radio or television reception, which can be determined by turning the equipment off and on, you are encouraged to try to correct the interference by one or more of the following measures:

- Reorient or relocate the antenna of the radio/television receiver.
- Increase the separation between this equipment and the radio/television receiver.
- Plug the equipment into a different outlet so that the equipment and the radio/television receiver are on different power mains branch circuits.
- Consult a representative of Shure or an experienced radio/television technician for additional suggestions.

This device complies with Part 15 of the FCC Rules. Operation is subject to the following two conditions:

1. This device may not cause harmful interference.
2. This device must accept any interference received, including interference that may cause undesired operation.

Notice: The FCC regulations provide that changes or modifications not expressly approved by Shure Incorporated could void your authority to operate this equipment.

For information regarding responsible party and other matters relating to FCC compliance, please contact Shure Incorporated, 5800 W. Touhy Avenue, Niles, Illinois 60714-4608 U.S.A. [shure.com/contact](https://www.shure.com/contact)

Canada, ISED Notice

Notice: The Industry Canada regulations provide that changes or modifications not expressly approved by Shure Inc. could void your authority to operate this equipment.

This Class B digital apparatus complies with Canadian ICES-003. Cet appareil numérique de la classe B est conforme à la norme NMB-003 du Canada.

Regulatory Information for Wireless Products

This equipment complies with FCC radiation exposure limits set forth for an uncontrolled environment. End user must follow the specific operating instructions for satisfying RF exposure compliance. This transmitter must not be co-located or operating in conjunction with any other antenna or transmitter.

This equipment complies with FCC radiation exposure limits set forth for an uncontrolled environment. End user must follow the specific operating instructions for satisfying RF exposure compliance. This transmitter must not be co-located or operating in conjunction with any other antenna or transmitter.

The portable device is designed to meet the requirements for exposure to radio waves established by the Federal Communications Commission (USA). These requirements set a SAR limit of 1.6 W/kg averaged over one gram of tissue. The highest SAR value reported under this standard during product certification for use when properly worn on the body/head. This equipment should be installed and operated with minimum distance 0 cm between the radiator and your body/head. SAR measurements are based on a 5mm spacing from the body and that compliance is achieved at that distance.

Industry Canada (IC) Notices

This device contains licence-exempt transmitter(s)/receiver(s) that comply with Innovation, Science and Economic Development Canada's licence-exempt RSS(s). Operation is subject to the following two conditions:

1. This device may not cause interference.
2. This device must accept any interference, including interference that may cause undesired operation of the device.

L'émetteur/récepteur exempt de licence contenu dans le présent appareil est conforme aux CNR d'Innovation, Sciences et Développement économique Canada applicables aux appareils radio exempts de licence. L'exploitation est autorisée aux deux conditions suivantes :

1. L'appareil ne doit pas produire de brouillage;
2. L'appareil doit accepter tout brouillage radioélectrique subi, même si le brouillage est susceptible d'en compromettre le fonctionnement.

This equipment complies with ISSED radiation exposure limits set forth for an uncontrolled environment. End user must follow the specific operating instructions for satisfying RF exposure compliance. This transmitter must not be co-located or operating in conjunction with any other antenna or transmitter.

Cet équipement est conforme aux limites d'exposition aux rayonnements ISSED établies pour un environnement non contrôlé. L'utilisateur final doit suivre les instructions spécifiques pour satisfaire les normes. Cet émetteur ne doit pas être co-implanté ou fonctionner en conjonction avec toute autre antenne ou transmetteur.

This equipment complies with ISSED radiation exposure limits set forth for an uncontrolled environment. This equipment could be installed and operated with minimum distance 0 cm between the radiator and your body. End user must follow the specific operating instructions for satisfying RF exposure compliance. This transmitter must not be co-located or operating in conjunction with any other antenna or transmitter.

The portable device is designed to meet the requirements for exposure to radio waves established by the ISSED. These requirements set a SAR limit of 1.6 W/kg averaged over one gram of tissue. The highest SAR value reported under this standard during product certification for use when properly worn on the body/head.

Cet équipement est conforme aux limites d'exposition aux rayonnements ISSED établies pour un environnement non contrôlé. Cet équipement peut-être installé et utilisé avec une distance minimale de 0 cm entre le radiateur et votre corps. L'utilisateur final doit suivre les instructions spécifiques pour satisfaire les normes. Cet émetteur ne doit pas être co-implanté ou fonctionner en conjonction avec toute autre antenne ou transmetteur.

Le dispositif portatif est conçu pour répondre aux exigences d'exposition aux ondes radio établie par le développement énergétique DURABLE. Ces exigences un SAR limite de 1,6 W/kg en moyenne pour un gramme de tissu. La valeur SAR la plus élevée signalée en vertu de cette norme lors de la certification de produit à utiliser lorsqu'il est correctement porté sur les corps/tête.

Additional Canadian information on RF exposure also can be found at the following Web address: <http://www.ic.gc.ca/eic/site/smt-gst.nsf/eng/sf08792.html>

ANATEL Notice

Este equipamento não tem direito à proteção contra interferência prejudicial e não pode causar interferência em sistemas devidamente autorizados. Para maiores informações, consulte o site da ANATEL – <http://www.anatel.gov.br>.

IFETEL Notice

La operación de este equipo está sujeta a las siguientes dos condiciones: (1) es posible que este equipo o dispositivo no cause interferencia perjudicial y (2) este equipo o dispositivo debe aceptar cualquier interferencia, incluyendo la que pueda causar su operación no deseada.

KCC Notice

해당 무선설비는 전파혼신 가능성이 있으므로 인명안전과 관련된 서비스는 할 수 없음

NBTC Notice

เครื่องโทรคมนาคมและอุปกรณ์นี้มีความสอดคล้องตามมาตรฐานหรือข้อกำหนดทางเทคนิคของ กสทช.

NCC Notice

Connection and use of this communications equipment is permitted by the Nigerian Communications Commission.

NCC Notice

低功率射頻器材技術規範

取得審驗證明之低功率射頻器材，非經核准，公司、商號或使用者均不得擅自變更頻率、加大功率或變更原設計之特性及功能。低功率射頻器材之使用不得影響飛航安全及干擾合法通信；經發現有干擾現象時，應立即停用，並改善至無干擾時方得繼續使用。前述合法通信，指依電信管理法規定作業之無線電通信。低功率射頻器材須忍受合法通信或工業、科學及醫療用電波輻射性電機設備之干擾。

614MHz-703MHz: 使用頻段供其他通訊業務使用時，器材應即停止使用

SRRC Notice

- (一) 本产品符合“微功率短距离无线电发射设备目录和技术要求”的具体条款和使用场景；
- (二) 不得擅自改变使用场景或使用条件、扩大发射频率范围、加大发射功率（包括额外加装射频功率放大器），不得擅自更改发射天线；
- (三) 不得对其他合法的无线电台（站）产生有害干扰，也不得提出免受有害干扰保护；
- (四) 应当承受辐射射频能量的工业、科学及医疗（ISM）应用设备的干扰或其他合法的无线电台（站）干扰；
- (五) 如对其他合法的无线电台（站）产生有害干扰时，应立即停止使用，并采取措施消除干扰后方可继续使用；
- (六) 在航空器内和依据法律法规、国家有关规定、标准划设的射电天文台、气象雷达站、卫星地球站（含测控、测距、接收、导航站）等军民用无线电台（站）、机场等的电磁环境保护区域内使用微功率设备，应当遵守电磁环境保护及相关行业主管部门的规定。

Regulatory Information for Wireless Products with Bluetooth

MIC Notice


運用に際しての注意

この機器の使用周波数帯では、電子レンジ等の産業・科学・医療用機器のほか工場の製造ライン等で使用されている移動体識別用の構内無線局（免許を要する無線局）及び特定小電力無線局（免許を要しない無線局）並びにアマチュア無線局（免許を要する無線局）が運用されています。

1. この機器を使用する前に、近くで移動体識別用の構内無線局及び特定小電力無線局並びにアマチュア無線局が運用されていないことを確認して下さい。
2. 万一、この機器から移動体識別用の構内無線局に対して有害な電波干渉の事例が発生した場合には、速やかに使用周波数を変更するか又は電波の発射を停止した上、下記連絡先にご連絡頂き、混信回避のための処置等（例えば、パーティションの設置など）についてご相談して下さい。
3. その他、この機器から移動体識別用の特定小電力無線局あるいはアマチュア無線局に対して有害な電波干渉の事例が発生した場合など何かお困りのことが起きたときは、保証書に記載の販売代理店または購入店へお問い合わせください。代理店および販売店情報は Shure 日本語ウェブサイト <http://www.shure.co.jp> でもご覧いただけます。

現品表示記号について

2.4 FH1



現品表示記号は、以下のことを表しています。この無線機器は 2.4GHz 帯の電波を使用し、変調方式は「FH-SS」方式、想定干渉距離は 10m です。2,400MHz～2,483.5MHz の全帯域を使用し、移動体識別装置の帯域を回避することはできません。

Environmental Regulatory Information

Waste Electrical and Electronic Equipment (WEEE) Directive



In the European Union and the United Kingdom, this label indicates that this product should not be disposed of with household waste. It should be deposited at an appropriate facility to enable recovery and recycling.

Registration, Evaluation, Authorization of Chemicals (REACH) Directive

REACH (Registration, Evaluation, Authorization of Chemicals) is the European Union (EU) and the United Kingdom (UK) chemical substances regulatory framework. Information on substances of very high concern contained in Shure products in a concentration above 0.1% weight over weight (w/w) is available upon request.

US California Perchlorate (for Coin Cell Battery)

This product's coin cell battery may contain perchlorate and may require special handling when recycled or disposed. See www.dtsc.ca.gov/hazardouswaste/perchlorate.

Recycling Information

Please consider the environment, electric products and packaging are part of regional recycling schemes and do not belong to regular household waste.

中国 RoHS

部件名称	有害物质					
	铅	汞	镉	六价铬	多溴联苯	多溴二苯醚
电路模块	X	○	○	○	○	○
金属组件	X	○	○	○	○	○
线缆及其组件	X	○	○	○	○	○
外壳	○	○	○	○	○	○
电源适配器*	X	○	○	○	○	○
电池组*	X	○	○	○	○	○
本表格依据 SJ/T11364 的规定编制。 ○: 表示该有害物质在该部件所有均质材料中的含量均在 GB/T26572 规定的限量要求以下。 X: 表示该有害物质至少在该部件某一均质材料中的含量超出 GB/T26572 规定的限量要求。 注: 本产品大部分的部件采用无害的环保材料制造, 含有有害物质的部件皆因全球技术发展水平的限制而无法实现有害物质的替代。 *:表示如果包含部分						

臺灣 RoHS

設備名稱: 無線耳機, 型號 (型式): MH36458 Equipment name Type designation (Type)		限制物質及其化學符號 Restricted substances and its chemical symbols				
單元 Unit	鉛Lead (Pb)	汞Mercury (Hg)	鎘Cadmium (Cd)	六價鉻Hexavalent chromium (Cr ⁶⁺)	多溴聯苯Polybrominated biphenyls (PBB)	多溴二苯醚Polybrominated diphenyl ethers (PBDE)
電路板	○	○	○	○	○	○
電子零件	—	○	○	○	○	○
金屬零件	○	○	○	○	○	○
外殼	○	○	○	○	○	○
線束	—	○	○	○	○	○
備考1: “超出0.1 wt %”及“超出0.01 wt %”係指限制物質之百分比含量超出百分比含量基準值。 Note 1: “Exceeding 0.1 wt %” and “exceeding 0.01 wt %” indicate that the percentage content of the restricted substance exceeds the reference percentage value of presence condition. 備考2: “○”係指該項限制物質之百分比含量未超出百分比含量基準值。 Note 2: “○” indicates that the percentage content of the restricted substance does not exceed the percentage of reference value of presence. 備考3: “—”係指該項限制物質為排除項目。 Note 3: The “—” indicates that the restricted substance corresponds to the exemption.						

Battery Regulatory Information

EU and UK Battery Directive



In the European Union and the United Kingdom, this label indicates that the batteries in this product should be collected separately and not be disposed of with household waste. Substances in batteries can have a potential negative impact on health and environment and you have a role in recycling waste batteries thus contributing to the protection, preservation, and improvement of the quality of the environment. You should contact your local authority or retailer for details of the collection and recycling schemes available.

Note: There is no mercury content in the product.

Regulatory Model Number (RMN)

For regulatory identification purposes your product has been assigned a regulatory model number (RMN). This regulatory model number should not be confused with product number, as below.

RMN

- Headphones: **MH36458**
- USB-C Bluetooth Adapter: **SBD001**

Product Numbers

- Headphones: **Aonic 50 Gen 2 UC**
- USB-C Bluetooth Adapter: **SBD1-UC**

Certifications

