

Tiki Ultra Bluetooth Speaker with LED Flame

User's Guide for Model ISBW374BDL v3275-01



Important Safety Instructions

- Read these Instructions.
- Keep these Instructions.
- Heed all Warnings.
- Follow all instructions.
- Do not use this apparatus near water.
- Clean only with a dry cloth.
- Do not block any ventilation openings. Install in accordance with the manufacturer's instructions.
- Do not install near any heat sources such as radiators, heat registers, stoves, or other apparatus (including amplifiers) that produce heat.
- Do not defeat the safety purpose of the polarized or grounding - type plug. A polarized plug has two blades with one wider than the other. A grounding type plug has two blades and a third grounding prong. The wide blade or the third prong are provided for your safety. When the provided plug does not fit into your outlet, consult an electrician for replacement of the obsolete outlet.
- Protect the power cord from being walked on or pinched particularly at plugs, convenience receptacles, and the point where they exit from the apparatus.
- Only use attachments/accessories specified by the manufacturer.
- Unplug this apparatus during lightning storms or when unused for long periods of time.
- Refer all servicing to qualified service personnel. Servicing is required when the apparatus has been damaged in any way, such as power-supply cord or plug is damaged, liquid has been spilled or objects have fallen into the apparatus, the apparatus has been exposed to rain or moisture, does not operate normally, or has been dropped.

FCC Warnings

Warning: Changes or modifications to this unit not expressly approved by the party responsible for compliance could void the user's authority to operate the equipment.

NOTE: This equipment has been tested and found to comply with the limits for a Class B digital device, pursuant to Part 15 of the FCC Rules. These limits are designed to provide reasonable protection against harmful interference in a residential installation. This equipment generates, uses, and can radiate radio frequency energy and, if not installed and used in accordance with the instructions, may cause harmful interference to radio communications. However,

there is no guarantee that interference will not occur in a particular installation. If this equipment does cause harmful interference to radio or television reception, which can be determined by turning the equipment off and on, the user is encouraged to try to correct the interference by one or more of the following measures:

- Reorient or relocate the receiving antenna.
- Increase the separation between the equipment and receiver.
- Connect the equipment into an outlet on a circuit different from that to which the receiver is connected.
- Consult the dealer or an experienced radio/TV technician for help.

Additional Warnings and Precautions

- **CAUTION:** TO PREVENT ELECTRIC SHOCK, MATCH WIDE BLADE OF PLUG TO WIDE SLOT, FULLY INSERT.
- Mains plug is used as disconnect device and it should remain readily operable during intended use. In order to disconnect the apparatus from the mains completely, the mains plug should be disconnected from the mains socket outlet completely.
- **WARNING:** Shock hazard - Do Not Open.
- **CAUTION:** Use of controls or adjustments or performance of procedures other than those specified may result in hazardous radiation exposure.
- **WARNING:** Changes or modifications to this unit not expressly approved by the party responsible for compliance could void the user's authority to operate the equipment.
- **WARNING:** Do not place this unit directly onto furniture surfaces with any type of soft, porous, or sensitive finish. As with any rubber compound made with oils, the feet could cause marks or staining where the feet reside. We recommend using a protective barrier such as a cloth or a piece of glass between the unit and the surface to reduce the risk of damage and/or staining.
- **WARNING:** Do not ingest battery, chemical burn hazard.
- Battery shall not be exposed to excessive heat such as sunshine, fire or the like.
- Lithium batteries, like all rechargeable batteries, are recyclable and should be recycled or disposed of according to state and local guidelines. They should never be disposed of in normal household waste, and they should never be incinerated, as they might explode. Contact your local government for disposal or recycling practices in your area.



WARNING: To reduce the risk of electric shock, do not remove cover (or back). No user-serviceable parts inside. Refer servicing to qualified service personnel.



The exclamation point within an equilateral triangle is intended to alert the user to the presence of important operating and maintenance (servicing) instructions in the literature accompanying the appliance.



The lightning flash with arrowhead symbol, within an equilateral triangle, is intended to alert the user to the presence of un-insulated "dangerous voltage" within the product's enclosure that may be of sufficient magnitude to constitute a risk of electric shock to persons.



This symbol indicates that this product incorporates double insulation between hazardous mains voltage and user accessible parts.



WARNING: This product can expose you to chemicals including lead, which is known to the State of California to cause cancer. For more information go to: www.P65Warnings.ca.gov **This product meets and complies with required Federal product guidelines.**

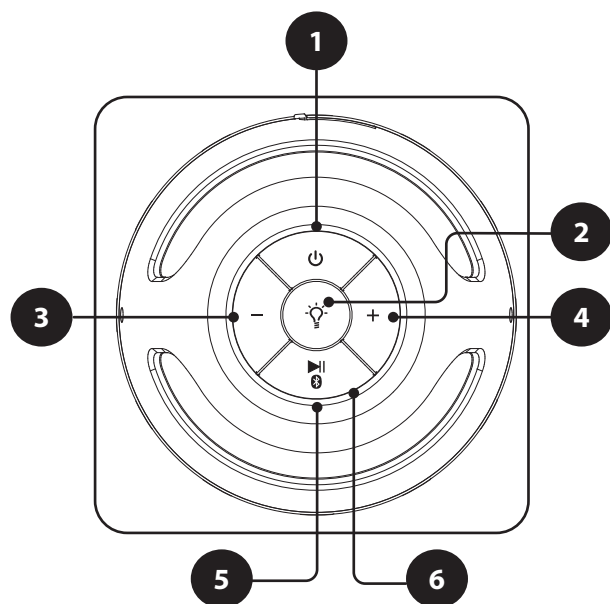
Features

- Bluetooth wireless: range approximately 59 ft
- IPX4 water resistant
- True Wireless Stereo (TWS)
- Flickering flame effects
- Removable yard stakes

Includes

- User's guide
- Micro-USB to USB cable (2x)
- Wall mounts (2x)
- Hanging hooks (2x)
- Removable ground stakes (in pieces) (2x)

Controls and Functions



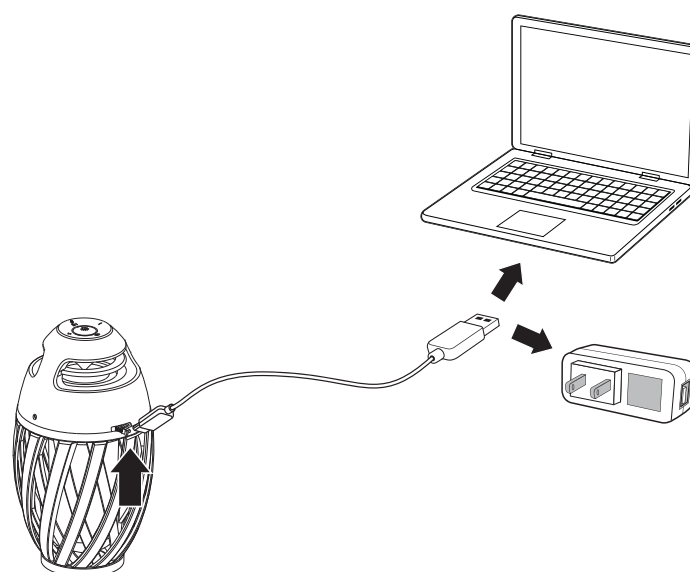
1. **Power:** Press and hold down to power the Bluetooth speaker on/off. Press twice to turn voice prompts on/off.
2. **Lights:** Press to turn flame flicker on/off. The speaker does not need to be on to turn on the lights.
3. **Vol -:** Press or hold down to decrease the volume.
4. **Vol +:** Press or hold down to increase the volume.
5. **Play/Pause/Pair:** Press to pause or resume playback. Press and hold to activate TWS pairing. Press twice to pair or unpair Bluetooth devices.
6. **LED Indicator Light**

Charging the Speakers

Charge fully before use. The charge time is approximately 5 hours.

When the speaker is charging, the **LED Indicator Light** will display a solid red light. When charging is complete, the indicator will turn off.

Using a Micro-USB to USB cable (included), connect the **DC Power Input** on the speaker to the USB port of a powered-on computer or USB power adaptor (not included) to charge the speaker.



Bluetooth Wireless

Pairing & Playing Audio on One Speaker

1. When powered on, the speaker will enter Bluetooth Mode automatically. The **LED Indicator Light** will start flashing.
2. Using the Bluetooth setting on your device, search for new devices and select **ISBW374**. Refer to the user's manual for your specific device for instructions on pairing and connecting Bluetooth devices.
3. When successfully paired, a voice prompt will announce "Bluetooth connected." The **LED Indicator Light** will display a solid blue light.
4. Use the controls on the connected device to select and begin playing audio. Use the controls on the speaker or the connected device to play, pause, and adjust volume.

Note: The unit will automatically connect to the last paired device when powering on. If your device becomes unpaired or it is unable to connect, press the **Play/Pause/Pair** button twice to disconnect and enter pairing mode. A voice prompt will announce "Bluetooth is connecting" start from step two to connect to your device.

Pairing & Playing Audio on Multiple Speakers (TWS)

1. Power on one of the ISBW374BDL speakers. Press and hold the **Play/Pause/Pair** button for at least 3 seconds to initiate pairing, this will be the main speaker.
2. Using the Bluetooth setting on your device, search for new devices and select **ISBW374**. To avoid confusion, delete any ISBW374 speakers from your saved devices Bluetooth settings to easily connect to the main speaker.
3. Then, power on one of the additional ISBW374BDL speakers. Press and hold the **Play/Pause/Pair** button to enter pairing mode. When successfully paired, the speaker will chime.
4. Repeat step 3 for all additional ISBW374BDL speakers.
5. Use the controls on the connected device to select and begin playing audio. Use the controls on the unit or the connected device to play, pause, and adjust volume.

Note: Once TWS pairing is enabled, the **LED Indicator light** on the main speaker will display a solid blue light. The **LED Indicator lights** on all other speakers will flash blue.

The main speaker controls will control all speakers connected to it. Turning down volume on the main speaker turns down volume on all speakers. Powering off the main speaker will also power off all connected speakers.

After the main speaker is powered off, TWS will end. To reconnect via TWS, repeat all connection steps.

Speakers will remain paired up to 33 feet between them.

Flame Flicker Mode

You can use the light control without powering on the speaker. Turn the lights on with the **Lights** button.

IPX4 Water Resistance

The ISBW374BDL features IPX4 level water-resistant protection. This speaker can withstand light water splashes from any angle. The speaker is not completely waterproof and should not be exposed to low- or high- pressure water streams, submerged in water, or left outside uncovered in rain.

Customer Support

To download this User's Guide in English, Spanish, or French, or to get answers to frequently asked questions, visit the support section at: www.iLiveElectronics.com

Para descargar este Manual del Usuario en inglés, español y francés, o para obtener respuestas a preguntas frecuentes, visite la sección de apoyo en: www.iLiveElectronics.com

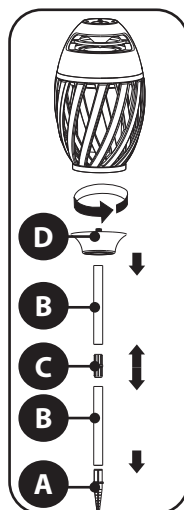
Pour télécharger ce guide de l'utilisateur en anglais, espagnol ou français, ou pour obtenir des réponses à des questions fréquemment posées, consultez la rubrique d'assistance sur: www.iLiveElectronics.com

For Warranty Information and the most up-to-date version of this User's Guide, go to www.iLiveElectronics.com

Customer Service: 1-888-999-4215 | Email Support: prodinfo@dpiinc.com | Email Parts: partsinfo@dpiinc.com

Copyright © 2024 Digital Products International (DPI, Inc.) All other trademarks appearing herein are the property of their respective owners. Specifications are subject to change without notice.

Mounting



Ground Stakes

1. Connect the stake (part A) to one of the poles (part B) by pushing the rounded end of the stake into the hollow end of the pole.
2. Add more pole sections alternating poles and plastic dowels (part C) until you reach your desired height.
3. Connect the threaded adapter (part D) to the end of the final pole section.
4. Screw the bottom of the speaker into place on top of the threaded adapter.

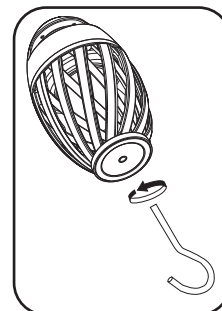
Note: To take the ground stakes apart, gently rotate the stake to detach it from the pole sections. Do not use excessive force.

Do not overtighten the speaker onto the threaded adapter. It may cause stripping.

Hanging Hooks

1. Flip the speaker upside down so the controls are on the bottom and the bottom of the speaker is on top.
2. Screw the hanging hook into the speaker.

Note: Do not overtighten the hanging hook onto the speaker. It may cause stripping

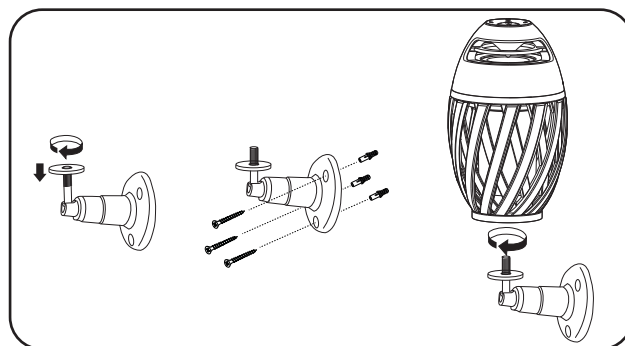


Wall Mount

Requires a washer, wall anchors, and screws (included)

1. Attach a washer to the wall mount by gently rotating the washer down the screw.
2. Select and mark your desired wall placement. Drill and insert wall anchors if necessary. Then, attach the wall mount to the wall with screws.
3. Screw the bottom of the speaker into place on top of the wall mount screw down to the washer.

Note: Do not overtighten the speaker onto the wall mount screw. It may cause stripping



**Protect for Today
Sustain for Tomorrow**