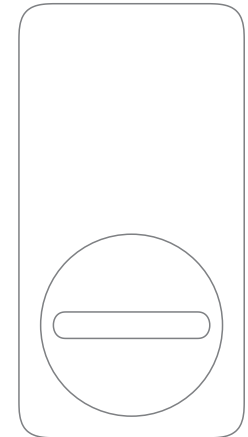


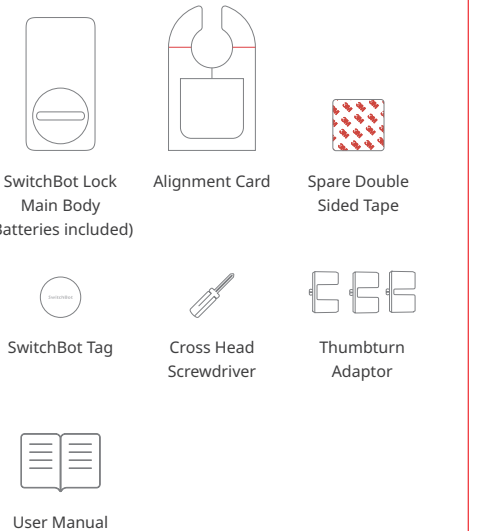
文件名称: Lock- SMS-EN2110	设计师:ZBH	完成时间:2021/10/14
版本号: V1.2-2110	成品尺寸:70mm X 105mm	
材质和工艺: 128g铜版纸 折页		
更改内容:部分文案修改。		
备注:红色线框不印刷		

SwitchBot Lock

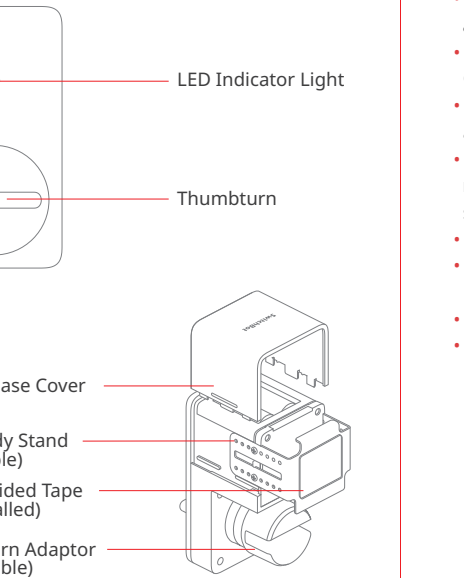
User Manual



Package Contents



Name of Parts



Preparation

- A smartphone or tablet with Bluetooth 4.2 or above.
- Download the SwitchBot app on App Store or Google Play Store.
- Open SwitchBot app and register for a SwitchBot account or log in directly if you have an account.
- (Optional) If you need to control SwitchBot Lock remotely, receive notifications or use third-party services, you must first set up SwitchBot Hub Mini.
- Cross head screwdriver (included in the package).
- Installation adjustment card (included in the package).
- Soft wiping towel (require user's preparation).
- Neutral detergent (require user's preparation).



Safety Information

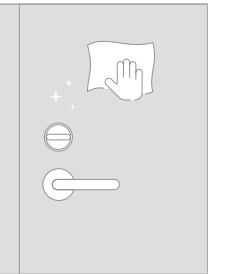
- Keep the device away from humid or hot environments, water and fire sources.
- This product is a precision-based electronic product. Please avoid applying physical damages.
- Do not attempt to disassemble, repair, or modify the device.
- Do not use the device where wireless devices are not allowed.

Installation Guide

Step 1: Clean the Installation Surface

Before installing SwitchBot Lock, please make sure that the surface for installation is free from dirt and dust, or this may weaken the stickiness of the lock and increase the chance of falling later.

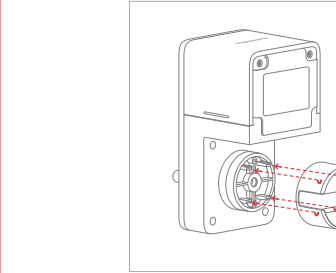
Use a small amount of detergent to clean the surface, wipe it down with water and wait until it dries.



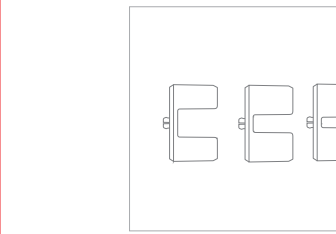
Step 2: Install SwitchBot Lock

1. Choose the thumbturn adaptor of the appropriate size.

The package provides thumbturn adaptor in 3 different sizes and one of them has already been installed on SwitchBot Lock.



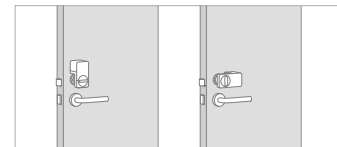
Install the thumbturn adaptor of the right size onto the main body SwitchBot Lock. You should be able to hear a click when it is firmly installed.



2. Confirm the place of installation and direction of the SwitchBot Lock.

Confirm the following based on the position of your lock and handle:

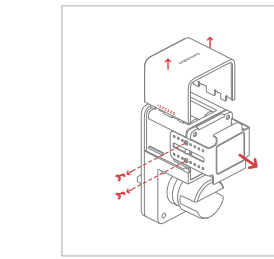
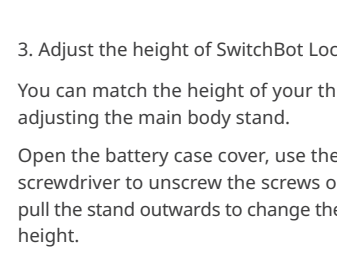
- Sufficient space near the thumbturn for installing the back of SwitchBot Lock's stand.
- SwitchBot Lock does not affect the use of the door handle.



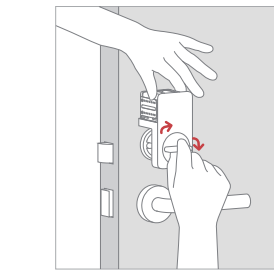
3. Adjust the height of SwitchBot Lock

You can match the height of your thumbturn by adjusting the main body stand.

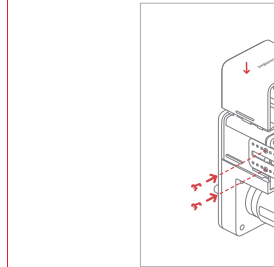
Open the battery case cover, use the cross head screwdriver to unscrew the screws on the stand, pull the stand outwards to change the installation height.



Before actually installing SwitchBot Lock, please don't peel off the protective layer of the double sided tape. Hold SwitchBot Lock firmly in your hand, turn the thumbturn and check whether you can lock and unlock the door smoothly.



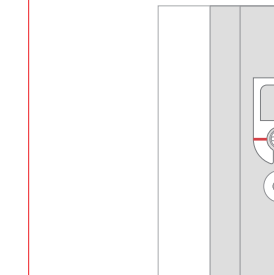
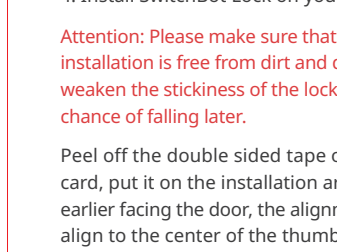
Once confirmed with the appropriate height of the stand, screw all the screws and close the battery case cover.



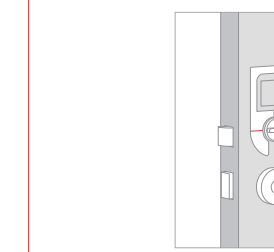
4. Install SwitchBot Lock on your door

Attention: Please make sure that the surface for installation is free from dirt and dust. Or this may weaken the stickiness of the lock and increase the chance of falling later.

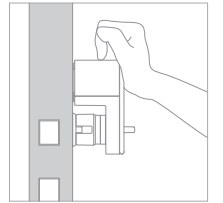
Peel off the double sided tape on the alignment card, put it on the installation area confirmed earlier facing the door, the alignment lines should align to the center of the thumbturn.



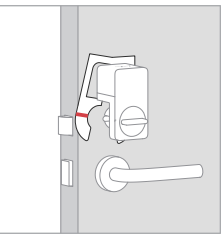
Peel off the protective layer from the double sided tape on the back of the SwitchBot Lock stand, align the back of the stand to the alignment card's square and stick it onto your door.



Push SwitchBot Lock's main body against the door for at least 2 minutes.



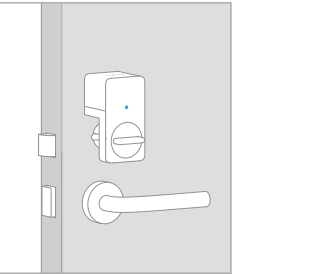
After installing SwitchBot Lock's main body, peel off the two sides of the alignment card.



Congratulations! You have completed SwitchBot Lock's installation.

Step 3: Add Device and Adjust

Remove the battery insulation sheet. After SwitchBot Lock gets its power, the LED indicator light on the front will blink, meaning that the device is waiting for pairing.



Open the SwitchBot app and tap the + icon on the top right corner of the homepage, choose the lock icon and add the device. Please follow the instructions on the app to complete adding the device and adjusting its position.

Precautions

- The product cannot unlock if the battery runs out entirely. Please regularly check on the app or the LED indicator light to ensure that the battery level is not too low and replace when needed. Please also bring your key to avoid being locked out.
- This product is for indoor use only.
- If you notice any product malfunction, please stop using immediately and contact our Customer Support Team.

LED Indicator Light

LED Indicator Light	Description
Blue light flashes slowly	Waiting for pairing/upgrading firmware
Blue light flashes rapidly	Pairing
Blue and red light flash slowly and alternately	Pairing failed/firmware upgrade failed
Steady green light	Successful locking/unlocking
Steady red light	Low battery/unusual activity
Steady blue light	Pause Auto-lock activated

Please visit support.switch-bot.com for more details.

Battery Replacement

When the battery level drops to lower than 20%, the device will notify you by flashing red and making a sound every time you lock/unlock the device. Please replace the 2 CR123A batteries by opening the main body's battery case cover as soon as possible.

Reset to Factory Settings

If you will not be using SwitchBot Lock, please delete it on SwitchBot app's Lock page. Once the device is deleted, all data you had would reset to its factory settings. Please be careful when doing so.

Please visit support.switch-bot.com for more details.

More Functions

Please visit <https://support.switch-bot.com/hc/en-us/articles/4410510590359> for more details.



Troubleshooting

Please visit support.switch-bot.com/hc/en-us/sections/4408365197079 for more details.



Disclaimer

This product is only used as a door locking control device and cannot avoid theft completely. In the event of a burglary, the company assumes no responsibility or liability for any loss or damage suffered by any person as a result of using the product.

Specifications

Color: Black
Material: PC+ABS
Size: 111.6 mm x 59 mm x 73.2mm (4.39 in x 2.32 in x 2.88 in)
Weight: 253 g (8.9 oz) (with batteries)
Power Source: 2 CR123A batteries
Battery Life: Approximately 6 months
Operating Environment: Indoor only
OS Compatibility: iOS 11.0+, Android 5.0+
Communication Method: Bluetooth 5.0
Operating Temperature: -10 °C to 45 °C (14 °F to 113 °F)
Relative Humidity: 10 % to 90 %

Return and Refund Policy

This product has a one-year warranty (begins from the date of purchase). The situations below do not fit the Return and Refund Policy.

- Intended damage or abuse.
- Inappropriate storage (damages caused by dropping or soaking in water).
- Modify or repair of product.
- Natural wearing of product.
- Natural disasters.

Contact & Support

Setup and Troubleshooting:
support.switch-bot.com
Support Email:
support@wondertechlabs.com
Feedback: If you have any concern or problem when using our product, please kindly send feedback from the Profile > Feedback page in the SwitchBot app.

CE Warning

Manufacturer's Name: Woan Technology (Shenzhen) Co., Ltd.
This product is a fixed location. To comply with RF exposure requirements, a minimum separation distance of 20cm must be maintained between the user's body and the device, including the antenna. Use only the supplied or an approved antenna.
This device in compliance with the essential requirements and other relevant provisions of Directive 2014/53/EU. All essential radio test suites have been carried out.
1.CAUTION : RISK OF EXPLOSION IF BATTERY IS REPLACED BY AN INCORRECT TYPE. DISPOSE OF USED BATTERIES ACCORDING TO THE INSTRUCTIONS
2.The device complies with RF specifications when the device used at 20cm from your body

FCC Warning

This device complies with part 15 of the FCC Rules. Operation is subject to the following two conditions: (1) This device may not cause harmful interference, and (2) this device must accept any interference received, including interference that may cause undesired operation. Any Changes or modifications not expressly approved by the party responsible for compliance could void the user's authority to operate the equipment.
This equipment has been tested and found to comply with the limits for a Class B digital device, pursuant to part 15 of the FCC Rules. These limits are designed to provide reasonable protection against harmful interference in a residential installation. This equipment generates uses and can radiate radio frequency energy and, if not installed and used in accordance with the instructions, may cause harmful interference to radio communications. However, there is no guarantee that interference will not occur in a particular installation.

If this equipment does cause harmful interference to radio or television reception, which can be determined by turning the equipment off and on, the user is encouraged to try to correct the interference by one or more of the following measures:

- Reorient or relocate the receiving antenna.
- Increase the separation between the equipment and receiver.
- Connect the equipment into an outlet on a circuit different from that to which the receiver is connected.
- Consult the dealer or an experienced radio/TV technician for help. The device has been evaluated to meet general RF exposure requirement. The device can be used in portable exposure condition without restriction. FCC RF exposure statement: The equipment complies with FCC Radiation exposure limit set forth for uncontrolled environment. This equipment should be installed and operated with minimum distance 20cm between the radiator and your body.