

Expect More TECHNOLOGY

OKI®



**The only manufacturer with end-to-end solutions
customized to answer your unique business needs**



Color MFPs



Color Printers



Mono MFPs



Mono Printers



Dot Matrix Printers



Label Printers



POS Printers

Expect More SOLUTIONS

The award-winning products, creative solutions and value-added services of OKI include one of the broadest lines of PC peripheral equipment in the industry. Our digital color and monochrome printers and multifunction products (MFPs), thermal label printers, point of sale (POS) printers, and dot matrix printers provide the best balance of value, cost and performance for your business.



Innovative products, solutions and services. OKI offers a broad portfolio of world-class printing technologies and solutions designed to manage workflow, optimize business performance, and achieve the highest levels of cost-efficiency. As business printing solutions specialists, we take a consultative approach to supporting every customer's needs.

Outstanding quality and reliability. OKI color and monochrome printers and multifunction devices are built to deliver fast speeds and superior output quality, provide feature sets for any application, and perform reliably and consistently day after day after day.

Total commitment to our customers. OKI is resolute in the commitment to exceed expectations and deliver comprehensive, individualized solutions that help drive your business goals. We value each customer as though you are our only one, addressing your needs as if they were our own.

Expect more from OKI.



Expect More **PERFORMANCE**

Digital color and monochrome printers and MFPs designed to deliver maximum productivity for your business

OKI offers groundbreaking technology to truly enhance everyday business productivity. Whether you want to optimize the quality and management of business communications or save on workspace and capital expenditure, printers and MFPs from OKI deliver your best value, backed by world-class customer service and support.

Our best-in-class digital color printers offer brilliant color quality and greater media flexibility, enabling you to create high-impact color reports, presentations, mailers, banners and many other types of communications, without the expense of using outside commercial printers.

Our complete line of reliable monochrome printers – desktop and workgroup – meet the most demanding requirements for performance, affordability, support and productivity in all types of environments. Our award-winning printers provide feature-rich black & white printing solutions – adaptable to any stand-alone or network printing environment.

A full line of color and mono MFPs, ranging from small desktop to large workgroup, offers fast, high-quality print and copy solutions. Their printing, scanning, copying and faxing capabilities can maximize productivity and space, and enable you to create and manage professional documents affordably and easily.



A one-stop shop for cost-efficient label printers and POS printers

The full line of thermal label and POS printers from OKI meets the needs of any workplace or application. It's a lineup that lets companies of all sizes select the printers that best match their performance requirements, with features like fast print speeds, variable print resolutions, built-in multiple interface capability, and superior media handling.

With their compact size, OKI label and POS printers will easily integrate into your environment, providing functionality in a wide range of industries, while requiring little or no training for your staff.



Dot matrix printers that thrive in the most demanding environments

Rugged and reliable dot matrix printers from OKI have led the industry in sales in North America for more than 30 years, and continue to hold the number one market share position.¹ Their print speed and versatile paper handling make them ideal for office, point of sale and warehouse applications, including the printing of multi-part forms, labels, receipts, and reports on cut-sheet or tractor-fed media.

From POS to high-volume, high-speed forms printing, OKI's 9-Pin, Dual 9-Pin and 24-Pin dot matrix printers offer the most technologically advanced features to deliver the productivity and reliability you need.



¹ IDC Hardcopy Peripherals, 2012

Brilliant Color



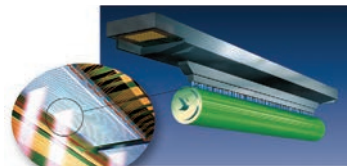
High Definition Color

It's easy to achieve outstanding results with HD (High Definition) Color printing, the unique collection of market-defining hardware and software technologies from OKI.

HD Color technologies deliver impressive color printing – simply and intelligently. There are four core elements that combine to deliver this breathtaking output:

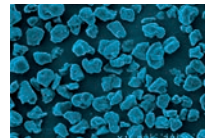
HD Color Printing Technology

High-definition LED Printheads – Fundamental to any digital printer is its light source. OKI has pioneered Digital LED printing, which has clear advantages over laser, delivering superior images and stronger colors – fast! Unlike laser printers, there are no moving parts within the LED mechanism, which means greater reliability.

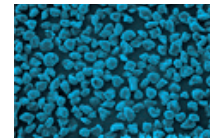


Multilevel LED printheads from OKI accurately control the intensity of the light source, resulting in up to 256 levels of color intensity.

Microfine High-definition Toner – Developed in conjunction with our printer technology, microfine toner ensures that documents are printed with superior print quality: graphics and text are sharper, crisper and glossier, even on ordinary office paper.

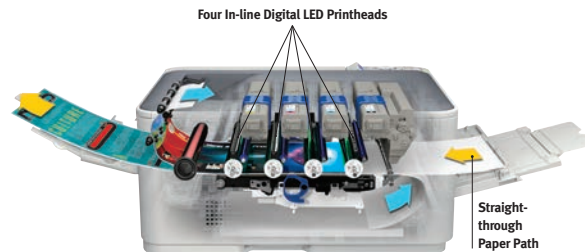


Conventional Crushed Toner



Microfine Toner from OKI

Single-pass Flat Paper Path – Our innovative Single Pass Color™ technology has enabled OKI to consistently lead the revolution in fast, affordable color printing. The straight-through paper path can handle heavy card stock or long banners – up to 52" (1.3m) in length – bringing media flexibility as well as machine reliability.



Printer Control System – Each printer has an advanced printer control system that constantly checks alignment, registration and color balance, to make printing as simple as it should be and ensure the quality of HD Color output every time.



Without Photo Enhance



With Photo Enhance

Media Flexibility

OKI®

Enabling you to do more

OKI single- and multifunction printers let you print or copy documents in a range of sizes and formats: letter- and legal-size sheets for day-to-day requirements – in breathtaking color or crisp black & white. Postcards, CD labels, even banners up to 52 inches in length, on stock up to 307 gsm, can all be produced in-house. Moreover, the excellent reproduction quality of our products is delivered on ordinary office paper – no special media are required, unless you specify them – helping to control costs while maintaining your image.



12" x 18"



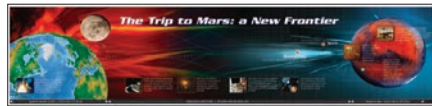
3" x 5"



4" x 6"



11.6" x 52"



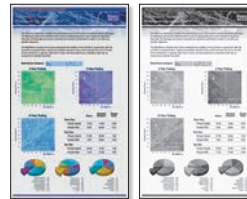
8.5" x 35.4"



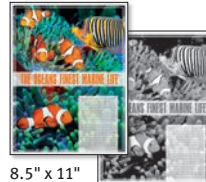
12.9" x 35.4"



11" x 17"



8.5" x 14"



8.5" x 11"



12.9" x 47.24"



5" x 7"



8.5" x 48"



DIGITAL COLOR PRINTERS



	C331dn	C531dn	C610 Series
	C610n/C610dn/C610cdn/C610dtn		
Performance			
Print Speed (Color/Mono)	Letter/A4: Up to 23 ppm Color, 25 ppm Mono ¹	Letter/A4: Up to 27 ppm Color, 31 ppm Mono ¹	Letter/A4: Up to 32 ppm Color, 34 ppm Mono ¹
1st Page Out (Color/Mono)	As fast as 9 seconds Color, 8.5 seconds Mono ¹	As fast as 8 seconds Color, 7.5 seconds Mono ¹	As fast as 9 seconds Color, 8 seconds Mono ¹
Resolution	Up to 1200 x 600 dpi	Up to 1200 x 600 dpi	Up to 1200 x 600 dpi
Processor	532 MHz PowerPC CPU	532 MHz PowerPC CPU	533 MHz PowerPC CPU
Memory (Standard/Max)	128 MB/640 MB	256 MB/768 MB	256 MB/768 MB
Memory Storage	N/A	16 GB SD Memory Card optional	16 GB SD Memory Card standard on C610cdn ⁷
Monthly Duty Cycle	Up to 45,000 pages	Up to 60,000 pages	Up to 75,000 pages
Compatibility			
Emulations	PCL® 5c, PCL 6; PostScript® 3™; IBM® ProPrinter®; Epson® FX	PCL 5c, PCL 6; PostScript 3; IBM ProPrinter; Epson FX	PCL 6, PCL 5c; PostScript 3; IBM PowerPrinter; Epson FX; Windows® Vista XPS; PDF v1.7
Interfaces	USB 2.0 Hi-speed; 10/100 Base-TX Ethernet Print Server	USB 2.0 Hi-speed; 10/100 Base-TX Ethernet Print Server	USB 2.0 Hi-speed; 10/100 Base-TX Ethernet Print Server; Parallel
Paper Handling			
Paper Input (Standard)	350 sheets (250-sheet main tray and 100-sheet multi-purpose feeder)	350 sheets (250-sheet main tray and 100-sheet multi-purpose feeder)	C610n/dn/cdn – 400 sheets (300-sheet Letter/Legal/Universal main tray and 100-sheet multi-purpose tray); C610dtn – 930 sheets (main tray, multi-purpose feeder and 530-sheet 2nd tray)
Paper Input (Max)	880 sheets with optional 530-sheet 2nd paper tray	880 sheets with optional 530-sheet 2nd paper tray	1,460 sheets with standard/optional 530-sheet 2nd/3rd trays ⁵
Duplex (2-sided) Printing	Standard	Standard	Standard on C610dn, C610dtn, C610cdn; optional on C610n
Media Sizes	3" x 5" to 8.5" x 52" banner ²	3" x 5" to 8.5" x 52" banner ²	3" x 5" to 8.5" x 52" banner
Environmental			
Printer Size (WxDxH)	16.1" x 19.8" x 9.5" (410mm x 504mm x 242mm)	16.1" x 19.8" x 9.5" (410mm x 504mm x 242mm)	17.1" x 21.5" x 13.4" (435mm x 547mm x 340mm)
Printer Weight (Approx.)	48.5 lb. (22.0 kg)	48.5 lb. (22.0 kg)	57.3 lb. (26.0 kg)
Consumables			
Standard Toner	3,000 pages CMY; 3,500 pages Black ^{3,4}	3,000 pages CMY; 3,500 pages Black ^{3,4}	6,000 pages CMY; 8,000 pages Black ^{3,4}
High-Capacity Toner	N/A	5,000 pages CMYK ^{3,4}	N/A
Image Drum	20,000 pages ⁵	20,000 page ⁵	20,000 pages ⁵
Warranty & Support			
Warranty	1-Year limited with Overnight Exchange ⁶ ; 5 Years on printheads	1-Year limited with Overnight Exchange ⁶ ; 5 Years on printheads	1-Year limited with Overnight Exchange ⁶ ; 5 Years on printheads
Support	Live, toll-free 24/7/365 ⁶	Live, toll-free 24/7/365 ⁶	Live, toll-free 24/7/365 ⁶
	¹ Published performance results based on laboratory testing. Individual results may vary. ² Optimal performance on larger files may require additional memory. ³ CMYK declared yield in accordance with ISO/IEC 19798.	⁴ Printers ship with the following toner cartridge sizes: C331dn – 1,000-pg. CMYK starter; C531dn/C610 Series/C831 Series – 2,000-pg. CMYK starter; C711 Series – 4,000-pg. CMYK starter; C9650 Series – 7,500-pg. CMYK standard.	⁵ Varies depending on number of printed pages per job. ⁶ Available in the U.S. and Canada only. ⁷ Optional 16 GB SD Memory Card available on C531dn, C610n/dn/dtn, C711 Series and C831n; 40 GB Hard Disk Drive on C9650n/dn.



C9650 Series models shown with optional paper capacity and finisher

C711 Series	C831 Series	C9650 Series
C711n/C711dn/C711dtn	C831n/C831dn	C9650n/C9650dn/C9650hdn
Letter/A4: Up to 34 ppm Color, 36 ppm Mono ¹	Letter/A4: Up to 35 ppm Color and Mono ¹ Tabloid/A3: Up to 20 ppm Color and Mono ¹	Letter/A4: Up to 36 ppm Color, 40 ppm Mono ¹ Tabloid/A3: Up to 19 ppm Color, 22 ppm Mono ¹
As fast as 9 seconds Color, 8 seconds Mono ¹	As fast as 9.5 seconds ¹	As fast as 10.5 seconds Color, 9 seconds Mono ¹
Up to 1200 x 600 dpi	Up to 1200 x 600 dpi	Up to 1200 x 600 dpi
533 MHz	800 MHz PowerPC	800 MHz PowerPC 750
256 MB/768 MB	256 MB/768 MB	512 MB/1 GB
16 GB SD Memory Card option ⁷	16 GB SD Memory Card option ⁷	40 GB Hard Disk Drive standard on C9650hdn ⁷
Up to 100,000 pages	Up to 75,000 pages	Up to 150,000 pages
PCL 6, PCL 5c; PostScript 3; IBM PowerPrinter; Epson FX; Windows Vista XPS; PDF Direct Print v1.7	PCL 6, PCL 5c; PostScript 3; IBM ProPrinter and Epson FX; PDF Direct Print v1.8	PCL 5c, PCL 6 and Adobe PostScript 3; Direct PDF Printing ⁹
USB 2.0 Hi-speed; 10/100 Base-TX Ethernet Print Server; Parallel	USB 2.0 Hi-speed; 10/100 Base-TX Ethernet Print Server	10/100/1000 Base-TX Ethernet Print Server; USB v2.0; Parallel
C711n/C711dn – 630 sheets (530-sheet Letter/Legal/Universal tray and 100-sheet multi-purpose feeder); C711dtn – 1,160 sheets standard	400 sheets (300-sheet Letter/Legal/Tabloid/Universal tray and 100-sheet multi-purpose feeder)	760 sheets (530-sheet Letter/Legal/Tabloid-Extra/Universal tray and 230-sheet multi-purpose feeder)
1,690 sheets with standard/optional 530-sheet 2nd/3rd trays ⁸	1,460 sheets with optional 2nd and 3rd 530-sheet paper trays	2,880 sheets with optional paper trays
Standard on C711dn/C711dtn; optional on C711n	Standard on C831dn; optional on C831n	Standard on C9650dn and C9650hdn; optional on C9650n
3" x 5" to 8.5" x 52" banner	3" x 5" to 11.6" x 52" banner	3" x 5" to 12.9" x 47.24" banner
17.1" x 21.5" x 15.3" (435mm x 547mm x 389mm)	17.6" x 21.7" x 14.2" (449mm x 552mm x 360mm) ¹¹	23.6" x 24.6" x 18.5" (599mm x 625mm x 469mm)
60.8 lb. (27.6 kg)	81.5 lb. (37.0 kg)	167.5 lb. (76.0 kg)
11,500 pages CMY; 11,000 pages Black ^{3,4}	10,000 pages CMY ⁴	22,000 pages CMY; 22,500 Black ¹⁰
N/A	N/A	N/A
20,000 pages ⁵	30,000 pages	42,000 pages ⁵
1-Year limited with Overnight Exchange ⁶ ; 5 Years on printheads	1-Year limited On-Site ⁶ ; 5 Years on printheads	1-Year limited On-Site, parts and labor ⁶ ; 5 Years on printheads
Live, toll-free 24/7/365 ⁶	Live, toll-free 24/7/365 ⁶	Live, toll-free 24/7/365 ⁶

⁸ 2nd Paper Tray standard on C610dtn and C711dtn, optional on other models in series.

⁹ Requires Hard Disk Drive (optional on C9650n/dn).

¹⁰ Letter-size pages @ 5% coverage.

¹¹ Includes weight of consumables.



COLOR MULTIFUNCTION PRODUCTS



MC362w MFP

MC562w MFP

MC770

Letter/A4

Letter/A4

Letter/A4

Printer			
Print Speed (Color/Mono)	Up to 23 ppm Color, 25 ppm Mono ¹	Up to 27 ppm Color, 31 ppm Mono ¹	Up to 35 ppm Color, 37 ppm Mono ¹
1st Page Out (Color/Mono)	As fast as 9 seconds Color, 8.5 seconds Mono ¹	As fast as 8 seconds Color, 7.5 seconds Mono ¹	As fast as 9 seconds Color, 8 seconds Mono ¹
Print Quality/Resolution	Up to 1200 x 600 dpi	Up to 1200 x 600 dpi	Up to 1200 x 600 dpi
Interfaces	USB v2.0 High Speed; 10/100 Base-TX Ethernet (network); Wireless; Apple® AirPrint™	USB v2.0 High Speed; 10/100 Base-TX Ethernet (network); Wireless; Apple® AirPrint™	1 Gigabit Ethernet (10/100/1000 Base-TX); High-speed USB; USB Host (x2)
Monthly Duty Cycle	Up to 45,000 prints/copies	Up to 60,000 prints/copies	Up to 120,000 prints/copies
Recommended Monthly Volume	3,000 pages	5,000 pages	1,000 – 6,000 pages
Duplex (2-sided) Printing	Standard	Standard	Standard
Memory Storage	SD Flash Cards: 4 GB standard, 16 GB optional	SD Flash Cards: 4 GB standard, 16 GB optional	160 GB secured HDD, standard
Copier			
Copy Speed	Up to 23 cpm Color, 25 cpm Mono ¹	Up to 27 cpm Color, 31 cpm Mono ¹	Up to 35 cpm Color, 37 cpm Mono ¹
Resolution	Up to 600 x 600 dpi	Up to 600 x 600 dpi	Up to 600 x 600 dpi
ADF Capacity	Up to 50 letter/legal sheets	Up to 50 letter/legal sheets	Up to 100 letter-size sheets (Reversing ADF)
Max Number of Copies	99 copies	99 copies	Up to 999 copies
Scanner			
Scan Resolution	Up to 1200 x 1200 dpi	Up to 1200 x 1200 dpi	Up to 600 dpi
Scan-to Functionality	Scan to E-mail with LDAP support; to USB memory stick; to FTP sites; to network; and to PC	Scan to E-mail with LDAP support; to USB memory stick; to FTP sites; to network; and to PC	Scan to Filing box; Shared folder; E-mail; USB memory stick; WSD scan
File Formats Supported	PDF, TIFF, JPEG, XPS	PDF, TIFF, JPEG, XPS	PDF, Secure PDF, TIFF, JPEG, XPS
Fax			
Modem Speed	33.6 Kbps Super G3	33.6 Kbps Super G3	33.6 Kbps Super G3
Transmission Speed	3 seconds/page ²	3 seconds/page ²	3 seconds/page ²
Fax Memory	4 MB (200 pages ³)	4 MB (200 pages ³)	1 GB (shared)
Paper Handling			
Standard Paper Input	250 sheets + 100 sheet multi-purpose tray	250 sheets + 100 sheet multi-purpose tray	530 sheets + 100 sheet multi-purpose tray
Maximum Paper Input	880 sheets	880 sheets	3,160 sheets
Finishing Capabilities	N/A	N/A	N/A
Environmental			
Operator Panel	5-line, 3.5" tilting backlit LCD display; Alphanumeric keypad; 1-touch fax dials	5-line, 3.5" tilting backlit LCD display; Alphanumeric keypad; 1-touch fax dials; Full QWERTY keyboard	9" color graphic touchscreen; Alphanumeric keypad; Function buttons
MFP Size (WxDxH) (Basic Model)	16.8" x 20.0" x 17.5" (427mm x 509mm x 444mm)	16.8" x 20.0" x 17.5" (427mm x 509mm x 444mm)	20.6" x 23.8" x 26.6" (522mm x 604mm x 675mm)
MFP Weight (Approx.)	63.0 lb. (29.0 kg)	63.0 lb. (29.0 kg)	105.8 lb. (48 kg)
Warranty/Support			
System Warranty	3-Year limited Carry-in/Depot ³	3-Year limited Carry-in/Depot ³	1-Year limited On-Site ³
Support	Live, toll-free 24/7/365 ³	Live, toll-free 24/7/365 ³	Live, toll-free 24/7/365 ³

¹ Published performance results based on laboratory testing. Individual results may vary.

² Based on ITU-T Test Chart #1.

³ Available in the U.S. and Canada only.

⁴ Requires optional PCI slot.

⁵ Call 800.OKI.DATA (800.654.3282) for warranty details.



CX4545x MFP with Large Capacity Feeder (shown with optional Multi-Position Finisher)

MC780/MC780f/MC780fx	CX3535t MFP	CX4545x MFP
Letter/A4	Tabloid/A3	Tabloid/A3
Up to 42 ppm Color, 42 ppm Mono ¹	35 ppm Color/Mono ¹	45 ppm Color/Mono ¹
As fast as 9 seconds Color, 8 seconds Mono ¹	N/A	N/A
Up to 1200 x 600 dpi	Up to 600 x 600 dpi	Up to 600 x 600 dpi
1 Gigabit Ethernet (10/100/1000 Base-TX); High-speed USB; USB Host (x2)	Standard 1000 Base-TX Ethernet, USB 2.0; optional Wireless LAN (requires optional antenna), Bluetooth®	Standard 1000 Base-TX Ethernet, USB 2.0; optional Wireless LAN (requires optional antenna), Bluetooth®
Up to 150,000 prints/copies	Up to 70,000 prints/copies	Up to 70,000 prints/copies
2,000 – 10,000 pages	N/A	N/A
Standard	Standard	Standard
160 GB secured HDD, standard	80 GB HDD, standard	80 GB HDD, standard
Up to 42 cpm Color, 42 cpm Mono ¹	Up to 35 cpm Color/Mono ¹	Up to 45 cpm Color/Mono ¹
Up to 600 x 600 dpi	Up to 600 x 600 dpi Color; up to 2,400 x 600 dpi Mono	Up to 600 x 600 dpi Color; up to 2,400 x 600 dpi Mono
Up to 100 letter-size sheets (Reversing ADF)	Up to 100 sheets (Reversing ADF)	Up to 100 sheets (Reversing ADF)
Up to 999 copies	Up to 999 copies	Up to 999 copies
Up to 600 dpi	Up to 600 x 600 dpi	Up to 600 x 600 dpi
Scan to Filing box; Shared folder; E-mail; USB memory stick; WSD scan	Folder (PC/Network); Hard disk; USB; E-mail (LDAP/SMTP); Server (FTP/HTTP); e-File to Hard Disk Drive; Optional MetaScan Enabler for XML scan-to features	Folder (PC/Network); Hard disk; USB; E-mail (LDAP/SMTP); Server (FTP/HTTP); e-File to Hard Disk Drive; Optional MetaScan Enabler for XML scan-to features
PDF, Secure PDF, TIFF, JPEG, XPS	TIFF, XPS, PDF, JPEG	TIFF, XPS, PDF, JPEG
33.6 Kbps Super G3	Optional 33.6 Kbps Super G3	Optional 33.6 Kbps Super G3
3 seconds/page ²	Approx. 3 sec./page ²	Approx. 3 sec./page ²
1 GB (shared)	Included in 1 GB System Memory	Included in 1 GB System Memory
MC780: 530 sheets + 100 sheet multi-purpose tray	1,750 sheets	3,700 sheets
MC780f: 1,160 sheets, MC780fx: 2,630 sheets		
MC780/MC780fx: 3,160 sheets, MC780f: 1,690 sheets	3,700 sheets	3,700 sheets
MC780: 20-sheet off-line stapler; MC780f, MC780fx: 50-sheet inline stapler	250-sheet Stationary Tray, 2,000 sheet Finishing Tray	250-sheet Stationary Tray, 2,000 sheet Finishing Tray
	50-sheet Staple capacity, 2-3 hole punch unit	50-sheet Staple capacity, 2-3 hole punch unit
9" color graphic touchscreen; Alphanumeric keypad; Function buttons	8.5" backlit color LCD display; Tilting touch-screen; QWERTY keyboard	8.5" backlit color LCD display; Tilting touch-screen; QWERTY keyboard
MC780: 20.6" x 23.8" x 26.6" (522mm x 604mm x 675mm)	30" x 28" x 29" (762mm x 711mm x 736mm)	30" x 28" x 29" (762mm x 711mm x 736mm)
MC780f: 20.6" x 23.8" x 42.5" (522mm x 604mm x 1,079mm)		
MC780fx: 20.6" x 23.8" x 47.8" (522mm x 604mm x 1,215mm)		
MC780: 105.8 lb. (48 kg); MC780f: 176.4 lb. (80 kg); MC780fx: 172.4 lb. (78.2 kg)	267 lb. (121.1 kg)	267 lb. (121.1 kg)
1-Year limited On-Site ³	90-Day limited On-Site ⁵	90-Day limited On-Site ⁵
Live, toll-free 24/7/365 ³	Live, toll-free 24/7/365 ³	Live, toll-free 24/7/365 ³



DIGITAL MONOCHROME PRINTERS



	B411 Series B411d/B411dn	B420dn	B431 Series B431d/B431dn	B4600 Series B4600/B4600n/B4600n PS
Performance				
Print Speed	Up to 35 ppm ¹	Up to 30 ppm ¹	Up to 40 ppm ¹	Up to 27 ppm ¹
1st Page Out	As fast as 5 seconds ¹	As fast as 5.5 seconds ¹	As fast as 5 seconds ¹	As fast as 5.0 seconds ¹
Resolution	Up to 2400 x 600 dpi	Up to 2400 x 600 dpi	Up to 1200 x 1200 dpi	Up to 2400 x 600 dpi
Processor	330 MHz	297 MHz	330 MHz	266 MHz/32-bit PowerPC
Memory (Standard/Max)	64 MB/320 MB	32 MB/288 MB	64 MB/320 MB	32 MB/288 MB
Memory Storage	N/A	N/A	N/A	N/A
Monthly Duty Cycle	Up to 80,000 pages	Up to 70,000 pages	Up to 80,000 pages	Up to 40,000 pages
Recommended Monthly Volume	N/A	N/A	N/A	N/A
Compatibility				
Emulations	PCL® 5e, PCL 6; IBM® ProPrinter® III XL; Epson® FX	PCL 5e, PCL 6; IBM ProPrinter III XL; Epson FX	PCL 5e, PCL 6; PostScript® 3™; IBM ProPrinter III XL; Epson FX;	PCL 5e, PCL 6; IBM ProPrinter III XL; Epson FX; PostScript 3 standard on B4600n PS (optional on B4600/B4600n)
Interfaces	B411d – USB v2.0; B411dn – USB v2.0, Parallel, OkiLAN® 10/100 Base-TX Ethernet Print Server	USB v2.0, Parallel, OkiLAN 10/100 Base-TX Ethernet Print Server	B431d – USB v2.0; B431dn – USB v2.0, Parallel, OkiLAN 10/100 Base-TX Ethernet Print Server	USB v2.0 and Parallel standard; Ethernet via OkiLAN Internal or External Print Server ⁴ ; optional Serial
Paper Handling				
Paper Input (Standard)	250-sheet standard tray and 1-sheet multi-purpose tray	580 sheets (530-sheet standard paper tray and 50-sheet multi-purpose tray)	350 sheets (250-sheet standard tray and 100-sheet multi-purpose tray)	250-sheet Letter/Legal/Universal tray; single-sheet manual feed slot
Paper Input (Max)	780 sheets with optional 530-sheet 2nd tray	1,110 sheets with optional 530-sheet 2nd tray	880 sheets with optional 530-sheet 2nd tray	750 sheets with optional 500-sheet 2nd tray
Duplex (2-sided) Printing	Standard	Standard	Standard	Manual
Media Sizes	3.4" x 5.5" min. to 8.5" x 14" max.	3.4" x 5.5" min. to 8.5" x 14" max.	3.4" x 5.5" min. to 8.5" x 14" max.	3.5" x 5.8" min. to 8.5" x 14" max.
Environmental				
Printer Size (WxDxH)	15.2" x 14.3" x 9.6" (386mm x 363mm x 244mm)	14.5" x 15.6" x 11.7" (369mm x 395mm x 297mm)	15.2" x 14.3" x 9.6" (386mm x 363mm x 244mm)	14" x 15.6" x 8.5" (355mm x 396mm x 216mm)
Printer Weight (Approx.)	26 lb. (11.8 kg)	24 lb. (10.8 kg)	26 lb. (11.8 kg)	22 lb. (10.0 kg)
Consumables				
Toner (Standard/High-Capacity)	4,000 pages ^{2,3}	3,500 pages/12,000 pages ^{2,3}	4,000 pages/12,000 pages ^{2,3}	3,000 pages/7,000 pages ^{2,3}
Image Drum	30,000 pages ⁴	25,000 pages ⁴	30,000 pages ⁴	25,000 pages ⁴
Warranty & Support				
Warranty	1-Year limited with Overnight Exchange ⁵ ; 5 Years on printhead	1-Year limited with Overnight Exchange ⁵ ; 5 Years on printhead	1-Year limited with Overnight Exchange ⁵ ; 5 Years on printhead	1-Year limited with Overnight Exchange ⁵ ; 5 Years on printhead
Support	Live, toll-free 24/7/365 ⁵	Live, toll-free 24/7/365 ⁵	Live, toll-free 24/7/365 ⁵	Live, toll-free 24/7/365 ⁵

¹ Published performance results based on laboratory testing. Individual results may vary.

² Declared yield in accordance with ISO/IEC 19752.

³ Printers ship with the following toner cartridges: B411/B431 Series – 2,000-pg. starter; B420dn – 1,500-pg. starter; B4600 Series – 3,000-pg. standard; B710/B720/B730 Series and B721dn/B731dn 10,000-pg. starter; B930 Series – 15,000-pg. standard.



B720 shown with optional 3rd paper tray



B730 shown with optional 3rd and 4th paper trays



B930 shown with multiple options

B710 Series	B720 Series	B721dn	B730 Series	B731dn	B930 Series
B710n/B710dn	B720n/B720dn		B730n/B730dn	B731dn	B930n/B930dn
Up to 42 ppm, 26.5 ipm duplex ¹	Up to 47 ppm, 27.5 ipm duplex ¹	Letter/A4 Up to 49 ppm, 40 ipm duplex ¹	Up to 52 ppm, 30 ipm duplex ¹	Up to 55 ppm, 42 ipm duplex ¹	Up to 50 ppm, 50 ipm duplex ¹
7.9 seconds simplex, 11.1 seconds duplex ¹	7.9 seconds simplex, 11.1 seconds duplex ¹	As fast as 5 seconds ¹	7.9 seconds simplex, 11.1 seconds duplex ¹	As fast as 5 seconds ¹	As fast as 7 seconds ¹
Up to 1200 x 1200 dpi	Up to 1200 x 1200 dpi	Up to 1200 x 1200 dpi	Up to 1200 x 1200 dpi	Up to 1200 x 1200 dpi	Up to 1200 x 1200 dpi
600 MHz	600 MHz	800 MHz	600 MHz	800 MHz	600 MHz
128 MB/640 MB	128 MB/640 MB	256 MB/768 MB	128 MB/640 MB	256 MB/768 MB	256 MB/768 MB
40 GB HDD and 512 MB Compact Flash Kit optional	40 GB HDD and 512 MB Compact Flash Kit optional	160 GB HDD optional	40 GB HDD and 512 MB Compact Flash Kit optional	160 GB HDD optional	40 GB HDD optional
2,000 – 15,000 pages	3,000 – 20,000 pages	Up to 250,000 pages	5,000 – 30,000 pages	Up to 280,000 pages	Up to 300,000 pages
N/A	N/A	3,000 – 20,000 pages	N/A	5,000 – 30,000 pages	N/A
PCL 5e, PCL 6; Adobe® Postscript 3; Epson FX-80	PCL 5e, PCL 6; Adobe Postscript 3; Epson FX-80	PCL 5e, PCL 6; Postscript 3; PDF v1.8; IBM ProPrinter; Epson FX	PCL 5e, PCL 6; Adobe Postscript 3; Epson FX-80	PCL 5e, PCL 6; Postscript 3; PDF v1.8; IBM ProPrinter; Epson FX	PCL 5e, PCL 6; PostScript 3; Epson FX
Standard: High-speed USB v2.0; RJ45 Ethernet Print Server (10/100 Base-TX); IEEE Bi-directional Parallel; and RS232-C Serial Optional: 1 Gigabit Ethernet (10/100/1000 Base-TX)	Standard: High-speed USB v2.0; RJ45 Ethernet Print Server (10/100 Base-TX); IEEE Bi-directional Parallel; and RS232-C Serial Optional: 1 Gigabit Ethernet (10/100/1000 Base-TX)	High-speed USB; USB Host; 1 Gigabit Ethernet (10/100/1000 Base-TX)	Standard: High-speed USB v2.0; RJ45 Ethernet Print Server (10/100 Base-TX); IEEE Bi-directional Parallel; and RS232-C Serial Optional: 1 Gigabit Ethernet (10/100/1000 Base-TX)	High-speed USB; USB Host; 1 Gigabit Ethernet (10/100/1000 Base-TX)	Standard: High-speed USB v2.0; RJ45 Ethernet Print Server (10/100 Base-TX); IEEE Bi-directional Parallel; and RS232-C Serial Optional: 1 Gigabit Ethernet (10/100/1000 Base-TX)
700-sheets (150-sheet 1st tray + 550-sheet 2nd tray)	700-sheets (150-sheet 1st tray + 550-sheet 2nd tray)	630-sheets (530-sheet 1st tray + 100-sheet multi-purpose tray)	700-sheets (150-sheet 1st tray + 550-sheet 2nd tray)	630-sheets (530-sheet 1st tray + 100-sheet multi-purpose tray)	1,100 sheets (2 @ 500-sheet Letter/A4 trays and 100-sheet multi-purpose feeder)
1,800 sheets with optional 550-sheet 3rd and 4th trays	1,800 sheets with optional 550-sheet 3rd and 4th trays	3,160 sheets with optional 530-sheet 2nd tray and optional 2,000-sheet feeder	1,800 sheets with optional 550-sheet 3rd and 4th trays	3,160 sheets with optional 530-sheet 2nd tray and optional 2,000-sheet feeder	5,100 sheets with optional 2,000-sheet 3rd/4th trays and 2,000-sheet High-Capacity Feeder
Standard on B710dn; optional on B710n	Standard on B720dn; optional on B720n	Standard	Standard on B730dn; optional on B730n	Standard	Standard on B730dn; optional on B730n
3" x 5" min. to 8.5" x 14" and up to 8.5" x 48" banners	3" x 5" min. to 8.5" x 14" and up to 8.5" x 48" banners	3" x 5" min. to 8.5" x 14"	3" x 5" min. to 8.5" x 14" and up to 8.5" x 48" banners	3" x 5" min. to 8.5" x 14"	5.8" x 8.3" min. to 11" x 17" max.
16.6" x 18.3" x 15.9" (422mm x 465mm x 404mm)	16.6" x 18.3" x 15.9" (422mm x 465mm x 404mm)	17.1" x 19.6" x 16.1" (435mm x 499mm x 410mm)	16.6" x 18.3" x 15.9" (422mm x 465mm x 404mm)	17.1" x 19.6" x 16.1" (435mm x 499mm x 410mm)	20.0" x 25.0" x 21.0" (508mm x 635mm x 533mm)
46.5 lb. (21 kg)	46.5 lb. (21 kg)	59.5 lb. (27 kg)	46.5 lb. (21 kg)	59.5 lb. (27 kg)	90 lb. (32.1 kg)
15,000 pages ²	15,000/20,000 pages ²	18,000/25,000 pages ^{2,3}	15,000/26,000 pages ²	18,000/25,000/36,000 pages ^{2,3}	33,000 pages ^{2,3}
1-piece print cartridge	1-piece print cartridge	1-piece print cartridge	1-piece print cartridge	1-piece print cartridge	60,000 pages ⁴
1-Year limited On-Site ⁵	1-Year limited On-Site ⁵	1-Year limited On-Site ⁵	1-Year limited On-Site ⁵	1-Year limited On-Site ⁵	1-Year limited On-Site ⁵
Live, toll-free 24/7/365 ⁵	Live, toll-free 24/7/365 ⁵	Live, toll-free 24/7/365 ⁵	Live, toll-free 24/7/365 ⁵	Live, toll-free 24/7/365 ⁵	Live, toll-free 24/7/365 ⁵

⁴ Varies depending on the number of printed pages per job.

⁶ Optional on B4600.

⁵ Available in the U.S. and Canada only.



OKI®

MONOCHROME MULTIFUNCTION PRODUCTS



	MB461 MFP	MB471 MFP/MB471w MFP	MB480 MFP	MB491 MFP
	3-in-1	4-in-1	4-in-1	4-in-1
Printer				
Print Speed	Up to 35 ppm ¹	Up to 35 ppm ¹	Up to 30 ppm ¹	Up to 42 ppm ¹
1st Page Out	As fast as 5 seconds ¹	As fast as 5 seconds ¹	As fast as 5.5 seconds ¹	As fast as 5 seconds ¹
Print Quality/Resolution	Up to 2400 x 600 dpi	Up to 1200 x 1200 dpi	Up to 1200 x 1200 dpi	Up to 1200 x 1200 dpi
Interfaces	10/100 Base-TX Ethernet; USB 2.0 (Device and Host)	10/100 Base-TX Ethernet; USB 2.0 (Device and Host)	USB 2.0 Hi-speed; IEEE1284 Parallel; 10/100 Base-TX Ethernet	10/100 Base-TX Ethernet; USB 2.0 (Device and Host)
Duplex (2-sided) Printing	Standard	Standard	Standard	Standard
Monthly Duty Cycle	Up to 60,000 pages	Up to 60,000 pages	Up to 70,000 pages	Up to 80,000 pages
Recommended Monthly Volume	500 – 4,000 pages	500 – 4,000 pages	750 – 4,000 pages	500 – 4,000 pages
Copier				
Copy Speed	Up to 35 cpm ¹	Up to 35 cpm ¹	Up to 22 cpm ¹	Up to 40 cpm ¹
Time to First Copy	As fast as 11 seconds ¹	As fast as 11 seconds ¹	As fast as 14 seconds ¹	As fast as 10 seconds ¹
ADF Capacity	Up to 50-sheet Duplexing/Reversing ADF	Up to 50-sheet Duplexing/Reversing ADF	Up to 50-sheet Duplexing/Reversing ADF	Up to 50-sheet Duplexing/Reversing ADF
Max Number of Copies	99 copies	99 copies	99 copies	99 copies
Scanner				
Scanner Platen Size	Letter/A4	Letter/A4	Letter/A4	Letter/A4
Scan Resolution	Up to 600 dpi	Up to 600 dpi	Up to 600 dpi	Up to 600 dpi
Scan-to Functionality	Scan to folder (CIFS), E-mail (with LDAP support), FTP, TWAIN, WIA, HTTP, USB memory, Application with Actkey software	Scan to folder (CIFS), E-mail (with LDAP support), FTP, TWAIN, WIA, HTTP, USB memory, Application with Actkey software	Scan to folder, E-mail (with LDAP support), network folder, FTP/CIFS server, and fax; TWAIN, WIA, HTTP	Scan to folder (CIFS), E-mail (with LDAP support), FTP, TWAIN, WIA, HTTP, USB memory, Application with Actkey software
File Formats Supported	PDF, Secure PDF, TIFF, JPEG, XPS	PDF, Secure PDF, TIFF, JPEG, XPS	PDF, JPEG, TIFF	PDF, Secure PDF, TIFF, JPEG, XPS
Fax				
Standard	N/A	33.6 Kbps Super G3	33.6 Kbps Super G3	33.6 Kbps Super G3
Paper Handling				
Standard Paper Input	250 sheets + 1-sheet manual tray	250 sheets + 100-sheet MPF	530 sheets + 50-sheet MPF	250 sheets + 100-sheet MPF
Maximum Paper Input	780 sheets, 1 envelope	880 sheets, 10 envelopes	1,110 sheets, 10 envelopes	880 sheets, 10 envelopes
Finishing Capabilities	N/A	N/A	N/A	N/A
Environmental				
Operator Panel	3.5" backlit LCD display; Alphanumeric keypad	3.5" backlit LCD display; 1-Touch Function buttons; Full QWERTY keyboard; Alphanumeric keypad	2.5" backlit LCD display; Alphanumeric keypad; 1-Touch Function buttons	3.5" backlit LCD display; 1-Touch Function buttons; Full QWERTY keyboard; Alphanumeric keypad
MFP Size (WxDxH)	16.8" x 16.7" x 17.9" (427mm x 425mm x 455mm)	16.8" x 16.7" x 17.9" (427mm x 425mm x 455mm)	17.6" x 17.0" x 20.8" (447mm x 432mm x 529mm)	16.8" x 16.7" x 17.9" (427mm x 425mm x 455mm)
MFP Weight (Approx.)	44.1 lb. (20 kg) ⁴	44.1 lb. (20 kg) ⁴	41.9 lb. (19 kg)	44.1 lb. (20 kg) ⁴
Warranty/Support				
System Warranty	1-Year limited On-Site ²	1-Year limited On-Site ²	1-Year limited On-Site ²	1-Year limited On-Site ²
Support	Live, toll-free 24/7/365 ²	Live, toll-free 24/7/365 ²	Live, toll-free 24/7/365 ²	Live, toll-free 24/7/365 ²

¹ Published performance results based on laboratory testing. Individual results may vary.

² Available in the U.S. and Canada only.
³ Based on ITU-T Test Chart #1.

⁴ Including all consumables.



MB491+LP MFP		MB760	MB770/MB770f/MB770fx
4-in-1		4-in-1	4-in-1
Up to 47 ppm ¹		Up to 49 ppm, 40 ipm duplex ¹	Up to 55 ppm, 42 ipm duplex ¹
As fast as 5 seconds ¹		As fast as 5 seconds ¹	As fast as 5 seconds ¹
Up to 1200 x 1200 dpi		Up to 1200 x 1200 dpi	Up to 1200 x 1200 dpi
10/100 Base-TX Ethernet; USB 2.0 (Device and Host)		1 Gigabit Ethernet (10/100/1000 Base-TX); High-speed USB; USB Host (x2)	1 Gigabit Ethernet (10/100/1000 Base-TX); High-speed USB; USB Host (x2)
Standard		Standard	Standard
Up to 80,000 pages		Up to 250,000 pages	Up to 280,000 pages
750 – 6,000 pages		2,000 – 25,000 pages	4,000 – 30,000 pages
Up to 47 cpm ¹		Up to 49 cpm ¹	Up to 55 cpm ¹
As fast as 10 seconds ¹		As fast as 8 seconds ¹	As fast as 8 seconds ¹
Up to 50-sheet Duplexing/Reversing ADF		Up to 100-sheet Duplexing/Reversing ADF	Up to 100-sheet Duplexing/Reversing ADF
99 copies		999 copies	999 copies
Legal		Legal	Legal
Up to 600 dpi		Up to 600 dpi	Up to 600 dpi
Scan to folder (CIFS), E-mail (with LDAP support), FTP, TWAIN, WIA, HTTP, USB memory, Application with Actkey software		Scan to filing box, Shared folder, E-mail, USB memory stick, WSD scan	Scan to filing box, Shared folder, E-mail, USB memory stick, WSD scan
PDF, Secure PDF, TIFF, JPEG, XPS		TIFF, JPEG, PDF, Slim PDF, Secure PDF, XPS	TIFF, JPEG, PDF, Slim PDF, Secure PDF, XPS
33.6 Kbps Super G3		33.6 Kbps Super G3	33.6 Kbps Super G3
250 sheets + 100-sheet MPF		530 sheets + 100-sheet MPF	MB770: 630 sheets; MB770f: 1,160 sheets; MB770fx: 2,630 sheets
880 sheets, 10 envelopes		3,160 sheets	MB770: 3,160 sheets; MB770f: 1,690 sheets; MB770fx: 3,160 sheets
N/A		N/A	MB770: 20-sheet off-line stapler; MB770f/MB770fx: 50-sheet inline stapler
3.5" backlit LCD display; 1-Touch Function buttons; Full QWERTY keyboard; Alphanumeric keypad		9" color graphic touch-screen display; Alphanumeric keypad; Function buttons	9" color graphic touch-screen display; Alphanumeric keypad; Function buttons
19.1" x 16.7" x 17.9" (486mm x 425mm x 455mm)		20.6" x 23.8" x 26.6" (522mm x 604mm x 675mm)	MB770: 20.6" x 23.8" x 26.6" (522mm x 604mm x 675mm) MB770f: 20.6" x 23.8" x 42.5" (522mm x 604mm x 1,079mm) MB770fx: 20.6" x 23.8" x 47.8" (522mm x 604mm x 1,215mm)
44.7 lb. (20.6 kg) ⁴		105.8 lb. (48 kg)	MB770: 105.8 lb. (48 kg); MB770f: 176.4 lb. (80 kg); MB770fx: 172.4 lb. (78.2 kg)
1-Year limited On-Site ²		1-Year limited On-Site ²	1-Year limited On-Site ²
Live, toll-free 24/7/365 ²		Live, toll-free 24/7/365 ²	Live, toll-free 24/7/365 ²



THERMAL LABEL PRINTERS



Portable		Desktop	
LP441, LP470/480 Series		LD610 Series	LD630/LD640 Series
Technology			
Print Method	Direct Thermal (battery included)	Direct Thermal/Thermal Transfer (TT) or Direct Thermal (DT) only	Direct Thermal (LD630D/LD640D); Thermal Transfer/Direct Thermal (LD630T/LD640T)
Resolution	LP441/LP470: 203 dpi (8 dots per mm); LP480: 305 dpi (12 dots/mm)	Up to 203 dpi (8 dot/mm)	LD630D/LD630T: 203 dpi; LD640D/LD640T: 300 dpi
Sensing	Reflective sensor for use with pre-printed marks; Transmissive sensor for die-cut label with gap; Dispenser sensor	Transmissive sensor for label gap; Reflective sensor for black mark	Gap; Black Mark & Notch; Cover Open
Interfaces			
Standard	All models: RS232-C Serial; IrDA (v1.2 – Standard Protocol, IrCOMM); LP470/LP480 only: USB v2.0 Optional: Bluetooth® v1.1; 802.11 b/g Wireless LAN	USB + IEEE 1284 Parallel; USB + RS232-C Serial; USB + 10/100 Base-T Ethernet	USB 2.0 + RS232-C (Serial) + IEEE 1284 (Parallel); USB 2.0 + RS232-C (Serial) + Ethernet (LAN)
Compatibility			
Operating Systems	Microsoft® Windows® Vista®, XP, Server 2003, 2000	Windows 7, Vista, XP, Server 2008, 2003	Windows; Z Driver (Zoom); Linux CUPS (LD630T/LD640T only)
Fonts and Graphics			
Bitmap Fonts	All models: XB, XL, XM, XS, XU, POP, OCR-A and OCR-B LP470/LP480 only: Scalable CG Triumvirate® and CG Times®	XU, XS, XM, XB, XL, OCR-A (15x22, 22x33), OCR-B (20x24, 30x36), CG Times, CG Triumvirate	23 Code pages included in standard firmware; 10 Resident bitmap fonts; Built-in vector font; Unicode supported (UTF-8, UTF-16LE, UTF-16BE)
Barcodes	Linear: EAN-8/13, UPC-A/E, UCC/EAN-128, Interleaved 2 of 5, Code 39, Code 128, Code 93, RSS-14, PostNet®, NW-7 2-Dimensional: Data Matrix, PDF417, MaxiCode, Composite Symbolology, QR Code	Linear: UPC-A/E, JAN/EAN, Code 39, Code 93, Code 128, GS1-128 (UCC/EAN-128), NW-7 (CodaBar), ITF, Industrial 2 of 5, Matrix 2 of 5, Bookland, MSI, PostNet, GS1 DataBar (RSS) barcode	Linear 1-D: EAN-8, EAN-13, Code39, Code93, Code128, Code128 with subsets A/B/C/Auto, 1 of 5, ITF, CodaBar, UPC-A, UPC-E, IMB, Code 11, Code 49, Planet, Plessey, PostNet, Logmars, TLC39 2-Dimensional: DataMatrix, MaxiCode, PDF417, QR Code, Aztec, Micro PDF417
Formatting	360° rotation (0°, 90°, 180°, 270°)	N/A	N/A
Graphic Support	N/A	N/A	N/A
Media Handling			
Print Speeds	Max. up to 4 ips (103mm/sec) at 16% printing coverage; default print speed – 3 ips (75mm/sec) ¹	Max 4 ips (100mm/sec) ³	LD630D: Up to 6.5 ips max.; LD640D: Up to 4 ips max. LD630T: Up to 6 ips max.; LD640T: Up to 4 ips max.
Media Types	Roll die-cut label with gap or pre-printed label; Coreless/linerless media	Roll-fed or fan-fold (face-in, face-out)	Roll-fed
Environmental			
Size (WxDxH)	LP441: 3.5" x 5.03" x 2.9" (88mm x 128mm x 73mm) LP470/LP480: 6.7" x 3.0" x 5.3" (170mm x 76mm x 134mm)	7.04" x 9.37" x 6.81" (179mm x 238mm x 173mm)	LD630D/LD640D: 7.63" x 9.56" x 7.08" (194mm x 243mm x 180mm); LD630T/LD640T: 8.43" x 12.2" x 7.87" (214mm x 310mm x 200mm)
Weight (Approx.)	LP441: 0.9 lb. (405 g); LP470/LP480: 1.65 lb. (750 g)	TT: 4.2 lb. (1.9 Kg); DT: 3.75 lb. (1.7 Kg)	LD630D/LD640D: 4.85 lb. (2.2kg); LD630T/LD640T: 6.17 lb. (2.8kg)
Warranties			
Printer	1-Year limited with Advanced Overnight Exchange ²	2-Year limited with Advanced Overnight Exchange ²	2-Year limited with Advanced Overnight Exchange ²
Printheads	600,000 inches	DT: 600,000 inches; TT: 1.2 million inches	984,000 inches

¹ Published performance results based on laboratory testing. Individual results may vary.

² Available in the U.S. and Canada only.



Enterprise		
LD670	LE810nr	LE840/LE850
Direct Thermal	Direct Thermal	Direct Thermal (LE840D/LE850D); Thermal Transfer/Direct Thermal (LE840T/LE850T)
203 dpi (8 dots/mm)	203 dpi (8 dots/mm)	LE840D/LE840T: 203 dpi; LE850D/LE850T: 300 dpi
Paper near end; Paper end; Reflective (Black mark); Transmissive (Die-cut label and notch)	Adjustable reflective Black Mark; Adjustable gap; Media out; Cover open	All models: Gap/Black mark, Head-up sensor; LE840T/LE850T only: Ribbon rotation, Ribbon end
Choice of RS232-C Serial + Full-speed USB 2.0 or 10 Base-T/100 Base-TX (RJ-45) Ethernet	10/100 Base-T Ethernet LAN only; IEEE 1284 Parallel only; USB 2.0 only; and Parallel/USB/RS232-C Serial combination	USB 2.0 + RS232-C (Serial) + IEEE 1284 (Parallel); USB 2.0 + Ethernet (LAN); USB 2.0
Windows 7, Vista, XP, 2000, Server 2008, Server 2008 R2, Server 2003; OPOS (v1.10)	Windows XP 32/64 Bit, Vista 32/64 Bit	TCPL, Z-Mode (ZPL II® compatible)
1-bit: ANK, International Character, Enlarged Graphics, Download Character; 2-bit: JIS1 & 2 Kanji, JISX0208-1990, User-Defined Character, Special Characters	U, S, M, WB, XS, XU, XM, XB, XL, OUTLINE, OCR-A, OCR-B, WL; Scalable CG Triumvirate and CG Times	21 Resident bit map fonts including OCR-A and OCR-B; 1-bit and 2-bit download character support; 16 Code pages
Linear: UPC-A, UPC-E, EAN-8, EAN-13, CODE39, Interleaved 2 of 5, CodaBar (NW-7), Code 93, Code 128, GS1-DataBar (RSS), EAN-128/GS1-128 2-Dimensional: PDF 417, DataMatrix, MaxiCode, QR Code	Linear: UPC-A/E, JAN-8/13, EAN-8/13, Code 39, Code 128, Code 93, Interleaved 2 of 5, Industrial 2 of 5, Matrix 2 of 5, Bookland NW-7, MSI, PostNet, UCC/EAN-128, NW-7 (CodaBar) 2-Dimensional: QR Code, Data Matrix, MaxiCode, PDF417, Synthetic Symbol	Linear: JAN-8, JAN-13, EAN-8, EAN-13, UPC-EAN Extensions, Inter-leaved 2 of 5, NW-7, CODE39, CODE93, CODE128, UCC/EAN-128, MSI, GS1 DataBar, PostNet, RM4SCC, KIX Code, Industrial 2 of 5, Standard 2 of 5, USPS Intelligent Mail Barcode (Z-Mode only) 2-Dimensional: QR Code, Micro QR Code, PDF417, DataMatrix, Maxi Code, Micro PDF, CP Code
N/A	Expansion up to 12x in either the X or Y coordinates; Character Pitch Control, Line Space Control, Journal Print Facility; 360° rotation (0°, 90°, 180°, 270°)	N/A
384 KB storage	.PCX and .BMP formats	N/A
1 color: up to 69 lps (260mm/sec); 2 color: up to 30 lps (115mm/sec) ¹	Selectable –2, 3, 4, 5, 6 ips (50.8mm/sec to 152.4mm/sec) ¹	Up to 12 lps max. (304mm/sec.) ¹
Roll-fed or fan-fold; Die-cut or continuous direct thermal labels, tickets and tag stock with or without black mark, gap or notch	Roll-fed or fan-fold; Die-cut or continuous direct thermal labels, synthetics and tag stock with or without black mark, gap or notch	Labels, Tags
5.03" x 8.15" x 5.70" (128mm x 207mm x 145mm)	10.7" x 16.9" x 12.7" (271mm x 428mm x 322mm)	10.9" x 18.11" x 12.2" (278mm x 460mm x 310mm)
4.18 lb. (1.9 kg)	32.6 lb. (14.8 kg)	Approx. 36.7 lb. (17 kg)
2-Year limited with Advanced Overnight Exchange ²	2-Year limited with Advanced Overnight Exchange ²	2-Year limited Advanced Overnight Exchange ²
1-color: 5.9 million inches; 2-color: 3 million inches	600,000 inches	Direct Thermal: 600,000 inches; Thermal Transfer: 1.2 million inches



POINT-OF-SALE PRINTERS

**RT322****OKIPOS® 407II****OKIPOS® 441/441J**

Technology			
Print Method	Direct Thermal (power supply included)	Direct Thermal (power supply included)	9-Pin Dot Matrix (power plug included)
Print Speed	Up to 6 ips (150mm/sec) ¹	Up to 9.8 ips (250mm/sec) ¹	4.7 lines per second (250mm/sec) ¹
Printing Width	Max 3.15" (80mm), 2.28" (58mm)	3.24" (82.5mm), 3.15" (80mm), 2.28" (58mm)	2.99" (76mm), 2.75" (70mm), 2.28" (58mm)
Dot Density	203 dpi (8 dots per mm)	203 dpi (8 dots/mm)	7 x 9 (half dot); 5 x 9 dots
Interfaces			
Selectable	25-Pin Serial; Parallel; USB v2.0; Powered USB; Ethernet ²	25-Pin Serial; Parallel; USB; Powered USB; Ethernet ²	25-Pin Serial; Parallel; USB; Ethernet ²
Compatibility			
Operating Systems	Windows® 7, Vista® (32-/64-bit), XP (32-bit), 2000/Server (32-bit)	Windows 7, Vista (32 bit), XP (32 bit), 2000	Windows Vista, XP, Server 2003, 2000
Emulation	Star® Mode and ESC/POS®	Star Mode and ESC/POS	Star Mode and ESC/POS
Options			
Accessories	Vertical stand, buzzer, splash proof cover, DC power supply	Vertical stand, buzzer, splash proof cover, DC power supply	Vertical stand, wall bracket, buzzer
Fonts and Graphics			
2D Bar Code	9 versions; PDF417 option	PDF417 – QR code	N/A
Character Set	95 Alphanumeric; International 32; 128 Graphic	95 Alphanumeric; International 46 (Star Mode)/37 (ESC/POS)	95 Alphanumeric; International 46 (Star Mode)/37 (ESC/POS)
Column Capacity	48 or 64 columns	53 columns	42 or 35 columns
Media Handling			
Media Width	3.15" (80mm standard), 2.28" (58mm paper guide) ³	3.24 (82.5mm), 3.15" (80mm), 2.28" (58mm) ³	2.99" (76mm), 2.75" (70mm), 2.28" (58mm) ³
Media Roll Diameter	Max 3.15" (80mm) 2.28" (58mm)	Max 3.9" (100mm)	Max 3.35" (85mm)
Cutter	Tear bar; Optional auto partial cut (Centered)	Auto-cutter standard (full or partial)	Tear bar; Optional auto partial cut (centered)
Paper Loading	Drop-In	Drop-in	Drop-in roll (up to 3 ply)
Paper Sensor	Paper end, Near end	Paper end, Near end, Black mark	Paper end (near-end sensor, factory option)
Environmental			
Size (WxDxH)	5.59" x 7.95" x 5.19" (142mm x 202mm x 132mm)	5.78" x 8.38" x 5.79" (147mm x 213mm x 148mm)	OKIPOS 441: 6.3" x 9.65" x 5.98" (160mm x 245mm x 152mm); OKIPOS 441J: 6.3" x 11.34" x 7.2" (160mm x 288mm x 183mm)
Weight (Approx.)	Tear bar 3.44 lb. (1.56 kg); Auto Cutter 3.79 lb. (1.72 kg)	3.85 lb. (1.75 kg)	OKIPOS 441 Tear Bar: 6.61 lb. (3.0 kg); Auto Cutter – 7.05 lb. (3.2 kg) OKIPOS 441J Tear Bar: 7.72 lb. (3.5 kg); Auto Cutter – 8.16 lb. (3.7 kg)
Reliability			
Printhead	60 million lines	60 million lines	150 million characters
Cutter	1 million cuts	2 million cuts	1 million cuts
Warranties			
Printer	2-Year limited with Advanced Overnight Exchange ⁴	2-Year limited with Advanced Overnight Exchange ⁴	2-Year limited with Advanced Overnight Exchange ⁴

¹ Published performance results based on laboratory testing. Individual results may vary.

² I/F must be selected at time of purchase. May be changed later, with options.
³ +/- 0.02" (0.5mm).

⁴ Available in the U.S. and Canada only.



PT330/PT331	PT390	PH640 Series
Receipt/Slip-Endorsement/Validation Printer with MICR Reader		
Direct Thermal	Direct Thermal	Hybrid: Direct Thermal/9-Pin Dot Matrix
Up to ips (220mm/sec) ¹	1 color: Up to 114 lps (300mm/sec) ¹ ; 2 color: Up to 30 lps (115mm/sec) ¹	Direct Thermal – up to 9.8 ips (250mm/sec.); Dot Matrix – 4.82 lps ¹
58mm: 48mm (384 dots) or 52.5mm (420 dots); 80mm: 64mm (512 dots) or 72mm (576 dots)	58mm (48mm/384 dots or 52.5mm/420 dots); 60mm (54.5mm/436 dots); 80mm (64mm/512 dots or 72mm/576 dots); 83mm (80mm/640 dots)	Direct Thermal (Receipts) – 72mm max; Dot Matrix (Slips/Validations) – 85.4mm max
N/A	N/A	Direct Thermal (selectable) – up to 203 x 406 dpi (8 x 16 d/mm)
Choice of RS232C Serial + Full-speed USB 2.0 or 10 Base-T/100 Base-TX (RJ-45) Ethernet	Choice of RS232C Serial + Full-speed USB 2.0;Centronics IEEE-1284 Nibble Mode-Compliant Parallel; or 10 Base-T/100 Base-TX (RJ-45) Ethernet	Models available in 25-Pin Serial, Parallel, USB v2.0 or Ethernet configuration ²
Windows® Embedded for Point of Service, Windows 7, Vista®, XP, 2000, Server 2008, Server 2008 R2, Server 2003; OPOS (v1.13); JavaPOS™ (v1.10) for Windows	Windows® 7, Vista®, XP, 2000, Server 2008, Server 2008 R2, Server 2003; JavaPOS™ (v1.10); OPOS (v1.10)	Windows XP (32-bit), 2000 (32-bit)
Epson® ESC/POS®	Epson® ESC/POS®	ESC/POS; Star Line Mode
Splash-proof cover; Wall-mount bracket (PT330 only)	N/A	DC power supply
QR code	PDF 417, DataMatrix, QR Code	PDF 417
ANK, International Character, Enlarged Graphics, Download Character	1-bit: ANK, International Character, Enlarged Graphics, Download Character; 2-bit: JIS1 & 2 Kanji, JISX0208-1990, User-Defined Character, Special Characters	MICR: E13B, CMC-7
N/A	N/A	SIDM (Slips/Validations): 45 or 60 columns
2.28" (58mm), 3.15" (80mm)	2.28" (58mm), 2.36" (60mm), 3.15" (80mm), 3.26" (83mm)	Direct Thermal – 3.15" (80mm standard); SIDM – up to 9" (230mm) ³
Max. 83mm	Max. 102mm	Max. 3.27" (83mm)
Partial cut	Partial cut	Guillotine (full cut)
Drop-in	Drop-in	Drop-in roll, Slip printing (up to 1 + 3 ply)
Paper near end; Paper end	Paper near end; Paper end	Paper low, Paper out
PT330: 4.72" x 5.66" x 7.24" (120mm x 144mm x 184mm) PT331: 6.49" x 5.66" x 7.24" (165mm x 144mm x 184mm)	5.03" x 8.15" x 5.70" (128mm x 207mm x 145mm)	7.3" x 11.65" x 7" (186mm x 260mm x 178mm)
PT330: 2.64 lb. (1.2 kg) PT331: 3.74 lb. (1.7 kg)	4.18 lb. (1.9 kg)	10 lb. (4.54 kg)
100,000 km	150,000 km (1 color); 75,000 km (2 color)	60 million lines
1.5 million cuts (partial cut)	2 million cuts at 0.075mm media thickness	1.5 million cuts
2-Year limited with Advanced Overnight Exchange ⁴	2-Year limited with Advanced Overnight Exchange ⁴	2-Year limited with Advanced Overnight Exchange ⁴



DOT MATRIX PRINTERS



9-Pin Printers

ML1120

ML186 Series:
Parallel and Serial

ML320/321 Turbo Series:
Turbo, Turbo/n, Turbo/D

ML420/421 Series

Performance				
Print Method	9-Pin	9-Pin	9-Pin	9-Pin
Print Speed:				
Near-Letter Quality	62.5 cps	62.5 cps	75 cps	95 cps
Utility	250 cps	250 cps	300 cps	380 cps
High-Speed Draft	333 cps	333 cps	390 cps	510 cps
Super-Speed Draft	375 cps	375 cps	435 cps	570 cps
Memory	64K RAM	128K RAM	64K RAM	128K RAM
Compatibility				
Emulations	Epson FX, IBM ProPrinter, MICROLINE	IBM® 2480, Epson® ESC/P and OKI® MICROLINE®	Turbo and Turbo/n: Epson FX, IBM ProPrinter III, MICROLINE; Turbo/D: IBM ProPrinter®, DEC ANSI x 3.64	Epson FX, IBM ProPrinter, OKI MICROLINE
Interfaces	Standard – IEEE 1284 Bi-directional Parallel, USB 2.0 and RS232-C Serial Optional – Ethernet via OkilAN 6020e+10/100 Base-T External Print Server	Standard – Parallel; USB Optional – Ethernet via OkilAN® (10/100 Base-T); Serial	Standard – Parallel; USB; OkilAN 10/100 Base-T Internal Print Server (ML320T/n, ML321T/n) Optional – OkilAN Internal or External Print Server (10/100 Base-T); Serial	Standard – Parallel; USB; OkilAN 10/100 Base-T Internal Print Server (ML420/n, ML421/n) Optional – OkilAN Internal or External Print Server (10/100 Base-T); Serial
Barcodes	11 including PostNet	8 including PostNet® (Epson/IBM only)	8 including PostNet (Epson/IBM only)	8 including PostNet (Epson/IBM only)
Paper Handling				
Paper Input	Single-/multi-part, continuous forms, cut sheet, envelopes, card stock, labels	Single-/multi-part, continuous, envelopes, index stock, labels, receipts, reports	Single-/multi-part, continuous, envelopes, index stock, labels, receipts, reports	Single-/multi-part, continuous, envelopes, index stock, labels, receipts, reports
No. Copies/Thickness (Max)	5 copies/0.014" (0.39mm)	4 copies Rear Feed; 5 copies Bottom Feed/0.011" (0.28mm)	6 copies/0.017" (0.43mm); expandable to 0.031" (0.78mm) ³	6 copies/0.017" (0.43mm)
Reliability				
MTBF	10,000 hours ¹	20,000 hours ¹	10,000 hours ¹	20,000 hours ¹
Monthly Duty Cycle	18,000 pages ¹	13,000 pages ¹	ML320T Series: 20,000 pages ¹ ML321T Series: 13,000 pages ¹	ML420: 24,000 pages ¹ ML421: 17,000 pages ¹
Printhead Life	400 million strokes per wire	200 million characters	200 million characters	400 million characters
Consumables				
Ribbon	4 million-character life	Black Ribbon – 3 million-character life	Black Ribbon – 3 million-character life	Black Ribbon – 4 million-character life
Warranty & Support				
Warranty	2-Year parts/labor/printhead ²	3-Year parts/labor/printhead ²	1-Year parts/labor/printhead ²	3-Year parts/labor/printhead ²
Support	Live, toll-free 24/7/365 ²	Live, toll-free 24/7/365 ²	Live, toll-free 24/7/365 ²	Live, toll-free 24/7/365 ²

¹ 25% duty cycle, 35% page density.

² Available in the U.S. and Canada only.

³ Requires optional Push or Pull Tractor.

⁴ Color ribbon for ML395C only.



24-Pin Printers					High-Speed Printers		
ML620/621	ML390/391 Turbo Series: Turbo, Turbo/n	ML490/491 Series	ML690/691	ML395/395C Series	PACEMARK® 3410	ML8810 Series: ML8810, ML8810n	PACEMARK® 4410 Series: PM4410, PM4410n
9-Pin	24-Pin	24-Pin	24-Pin	24-Pin	9-Pin	18-Pin (Dual 9-Pin)	18-Pin (Dual 9-Pin, diamond array)
113 cps	105 cps	126 cps	120 cps	165 cps	105 cps	150 cps	300 lines per minute (lpm)
450 cps	315 cps	380 cps	360 cps	245 cps	420 cps	600 cps	200 cps
600 cps	390 cps	420 cps	480 cps	485 cps	550 cps	720 cps	800 cps
700 cps	N/A	475 cps	N/A	610 cps	N/A	810 cps	1,066 cps
128K RAM	64K RAM	128K RAM	128K RAM	64K RAM	64K RAM	256K RAM	N/A
512K RAM							512K RAM
Epson ESC/P, IBM PPDS, MICROLINE	Epson ESC/P2; IBM ProPrinter; IBM AGM and MICROLINE co-resident	Epson LQ, IBM ProPrinter, IBM AGM, IBM XL24, MICROLINE	Epson LQ/ESC/P2, IBM PPDS, IBM AGM	Epson LQ 2550/IBM XL 24e	Epson FX-1050; IBM ProPrinter III; MICROLINE and PACEMARK (optional)	IBM ProPrinter III, Epson FX-1050, MICROLINE	Epson FX, IBM ProPrinter III
Standard – IEEE Bi-directional Parallel, USB 2.0	Standard – Parallel; USB; OkiLAN 10/100 Base-T Internal Print Server (ML390T/n, ML391T/n)	Standard – Parallel; USB; OkiLAN 10/100 Base-T Internal Print Server (ML490/n, ML491/n)	Standard – IEEE Bi-directional Parallel, USB 2.0	Standard – Parallel; Serial	Standard – Parallel; Serial	Standard – HS-USB; Parallel; OkiLAN 10/100 Base-T Internal Ethernet Print Server (ML8810n)	Standard – Parallel; Serial; OkiLAN 10/100 Base-T Internal Print Server (PM4410n)
Optional – Ethernet via OkiLAN 6130 10/100 Base-T External Print Server; RS232-C Serial	Optional – OkiLAN Internal or External Print Server (10/100 Base-T); Serial	Optional – OkiLAN Internal or External Print Servers (10/100 Base-T); Serial	Optional – Ethernet via OkiLAN 6130 10/100 Base-T External Print Server; RS232-C Serial	Optional – OkiLAN External Print Server (10/100 Base-T)	Optional – OkiLAN External Print Server (10/100 Base-T)	Optional – OkiLAN Internal Print Server (10/100 Base-T); Serial	Optional – OkiLAN Internal or External Print Server (10/100 Base-T)
13 including PostNet	8 including PostNet	8 including PostNet (Epson/IBM only)	13 including PostNet	8 including PostNet	8 including PostNet	8 including PostNet	8 including PostNet
Single-/multi-part, continuous, cut sheet, roll paper [‡] , envelopes, card stock, labels	Single-/multi-part, continuous, envelopes, index stock, labels, receipts, reports	Single-/multi-part, continuous, envelopes, index stock, labels, receipts, reports	Single-/multi-part, continuous, cut sheet, roll paper [‡] , envelopes, card stock, labels	Single-/multi-part, continuous, envelopes, index stock, labels, receipts, reports	Single-/multi-part, continuous, cut sheet, envelopes, index stock, labels, reports, invoices	Single-/multi-part, continuous, cut sheet, envelopes, index stock, labels, reports	Continuous: single-/multi-part, index stock, envelopes, labels, reports
Original + 6 copies/0.017" (0.44mm) front/rear path; 0.019" (0.48mm) bottom pull	4 copies/0.017" (0.43mm); expandable to 0.031" (0.78mm) [‡]	5 copies/0.017" (0.43mm)	Original + 6 copies/0.017" (0.44mm) front/rear path; 0.019" (0.48mm) bottom pull	4 copies/up to 0.02" (0.5mm)	8 copies/0.02" (0.5mm)	8 copies/0.019" (0.48mm)	10 copies/0.031" (0.78mm)
25,000 hours [‡]	10,000 hours [‡]	20,000 hours [‡]	25,000 hours [‡]	8,000 hours [‡]	8,000 hours [‡]	10,000 hours [‡]	15,000 hours [‡]
ML620: 28,000 pages [‡] ML621: 20,000 pages [‡]	ML390T: 18,000 pages [‡] ML391T: 12,000 pages [‡]	ML490: 20,000 pages [‡] ML491: 12,000 pages [‡]	ML690: 23,000 pages [‡] ML691: 14,000 pages [‡]	17,000 pages [‡]	19,000 pages [‡]	24,000 pages [‡]	35,000 pages [‡]
400 million characters	200 million characters	400 million characters	400 million characters	200 million characters	200 million characters	400 million characters	400 million characters
Black Ribbon – ML620: 8 million-character life; ML621: 13 million-character life	Black Ribbon – 2 million-character life	Black Ribbon – 4 million-character life	Black Ribbon – ML690: 8 million-character life; ML691: 13 million-character life	Black Ribbon – 5 million-character life; Color Ribbon – 7.8 million-character life (all bands) [‡]	Black Ribbon – 7.5 million-character life	Black Ribbon – 10 million-character life	Black Ribbon – 15 million-character life
3-Year parts/labor/printhead [‡]	1-Year parts/labor/printhead [‡]	3-Year parts/labor/printhead [‡]	3-Year parts/labor/printhead [‡]	1-Year parts/labor/printhead [‡]	1-Year On-Site, parts/labor/printhead [‡]	1-Year Overnight Exchange [‡]	2-Year On-Site, parts/labor/printhead [‡]
Live, toll-free 24/7/365 [‡]	Live, toll-free 24/7/365 [‡]	Live, toll-free 24/7/365 [‡]	Live, toll-free 24/7/365 [‡]	Live, toll-free 24/7/365 [‡]	Live, toll-free 24/7/365 [‡]	Live, toll-free 24/7/365 [‡]	Live, toll-free 24/7/365 [‡]

[‡] ML620/690 only.



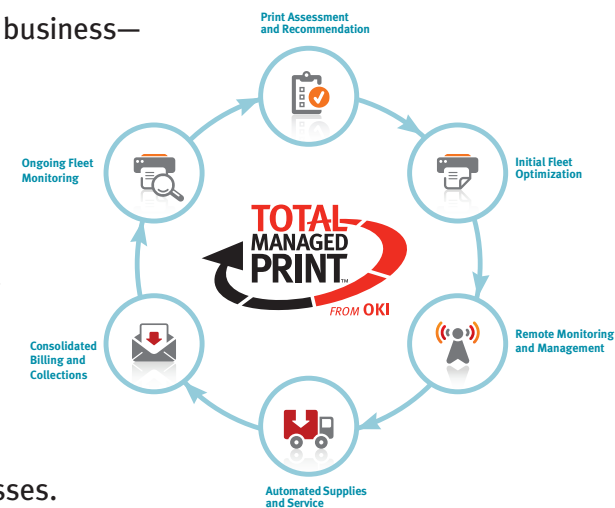
Expect More SOLUTIONS

Total Managed Print™

Total Managed Print from OKI is a scalable, end-to-end Managed Print solution that's designed to significantly reduce the costs of document output and management, as well as increase your company's workflow efficiencies.

With its modular platform, TMP can be leveraged to support any size business—from a small office to an enterprise environment—and individual components can be utilized as stand-alone modules. It streamlines business processes, removing the burden of printer ownership through continuous optimization. The six-stage process of Total Managed Print includes (clockwise from top) **Print Assessment and Recommendation**, **Initial Fleet Optimization**, **Remote Monitoring and Management**, **Automated Supplies and Service** fulfillment, **Consolidated Billing and Collections**, and **Ongoing Fleet Monitoring** for continuous improvement.

Total Managed Print will equip you to transform your business processes. It goes beyond asset management and hardware replacement to deliver a long-term business strategy customized to support the individual needs of your organization and its many users.



The six-stage Total Managed Print™ process

Meeting the ever-changing needs of business requires innovative technology. At OKI, this goes hand-in-hand with environmental awareness.

We take a holistic approach to green issues when new products are developed: the environmental considerations are automatically integrated into the design, engineering and post-sales care of the product and its consumables.

Among the eco-friendly features that can be found in many OKI products:

Feature	Benefit to the Environment
LED Technology	Long printhead life with high energy efficiency
ENERGY STAR® Compliance	Superior energy efficiency
Duplex (2-sided) Printing	Savings in energy and resources
Automatic ECO Mode	Lowers power consumption; saves energy
Deep-Sleep Mode	Lowest power consumption ($\geq 1W$) ¹
Toner Save Mode	Reduced consumables use and waste
Auto Power Off	Saves power during periods of non-use
Individual Color Toner Cartridges	Longer image drum life
1-Piece Image Drum²	Reduced use of disposable material
Accountability Software	Reduction in unnecessary printing

OKI's green leaf symbol is a reminder of the company's environmental efforts. The symbol can be found on our products and packaging.

¹ Applies to digital single-function printers only.

² Offered on select models.



One company devotes the resources to understand your needs and provide you with customized and strategic printing solutions that optimize productivity and performance: OKI. Our proactive approach to exceptional customer service and support helps us anticipate changing needs – including your company's "green" initiatives.

You can always expect more from OKI.

Award-Winning Excellence

Industry experts have taken notice of OKI's full line of product and service offerings that help businesses become more productive and communicate more effectively. Our long-standing commitment to technology leadership, product excellence and superior customer support is a winning combination.



© 2013 Oki Data Americas, Inc. OKI Reg. T.M., M.D., OKicare, OKIPOS, OKILAN, MICROLINE Reg. T.M., Oki Electric Industry Co., Ltd. Single Pass Color T.M., PACEMARK Reg. T.M., Oki Data Corp. iD Color design T.M., Total Managed Print T.M., Oki Data Americas, Inc. Adobe, PostScript, Acrobat Reg. T.M., Postscript 3 T.M., Adobe Systems Inc. Microsoft, Windows, Vista, Windows NT Reg. T.M., Microsoft Corp. PCL Reg. T.M., Hewlett Packard Co. Apple, Mac Reg. T.M., AirPrint T.M., Apple Inc. EPSON, ESC/POS Reg. T.M., Seiko Epson Corp. IBM, ProPrinter Reg. T.M., International Business Machines, Inc., ENERGY STAR Reg. T.M., U.S. EPA.

OKI DATA AMERICAS, INC.

USA

2000 BISHOPS GATE BLVD.
MOUNT LAUREL, NJ 08054-4620
TEL: 800.OKI.DATA (800.654.3282)
FAX: 856.222.5320

CANADA

4140B SLADEVIEW CRESCENT
UNITS 7 & 8
MISSISSAUGA, ONTARIO L5L 6A1
TEL: 905.608.5000
FAX: 905.608.5040

LATIN AMERICA

2000 BISHOPS GATE BLVD.
MOUNT LAUREL, NJ 08054-4620
TEL: 856.231.0002
FAX: 856.222.5071

OKI DATA DE MÉXICO, S.A. DE C.V.

MARIANO ESCOBEDO, 748 8º PISO
COL. NUEVA ANZURES C.P. 11590
MÉXICO, D.F.
TEL: 55.5263.8780
FAX: 55.5250.3501

OKI DATA DO BRASIL INFORMÁTICA LTDA.

AV. ALFREDO EGÍDIO DE SOUZA ARANHA, 100
BLOCO C – 4º ANDAR
04726-170 – SÃO PAULO – SP – BRASIL
TEL: 11.3444.3500
FAX: 11.3444.3502

WWW.OKIDATA.COM

OKI®