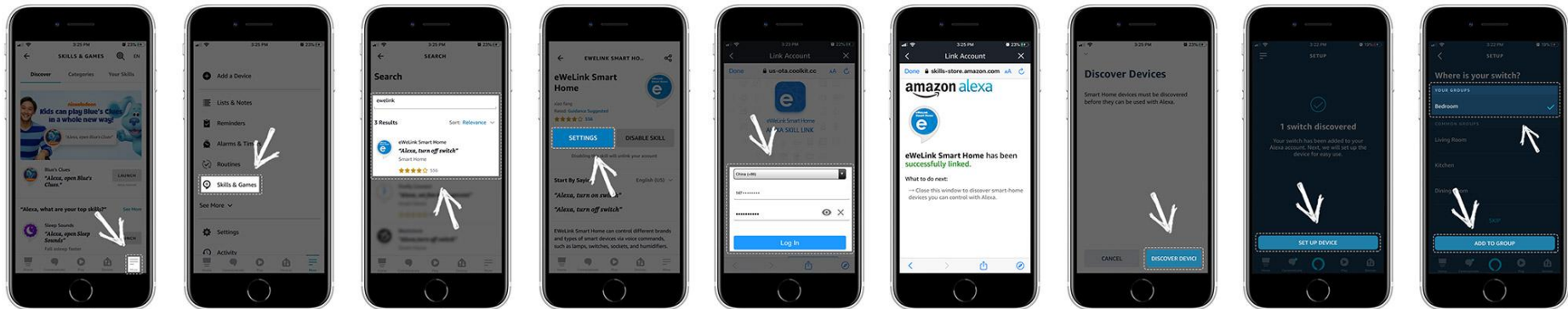


How to connect with Alexa by "eWelink Smart Home"



1. Tap menu button(three lines) on the topleft of Alexa app.
2. Select "Skill & Game " from the menu.
3. Enter "eWelink Smart Home" in the search bar and tap on it;
4. Tap "ENABLE TO USE";
5. Select your country/region, Enter your eWelink account and password, then tap "Log In",
6. Tap "Done" to close the page when you see "eWelink Smart Home has been successfully linked"
7. when 'eWelink Smart Home' is linked, Alexa App will prompt you whether to discover devices, tap "Discover Devices";
8. After discovering devices, select "SET UP DEVICE" to group or rename devices