

RAPID SET™ SYSTEM

INSTALLATION INSTRUCTIONS

Do not remove side wood stabilizers until anchored to concrete.



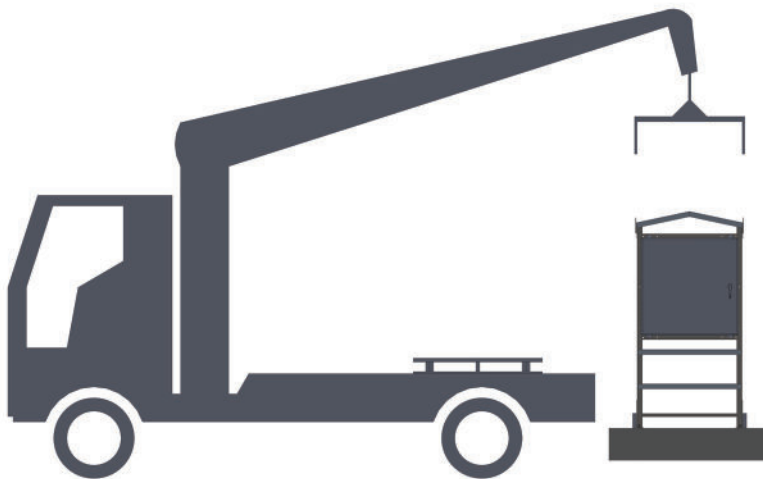
Attach rigging with spreader bar to lifting eyes

 **CAUTION**

**STAY CLEAR FROM
SUSPENDED LOAD**

LIFTING EYE CAPACITY: 700lbs combined max

Place Rapid Set on concrete pad.



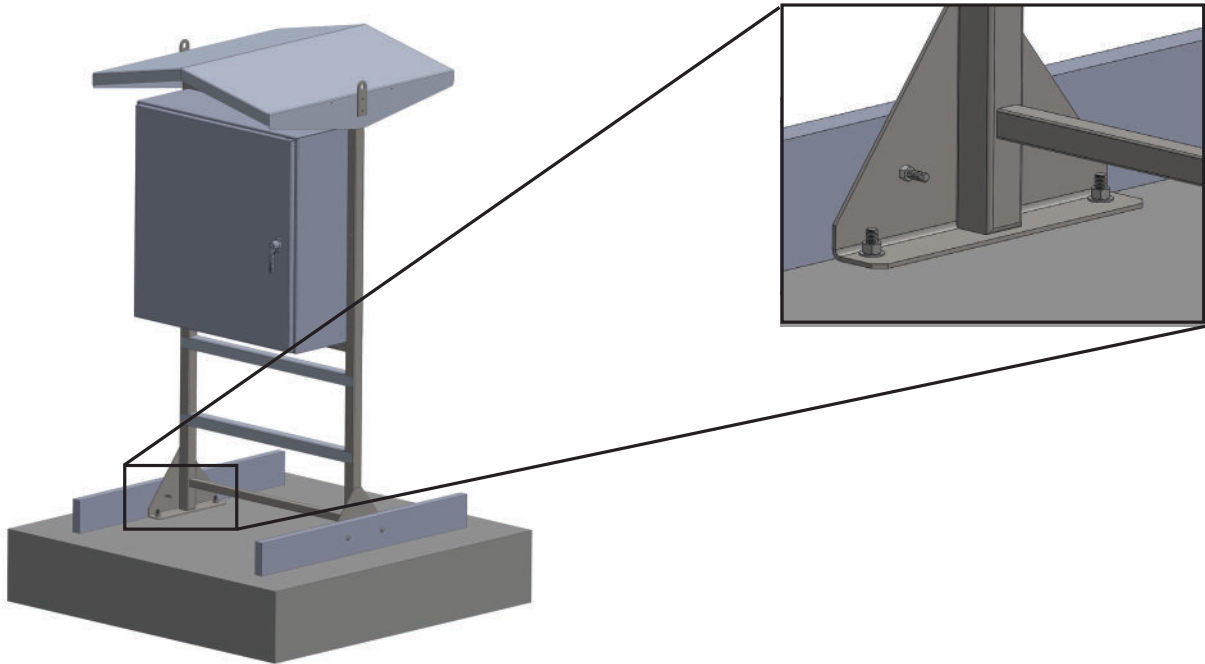
 **WARNING!**

Tip Over Hazard

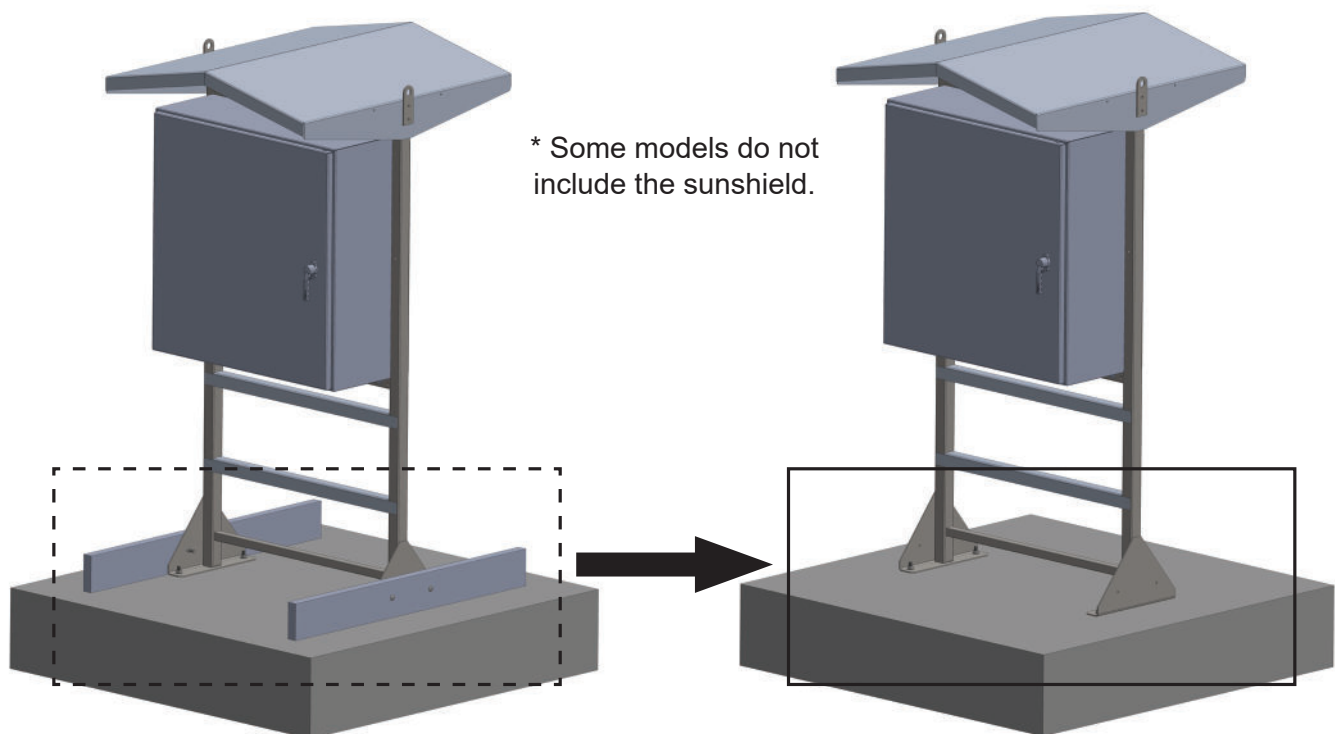
Anchor Rapid Set to the concrete pad

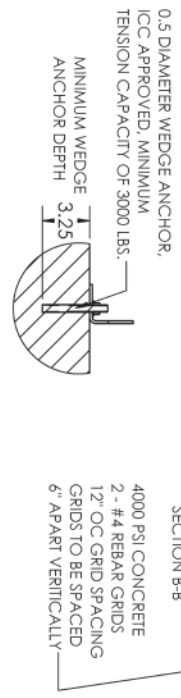
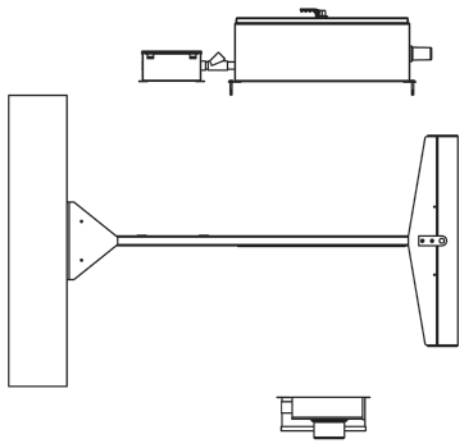
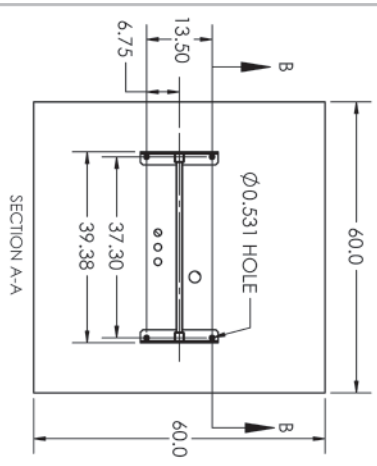
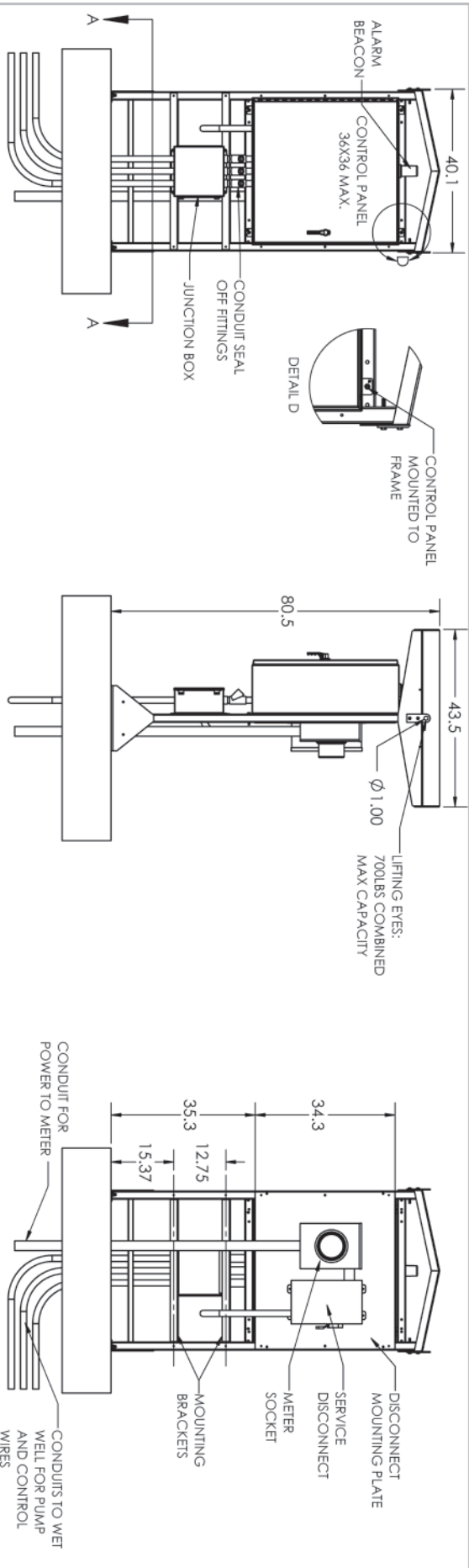
Only use specified anchor bolts, 4 bolts required

- 0.5 DIAMETER WEDGE ANCHOR, ICC APPROVED, MINIMUM TENSION CAPACITY OF 3000 LBS



Remove side wood stabilizers





UNLESS OTHERWISE SPECIFIED: DIMENSIONS ARE IN INCHES				NAME		DATE	
TOLERANCES:				DRAWN		XXXXXX	
ANGULAR: MACH - $\pm 2^\circ$				CHECKED			
BEND - $\pm 2^\circ$				ENG APPR.			
TWO PLACE DECIMAL - ± 0.01				MFG APPR.			
THREE PLACE DECIMAL - ± 0.003							
INTERPRET DIMENSIONAL TOLERANCING PER:				G.A.			
MATERIAL:				COMMENTS:			
FINISH:							
DO NOT SCALE DRAWING							

TITLE:				SIZE		DWG. NO.		REV	
RAPID SET V1-122				B				01	
SCALE: 1:1				WEIGHT:				SHEET 1 OF 1	

Manufactured by: SJE Inc.
Technical support: +1-800-746-6287
techsupport@sjeinc.com

www.csicontrols.com

www.primexcontrols.com

www.sjerhombus.com

© 2020 SJE, Inc. All Rights Reserved. PN 1067842C 11/24