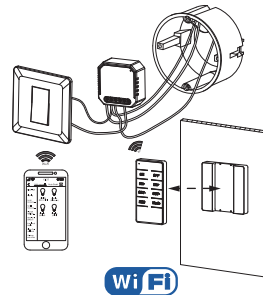


USER MANUAL

Wi-Fi Dimmer Module

QS-WIFI-D02-TRIAC (RF)



SPECIFICATIONS

Product type	WIFI dimmer module
Voltage	220-240V AC
Max. load	150W (LED)
WIFI Frequency	2.4GHz - 2.4835GHz
Operation temp.	-15°C - +40°C
Operation range	≤ 200 m
Dims (WxDxH)	46x46x18 mm
IP rating	IP20
Warranty	2 years
Dimming type	Trailing Edge

EMC Standard (EMC)
EN 300 328 V2.1.1 (2016-11),
EN 301489-1 V2.1.1 (2017-02),
EN 301489-17 V3.1.1 (2017-02),
EN 62311: 2008, EN 55015:2013
+A1:2015, EN 61547:2009

Safety Standard (LVD)
IEC 60669-2-1:2002/AMD1:2008/
AMD2:2015, IEC 60669-1:1998/
AMD1:1999/AMD2:2006,
EN 60669-2-1:2004+A1: 2009+ A2:2010,
EN 60669-1:2018

RoHS Standard (RoHS)
2011/65/EU, (EU) 2015/863

Radio Equipment (RED)
ETSI EN 300 328 V2.1.1 (2016-11)



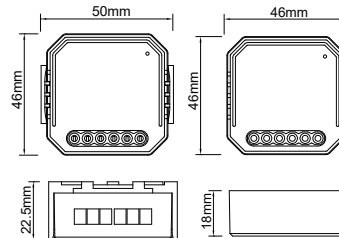
In-house local operation



INSTALLATION

Warnings:

1. Installation must be carried out by a qualified electrician in accordance with local regulations.
2. Keep the device out of reach of children.
3. Keep the device away from water, damp or hot environment.
4. Install the device away from strong signal sources such as microwave ovens that may cause signal interruption resulting in abnormal operation of the device.
5. Obstruction by concrete wall or metallic materials may reduce the effective operative range of the device and should be avoided.
6. Do NOT attempt to disassemble, repair or modify the device.



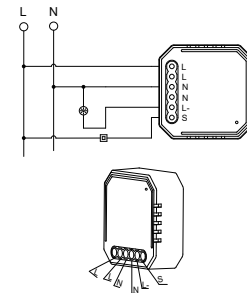
The dimmer module has a manual push-switch function to allow the user to switch on/off or adjust the light level.

- Short Push (<1s): permanent on/off function.
- Long Push (>1s): adjust the brightness level.

Notes:

- 1) Adjustments on App and push switch can overwrite each other, the last adjustment remains in memory.
- 2) App control is synchronized with manual switch.
- 3) The "S" terminals may be left unconnected if manual control is not required.

WIRING DIAGRAM



1. Turn off the power supply before carrying out any electrical installation work.
2. Connect wires according to the wiring diagram.
3. Insert the module into the junction box.
4. Turn on the power supply and follow dimmer module configuration instructions.

Notes: Keep your smartphone close to the switch module you're configuring, and make sure you have min. 50% Wi-Fi signal.

STEP 1: DOWNLOAD APP AND REGISTER

1. Download Tuya Smart, Homcloud or SmartLife app from Google Play/App Store, or scan QR codes here.



2. Enter the register/login interface and register with your country area code and phone number/email.
3. Wait a few minutes for verification code (via email or text message) and enter it where required along with a password (between 6 and 20 numbers and letters).

STEP 2: DIMMER MODULE CONFIGURATION

1. Connect your mobile device to a 2.4 GHz Wi-Fi network and launch the App.
2. See "wiring instructions" if you haven't done it yet.
3. Press traditional dimmer off (the one connected to the Wi-Fi dimmer module). Then press and hold for 10 secs until light connected to the module flicks quickly, entering into configuration mode (if you wait more than 120 secs you will need to repeat this passage).

4. Keep smartphone close to the dimmer switch you want to configure (approx 30cm) and tap "add device" or the "+" icon on the App homepage. After that, tap "smart switch" on the Wi-Fi devices list.

5. Tap "confirm indicator rapidly blinks".
6. Insert or confirm Wi-Fi network name and password.
7. Wait for configuration to be completed then tap "Done".
8. Rename the smart dimmer module and choose room name if you wish.

STEP 3: CONNECT TO GOOGLE HOME AND ALEXA

Download and install Google Home or Amazon Alexa App for mobile and control your devices with your voice with Smart Speakers* or with your smartphone.

*Smart Speakers to be bought separately.

Important: if you want to link Apps to Google Home or Amazon Alexa App you need to select "Smart Life" App in the list of Google Home or Amazon Alexa partners. (After this passage you will be automatically redirected to Tuya Smart, Homcloud or SmartLife App).

FAQ

What should I do if I can't configure the dimmer module?

- a. Please check if device is powered on.
- b. Make sure your mobile and dimmer module are on the same 2.4 Ghz WIFI network.
- c. Check if Wi-Fi has good internet conditions.
- d. Make sure the password entered is correct.
- e. Make sure the wiring is correct.

Which lights can I control with the dimmer module?

Mainly Triac led lights, incandescent and halogen lamps.

What happens if the Wi-Fi goes off?

You can still control the light connected the dimmer module with your traditional switch and once WIFI is active again the device connected to the module will reconnect automatically to your WIFI network.

What should I do if I change the WIFI network or password?

You have to re-connect our Wi-Fi dimmer module to the new Wi-Fi network following instructions on the App User Manual.

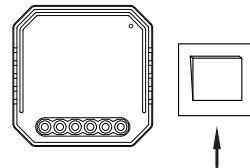
How do I reset the device?

Press off the led light (the one connected to the Wi-Fi dimmer module) Then press and hold for 10 seconds or more* until the lamp connected to the module flicks quickly,* entering into configuration mode.

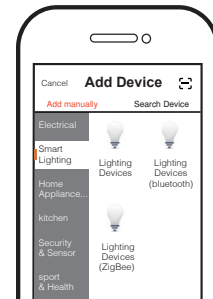
APP USER MANUAL



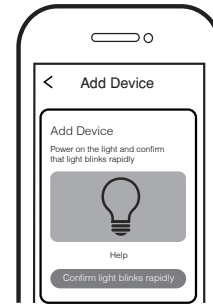
- 1 Scan the QR code to download Tuya Smart, Homcloud or SmartLife App, or you can also search for them on the App Store or Google Play. Log in or register your account with your mobile number or e-mail address. Type in the verification code sent to your mobile or mail box, then set your login password.



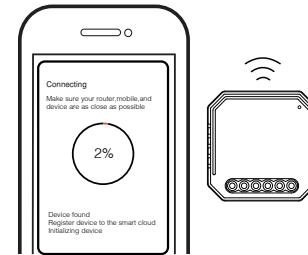
- 2 Turn off the led light (the one connected to dimmer module), then press the switch and hold for 10 seconds or more until lamp connected to the module will flick quickly and enter into configuration mode. If you wait more than 120 seconds, you will need to repeat this passage.



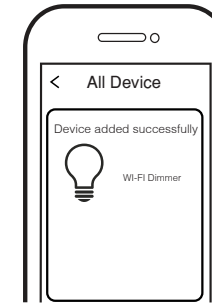
- 3 Open the APP, selecting "+" on top right to add the device. Choose the right type of device, for example "Smart Lighting".



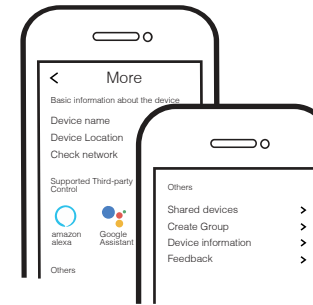
- 4 Make sure your smart phone and Wi-Fi dimmer are under the same Wi-Fi 2.4GHz network. Confirm when the light flicks quickly (twice a second).



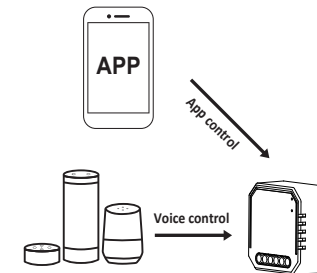
- 5 The pairing will take about 10-120 seconds to complete depending on your network condition.



- 6 When pairing is done, the Wi-Fi dimmer will be shown on the App.



- 7 Connect to Amazon Alexa or Google Assistant for voice control, or share the devices with your family or friends



- 8 Enjoy your smart life of home automation for lighting control by using our All-in-one mobile app wherever you are in the world or simply with voice control when you are sitting at home comfortably.