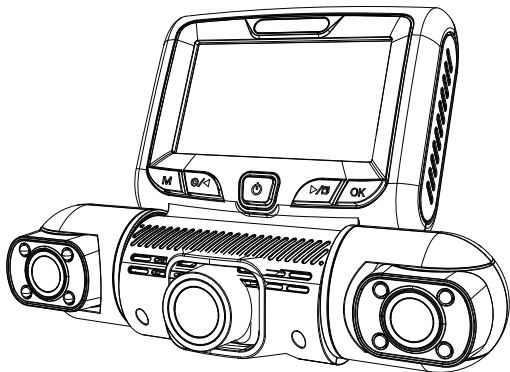
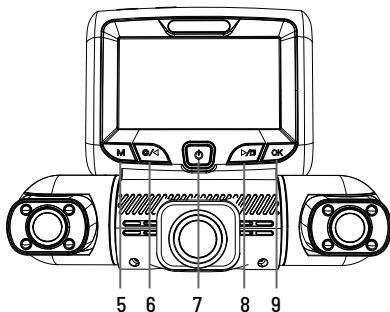
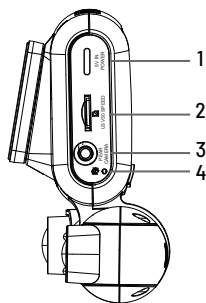





PRUVEEO






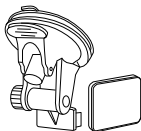
User Manual



1. Power Slot
2. Micro SD Card Slot
3. Rear Camera Slot
4. Reset Button
5. Menu Button / Mode Switch Button
6. Video On/Off / Take Photo Button
7. Power Button / Screen On/Off Button
8. Screen Switching / Audio On/Off Button
9. Confirm Button / Emergency Lock Button

Button	Functions
	Press to turn on or off the screen Press and hold for 3 seconds to turn the device on or off
	Press to confirm a selection while in setting mode Recording Mode Hot Key: Emergency Lock (Press to manually lock/unlock the video file during recording)
	Please stop recording first Press Once / Twice to switch between settings, press and hold for 3 seconds to exit the menu Press and hold for 3 seconds to switch between video recording/playback modes In Playback mode, press to switch between the four cameras

Button	Functions
	Press to navigate UP through options in settings mode Press to start/stop video recording Press and hold for about 3 seconds to take a photo
	Press to navigate DOWN through options in settings mode Press to switch the image between the four cameras Press and hold for 3 seconds to turn the Audio recording on / off
	Press and hold for 5 seconds to reset the device if operates erratically, hangs up or freezes



① Suction Cup and Adhesive Mount



② Packing Box



③ User Manual



④ Windshield Electrostatic Sticker



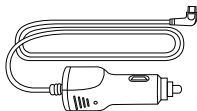
⑤ Dash Cam



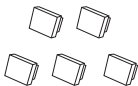
⑥ Rear Camera



⑧ Micro SD Card



⑩ Car Power Connector



⑦ Cable Adhesive Spacer

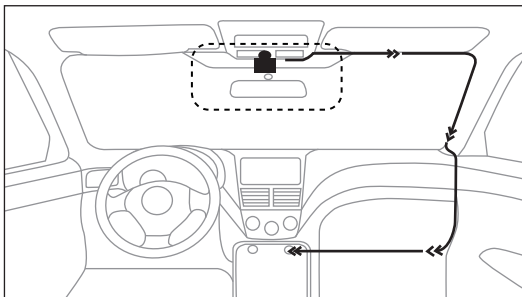


⑨ Cable Management Tool

Place the dash cam on the mount carefully route the power cable around the windscreen and tuck it in under the trim.

Plug the power cord into a 12V DC power outlet or the car cigarette lighter.

Connect the power cord to the camera. The camera will auto-start recording once powered on.



The dash cam is automatically powered on when plugged into a 12V accessory socket or cigarette lighter and receives a charge (i.e.: the vehicle is started).

To turn the device on manually, press and hold the power button until the welcome screen appears.

The camera will automatically start recording when powered on.

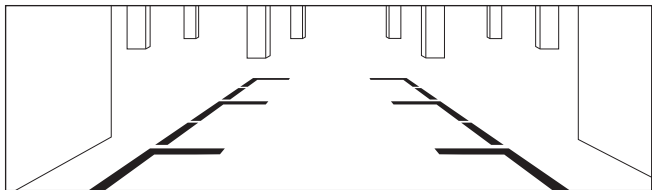
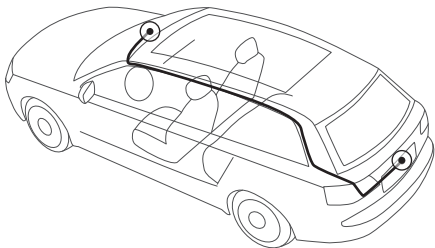
You will need to insert a memory card before you can begin recording. Before inserting or removing a memory card, first ensure you've powered down the dash cam. Gently push the memory card in until you hear a click, and allow the spring release to push the card out.

Power the dash cam by connecting the charger to the car cigarette lighter and dash cam. Ensure the dash cam records to your memory card properly and without error. Before you start using a new memory card, you must format the card within the camera using the format function. Always back up important data stored on the memory card before formatting.

Mount the rear camera and dash cam as shown below. Use the provided rear camera cable to connect the rear camera to the front camera.

To install the waterproof rear camera of a dash cam with a parking assist function, follow these detailed steps:

1. Locate a suitable mounting position for the rear camera, typically on the rear windshield or license plate area. Ensure it provides a clear view behind the vehicle.
2. Clean the mounting surface thoroughly with an alcohol wipe to ensure proper adhesion.
3. If mounting on the rear windshield, use the included mounting bracket or adhesive pad to secure the camera in place. If mounting on the license plate area, use the license plate mounting bracket.
4. Route the rear camera cable along the interior trim panels, headliner, and pillars towards the front of the vehicle. Use cable clips or tucks to secure the cable neatly.
5. Connect the rear camera cable to the corresponding port on the main dash cam unit, usually labeled "Rear Cam" or similar.
6. For the parking assist function, you'll need to connect the rear camera's trigger wire to the reverse light circuit. Locate the reverse light wires, typically near the rear lights or trunk area. Use a multimeter or circuit tester to identify the wire that powers the reverse lights.
7. Once identified, use a wire tap or solder to connect the rear camera's trigger wire to the reverse light wire. This will enable the rear camera to automatically display when the vehicle is in reverse gear.
8. Test the rear camera and parking assist function by shifting the vehicle into reverse. The dash cam's display should switch to the rear camera view, and parking assist lines should appear on the screen to guide you during reversing maneuvers.
9. Adjust the rear camera's angle and position as needed for optimal viewing. Some cameras allow you to flip or mirror the image if the camera is mounted upside down.
10. Secure any loose cables using cable ties or tucks to prevent interference with vehicle operation.
11. The rear camera red wire provides 12-volt power to the rear camera. It is not necessary to connect the red wire to the power source if you do not want to use the park assist function. But if you want to use the parking assist function, you need to connect the red wire to the power source of your reverse light, so that the dash cam screen will automatically display the image of the rear camera when the vehicle is in reverse.



Please scan the QR code with your mobile phone or open the following URL in your browser to view the installation video for the dash cam and rear camera.

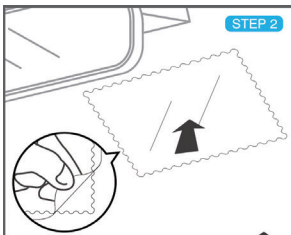


t.ly/w5JSE



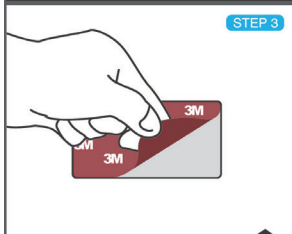
STEP 1

Clean the area of the windshield where you plan to stick the 3M adhesive mount.



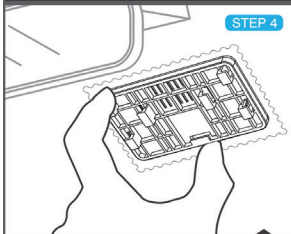
STEP 2

Attach the windshield sticker applicator included in the box to the windshield to make it easier to remove the 3M adhesive mount when the dash cam is not in use.



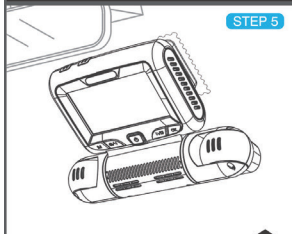
STEP 3

Peel off the protective film from the adhesive on the mount.



STEP 4

Press the adhesive side of the mount firmly against the windshield for about 30 seconds. Allow the adhesive to set for 2 hours before attaching the dash cam.



STEP 5

Try and move the mount to check for stability. Attach the dash cam to the mount and adjust the recording angle.

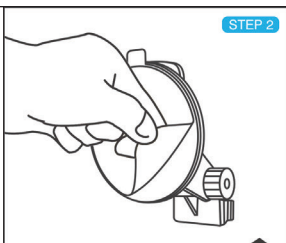
Suction Cup Mount Installation:

09



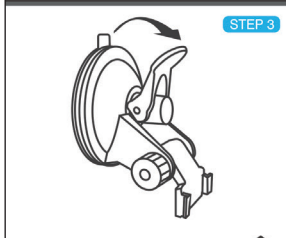
STEP 1

Clean the windshield area where you plan to place the suction cup mount.



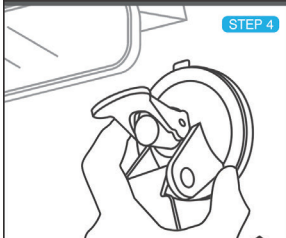
STEP 2

Peel off the plastic protective film on the suction cup mount.



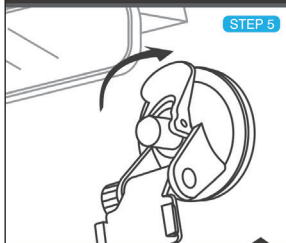
STEP 3

Ensure the locking lever is in the UP position.



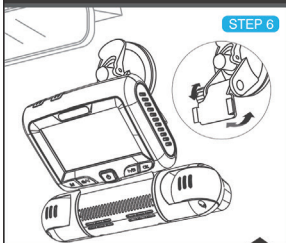
STEP 4

Press the mount's button down with good force. This is what creates the suction.



STEP 5

Rotate the mount's lever down to lock it.



STEP 6

Try and move the mount to check for stability. Attach the dash cam to the mount and adjust the recording angle.

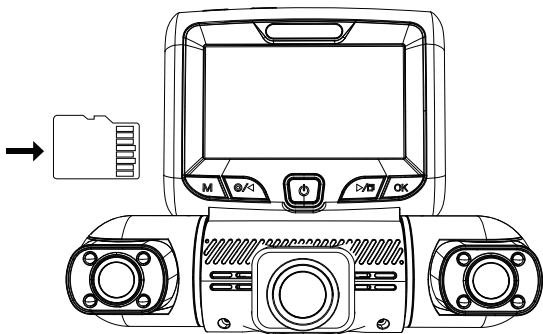
Your device accepts memory cards with a maximum capacity of 256 GB. Depending on the memory card manufacturer and type, some cards may not be compatible with your device. Using an incompatible card may damage the unit or the memory card, or corrupt the data stored on it.

Please face the screen of the D90-4CH Dash Cam.

- Insert a memory card with the gold-colored contacts facing you.
- Push the memory card into the slot until it clicks.

It is recommended that you reformat a memory card each time you transfer videos from it to a computer, or at least once a month.

Reformatting a memory card keeps important elements of the data and file structure clean, which helps prevent error messages and missing images. Reformatting also restores the memory card, which can help prevent it from becoming corrupted.



Removing the Memory Card

11

Before removing a memory card from your dash cam, you must first unmount it for safe removal.

To remove a memory card from your device

1. Press the Video Capture button to stop recording.
2. Press and hold the power button to turn off the unit.
3. Gently push in and release the memory card until it unlocks.

PLEASE DO NOT remove the memory card while the device is transferring or accessing information. Doing so may result in data loss, corruption, or damage to the memory card or device. PRUVEEO is not responsible for any loss, including loss of data, resulting from the use of damaged memory cards.

Formatting the Memory Card

12

1. Press the Video Record button to stop the device from recording.
2. Press the MENU button twice to enter the General Settings.
3. Press the DOWN button to navigate to the Format options.
4. Press OK to format the SD card.

Please format the card on the dash cam before using it. Before formatting a memory card, always remember to make backup copies of all important data stored on the device. The manufacturer's warranty does not cover loss of data due to user actions.

Camera Resolution

All four cameras have FHD 1080P (1920 x 1080P) resolution.

Loop Recording

When Loop Recording mode is enabled, the unit continuously erases older video while recording new video, keeping only the video captured within a user-selected time range. Any video older than this range will be replaced with a new video. (Note: any locked video files on the memory card remain protected and are not automatically deleted during loop recording).

It is recommended that you reformat a memory card every time you transfer videos from it to a computer, or at least once a month. This keeps important elements of the data and file structure clean, which helps prevent error messages and missing videos.

Remember to always make backup copies of all important data stored on the device. The manufacturer's warranty does not cover loss of data due to user actions.

1. Press MENU once to enter Video Settings.
2. Press the UP or DOWN button to navigate to the "Loop Recording" option.
3. Press OK to view the current selection: 1 minute
4. Press the UP or DOWN button to make your selection.
5. Press OK to confirm your selection.
6. Press and hold the Menu button for 3 seconds to exit.
7. It is recommended to use the 1 minute option.

Gravity Sensing

If a change in gravity is detected, such as a car crash, the G-sensor will accident, the G-sensor will signal the camera and an automatic file lock will be placed on the current video, preserving your most important footage.

Note: Locked video files won't be deleted by Loop Recording, they will remain on the memory card until they are manually deleted or the card is formatted.

1. Press MENU once to enter Video Settings.
2. Press the UP or DOWN button to navigate to the "Gravity Sensing" option.
3. Press OK to view the current selection High/Middle/Low/Close status
4. Press the UP or DOWN button to enable or disable this feature.
5. Press OK to confirm your entry.
6. Press and hold the Menu button for 3 seconds to exit.

Date Stamp

You have the option to display the date and time in your videos. Note that the date and time stamp cannot be removed from videos if this feature was enabled when they were recorded.

1. Press MENU once to enter the Video Settings.
2. Press the UP or DOWN button to navigate to the "Date Stamp" option.
3. Press OK to view the current selection ON/OFF status.
4. Press the UP or DOWN button to enable or disable this feature.
5. Press OK to confirm your entry.
6. Press and hold the Menu button for 3 seconds to exit.

Recording Audio

You can choose to record audio with video or turn off the microphone so that all recorded video is muted.

1. Press MENU once to enter Video Settings.
2. Press the UP or DOWN button to navigate to the "Recording Audio" option.
3. Press OK to view the current selection On/Off.
4. Press the UP or DOWN button to turn this feature on or off.
5. Press OK to confirm your entry.
6. Press and hold the Menu key for 3 seconds to exit.

Alternatively, you can use a hotkey shortcut for this function. Press and hold 7 for about 3 seconds to mute/unmute the microphone for video recording.

Exposure

Adjust the camera's exposure value to make the recorded video brighter or darker according to your preference.

1. Press MENU once to enter Video Settings.
2. Press the UP or DOWN button to navigate to the "Exposure" option.
3. Press OK to display the current selection: +0.0, +1/3, -1/3, etc.
4. Press the UP or DOWN button to make your selection.
5. Press OK to confirm your selection.
6. Press and hold the Menu button for 3 seconds to exit.

Light Frequency

This option should be set according to the power supply specification used in your country or geographical region (U.S. users should select the "60Hz" option).

1. Press MENU once to enter the Video Settings.
2. Press the UP or DOWN button to navigate to the "Light Frequency" option.
3. Press OK to display the current selection: 50Hz / 60Hz
4. Press the UP or DOWN button to change your selection.
5. Press OK to confirm your selection.
6. Press and hold the Menu button for 3 seconds to exit.

Format

Performing this operation will format the memory card and erase all files.

Note: Locked video will also be deleted, so make sure you have backed up your important footage before formatting the card.

Please format your micro SD card on the dash cam before using it.

1. Press the Video Capture button to start recording first.
2. Press the MENU button twice to enter the general settings.
3. Press the DOWN button to navigate to the "Format" option.
4. Press OK to format the SD card.
5. Press and hold the Menu button for 3 seconds to exit.

Screen Saver

Select a time for the screen to remain lit after the recording starts.

1. Press MENU twice to display the General Setup screen.
2. Press the UP or DOWN button to navigate to the "Screen Saver" option.
3. Press OK to display the current selection: 1 min / 3 min / OFF
4. Press the UP or DOWN button to make your selection.
5. Press OK to confirm your selection.
6. Press and hold the Menu button for 3 seconds to exit.

Alternatively, you can use a hotkey shortcut for this function. While in Capture mode, press the Power button to turn on/off the LCD screen.

Language

Use the following procedure to change the language of the unit.

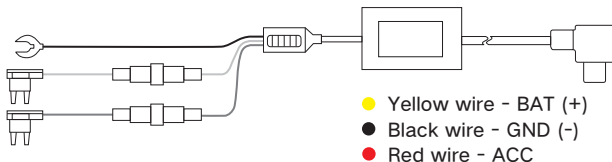
1. Press MENU twice to enter General Settings.
2. Press the UP or DOWN button to navigate to the "Language" option.
3. Press OK to display the current language selection.
4. Press the UP or DOWN button to change the selection.
5. Press OK again to confirm your selection.
6. Press and hold the Menu button for 3 seconds to exit.

Parking Monitor (Parking Mode)

Parking Mode allows you to monitor your parked vehicle. When the engine is turned off, a hardwire kit is used to provide continuous power and protect your car battery from draining.

1. Press MENU twice to enter General Settings
2. Press the UP or DOWN button to navigate to the "Parking Monitor" option.
3. Press OK to view the current selection: Off / Gravity Sensing/ Time Lapse.
4. Press OK to confirm.
5. Press UP or DOWN button to change your selection.
6. Press OK to confirm your selection.
7. Press and hold the Menu button for 3 seconds to exit.

To use the Parking Mode feature, you must also use the ACC Hardwire Kit. Please search for and purchase the "PRUVEEO ACC Hardwire Kit" on Amazon.com.



Warm Tips:

When installing the ACC hardwire kit, please refer to the actual product.

Automatic Parking Mode. The ACC (ignition-switched) detection feature will allow the dash cam to switch to parking mode automatically if the vehicle's engine turns off and switch back to normal recording after the vehicle's engine turns on.

Regarding the installation of the ACC hardwire kit, if you need more information, please search for "acc hardwire kit parking mode" on YouTube.com.

You are welcome to show us your Fuse Schematics by email asking for our help if you have difficulties in the HWK installation.

※ There are 2 options under parking mode, we recommend using the Time Lapse option.

• Time Lapse Recording:

Record video in one frame per second to conserve memory and reduce the time it takes to review video.

- Gravity Sensing Record:

The Gravity Sensing detects significant or sudden movement (such as an impact or collision), and it will trigger an event recording. We suggest setting the "Gravity Sensing" to High sensitivity for parking mode Recording.

✖ **If you do not use the parking mode function, please change "Gravity Sensing" to LOW sensitivity. Otherwise, the dash cam will easily lock the video and cannot be deleted by the loop recording function. This will cause the memory card to be full of locked videos and cause the recorder to fail normal work.**

Time-lapse Recording

Time-lapse is a creative filming and video editing technique that manipulates the way the frame rate is captured. ... In most videos, the frame rate and playback speed are the same. In a time-lapse video, the frame rate is stretched much more: when played back at average speed, time appears to be speeding up.

Record video at one frame per second to conserve memory and reduce the time it takes to review the video.

All the Time-lapse recordings are saved in the VIDEO folder. These video files have images but without sound.



Caution

When you DO NOT use the parking monitoring function, please turn off this option, otherwise, the recorded video will be in fast-forward mode.

1. Press MENU twice to enter General Settings
2. Press the UP or DOWN button to navigate to the "Parking Monitor" option
3. Press OK to view the current selection: Off / Gravity Sensing/ Time Lapse
4. Press the UP or DOWN button to select the OFF option
5. Press OK to confirm your entry
6. Press and hold the Menu button for 3 seconds to exit

Please scan the QR code with your mobile phone or open the following URL in your browser to view the installation video for the ACC hardwire kit.



t.ly/21NNu

IR LED

Use the following procedure to turn the infrared lights on or off.

1. Press MENU twice to access General Settings.
2. Press the UP or DOWN button to navigate to the "IR LED" option.
3. Press OK to confirm your entry.
4. We recommend to use the Auto option.
5. Press and hold the Menu button for 3 seconds to exit.

System Volume

Increase or decrease the volume of your dash cam.

1. Press MENU twice to enter General Settings.
2. Press the UP or DOWN button to navigate to the "System Volume" option.
3. Press OK to display the current selection High/Middle/Low/Close
4. Press OK to confirm your selection.
5. Press and hold Menu for 3 seconds to exit.

Key Sound

Allows you to turn the device's button sound effect on or off.

1. Press MENU twice to enter General Setup.
2. Press the UP or DOWN button to navigate to the "Key Sound" option.
3. Press OK to see the current selection On/Off.

4. Press the UP or DOWN button to turn this feature on or off.
5. Press OK to confirm your entry.
6. Press and hold the Menu button for 3 seconds to exit.

Date and Time

Use the following procedure to change the time and date of the unit.

1. Press MENU twice to enter General Settings.
2. Press the UP or DOWN button to navigate to the "Date and Time" option.
3. Press OK to display the date/time in the format YYYY/MM/DD HH:MM:SS.
4. Press the UP or DOWN key to change the highlighted number.
5. Press OK to move to the next date/time segment and repeat step 4.
6. Press OK again to confirm your entry.
7. Press the Menu button to exit the date and time setting.
8. Press and hold the Menu button for 3 seconds to exit.

Set Time Zone

Updates the time automatically with your time zone.

1. Press MENU twice to enter General Settings
2. Press the UP or DOWN button to navigate to the "Set Time Zone" option
3. Press OK to view the current selection
4. Press the UP or DOWN button to make your selection
5. Press OK to confirm your entry
6. Press MENU to exit settings

Daylight Saving

Enable / Disable Daylight Saving Time

1. Press MENU twice to enter General Settings
2. Press the UP or DOWN button to navigate to the "Daylight Saving" option
3. Press OK to view the current ON/OFF status for this feature

4. Press the UP or DOWN button to enable or disable this feature
5. Press OK to confirm your entry
6. Press MENU to exit settings

GPS Speed Unit

Select GPS speed unit (built-in GPS logger)

1. Press MENU button twice to enter General Settings
2. Press the UP or DOWN button to navigate to the "GPS Speed Unit" option
3. Press OK to view the current selection: KM/H / MP/H / OFF
4. Press the UP or DOWN button to make your selection
5. Press OK to confirm your entry
6. Press MENU to exit settings

GPS Information

1. Press MENU twice to enter General Settings
2. Press the UP or DOWN button to navigate to the "GPS Information" option
3. Press OK to view the current GPS signal status
4. Press MENU to exit

Wi-Fi

WiFi connection first when you want to operate the dash cam.

1. Press MENU twice to enter General Settings.
2. Press the UP or DOWN button to navigate to the "WiFi" option.
3. Press OK to see the current ON/OFF status of this feature.
4. Press the UP or DOWN button to change your selection.
5. Press OK to confirm your selection.
6. Press MENU to exit settings.

Alternatively, you can use a hotkey shortcut for this feature. Press and hold OK for about 3 seconds to turn the WiFi feature on/off.

Wi-Fi Connection Guide

With the dash cam's built-in Wi-Fi, you can change the dash cam's settings and play and download recorded video using the APP on your cell phone.

If you want to see the GPS track of the video, please download the video to your phone first, then the GPS track will be displayed.

The effective working distance of Wi-Fi is 5 meters.

Downloading the Wi-Fi App

- The Wi-Fi app is available for free download from the Apple App Store™ and Google Play Store™.

- Android users: Go to the Google Play Store™, search for GFG CAM, download and install, and follow these instructions to connect and operate the Wi-Fi.

- iPhone users: Enter the Apple App Store™, search for GFG CAM, download and install, follow this user guide to connect the Wi-Fi and operate.

To pair the camera with your device

1. Turn on the camera, please stop recording first by pressing the Video Recording button, then you can operate other buttons, please press and hold the OK button for about 3 seconds to start the Wi-Fi function, you can also start the Wi-Fi function in the menu.

2. The LCD screen will display the Wi-Fi SSID and password.

3. Search for a Wi-Fi hotspot on your smartphone/tablet, select the network and you will be prompted for a password; enter '12345678' to proceed, once connected, only the Wi-Fi function key can be used, press and hold the Wi-Fi key to exit the Wi-Fi function.

4. Open the GFGCAM application on your smartphone/tablet.



You can also scan the QR code to download the GFGCAM APP

Restore Factory Settings

Performing this operation will reset all of your device's settings to their original values. Note: All custom settings will be lost.

1. Press MENU twice to access General Settings.
2. Press the UP or DOWN button to navigate to the "Restore Factory Settings" option.
3. Press OK to display YES / NO confirmation for this operation.
4. Press the UP or DOWN key to make your selection.
5. Press OK to confirm your selection.
6. Press and hold the Menu button for 3 seconds to exit.

Video Playback

You can play videos on a device or a computer.

To play a video on the computer, either use an SD card adapter. To play a video using an SD card adapter, remove the memory card and insert it into an SD card adapter. Insert the adapter into the computer.



event



park



photo



version



video

Event folder: Used to store the gravity-sensitive locked video files.

Park folder: Used to store the video files for parking monitoring.

Photo folder: Used to store the photos.

Version folder: Used to store the system files, please do not delete it.

Video folder: Used to store the video files recorded by the dash cam.



FRONT



LEFT



REAR



RIGHT

The video files and photos recorded by the four cameras of the Dash Cam are stored in the four folders above.

To play a video on the device, first stop recording and press and hold the M button to switch to Playback mode. Use the UP and DOWN buttons to scroll to the desired video. Press the OK button to play. During playback, use the OK (pause), UP (press and hold to rewind), and DOWN (press and hold to fast forward) buttons to control the video playback.

GPS Video Playback

You can play back your recordings in a special application that lets you view speed and location information along with your footage.

Windows:

Please download the software from the following official website:
<https://pruveeo.us/pages/download>

Mac OS:

Visit the Apple App Store™, search for 'GXPlayer', download and install.

Access Video Files:

Insert the micro SD card into your computer to access the video files.

To open a GPS video file:

1. Once you've opened the application, navigate to the top menu bar and click File > Open to browse your files.
2. Browse to the video file you want to add to the playback queue, select it, and click Open to load it into the application. You can also select multiple videos at once.

3. After a short loading time, the (first) video should start playing automatically, with real-time speed and location information displayed in the right panels.



Warm Tips:

After many analyses, we found that most of the dash cam problems are caused by the card, because the speed and number of erasing and writing of the memory card cannot meet the requirements.

Therefore, we recommend our High Endurance 128GB or 256G MicroSDXC memory card for this car dash cam, which can make the D90-4CH car dash cam more stable, reliable and work continuously for a long time.

128G Link: www.amazon.com/dp/B0C1NL4BS8

256G Link: www.amazon.com/dp/B0C1NN48HT

***PLEASE DO NOT USE "Generic Class 10" cards from third party suppliers. They are NOT made for 4 channel recording dash cam.**