

WALK THE CUSTOMER THROUGH EACH OF THE FOLLOWING KEY DELIVERY FEATURES


How to Defrost - page 25-27

- 1 Press the front defrost button.
- 2 Set to warmest temperature setting.
- 3 Set to highest fan speed.

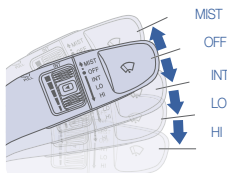
Tire Pressure Monitoring System (TPMS) - page 39



LOW TIRE PRESSURE INDICATOR /
TPMS MALFUNCTION INDICATOR

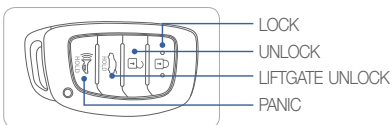
NOTE: Tire pressure may vary in colder temperatures causing the low tire pressure indicator  to illuminate. Inflate tires according to the Tire Pressure Label located on the driver's side door pillar.

Windshield Wiper / Washer - page 10




- To activate wipers, move the switch down to one of the three positions (INT, LO, HI).
- To adjust "INT" speed, move switch.
- To spray washer fluid, pull lever toward you.
- Push lever up for a single wiper pass.

Unlocking vehicle - page 02



BLUE LINK - pages 33-35

- Assist with creating MyHyundai.com account
- Assist with Blue Link enrollment
- Show Blue Link Users Manual & tear out Voice Commands/Quick Tip Card
- Encourage customers to press the Blue link button 

MAINTENANCE

Scheduled Maintenance	Normal Usage		Severe Usage*	
Tire Rotation	Perform	5,000	Perform	5,000
Climate Control Air Filter (for Evaporator and Blower Unit)	Replace	15,000	Replace	More Frequently
Air Conditioning Refrigerant	Inspect	15,000	Inspect	Same As Normal
Brake Hoses & Lines	Inspect	15,000	Inspect	Same As Normal
Drive Shafts & Boots	Inspect	15,000	Inspect	7,500
Front Disc Brake/Pads, Calipers & Rotors	Inspect	15,000	Inspect	More Frequently
Rear Brake Disc/Pads	Inspect	15,000	Inspect	More Frequently
Steering Gear Box, Linkage & Boots/Lower Arm Ball Joint, Upper Arm Ball Joint	Inspect	15,000	Inspect	More Frequently
Suspension Mounting Bolts	Inspect	15,000	Inspect	Same As Normal
Brake fluid	Inspect	30,000	Inspect	Same As Normal
Coolant	1st Replace 120,000 or 120 mos. Add'l Replace 30,000 or 24 mos.		Replace	Same As Normal
Reduction Gear Fluid	Inspect	37,500 or 30 mos.	Replace	75,000

*Check the engine oil regularly between recommended oil change. Hyundai recommends Quaker State oil.

*See Owner's Manual for details.

Looking For more detailed information? This Quick Reference Guide does not replace your vehicle's Owner's Manual. If you require additional information or are unsure of a specific issue, we recommend that you always refer to the vehicle's Owner's Manual or contact your authorized Hyundai dealer. The information contained in this Quick Reference Guide is correct at the time of printing; however, specifications and equipment can change without notice. No warranty or guarantee is being extended in this Quick Reference Guide, and Hyundai reserves the right to change product specifications and equipment at any time without incurring obligations. Some vehicles are shown with optional equipment.



HYUNDAI **IONIQ electric**
Quick Reference Guide

www.hyundai.com



HYUNDAI
NEW THINKING.
NEW POSSIBILITIES.

Roadside Assistance: **1-800-243-7766**
Consumer Affairs: **1-800-633-5151**
Sirius XM® Radio: **1-800-967-2346**
Blue Link: **1-855-2BLUELINK**
(1-855-225-8354)

Table of contents

GETTING STARTED

Driver position memory system	05
Front seat adjustment (manual)	03
Front seat adjustment (power)	03
Headrest adjustment	04
Power button	05
Seat belt adjustment (front seat)	04
Smart key	02

FEATURES AND CONTROLS

Automatic climate control	25-27
Aux. battery saver+	23
Charging door	07
Child-protector rear door lock	13
Clock adjustment	16
Driver's main controls	08
Dynamic bending light (DBL)	10
Electric vehicle system modes	24
ECO guide	21
Headlights	09
High voltage battery cooling duct	16
High voltage battery SOC (state of charge) gauge	21
Homelink wireless control system	14
Instrument cluster	18
Instrument panel illumination	23
Interior lights	12
LCD display control	22
LCD display modes	22
Liftgate opening	12
Rear seat folding	13
Rear view camera	16
Seat warmer (front seats)	15
Steering wheel adjustments	06
Sunroof	11
Warning and indicators	18-20
Wireless cellular phone charging system	15
Wiper and washer	10

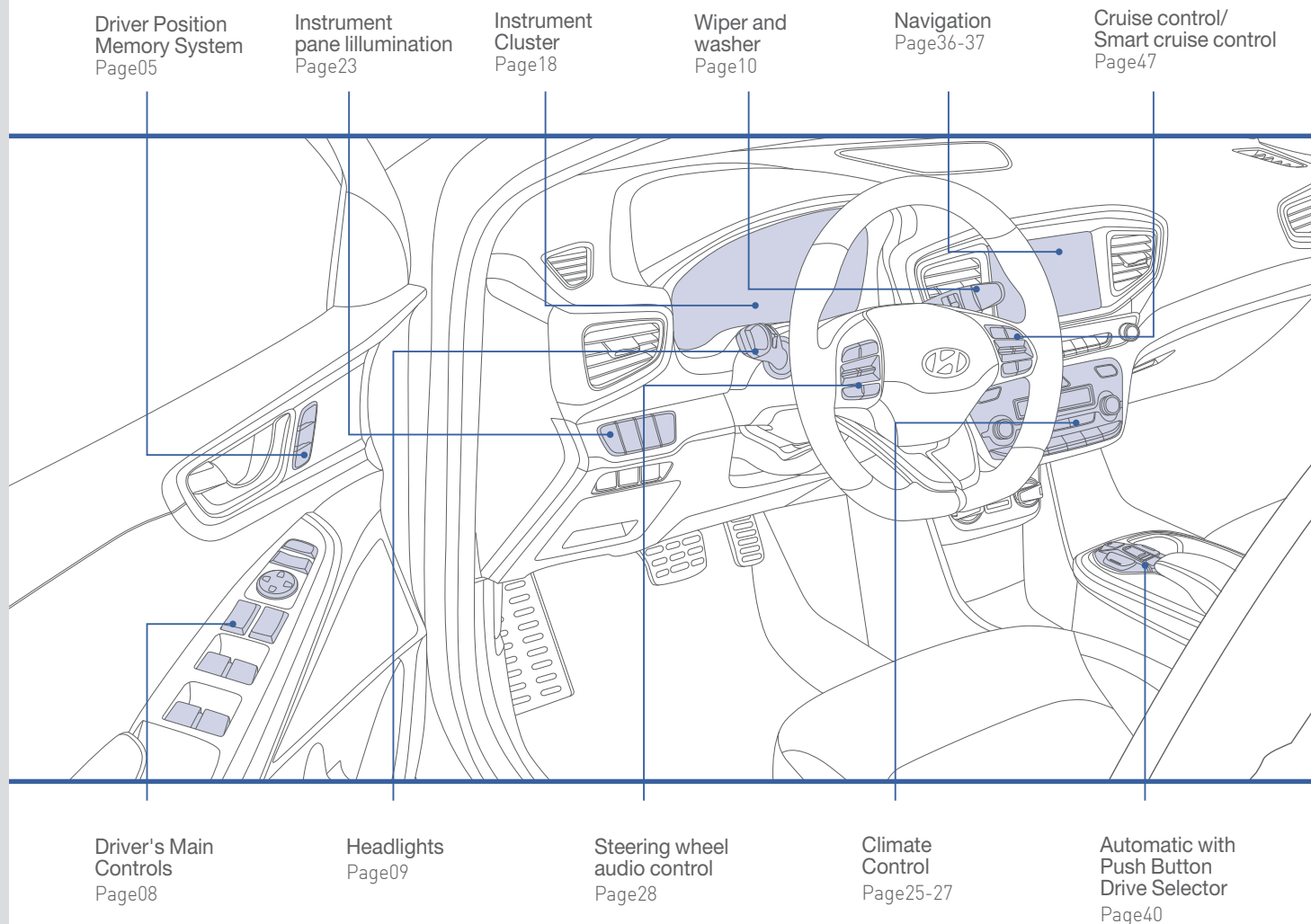
MULTIMEDIA

AUX, USB and iPod® port	37
Blue Link Telematics System	33-35
Bluetooth® phone call operational tips	28-29
Bluetooth® phone operation	31-32
Navigation	36-37
Steering wheel audio control	28
Voice recognition tips	30

DRIVING

Automatic with Push Button Drive Selector	40
Auto hold	42
Autonomous emergency braking (AEB)	46
Blind spot detection system (BSD)	45
Cruise control/smart cruise control	47
Drive mode integrated control system	44
Electric vehicle	48
Electric vehicle components	38
Electronic parking brake (EPB)	41
Electronic stability control (ESC)	43
Lane departure warning system (LDWS)	45
Tire pressure monitoring system (TPMS)	39
Regenerative Brake Level Control Paddles	40
Virtual engine sound system (VESS)	41

* Some vehicles may not be equipped with all the listed features.

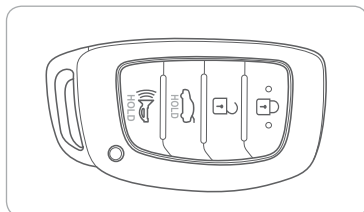


Use this Quick Reference Guide to learn about the features that will enhance your enjoyment of your Hyundai. More detailed information about these features are available in your Owner's Manual.

WARNING!

To reduce the risk of serious injury to yourself and others, read and understand the important SAFETY INFORMATION in your Owner's Manual.

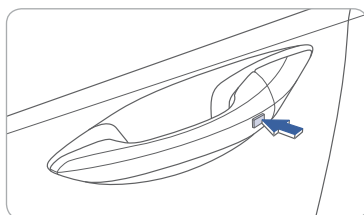
SMART KEY



- Lock
- Unlock
- Liftgate Unlock
- Panic

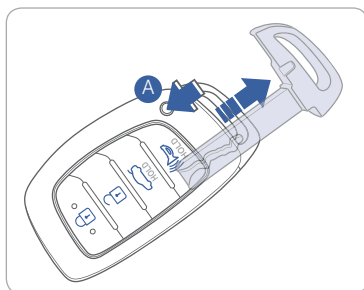
NOTE:

User selectable option : see the Owner's Manual for more details.



Driver's door Lock / Unlock
Smart key must be within 28~40in. from the outside door handle.

Press: Once - Unlock driver door
Twice - Unlock all doors
Third - Lock all doors



Removing the mechanical key

Press and hold the release button **A** to remove the mechanical key.

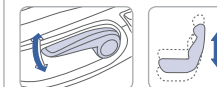
FRONT SEAT ADJUSTMENT (Manual)



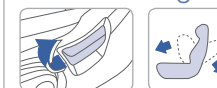
Forward and backward **1**



Seat cushion height **2**



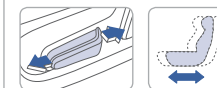
Seatback angle **3**



FRONT SEAT ADJUSTMENT (Power)



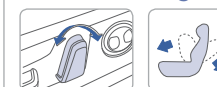
Forward and backward **1**



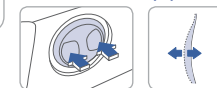
Seat cushion height **1**



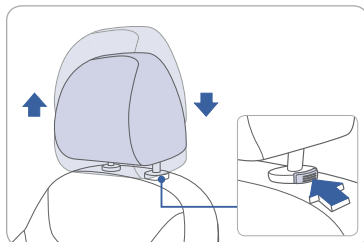
Seatback angle **2**



Lumbar support **3**



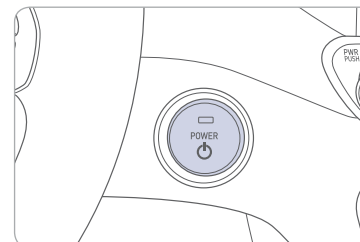
HEADREST ADJUSTMENT



To Raise the Headrest:
Pull headrest up.

To Lower the Headrest:
Press lock button while pressing down on headrest.

POWER BUTTON



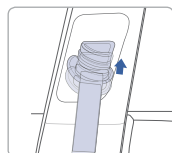
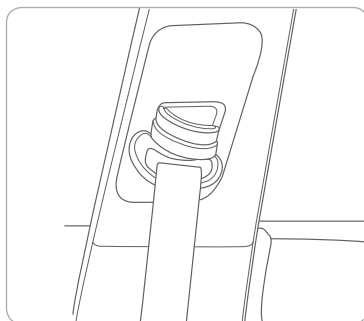
With the vehicle OFF and foot OFF of brake pedal, press the POWER button.

- Once for ACC (Accessory) mode.
- Twice for ON mode.
- Three times for OFF.

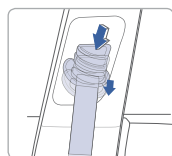
To start the vehicle, depress the brake pedal and press the POWER button with the gear in the P (Park) position.

To turn off the vehicle, press the POWER button with the gear in P (Park).

SEAT BELT ADJUSTMENT (Front seat)

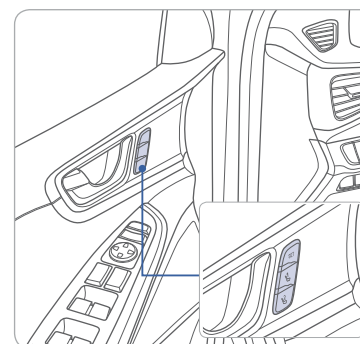


Pull up to raise.



Press button and push down to lower.

DRIVER POSITION MEMORY SYSTEM



Storing

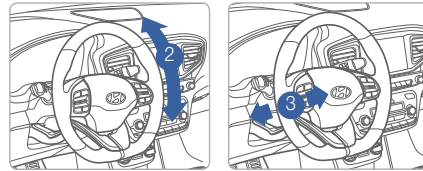
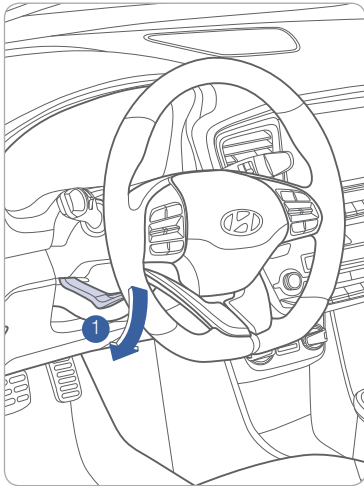
1. Adjust the driver's seat position, outside rearview mirror position and instrument panel illumination intensity.
2. Press the SET button. The system will beep once.
3. Press one of the memory buttons (1 or 2) within 4 seconds. The system will beep twice.

NOTE: The gear position must be in P (Park).

Recalling

Press the desired memory button (1 or 2). The system will beep once.

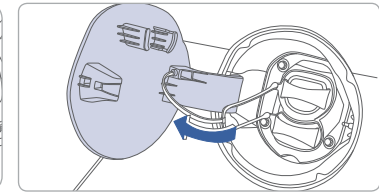
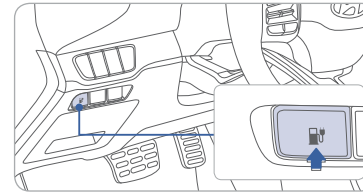
STEERING WHEEL ADJUSTMENTS



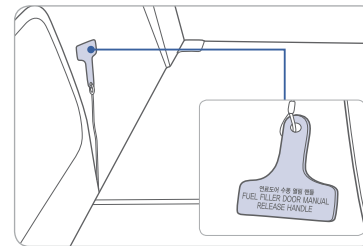
NOTE: Do not adjust while driving.

1. Pull the lever ① down.
2. Set the angle ② and distance ③.
3. Pull the lever ① up to lock position.

CHARGING DOOR



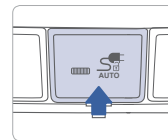
Push the charging door open button to open the charging door. After recharging, install the bottom inlet cover first before installing the upper inlet cover. And, close the charging door until it is latched securely.



Emergency charging door opening

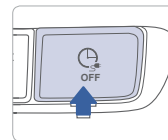
Open the tailgate and slightly pull the emergency cable.

In case charging door does not open by pressing dash button, pull the emergency cable.



Plug unlock when fully charged

Press to enable to unlock the plug when full charged.



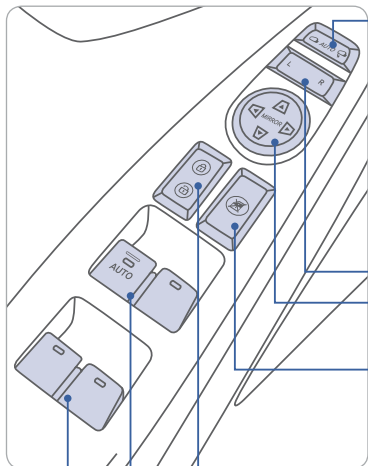
Charge timer activation

Press to turn off scheduled charge timer.



FEATURES AND CONTROLS

DRIVER'S MAIN CONTROLS



Folding outer side view mirrors

Press to fold/unfold mirrors.
Press the lock or unlock button on the smart key in AUTO position, and the mirrors will be folded or unfolded.

Outer side view mirror

- Press the L or R button.
- Adjust the mirror by using the directional switch.

Power window lock button

Disables the power window switches on the rear passenger doors.

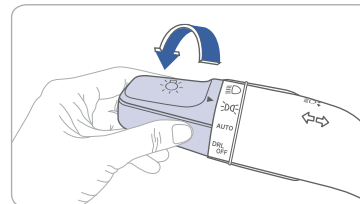
Door lock

Locks/unlocks all doors.

Window switches

- Front doors power window switches.
- Rear doors power window switches.

HEADLIGHTS



Headlights on



Parking lights on



Auto headlights on

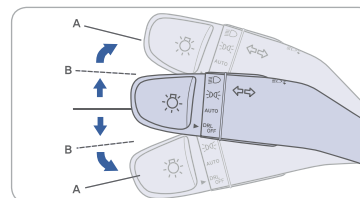


DRL off

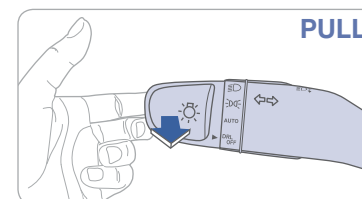
Headlight Delay

Headlights may stay on for 15 seconds after exiting and locking vehicle. Press the lock button on the smart key twice to turn the headlights off.

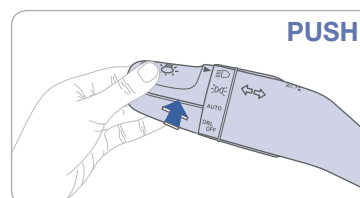
Turn signals and lane change signals



Flashing headlights



High beams



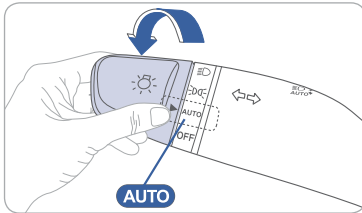
NOTE: To turn off the high beam, pull the lever towards you.



FEATURES AND CONTROLS



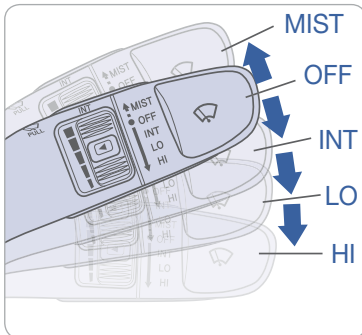
DYNAMIC BENDING LIGHT (DBL)



DBL uses the steering angle and vehicle speed to help keep your field of vision wide by swiveling and leveling the headlamp.

- To turn DBL on, turn the knob to the AUTO position when the vehicle is in the ready (🚗) mode.
- To turn DBL off, turn the knob back to the former position.

WIPERS AND WASHER



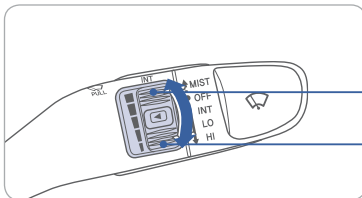
MIST - Single wipe

OFF - Off

INT - Intermittent wipe

LO - Low wiper speed

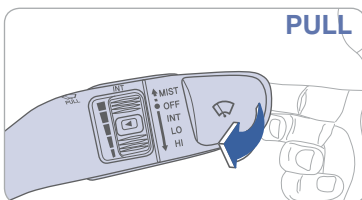
HI - High wiper speed



Intermittent wipe time adjustment
Move the speed control switch

Fast wiper speed

Slow wiper speed

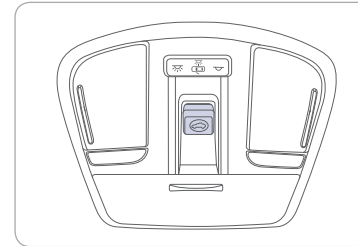


PULL

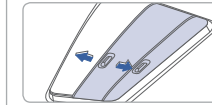
Windshield Washer

Pull the lever gently towards you to spray washer fluid on the windshield and to run the wipers 1-3 cycles.

SUNROOF

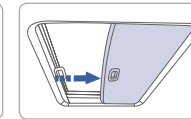
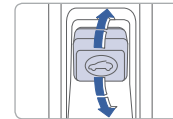


Sunshade



The sunshade will open automatically with the sunroof when the glass panel moves.

Sliding the Sunroof



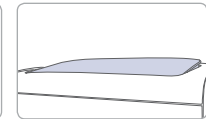
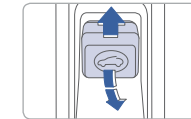
To open

Press the switch backward past the detent to open completely.

To close

Press the switch forward past the detent to close completely.

Tilting the Sunroof



To tilt

Press the switch up.

To close

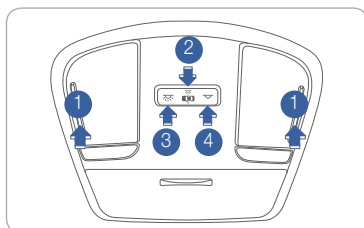
Pull the switch forward.



FEATURES AND CONTROLS



INTERIOR LIGHTS



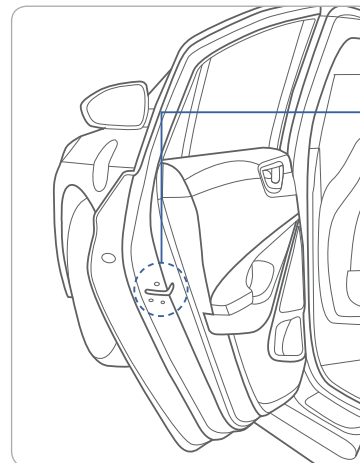
Front map lamp ①
Push the switch to turn the map lamp on or off.

Front door lamp () ②
Lights will turn on when any door is open.

Front door lamp () ③
Push the switch to turn the room lamp on.

Front room lamp () ④
Push the switch to turn the room lamp off.

CHILD-PROTECTOR REAR DOOR LOCK

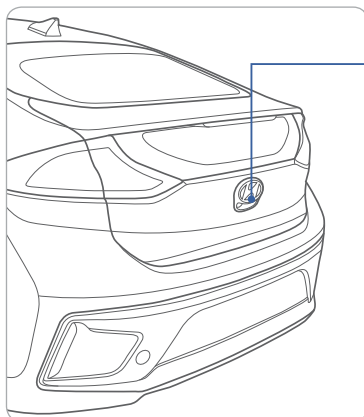


Lock
Insert a screwdriver into the hole and turn it to the lock position.



Unlock
Insert a screwdriver into the hole and turn it clockwise to the unlock position.

LIFTGATE OPENING

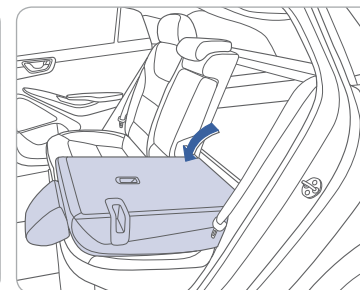
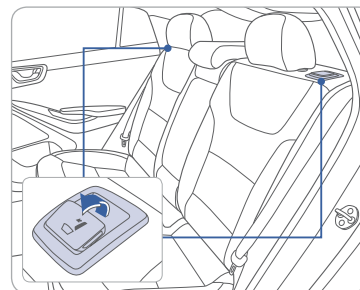


Press to open.
Smart key needs to be within the range.



Press and hold.

REAR SEAT FOLDING

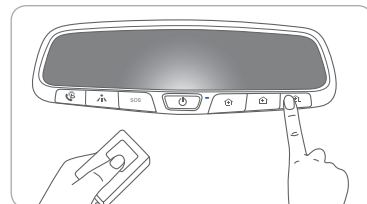
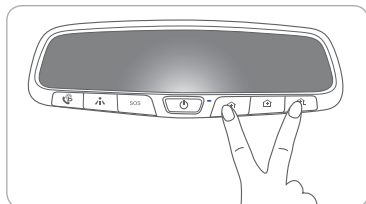




FEATURES AND CONTROLS



HOMELINK WIRELESS CONTROL SYSTEM



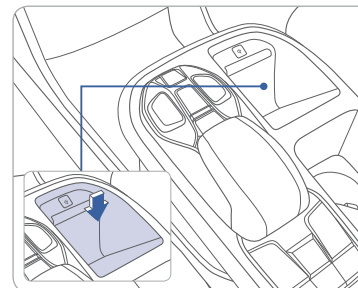
Standard Programming

To train most devices, follow these instructions:

1. For the first-time programming, press and hold the two outside buttons, HomeLink® Channel 1 and Channel 3 buttons, until the indicator light begins to flash (after 10 seconds). Release both buttons. Do not hold the buttons for over 20 seconds.
2. Position the end of your hand-held transmitter 1-3in. (2-8cm) away from the HomeLink® buttons while keeping the indicator light in view.
3. Simultaneously press and hold both the HomeLink® and the hand-held transmitter button. DO NOT release the buttons until step 4 has been completed.
4. While continuing to hold the buttons, the red indicator Status LED will flash slowly and then rapidly after HomeLink® successfully trains to the frequency signal from the hand-held transmitter. Release both buttons.

For more detailed information, please refer to your Owner's Manual, or visit www.homelink.com or call (800) 355-3515.

WIRELESS CELLULAR PHONE CHARGING SYSTEM



There is a wireless cellular phone charging system in front of the cup holders. The system operates with all doors closed, and the Engine Start/Stop button in the ACC/ON/START position. Wireless charging system can be disabled in the instrument cluster settings menu.

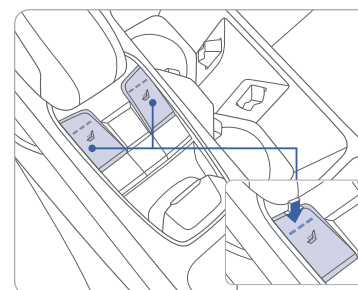
NOTE:

The wireless cellular phone charging system supports only the Qi-enabled cellular phones (Qi).

NOTE: Do not place any metallic items such as coins, keys on the charger. Avoid placing credit cards on the charger as they may be damaged by the magnetic field.

The charging area may be warm while using wireless charging.

SEAT WARMER (Front seat)



Each time you push the button, the setting is changed as follows:

OFF → HIGH → MIDDLE → LOW

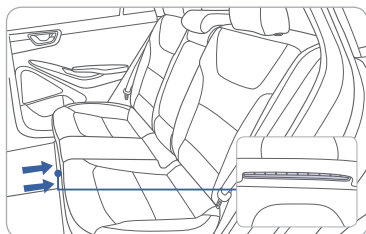
If you want to turn it off immediately, press and hold the button.



FEATURES AND CONTROLS



HIGH VOLTAGE BATTERY COOLING DUCT

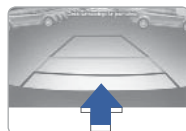


The high voltage battery cooling duct is located at the bottom center of the rear seats.

NOTE:

Do not obstruct the air intake with any other objects.

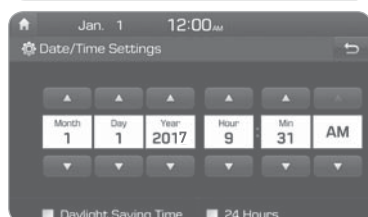
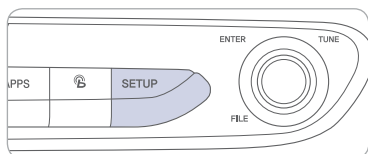
REAR VIEW CAMERA



When the gear position is selected into R (Reverse), rear view camera displays the area behind the vehicle.

CLOCK ADJUSTMENT

With Audio



1. Press the SETUP button on the audio head unit.
2. Select Date/Time.
3. Select the desired items.

Date/Time

If you tap any value, you can directly enter the number in the screen.

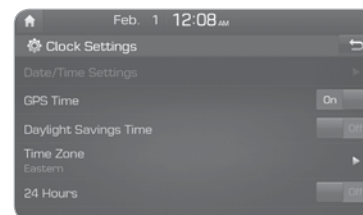
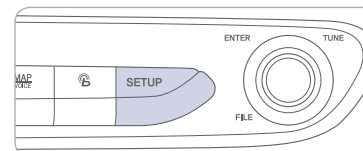
24 Hours

The time display is set in 24-hour format.

Daylight Saving Time

The daylight saving time(DST) is applied.

With Navigation



1. Press the SETUP button on the navigation head unit.
2. Select Clock.
3. Select the desired items.

GPS time

Displays time according to the received GNSS(Global Navigation Satellite System) time.

Daylight Saving Time

The daylight saving time(DST) is applied.

24 Hours

The time display is set in 24-hour format.

INSTRUMENT CLUSTER



- 1 ECO guide
- 2 Speedometer
- 3 Warning and indicator lights
- 4 LCD display (including Trip computer)
- 5 Battery SOC (State of Charge) gauge

WARNINGS AND INDICATORS

Ready indicator	Service warning light	Power down warning light
Charging indicator	High voltage battery low level warning light	Air bag warning light
Seat belt warning light	Parking brake & brake fluid warning light	EPB Electric Parking Brake (EPB) warning light
Anti-lock Brake System (ABS) warning light	Electronic Brake force Distribution (EBD) System warning light	Electric Power Steering (EPS) warning light
Charging system warning light (for 12-volt battery)	TPMS Malfunction / Low tire pressure warning light	AUTO HOLD AUTO HOLD indicator
Autonomous Emergency Braking (AEB) warning light	Lane Departure Warning System (LDWS) Indicator	LED headlamp warning light
Master warning light	Electronic Stability Control (ESC) Indicator Light	Electronic Stability Control (ESC) OFF indicator light
AFLS Adaptive Front Lighting System (AFLS) warning light	Immobilizer indicator	Turn signal indicator light
High beam indicator light	Light ON indicator light	CRUISE Cruise indicator
SET Cruise SET indicator	SPORT SPORT mode indicator	ECO ECO mode indicator



FEATURES AND CONTROLS



Main indicators in cluster for Electric Vehicle



Ready indicator

When the vehicle is ready to be driven, this indicator is illuminated.
When the ready indicator goes off or blinks, we recommend the vehicle be checked by an authorized HYUNDAI dealer.



Service warning light

If a problem with the electric vehicle control system occurs, the service warning light will illuminate.
We recommend the vehicle be checked by an authorized HYUNDAI dealer.



Power down warning light

When the vehicle power should be limited for the safety of the electric vehicle, this warning light illuminates.
Charge the battery immediately when the high voltage battery level is not enough.



Charging indicator

This indicator shows the charging status of the high voltage battery.

- When charging, the indicator illuminates in red. The approximate charge time will be displayed on the dash after a few minutes.
- When charging is completed, the indicator illuminates in green.

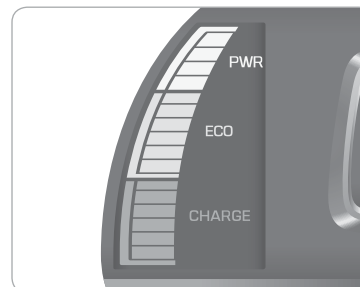


High voltage battery low level warning light

This warning light illuminates when the high voltage battery level is low.
When the warning light turns ON, charge the battery immediately.

NOTE: DC Quick charge session is time limited and may not reach maximum charge in one session depending on initial battery % SOC. The maximum charge possible in Ioniq Electric is 94% SOC on a DC Quick charger which will show a slightly lower range than with Level-1 and 2 chargers with maximum possible charge to 100% SOC.

ECO GUIDE



The ECO guide shows the energy consumption rate of the vehicle and the charge/discharge status of the regenerative brakes.

POWER

It shows the energy consumption rate of the vehicle when driving uphill or accelerating.

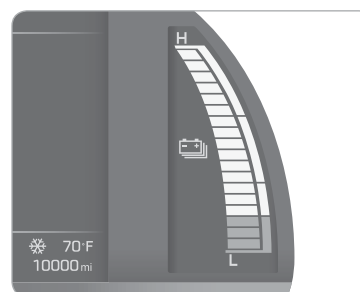
ECO

It shows the energy consumption rate during normal driving condition.

CHARGE

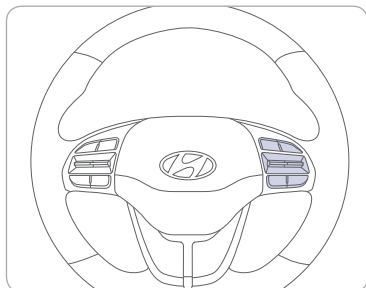
It shows the charging status of the battery when it is being charged by the regenerative brakes (decelerating or driving on a downhill road).

HIGH VOLTAGE BATTERY SOC (STATE OF CHARGE) GAUGE



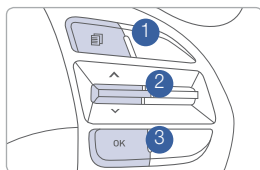
The SOC gauge shows the charging status of the high voltage battery. “L(Low)” position on the indicator indicates that there is not enough energy in the high voltage battery. “H(High)” position indicates that the driving battery is fully charged. When there are 2~3 gauge bars (near the “L(Low)” area) on the gauge, the warning light turns ON and, the vehicle can drive an additional 12~18 miles depending on the driving condition. Charging is required.

LCD DISPLAY CONTROL

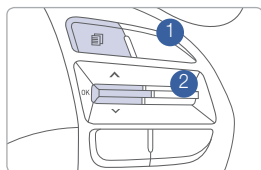


- 1 : MODE button for changing modes
- 2 : MOVE switch for changing items
- 3 : SELECT / RESET button for setting or resetting the selected item

Type A



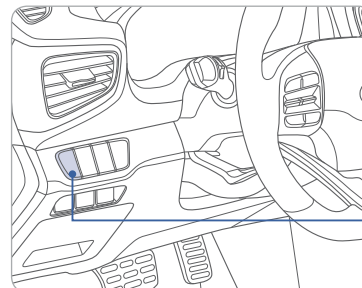
Type B



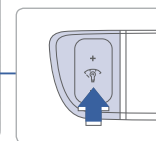
LCD DISPLAY MODES

Modes	Symbol	Explanation
Trip Computer		This mode displays driving information such as the tripmeter, fuel economy, etc.
Turn By Turn (TBT) (if equipped)		This mode displays the state of the navigation.
Assist		<ul style="list-style-type: none"> This mode displays the state of the Advanced Smart Cruise Control (ASCC) and Lane Departure Warning System (LDWS). This mode displays information related to Tire Pressure.
User Settings		In this mode, you can change settings of the doors, lamps, etc.
Warning		This mode displays warning messages related to the Blind Spot Detection system, etc.

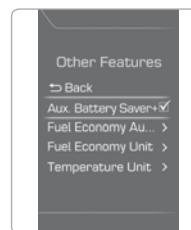
INSTRUMENT PANEL ILLUMINATION



Press the illumination control button to adjust the instrument cluster illumination brightness.



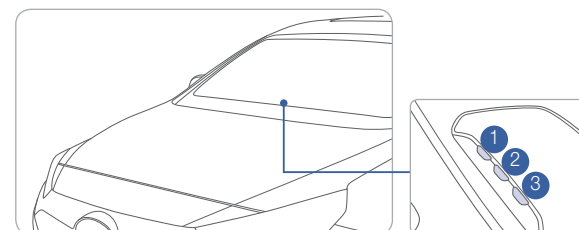
AUX. BATTERY SAVER+



The Aux. Battery Saver+ function monitors the charging status of the 12 V auxiliary battery. If the auxiliary battery level is low, the main high voltage battery charges the auxiliary battery. The default setting for Aux. Battery Saver+ is ON. The driver may cancel the function. Go to 'User Settings → Other Features → Aux. Battery Saver+'.



The message is displayed if the Aux. Battery Saver+ function was activated.



When the function is activating the third Charging Indicator Lamp will blink.

NOTE:

Do not touch the high voltage electric wire (orange), connector, and all electric components and devices when the function is activating.

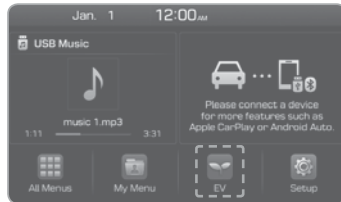


FEATURES AND CONTROLS

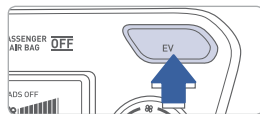
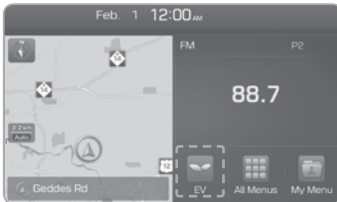


ELECTRIC VEHICLE SYSTEM MODES

Type A



Type B

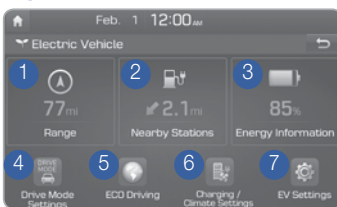


Press the EV menu at the AVN home screen or the EV button on the airconditioning button panel to enter the EV mode.

Type A

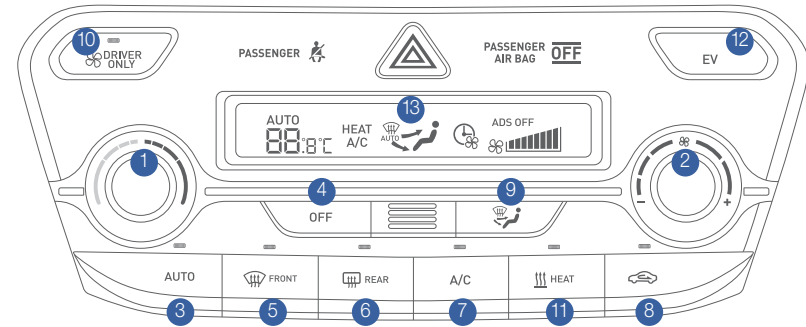


Type B



- 1 Range : You can check reachable areas, risky areas and unreachable areas.(type B only)
- 2 Nearby stations : Searches for every electric charging station of current location.
- 3 Energy information : Displays battery information and electricity use.
- 4 Drive mode settings : Climate Control, Coast Energy Regeneration, and Maximum Speed Limit can be set for three different drive modes.
- 5 ECO driving : ECO Level information and ECO Driving history are displayed.
- 6 Charging/Climate settings : A departure time and climate temperature can be set so battery charging and climate temperature adjustment are automatically completed before the set departure time.
- 7 EV settings : You can change the settings for charging current.
(for charging current, EV warnings, and drivable routes : type B)

AUTOMATIC CLIMATE CONTROL



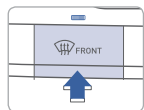
- | | |
|-----------------------------------|---------------------------------------|
| 1 Temperature control knob | 8 Air intake control button |
| 2 Fan speed control knob | 9 Mode selection button |
| 3 AUTO (automatic control) button | 10 Driver only button |
| 4 OFF button | 11 HEAT button |
| 5 Front windshield defrost button | 12 EV button |
| 6 Rear window defrost button | 13 Climate control information screen |
| 7 Air conditioning button | |



FEATURES AND CONTROLS



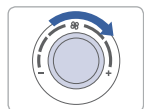
DEFOGGING/DEFROSTING



1. Press the front windshield defrost control button.



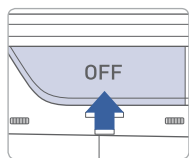
2. Set the temperature control to the warmest setting.



3. Set the fan speed to the highest setting.

NOTE: To reduce the tendency of the glass fogging and also to improve visibility, keep the interior surface of the windshield clean by wiping it with a clean cloth and glass cleaner. In addition, select air intake control to the outside (fresh) air position whenever possible while operating the vehicle.

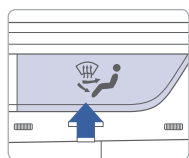
SYSTEM OFF



Pressing the OFF button will place the system in the OFF mode.

- Blower will turn off.
- Outside (fresh) air position will be selected.
- Vented air will be at last set temperature.

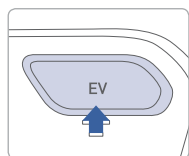
MODE SELECTION



Changes the direction of the air flow as follow.

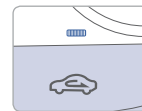


EV MODE

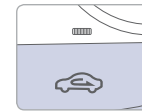


Push the EV button to enter the EV mode on the AVN screen. The EV mode has 6 or 7 menus such as Nearby Stations, Energy Information, Drive Mode, ECO driving, etc.

AIR INTAKE CONTROL

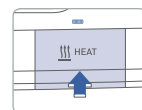


Recirculated air position



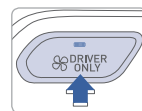
Outside (fresh) air position

HEAT BUTTON



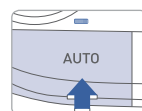
Push the HEAT button to turn the heater on. Push the button again to turn the heater off.

DRIVER ONLY



If you press the DRIVER ONLY button, cold air mostly blows in the direction of the driver's seat.

AUTOMATIC HEATING / AIR CONDITIONING



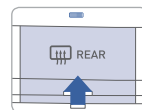
1. Press the AUTO button.



2. Set the temperature control to the desired setting.

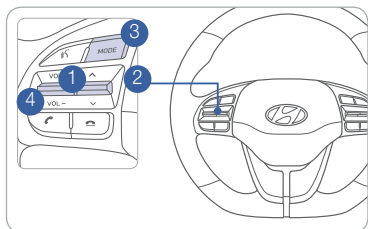
Controls the modes, fan speeds, air intake and air-conditioning automatically.

REAR WINDOW DEFROSTER



Press to activate/deactivate the rear window defroster.

STEERING WHEEL AUDIO CONTROL



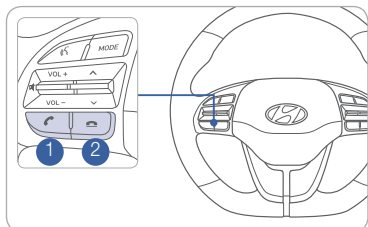
- 1 **VOLUME (VOL + / -)**
Increases or decreases the volume.
- 2 **SEEK / PRESET (▲/▼)**
Changes station.
- 3 **MODE**
Changes the audio source.
- 4 **MUTE (🔇)**
Mute the sound.

Bluetooth® PHONE CALL OPERATIONAL TIPS

In the following situations you or the other party may have difficulty hearing each other:

1. Keep the Bluetooth® volume to a low level. High level volume may result in distortion and echo.
2. When driving on a rough road, high speeds and/or with the window open.
3. When the air conditioning vents are facing the microphone and/or when the air conditioning fan is at the max speed.

Steering wheel bluetooth® control



- 1 **CALL**
Places and transfers calls.
- 2 **END**
Ends calls or cancels functions.

To Answer a Call:

- Press the button on the steering wheel.

To Reject a Call:

- Press the button on the steering wheel.

To Adjust Ring Volume:

- Use the VOLUME buttons on the steering wheel.

To Transfer a Call to the Phone

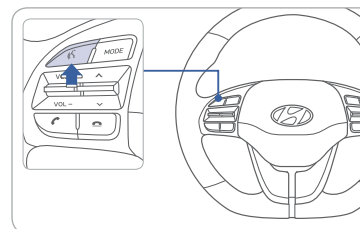
(Private call on handset – do not use while driving):

- Press and hold the button on the steering wheel until the audio system transfers a call to the phone.

To Finish a Call:

- Press the button on the steering wheel.

Making a call using voice recognition:



Press button on the steering wheel control to activate voice recognition.

Press and hold button to end voice recognition.

Calling by Name:

1. Press the button.
2. Say the following command:
 - “Call <John Smith>”: Connects the call to John.
 - “Call <John Smith> on <on Mobile / at Work / at Home / on Other>”: Connects the call to John’s Mobile, Work, Home, or Other phone number.

Dialing by Number:

1. Press the button.
2. Say “Dial Number.”
3. Say desired phone number. For complete list of commands, refer to your Owner’s Manual.

NOTE: Android Auto and Apple CarPlay are also available.



MULTIMEDIA

VOICE RECOGNITION TIPS

Your vehicle is equipped with Voice Recognition technology which allows drivers to operate their phones without having to take their eyes off the road to minimize distractions.

Voice recognition performance may be affected if driving with windows and sun roof open; when the heating-cooling system is on; when passing in a tunnel or when driving on rugged and uneven roads.

Quick reference on using voice commands

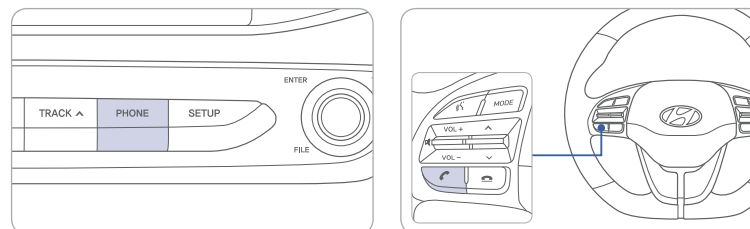
To start voice command, press the  key, the following commands are available:

Command	Function
Call	Displays downloaded Contacts.
Call <Name>	Calls <Name> saved in Contacts.
Dial Number	Displays a screen where you can say a phone number to dial.
Dial <Phone #>	You can directly say the number to call. ex) Dial 111 555 1234
Redial	Directly calls at the number that you last dialed.
Call History	Displays your Call History.

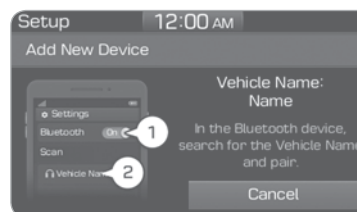


BLUETOOTH® PHONE OPERATION

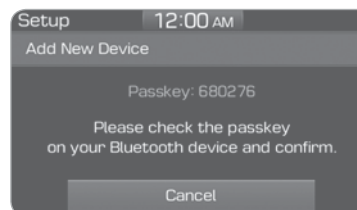
Phone setup (pairing phone) with Audio



1. Press the PHONE button in the head unit or CALL button in the steering wheel remote control.



2. Search for the device name as displayed on your mobile phone and pair.



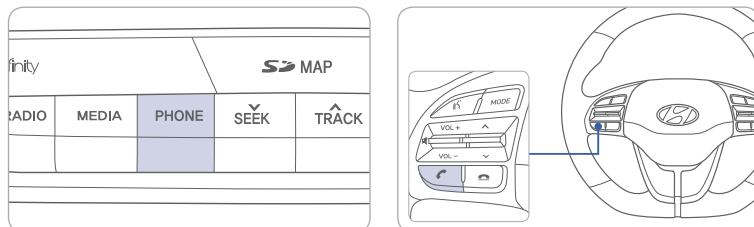
3. Confirm the 6-digit passkey displayed on the audio screen and the Bluetooth device are identical.

4. Press OK in your Bluetooth device.

5. Pairing is complete.

NOTE: Vehicle must be parked to complete pairing process.

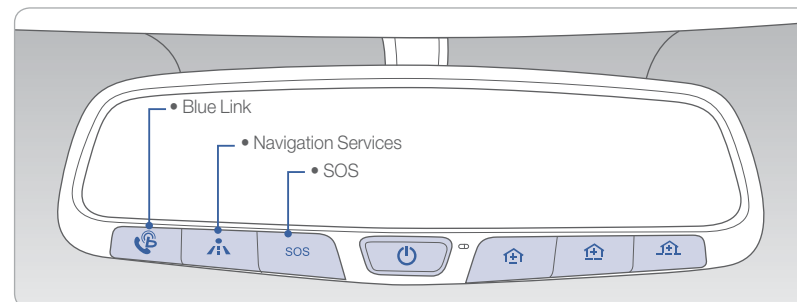
Phone setup (pairing phone) with Navigation



1. Press the PHONE button in the head unit or CALL button in the steering wheel remote control.
2. Pair your car after your mobile phone detects the Bluetooth device.
3. Enter the passkey or accept the authorization popup.
4. Connect Bluetooth.

NOTE: Vehicle must be parked to complete pairing process.

BLUE LINK TELEMATICS SYSTEM



Blue Link subscription is required. To enroll, please visit your dealership or MyHyundai.com.

Press the  button to access the voice-response menu of services.

- You can say:

- Service Link
- Roadside Assistance
- Blue Link Account Services
- Help
- Cancel

For vehicles equipped with factory-installed navigation, press the  button for Destination Voice Search Powered by Google™.

Press the **SOS** button for SOS Emergency Assistance.

Visit HyundaiBlueLink.com for more information or refer to your Blue Link User's Manual for detailed information on system operation.

For immediate assistance with subscription services, please call 1-855-2BLUELINK (1-855-225-8354).

Google™ is a registered trademark of Google, Inc.



MyHyundai with Blue Link App



You can download the MyHyundai with Blue Link app to your compatible smart phone from the following sites:

- iPhone® — Apple® App Store
- Android™ — Google Play™

Visit HyundaiBlueLink.com FAQs to see a list of compatible devices.



Scan to learn more about the MyHyundai mobile app and Remote features

Remote Climate Control

Remote Climate Control* enables you to remotely enable climate control and turn on the front window defroster, ensuring a warm or cool car is ready to go when you are.

- To use this feature, you must have a Blue Link Personal Identification Number (PIN). To create or change your PIN, log in to www.MyHyundai.com.

Remember:

- Remote Start will automatically shut off after 15 minutes or after selected engine timer runs out.
- To continue to operate the vehicle, the proximity key must be inside the vehicle with the driver, prior to pressing the brake and being able to move the gearshift from the P (Park) position.

NOTE: Remote Climate Control is not available on all models. Remote Climate Control is only available for Push Start equipped vehicle with an Automatic Transmission. Remote Climate Control with Climate Control additionally requires Fully Automatic Temperature Control.

Preconditions:

- Ignition is OFF
- Alarm is armed (i.e., vehicle locked by key fob Remote Door Lock)
- Gearshift level is in the P (Park) position
- Brake pedal is not depressed
- Engine hood is securely closed
- All the doors are closed and locked
- The tailgate or trunk lid is closed
- The security / panic system is not activated
- The proximity key is not inside the vehicle
- The battery power is not low
- Vehicle is located in an open area
- It has been less than 4 days since last vehicle ignition off
- Vehicle located in area with good cell reception

Remote Climate Control will terminate:

- After 15 minutes or after selected engine timer runs out
- Brake is pressed without the proximity key inside the vehicle
- Alarm is triggered without the proximity key inside the vehicle
- Door / trunk is opened from inside the vehicle

Notice: Laws in some communities may restrict the use of the features that remotely start the engine. For example, some laws may require a person using the remote start feature to have the vehicle in view when doing so, or limit the length of time a vehicle engine may idle. Please check local and state regulations for any requirements and restrictions on remote starting of vehicles and engine idling time.

WARNING!

Do not remote start vehicle in an enclosed environment (i.e., closed garage). Prolonged operation of a motor vehicle in an enclosed environment can cause a harmful build-up of carbon monoxide. Carbon monoxide is harmful to your health. Exposure to high levels of carbon monoxide can cause headaches, dizziness or in extreme cases unconsciousness and / or death. Do not leave children or animals unattended in a vehicle while using the remote start function.

CAUTION!

If the vehicle's windshield wipers are left on when the vehicle was last driven, then the wipers will turn on if the remote start function is activated. To avoid damage to the wiper blades (i.e., due to heavy ice or snow accumulated on the windshield), please always turn the vehicle's windshield wipers off when parking the vehicle.



MULTIMEDIA

NAVIGATION

Basic features on map screen



- 1 Place button : Go to the Place menu.
- 2 Home button : Go to the Home screen.
- 3 Map button : Change the map view mode.
- 4 NAV volume button : Adjusts the volume.
- 5 Zoom in button : Zoom the map view screen in.
- 6 Map scale display : Set the zoom level automatically according to the guidance.
- 7 Zoom out button : Zoom the map view screen out.
- 8 Quick menu button : Quick and easy selection of a destination and options.
- 9 NAV button : Enter the navigation menu screen.
- 10 Map scroll mark : Touch to scroll the map.
- 11 Destination button : Quick and easy selection of a destination from the map screen.
- 12 Waypoint button : Set a waypoint to the current route.
- 13 Save button : Save frequently used address to address book.
- 14 POI button : Find a POI(Point Of Interest) around the current position.
- 15 Vehicle position mark : View the vehicle's current position on the map screen.



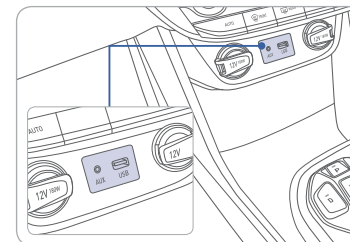
Destination search screen



Press [NAV] on the map screen and, finds a destination by using the [Destination] menu.

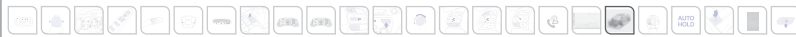
- 1 Address : Set destination by address search.
- 2 Previous destinations : Select from previously inputted addresses and POIs.
- 3 Local search : Runs Google Local Search.
- 4 POI categories : Select the desired item in the sub-categories.
- 5 Charging stations : Select the desired destinations among the searched charging stations.
- 6 Restaurants : Select the desired destination among the searched restaurants.
- 7 Emergency : Select the desired destination among the searched emergency facilities.
- 8 Address Book : Search the destination with the address book.
- 9 Phone Number : Search the destination by phone number.
- 10 Freeway Exit/Entrance : Type freeway name and exit/entrance to search by freeway exit/entrance.
- 11 Intersection : Type 1st Street name, the State, 2nd Street name.
- 12 Coordinates : You can find a destination by entering the coordinates of latitude and longitude.

AUX, USB AND iPod® PORT

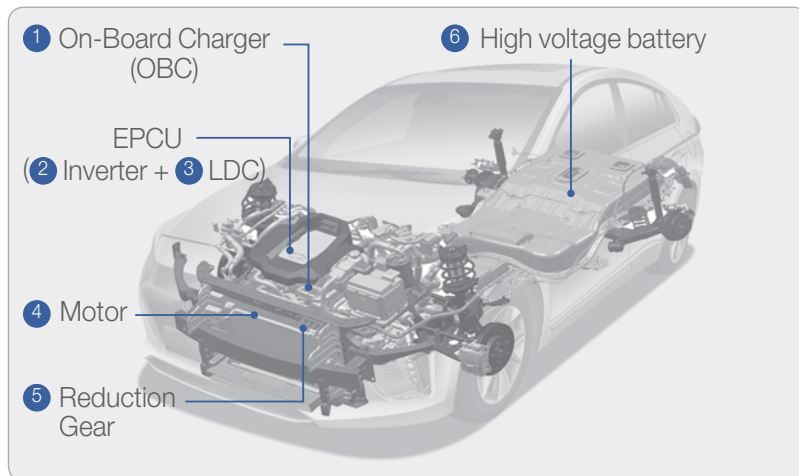


Use the input jack to connect an external audio device and listen to it through the audio system in your vehicle.

iPod® is a trademark of Apple, Inc.

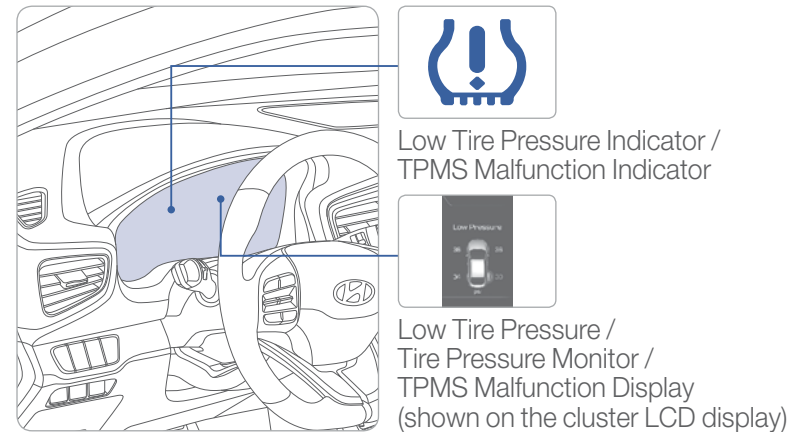


ELECTRIC VEHICLE COMPONENTS



- ① On-Board Charger (OBC)
External device (low speed) to charge the high voltage battery
- ② Inverter
Transforms direct current into alternate current to supply power to the motor, and transforms alternate current into direct current to charge the high voltage battery.
- ③ Low Voltage DC-DC Converter (LDC)
Transforms power from the high voltage battery to low voltage (12V) to supply power to the vehicle (DC-DC).
- ④ Motor
Uses electrical energy stored inside the high voltage battery to drive the vehicle (functions like an engine in a standard vehicle)
- ⑤ Reduction Gear
Delivers rotational force of the motor to the tires at appropriate speeds and torque.
- ⑥ High voltage battery (lithium-ion polymer)
Stores and supplies power necessary for the electric vehicle to operate (12V auxiliary battery provides power to the vehicle features such as lights and wipers).

TIRE PRESSURE MONITORING SYSTEM (TPMS)



LOW TIRE PRESSURE INDICATOR

Illuminates if one or more of your tire is significantly under-inflated.

TPMS MALFUNCTION INDICATOR

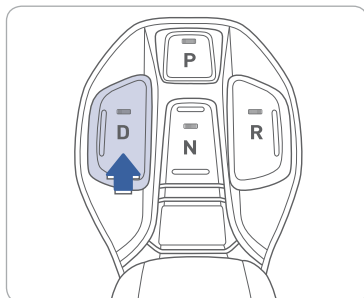
Blinks for approximately one minute, then remains illuminated when there is a malfunction with the TPMS. Inspect all Tires and adjust the Tire pressure to specification. If the lamp remains illuminated, we recommend the vehicle be checked by an authorized HYUNDAI dealer.

LOW TIRE PRESSURE / TIRE PRESSURE MONITOR / TPMS MALFUNCTION DISPLAY (LCD DISPLAY)

Tire pressures will display after driving a short distance. If a tire pressure drops lower than predetermined specification, the Low Tire Pressure Indicator (⚠) will illuminate and the LCD display will indicate Tire(s) requiring air. Recommended tire pressure is located on the placard that can be found on the driver's side door pillar.



AUTOMATIC WITH PUSH BUTTON DRIVE SELECTOR

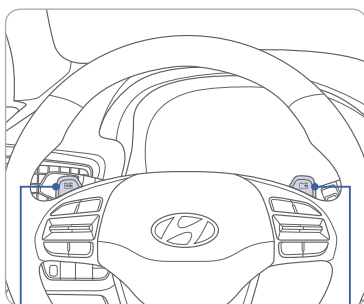


Select gear positions by pressing the shift button. The gear position is displayed in the instrument cluster.


For your safety, always depress the brake pedal while shifting to another gear.



REGENERATIVE BRAKE LEVEL CONTROL PADDLES

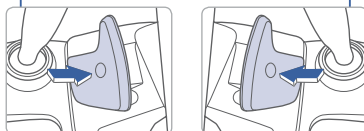


The paddle shifter is used to adjust the regenerative braking rate from 0 to 3 during decelerating or braking.

- Left side(

The paddle shifter does not operate.

- When the two paddle shifters are pulled at the same time.
- When the Cruise Control system or Advanced Cruise Control system is activated.

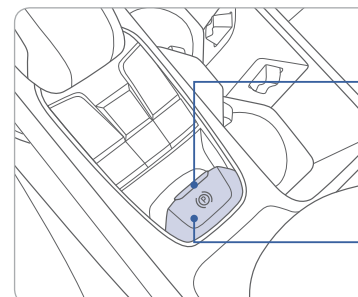


VIRTUAL ENGINE SOUND SYSTEM (VESS)

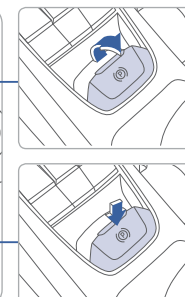
The Virtual Engine Sound System (VESS) generates engine sound for pedestrians to hear vehicle sound because there is no sound while the Electric Vehicle (EV) is operating.

- If the vehicle is moving at low speed, the VESS will operate.
- When the gear is shifted to R (Reverse), an additional warning sound will be heard.

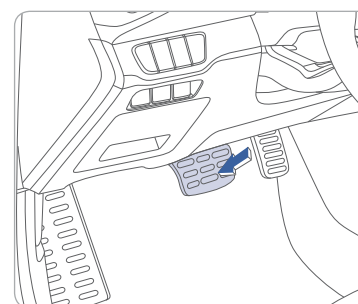
ELECTRONIC PARKING BRAKE (EPB)



Applying
Stop the vehicle then pull up the EPB switch



Releasing
Press the EPB switch while depressing the brake pedal.

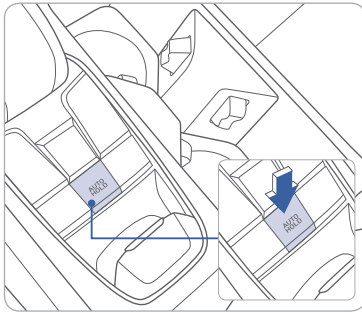


Automatic releasing

- When shifted to P: Depress the brake pedal and shift out of P to R or D.
- When shifted to N: Depress the brake pedal and shift out of N to R or D.

NOTE: If necessary, emergency braking is possible by pulling up and holding the EPB switch.

AUTO HOLD



When the vehicle reaches a stop, Auto Hold keeps the vehicle stopped even when the brake pedal is released. The brakes are released automatically when the accelerator pedal is depressed.

**AUTO
HOLD**
WHITE

1. Press the AUTO HOLD switch.

**AUTO
HOLD**
GREEN

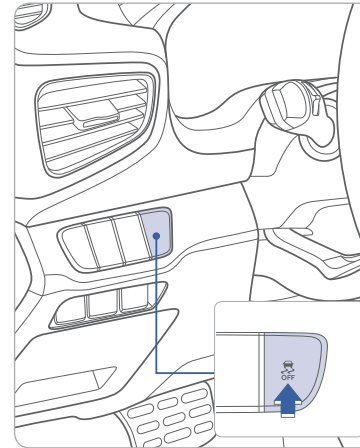
2. Stop the vehicle by depressing the brake pedal. The brake will remain engaged even if the brake pedal is released.

**AUTO
HOLD**
WHITE

3. The AUTO HOLD will be released, when the accelerator pedal is depressed with the gear in D or N.

To cancel the AUTO HOLD operation, press the AUTO HOLD switch again.

ELECTRONIC STABILITY CONTROL (ESC)



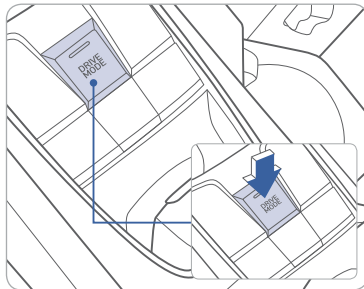
The ESC system is an electronic system designed to help the driver maintain vehicle control under adverse conditions.

ESC automatically selects the ON position when the engine is started.

To turn off Traction Control
Press the ESC OFF button shortly.

To turn off Traction & Stability Control
Press the ESC OFF button for more than 3 seconds.

DRIVE MODE INTEGRATED CONTROL SYSTEM



You can select the drive mode according to your preference or the road condition. The system initializes to the NORMAL mode (except ECO mode) after the vehicle is restarted. Each time you press the button, the drive mode is changed as follows :



Normal mode is not displayed on the instrument cluster.

NORMAL mode

Normal mode provides regular daily driving performance with some fuel efficiency.

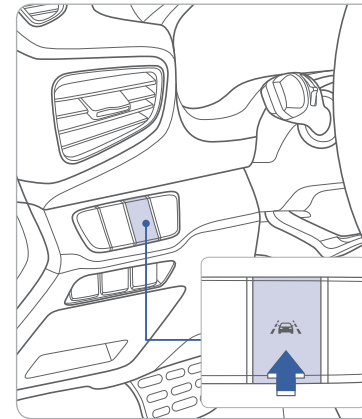
ECO mode

Eco mode system helps to improve fuel efficiency. When the ECO mode system is activated, the vehicle acceleration, gear shift points and air conditioning performance will be reduced to conserve the fuel consumption.

SPORT mode

Sport mode provides a sporty feel and may have heavier steering effort. In Sport mode, the fuel efficiency may decrease.

LANE DEPARTURE WARNING SYSTEM (LDWS)



The Lane Departure Warning System detects the lane on the road and warns the driver if the vehicle leaves the lane. The system operates when the vehicle speed is over 40 mph.

- To turn on the LDWS, press the LDWS switch.
- To turn off the LDWS, press the switch again.

BLIND SPOT DETECTION SYSTEM (BSD)



The BSD (Blind Spot Detection) system uses a radar sensor to alert the driver while driving. It monitors the rear area of the vehicle and provides information to the driver.

- 1 Blind Spot Detection
- 2 Lane Change Assist
- 3 Rear Cross Traffic Alert

- To turn on the BSD, press the BSD button (indicator illuminated).
- To turn off the BSD, press the BSD button again.

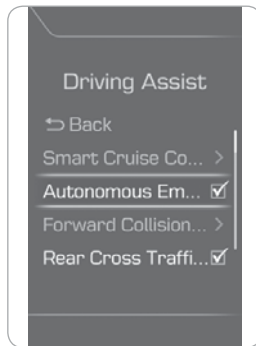
The system will activate if vehicle speed exceeds 20 mph.

Rear Cross Traffic Alert

When the vehicle is in R (Reverse), the system provides an alert if a vehicle is approaching from the sides.



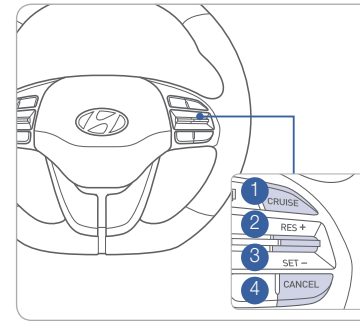
AUTONOMOUS EMERGENCY BRAKING (AEB)



The Autonomous Emergency Braking (AEB) system is designed to detect and monitor the vehicle ahead or detect a pedestrian in the roadway through radar signals and camera recognition to warn the driver that a collision is imminent, and if necessary, apply emergency braking.

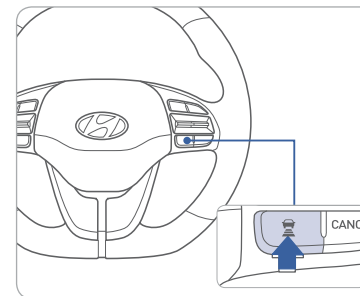
To activate the system, Select “User Settings → Driving Assist → Autonomous Emergency Braking”
The system deactivates, when the system setting is cancelled.

CRUISE CONTROL / SMART CRUISE CONTROL



The Cruise Control system allows you to program the vehicle to maintain a constant speed without depressing the accelerator pedal.

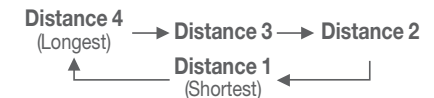
- 1 To turn on/off the cruise control.
- 2 To resume or increase the cruise control speed.
- 3 To set or decrease the cruise control speed.
- 4 To cancel the cruise control.



Setting Vehicle Distance (Smart Cruise Control only)

This system allows you to program the vehicle to maintain constant speed and distance without depressing the accelerator or brake pedal.

The vehicle to vehicle distance **1** will automatically activate when you set the cruise speed **2**. Each time the vehicle distance set button is pressed, the vehicle to vehicle distance changes as following:



If your vehicle is equipped with Advanced Smart Cruise Control and you wish to eliminate the vehicle distance function, you can change cruise control setting to a standard setting. Press the Cruise Control button on the steering wheel to turn on the Cruise Control. Then press and hold the vehicle distance button for more than 2 seconds to toggle between the Smart Cruise Control (SCC) and Cruise Control (CC) mode. Please refer to your Owner's Manual for more information.



DRIVING

ELECTRIC VEHICLE

The following tips may help benefit you to maximizing fuel economy and experience Electric vehicle driving.

Common practice:

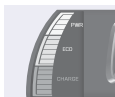
- Check tire pressure
- Roll windows up when driving
- Properly maintain your vehicle
- Turn A/C off



Set headlight switch to AUTO or OFF when not in use. This will help preserve vehicle battery charge.



Use the DRIVER ONLY button with no front passenger. This will help reduce energy consumption.



Try to drive in an eco-friendly manner and maintain ECO Mode indicator to illuminate as much as possible.

Driving suggestions to improve fuel economy:

- Drive smoothly.
- Accelerate at moderate speed.
- Try to maintain your speed with traffic to prevent unnecessary speed adjustments.
- Always maintain a safe driving distance from the vehicle in front of you so you can avoid unnecessary braking.

HYUNDAI VEHICLE OWNER PRIVACY POLICY

Your Hyundai vehicle may be equipped with technologies and services that use information collected, generated, recorded or stored by the vehicle. Hyundai has created a Vehicle Owner Privacy Policy to explain how these technologies and services collect, use, and share this information.

You may read our Vehicle Owner Privacy Policy on the Hyundaiusa.com website at <https://www.hyundaiusa.com/owner-privacy-policy.aspx>. If you would like to receive a hard copy of our Vehicle Owner Privacy Policy, please contact our Customer Connect Center at:

Hyundai Motor America
Hyundai Customer Connect Center
P.O. Box 20850
Fountain Valley, CA 92728-0850
800-633-5151 consumeraffairs@hmmausa.com

Hyundai's Customer Connect Center representatives are available Monday through Friday, between the hours of 5:00 AM and 7:00 PM PST and Saturday and Sunday between 6:30 AM and 3:00 PM PST (English). For Customer Connect Center assistance in Spanish or Korean, representatives are available Monday through Friday between 6:30 AM and 3:00 PM PST.

IONIQ CUSTOMER DELIVERY CHECKLIST

CUSTOMER NAME	DEALERSHIP NAME
SALES CONSULTANT	DATE
VIN	

BEFORE DELIVERY

- ☐ SET TIRE PRESSURE LF ____ RF ____ RR ____ LR ____
- ☐ VERIFY VEHICLE IS CLEAN, IN GOOD CONDITION, FREE OF CHIPS AND SCRATCHES - CLEAN WINDSHIELD AND BACK WINDOW
- ☐ ENSURE FLOOR MATS ARE SNAPPED INTO PLACE

Sales Consultant	Date	Sales Manager	Date
Customer			Date
Email			