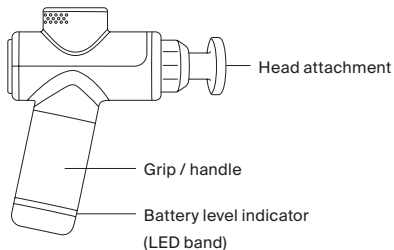


Let's
get
started

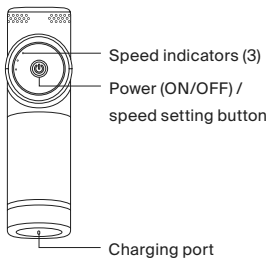


Meet your new Hypervolt Go 2

Side view



Rear view



Before you start

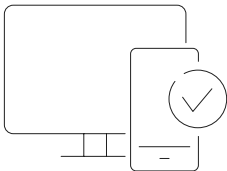
Download the Hyperice App

Get the most out of your Hypervolt Go 2, or any Hyperice device with the Hyperice App. Follow along to guided routines, track your progress, and get tips and tricks from the world's best pros.



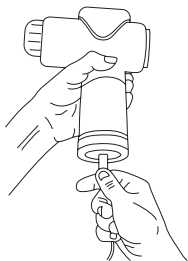
Register your device

Activate your warranty and ensure easy returns, repairs, or refunds at hyperice.com/register-product.



Charge your new Hypervolt Go 2

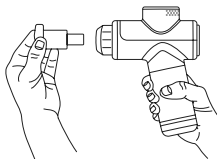
Plug in your new Hypervolt Go 2 with the provided Hyperice USB-C until fully charged. The battery will take up to four hours to full charge.



Start your session

Choosing head attachments

Choose desired head attachment and insert directly into the opening while pushing firmly.



Powering up

Turn your Hypervolt Go 2 ON by pressing the power/speed setting button. Hold for two seconds until the battery level indicator (LED band) illuminates, then release.



Adjusting speeds

Choose your desired speed (1-3) by pressing the power/speed setting button once per speed. The white lights on the back will indicate the current speed.



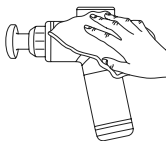
Recharging

Full charge is indicated when the LED light band on the handle remains green and fully illuminated. Only use the provided Hyperice charger.



Caring for your Hypervolt Go 2

Make sure the power is OFF and the battery charger is not attached. Use a damp, clean cloth to gently wipe your device. Store in a clean, cool, dry place, out of direct sunlight, when not in use.



We're here for you

HyperCare®

Get award-winning support from our HyperCare team – a group of specialists dedicated to your overall well-being and expert guidance on Hyperice products.



1.855.734.7224



hyperice.com



customersupport@hyperice.com

If outside of the United States, please visit hyperice.com/contact