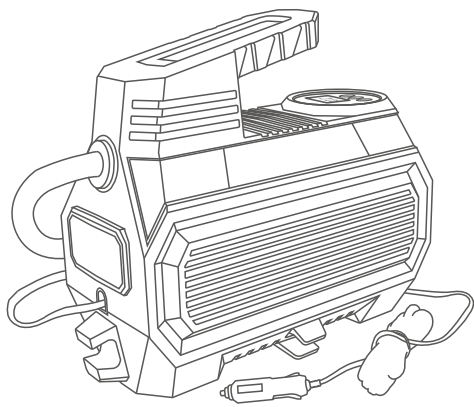
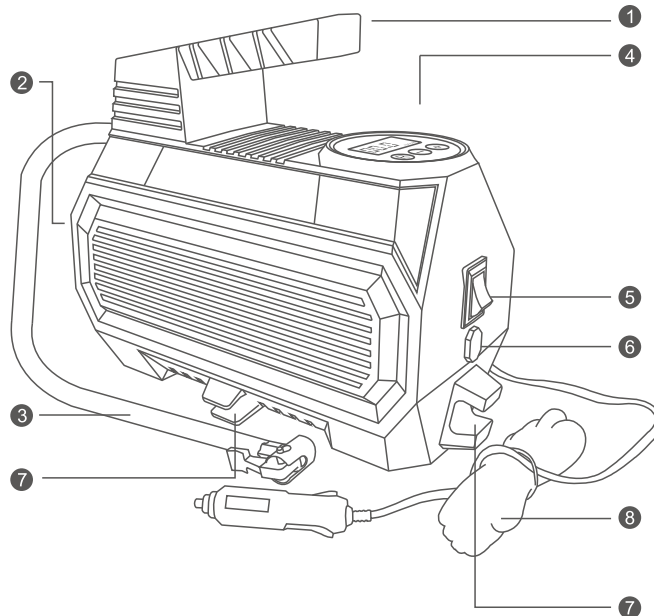


Tire Inflator



please read this manual prior to using this product

Product Description



- | | |
|--------------------|--------------------|
| ① Handle | ② LED lamp |
| ③ Air tube | ④ Pressure Gauge |
| ⑤ On/Off Switch | ⑥ LED light switch |
| ⑦ Air tube storage | ⑧ Power cord |

Note: the illustrations in the manualsuch as product, accessories, user interface and etc are schematic diagrams for reference only. The figure above shows the digital display version, there are many other configurations available. Please refer to the real object.

Included Accessories



Product Specification

Name	Tire Inflator
Size	195×85×165mm
Power	120W
Rated voltage	DC 12V

Recommend tire pressure for private cars



CAR

2.3-2.5KG/CM²



SUV

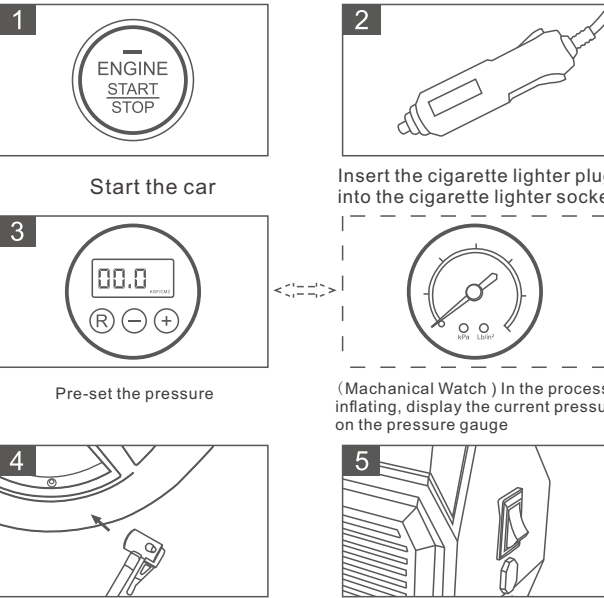
2.5KG/CM²



MPV

2.3-2.5KG/CM²

How to inflate

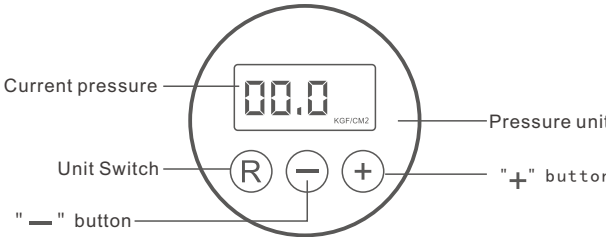


Stop Automatically

(Digital Edition) The machine will stop inflating automatically as soon as the tire pressure reach the pre-set pressure, Then turn off the switch.

Preset pressure

Press "R" to select the unit, press "+" or "-" to adjust the pressure value,After the pressure figures stops flickering, turn on the switch to start work.The machine will stop automatically once the tire pressure reaches the presetted pressure, Turn off the switch after inflating complete



Attention

- 1.Do not disassemble, repair or modify this product without authorization
- 2.Do not put it beside heat sources such as car heat rejection outlet
- 3.The normal operation of the product will make the product slightly heating which is a normal phenomenon
- 4.In order to ensure the good work of the air pump, the continous inflating time should not be too long, It needs to interval rest if long time inflation is required

Warranty Card

Please email at service@neakhmer.com with your order details below to get a one year warranty for this product

Product Name	
Order NO:	
Order Date:	

We will respond you in 48 hrs from receiving your information