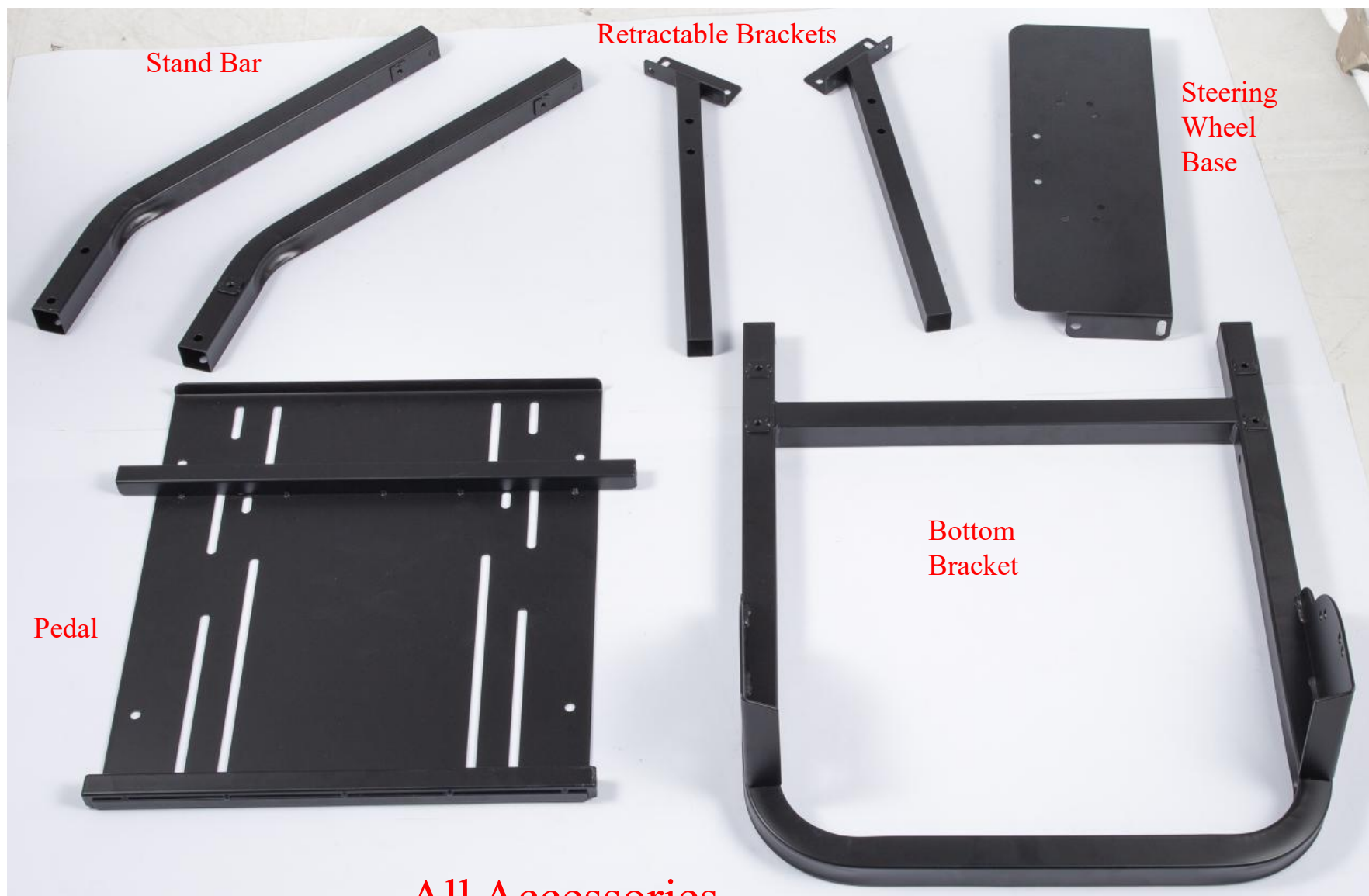




G29/G920 Gaming Wheel Stand Installation Manual



Stand Bar

Retractable Brackets

Steering
Wheel
Base

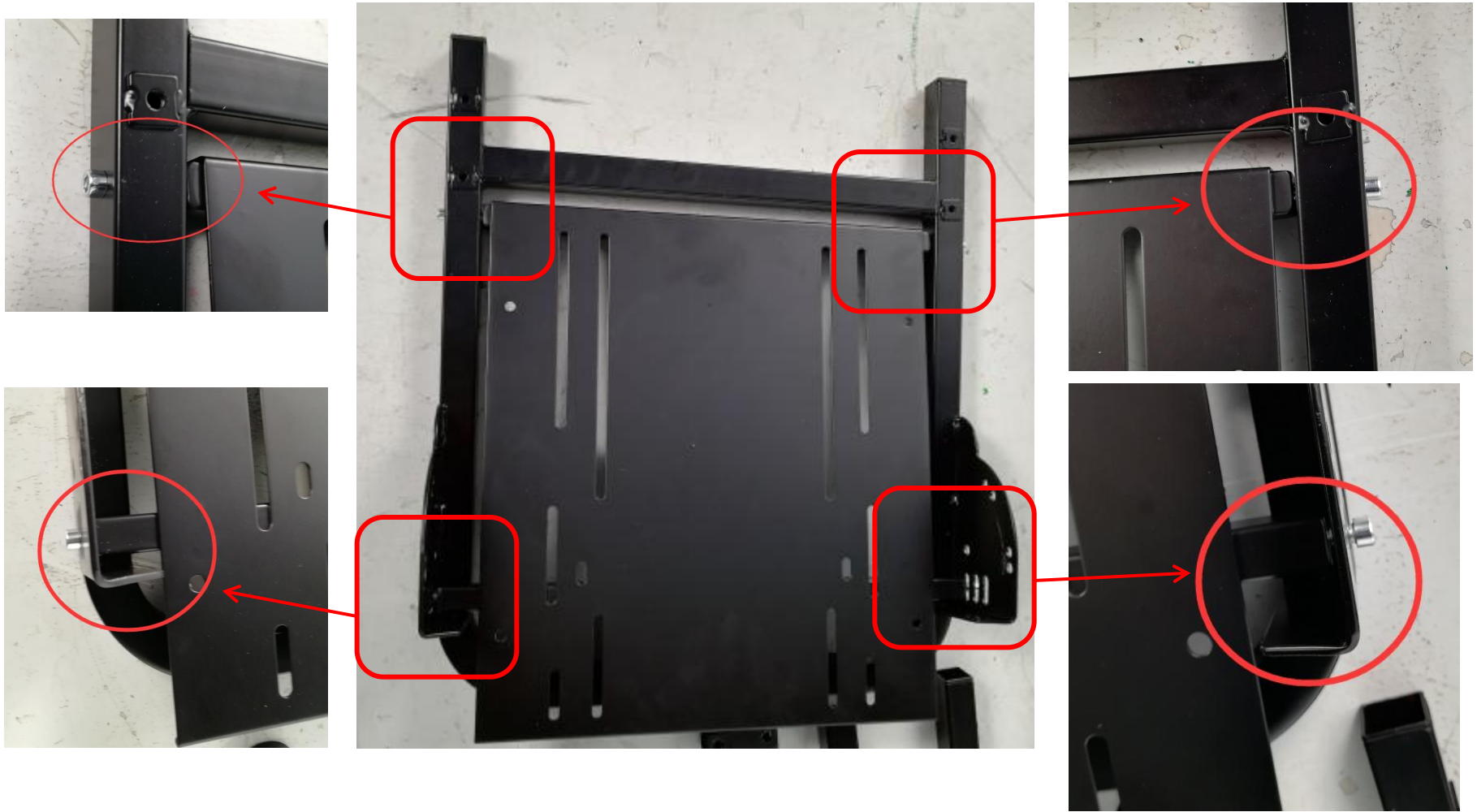
Pedal

Bottom
Bracket

All Accessories



Accessory Kit



Step 1: We need to fix the pedal on the bottom bracket with screws. **M8 56mm bolts** for the front part and **M8 36mm bolts** for the back part.



Step 2: First, fix the stand bars on the bottom of the pedal with two **M8 60mm plastic screws**. Then use two **M8 56mm screws** (for both sides) to lock the stand bars with nuts.

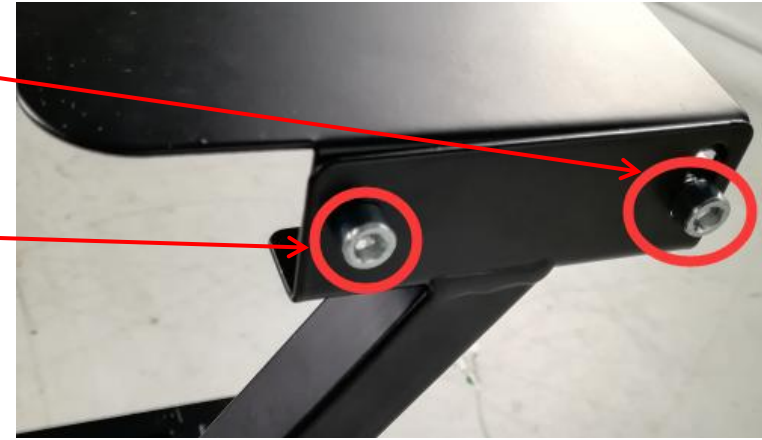
This place is where you screw the bolts in the first step.



Step 3: Fix four **M8 non-skid foot screws** on the bottom of the bracket.
The height of the **foot screws** can be adjusted according to your needs.



Step 4: Install the **retractable brackets** with **M8 34mm plastic screws**.
The height of the **retractable brackets** can be adjusted at any length.



Step 5: Install the steering wheel base on the top of the retractable brackets with four **M8 22mm screws** (two screws for each side), and then fix it with nuts.



This is our gaming wheel stand.
If you have any other questions, please contact us.

We specialize in the production of various game stands.
We are glad to provide you products with outstanding quality and proper price.