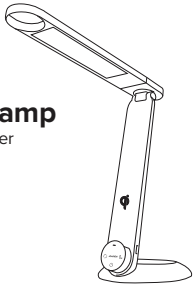


ubiolabs

illumia
LED Desk Lamp
with Wireless Charger

User Manual and
Safety Instructions



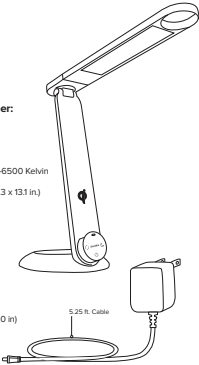
Technical Specifications

Desk Lamp with Wireless Charger:

Component: UTL1006
Input: 9V=, 2.5A
Output (Wireless): Qi (10W / 7.5W / 5W)
Output (USB-A): 5V=, 2A, 10W Max
White Light: 8W 0-650 lumens Max, 2800-6500 Kelvin
RGB Light: 1W, 6 color selections
Dimensions: 366 x 160 x 332 mm (14.4 x 6.3 x 13.1 in.)
Weight: 800 g (1.8 lb.)

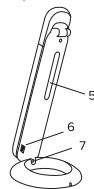
Wall Adapter:

Model: AS024-0902500U
Input: AC 100-240V, 50/60 Hz
Output: 22.5W 9V=2.5A
Dimensions: 71 x 44 x 52 mm (2.8 x 1.7 x 2.0 in.)
Weight: 130 g (4.6 oz)



Features

- 1- LED Array
- 2- Wireless Charging Surface
- 3- LED Charge Indicator
- 4- Control Center
- 5- Rear LED Array
- 6- USB-A Output
- 7- Wall Adapter Input



Your wireless charging lamp is designed to provide optimal charging for your wireless device:

- 10W Qi certified fast charging for Samsung Galaxy S6 and later, Samsung Note5 and later, Motorola, LG
- 7.5W wireless charging for iPhone 8 and later
- Compatible with Google Pixel 3/3XL, and other compatible devices.

Regulatory Information

This device complies with Part 15 of the FCC Rules. Operation is subject to the following two conditions: (1) this device may not cause harmful interference, and (2) this device must accept any interference received, including interference that may cause undesired operation.

Caution: The user is cautioned that changes or modifications not expressly approved by the party responsible for compliance could void the user's authority to operate the equipment.

Note: This equipment has been tested and found to comply with the limits for a Class B digital device, pursuant to part 15 of the FCC Rules. These limits are designed to provide reasonable protection against harmful interference in a residential installation. This equipment generates, uses, and can radiate radio frequency energy and, if not installed and used in accordance with the instructions, may cause harmful interference to radio communications. However, there is no guarantee that interference will not occur in a particular installation. If this equipment does cause harmful interference to radio or television reception, which can be determined by turning the equipment off and on, the user is encouraged to try to correct the interference by one or more of the following measures:

- Reorient or relocate the receiving antenna.
- Increase the separation between the equipment and receiver.
- Connect the equipment into an outlet on a circuit different from that to which the receiver is connected.
- Consult the dealer or an experienced radio/TV technician for help.

This device complies with Industry Canada licence-exempt RSS (standard). Operation is subject to the following two conditions: (1) This device may not cause interference, and (2) This device must accept any interference, including interference that may cause undesired operation of the device.

The device has been evaluated to meet general RF exposure requirement. To maintain compliance with RSS302 — Radio Frequency (RF) Exposure guidelines, this equipment should be installed and operated with a minimum distance of 20cm between the radiator and your body.

Le présent appareil est conforme aux CNR d'Industrie Canada applicables aux appareils radio exempts de licence. L'exploitation est autorisée aux deux conditions suivantes: (1) l'appareil ne doit pas produire de brouillage, et (2) l'utilisateur de l'appareil doit accepter tout brouillage radioélectrique subi, même si le brouillage est susceptible d'en compromettre le fonctionnement.

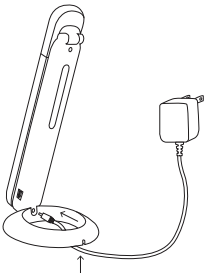
Cet équipement est conforme aux limites d'exposition de rayonnement d'IC RSS102 déterminées pour un environnement non contrôlé. Cet équipement devrait être installé et exploité avec la distance minimum 20 cm entre le radiateur et votre corps.

Important Safety Instructions

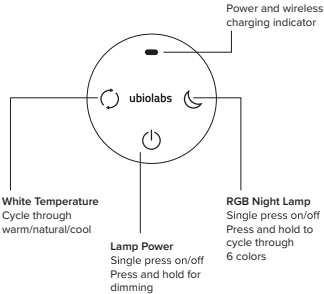
1. Read these instructions.
2. Keep these instructions.
3. Read all warnings.
4. Follow all instructions.
5. Do not use this apparatus near water.
6. Clean only with a dry cloth.
7. Do not block any ventilation openings. Install in accordance with the manufacturer's instructions.
8. Do not install near any heat sources such as radiators, heat registers, stoves, or other apparatus (including amplifiers) that produce heat.
9. Protect the power cord from being walked on or pinched particularly at plugs, convenience receptacles, and the point where they exit from the apparatus.
10. Only use attachments/accessories specified by the manufacturer.
11. Using this apparatus during lightning storms or other unusual for long periods of time.
12. Refer all servicing to qualified personnel. Servicing is required when the apparatus has been damaged in any way, such as external power supply power supply cord or plug is damaged, liquid has been spilled on objects have fallen into the apparatus, the apparatus has been exposed to rain or moisture, does not operate normally, or has been dropped.
13. To reduce the risk of fire or electrical shock, do NOT expose this product to rain, liquids or moisture.
14. Do NOT expose this product to dripping or splashing, and do not place objects filled with liquids, such as vases, on or near the product.
15. Keep the product away from fire and heat sources. Do NOT place naked flame sources, such as lighted candles, on or near the product.
16. Do NOT make unauthorized alterations to this product.
17. Do NOT use in vehicles or boats.
18. Use this product only with the power supply provided.
19. Where the main plug or an appliance coupler is used as the disconnect device, the disconnect device shall remain readily operable.
20. Due to ventilation requirements, does not recommend placing the product in a confined space such as in a wall cavity or in an enclosed cabinet.
21. Do not place or install the bracket or product near any heat sources, such as fireplaces, radiators, heat registers or other apparatus (including amplifiers) that produce heat.
22. The product label is located on the bottom of the product.

IMPORTANT, RETAIN FOR FUTURE REFERENCE:
READ CAREFULLY | SAVE THESE INSTRUCTIONS

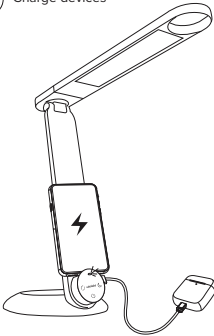
⚡ Plug in Lamp



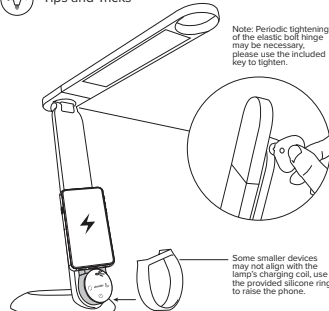
👆 Touch controls



⚡ Charge devices



🔧 Tips and Tricks



Thank you for your purchase!

Warranty

At Ubio Labs, we are dedicated to designing and manufacturing products with superior performance and 100% customer satisfaction. All of our products come with a 1-year limited warranty from date of purchase.

We are always improving our products' features and functionality. We reserve the right to change product specifications at any time without notice.

MODEL: IDL100/IDL100E

DO NOT RETURN TO THE STORE
Our customer service team is here to help.

www.ubiolabs.com | support@ubiolabs.com
1-866-642-4428 (Monday - Friday 9am - 4:30pm PST)
Ubio Labs, Inc. | 2821 Northrup Way, Suite 250 Bellevue, WA 98004