

A photograph of a modern, multi-story apartment building. The building features a light-colored facade with prominent vertical columns and multiple balconies. Each balcony is enclosed with dark metal frames and glass railings. The building has a flat roof with a dark blue or black finish. The sky is a clear, bright blue. In the foreground, the lower part of the building shows large windows and a balcony with a glass railing. The overall aesthetic is clean and contemporary.

***Kwikset***

**MULTI-FAMILY &  
LIGHT COMMERCIAL**

***Kwikset***

*Made for the world you live in.<sup>TM</sup>*

***We're the lock brand that  
works hard to understand  
the world you live in***

so that we can do everything

we can to protect it.

Our products provide

customers with the quality,

technology, durability and

style they want while

always guaranteeing the

highest level of security.



## PRODUCTS FOR RESIDENTIAL & COMMERCIAL APPLICATIONS

Kwikset's Multi-Family & Light Commercial products are created with both heavy duty residential and light commercial applications in mind, including apartment buildings, assisted living facilities, and other multi-family housing. The line offers ANSI/BHMA Grade 2 & 3 security with ADA and UL options available. Featuring SmartKey® re-key technology with BumpGuard™ protection, Kwikset's Light Commercial products offer the highest levels of quality and security.

### FEATURES:

- SmartKey® Re-key Technology with BumpGuard™ Protection
- ANSI/BHMA Grade 2 & 3 Certified Security
- Meets ADA Requirements (Delta excluded)
- Concealed Screws on Grade 2 Products
- Easy Installation
- Push Button Locking

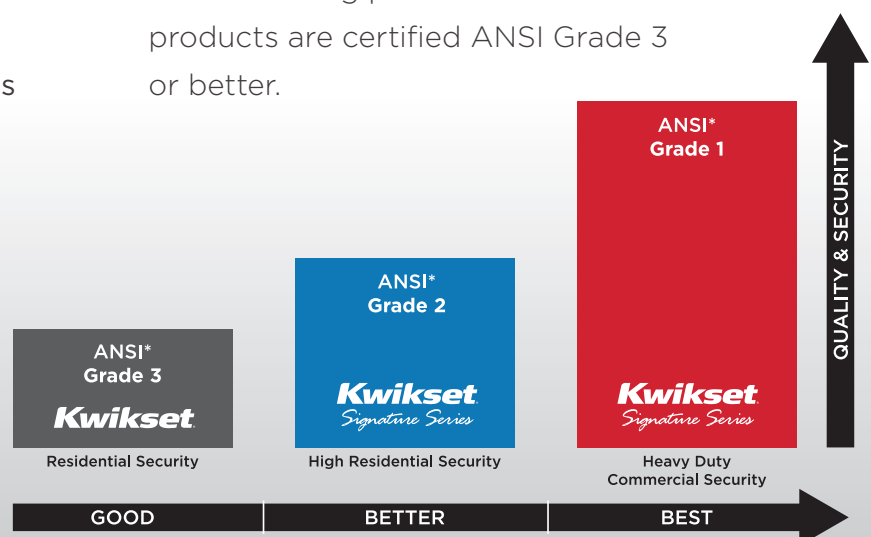
## QUALITY ASSURANCE

### ADA COMPLIANCE:

The Americans with Disabilities Act (ADA) is a federal statute designed to ensure access for individuals with disabilities. Kwikset's Multi-Family & Light Commercial products offer ADA compliance, with special features on levers and deadbolts that make exiting a room easier for individuals with disabilities.

### ANSI/BHMA

ANSI/BHMA Certification requires that products are tested and audited, leading to higher design specifications and manufacturing procedures. All of our products are certified ANSI Grade 3 or better.





# LEVERS



## KINGSTON LEVER



### Description

A smart solution for multi-family housing and other commercial spaces, the Kingston Lever offers ANSI/BHMA Grade 2 Certified Security and convenient push button functionality.

**Available Finishes:** 3, 11P, 15, 26D

### Features & Benefits

- Features SmartKey® Re-key Technology with BumpGuard™ Protection
- Traditional Pin & Tumbler Cylinder Also Available
- ADA Approved
- ANSI/BHMA Grade 2
- 3HR UL Rating
- Concealed Screws
- Push Button Locking

## CARSON LEVER



### Description

A smart solution for both residential and commercial applications, the Carson Lever offers convenient push locking with ANSI/BHMA Grade 3 certified security.

**Available Finishes:** 3, 11P, 15, 26D

### Features & Benefits

- Features SmartKey® Re-key Technology with BumpGuard™ Protection
- Traditional Pin & Tumbler Cylinder Also Available
- ADA Approved
- ANSI/BHMA Grade 3
- 3HR UL Rating
- Push Button Locking

## DELTA LEVER



### Description

A clean, streamlined design, the Delta lever fits a wide range of decorative styles, from traditional and transitional to contemporary, and offers ANSI/BHMA Grade 3 certified security.

**Available Finishes:** 3, 5, 11P, 15, 15A, 26, 26D

### Features & Benefits

- Features SmartKey® Re-key Technology with BumpGuard™ Protection
- Features Adjustable Latch to Fit All Standard Door Preparations
- ANSI/BHMA Grade 3 Security
- Non-handed Lever Design to Fit Both Right and Left-handed Doors

## BURBANK LEVER



### Description

A smart solution for both residential and commercial applications, the Carson Lever offers convenient push locking with ANSI/BHMA Grade 3 certified security.

**Available Finishes:** 3, 11P, 15, 26

### Features & Benefits

- Push Button
- ANSI/BHMA Grade 3 Certified Security
- ADA Compliant

# LEVERS



## MILAN LEVER



### Description

A smart solution for multi-family housing and other commercial spaces, the Kingston Lever offers ANSI/BHMA Grade 2 Certified Security and convenient push button functionality.

**Available Finishes:** 11P, 15, 26, 26D

### Features & Benefits

- Features SmartKey® Re-key Technology with BumpGuard™ Protection
- Traditional Pin & Tumbler Cylinder Also Available
- ADA Approved
- ANSI/BHMA Grade 2
- 3HR UL Rating
- Concealed Screws
- Push Button Locking

## HALIFAX LEVER



### Description

A smart solution for multi-family housing and other commercial spaces, the Kingston Lever offers ANSI/BHMA Grade 2 Certified Security and convenient push button functionality.

**Available Finishes:** 11P, 15, 26, 26D

### Features & Benefits

- Features SmartKey® Re-key Technology with BumpGuard™ Protection
- Traditional Pin & Tumbler Cylinder Also Available
- ADA Approved
- ANSI/BHMA Grade 2
- 3HR UL Rating
- Concealed Screws
- Push Button Locking

## LISBON LEVER



### Description

A smart solution for multi-family housing and other commercial spaces, the Kingston Lever offers ANSI/BHMA Grade 2 Certified Security and convenient push button functionality.

**Available Finishes:** 11P, 15, 26, 26D

### Features & Benefits

- Features SmartKey® Re-key Technology with BumpGuard™ Protection
- Traditional Pin & Tumbler Cylinder Also Available
- ADA Approved
- ANSI/BHMA Grade 2
- 3HR UL Rating
- Concealed Screws
- Push Button Locking

## INTERCONNECT



### Description

The perfect solution for multi-family housing, Interconnect provides quality, security and style while meeting ADA requirements and fire code ratings.

**Available Finishes:** L03, 3, 5, 11P, 15, 15A, 26, 26D

### Features & Benefits

- Features SmartKey® Re-key Technology with BumpGuard™ Protection
- ANSI/BHMA Grade 3 Security
- Meets ADA Requirements on All Lever Options
- Meets Fire Code Rating for Emergency Panic Exit
- Available with 780 or 660 Deadbolt
- Multiple knob & lever options available

# KNOBBS & DEADBOLTS

## CIRCA KNOB



### Description

Meeting ANSI/BHMA Grade 2 standards and offered in a variety of finishes, the Circa knob fits into any residential or commercial application. Features adjustable latch to fit all standard door preparations.

**Available Finishes:** 3, 11P, 15, 15A, 26, 26D

### Features & Benefits

- Features SmartKey® Re-key Technology with BumpGuard™ Protection
- ANSI/BHMA Grade 2

## KEY CONTROL™ DEADBOLT



### Description

Kwikset's Key Control™ Deadbolt is a revolutionary cost and time-saving alternative to master keying. The top concealed cylinder provides one-key control for the property manager, while the lower exposed cylinder allows unique user keys for the tenant.

**Available Finishes:** 3, 5, 11P, 15, 26D

### Features & Benefits

- Features SmartKey® Re-key Technology with BumpGuard™ Protection
  - ANSI/BHMA Grade 2
  - Maintain Key Control Throughout Tenant & Employee Turnover
  - Re-key the Lock Yourself Without Removing from the Door
- \* **Thin door kit available** - allows Key Control Deadbolt to fit on 1-3/8" doors.

## 780 DEADBOLT SERIES



### Description

The 780 Deadbolt offers premium security features, including ANSI/BHMA Grade 2 Security as well as SmartKey® Re-key Technology. Also includes removable cylinder feature on Pin & Tumbler option.

**Available Finishes:** L03, 3, 5, 11P, 15, 15A, 26, 26D

### Features & Benefits

- Featuring SmartKey® Re-key Technology with BumpGuard™ Protection
- ANSI/BHMA Grade 2 Security
- Features Adjustable Latch & Deadbolt to Fit All Standard Door Preparations
- Removable Cylinder Feature

## 660 DEADBOLT SERIES



### Description

The 660 Deadbolt provides certified Grade 3 security at an affordable price. Add to a keyed knob or lever for additional security.

**Available Finishes:** 3, 5, 11P, 15, 15A, 26, 26D

### Features & Benefits

- Features SmartKey® Re-key Technology with BumpGuard™ Protection
- Features Adjustable Latch & Deadbolt to Fit All Standard Door Preparations
- ANSI/BHMA Grade 3 Security
- One-sided Deadbolt Available

## SMARTKEY PADLOCK



### Description

The perfect solution for multi-family key management now you can use the same key to unlock tenants' apartments & padlocks for secured gates, maintenance buildings, storage areas and toolboxes.

### Features & Benefits

- Key retaining feature ensures padlock is not left unlocked and prevents accidentally locking the key inside a shed, toolbox, garage, workshop, etc.
- Rekeys in seconds
- Uses K1 keyway. Works with your Kwikset or Kwikset compatible house key.
- Great for tool boxes, storage sheds, secured gates, maintenance buildings.



THE KEY EVOLVED.

## AN INNOVATIVE PRODUCT A GREAT REVENUE GENERATOR



- Generate additional revenue by charging a monthly upgrade fee and Kevo will more than pay for itself.
- Attract long lasting tenants with this upgrade and technology.
- Low maintenance means fewer tenant headaches and less time and money wasted.
- SmartKey allows you to rekey in seconds when a new tenant signs a lease.
- Personalize your property and retain current residents while also attracting new ones.



*Polished Brass* L03

*Satin Nickel* 15

*Venetian Bronze* 11P



Touch to Open  
Convenience



No Smartphone?  
No Problem



Compatible with  
the iPhone 4S or  
Higher and Android 5.0  
(Lollipop) or higher



Your Smartphone  
is now your key



Share eKeys  
via Smartphone



works with  
**nest**



## POWERBOLT



### Description

Powerbolt innovated the keyless entry technology over 10 years ago and has stood up to the test of time. Simply enter your personalized access code for convenient keyless entry. Powerbolt is easy to install, program and use. And the motorized driven deadbolt allows for one-touch locking.

**Available Finishes:** 3, 11P, 15

### Features & Benefits

- Keyless entry at a value
- Two customizable access codes
- Motorized driven deadbolt for one-touch locking
- Installs in minutes with just a screwdriver- no hard wiring

## SMARTCODE 909



### Description

Upgrade to a more convenient, more controllable keyless entry deadbolt with SmartCode™ Signature Series. With your own personal code, you can enter your home with just a few simple pushes of a button and lock it with just one.

**Available Finishes:** 3, 11P, 15

### Features & Benefits

- SmartKey® technology - the lock you can re-key yourself in seconds in three easy steps
- Additional products are available with Home Connect technology, visit [kwikset.com/wirelesslocks](http://kwikset.com/wirelesslocks)

## CONTEMPORARY SMARTCODE 909



### Description

Add a level of security and style to your home with the SmartCode® touchpad electronic lever. Designed with a sleek style to complement your home's interior, you can lock up your home office, wine cellar or storage room and never have to worry about keys.

**Available Finishes:** 15, 11P, 26, 26D

### Features & Benefits

- Installs in minutes with just a screwdriver - no hard wiring required
- One touch locking convenience
- Easily replaces any standard deadbolt
- Featuring SmartKey® Re-key Technology. The lock you can re-key yourself in seconds
- Additional products are available with Home Connect technology, visit [kwikset.com/wirelesslocks](http://kwikset.com/wirelesslocks)

## SMARTCODE 911



### Description

Add a level of security and style to your home with the SmartCode® touchpad electronic lever. Designed with a sleek style to complement your home's interior, you can lock up your home office, wine cellar or storage room and never have to worry about keys.

**Available Finishes:** 3, 11P, 15

### Features & Benefits

- Additional products are available with Home Connect technology, visit [kwikset.com/wirelesslocks](http://kwikset.com/wirelesslocks)

## SMARTKEY 913



### Description

Add style and security to your home with the SmartCode™ 913 deadbolt. The keyless entry deadbolt allows you to enter your home using a personal code and the motorized deadbolt locks with just the push of a button.

**Available Finishes:** 3, 11P, 15

### Features & Benefits

- Secured keyless entry convenience
- One touch locking
- Dramatically reduced interior size and sleek metal design
- 16 user codes plus master code feature for added security
- Additional products are available with Home Connect technology, visit [kwikset.com/wirelesslocks](http://kwikset.com/wirelesslocks)

## SMARTKEY 915



### Description

Kwikset®, the leader in residential security, introduces the NEW SmartCode™ 915 Touchscreen Electronic Deadbolt with SecureScreen™ technology! The advanced touchscreen is ultra responsive to touch for instant screen display and features cool white LEDs for defined illumination.

**Available Finishes:** 3, 11P, 15

### Features & Benefits

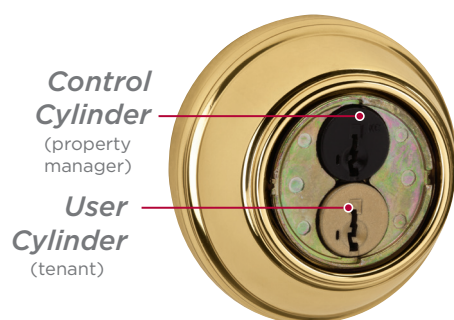
- Capacitive touchscreen
- Bright white LED's for clear visibility in the brightest sunlight
- Secured keyless entry convenience
- One touch locking
- Additional products are available with Home Connect technology, visit [kwikset.com/wirelesslocks](http://kwikset.com/wirelesslocks)

# KEY CONTROL™ DEADBOLT

## THE SMART ALTERNATIVE TO MASTER KEYING

Re-keying & managing a traditional master key system is labor intensive, time consuming & costly. With the first & only two cylinder Key Control™ Deadbolt, either cylinder can be re-keyed in seconds, without removing the lock from the door.

- Two separate cylinders, Tenant & Property Manager allow for more tenant key cuts than a traditional master key system
- Proprietary keyway adds security - the tenant key will never fit into the Property Manager Cylinder
- The Property Manager Cylinder is concealed when not in use to avoid tenant confusion



**Easily access the Key Control cylinder:** (1) Insert the SmartKey tool into the slot at bottom of cylinder cover (2) Rotate cover clockwise to expose the Key Control cylinder. (3) Now you have access to the Key Control cylinder. Use tool to rotate counter-clockwise back to user's keyway when appropriate.



- Re-key in seconds—save time & money
- Pick Resistant—passes the most stringent lock picking standard, UL437, par 11.6
- BumpGuard™ protection against lock bumping

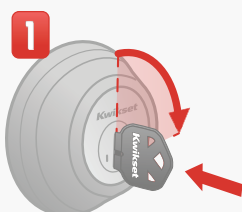


### HOW SMARTKEY WORKS

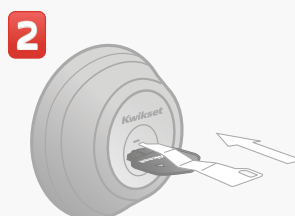
Re-key as Easy as 1-2-3



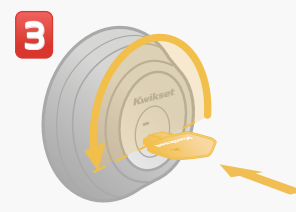
**!** You must have your functioning key & the learn tool for the system to work.



Insert functioning key & turn 1/4 turn clockwise.



Insert & remove the SmartKey learn tool. Remove functioning key.



Insert new key & turn 1/2 turn counter-clockwise. Done.  
**Your lock is now re-keyed!**

## Finishes

Our philosophy is that a finish can make all the difference. From Polished Brass to Rustic Bronze, the finish you choose makes a statement. It can, quite literally, finish off a room, giving it style and polish. We offer a full spectrum of finishes and textures.



	3	LO3	5	11P	15	15A	26	26D	501	502	514
<b>Knobs</b>											
Circa	•			•	•	•	•	•			
<b>Levers</b>											
Burbank	•			•	•			•			
Carson	•			•	•			•			
Halifax				•	•		•	•			
Kingston	•			•	•			•			
Lisbon				•	•		•	•			
Milan				•	•		•	•			
<b>Deadbolts</b>											
680/665/663	•		•	•	•	•	•	•			
780/785	•	•	•	•	•	•	•	•			
816 Key Control	•		•	•	•			•			
<b>Residential Electronic Locks</b>											
909 SmartCode	•			•	•						
909 CNT SmartCode				•	•		•	•			
911 SmartCode Lever	•			•	•						
913 SmartCode	•			•	•						
915 SmartCode	•			•	•						
925 Kevo Deadbolt		•		•	•						
PowerBolt	•			•	•			•			

## FIND OUT HOW MUCH SMARTKEY CAN SAVE YOU

Use our SmartKey Calculator to compare the cost of a traditional pin & tumbler re-key vs a SmartKey re-key. You will be amazed at the savings. As a building manager with hundreds of locks to maintain, it has never been faster or cheaper to re-key.

The Kwikset Saving Calculator allows you to share estimated time & cost savings with customers who are considering the purchase of SmartKey products.

MINUTES TO RE-KEY A  
TRADITIONAL PIN & TUMBLER

Min Per Lock: 10

AVERAGE LABOR COST PER LOCK

Cost Per Lock: \$25

NUMBER OF LOCKS

-

5

+

GO TO [KWIKSET.COM/CALCULATOR](https://www.kwikset.com/calculator)



**KEY CONTROL™**  
D E A D B O L T

***Kwikset***®

[www.kwikset.com](http://www.kwikset.com)

Access the Kwikset Smart Security App  
available for download



19701 DaVinci • Lake Forest, CA • 92610 • 1-800-327-LOCK (5625)  
3/16 47642 • Copyright © 2015 Spectrum Brands HHI