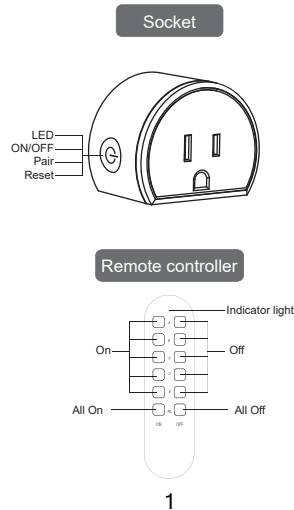
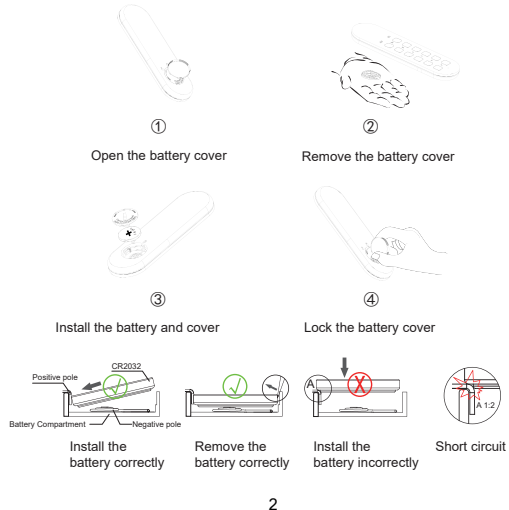


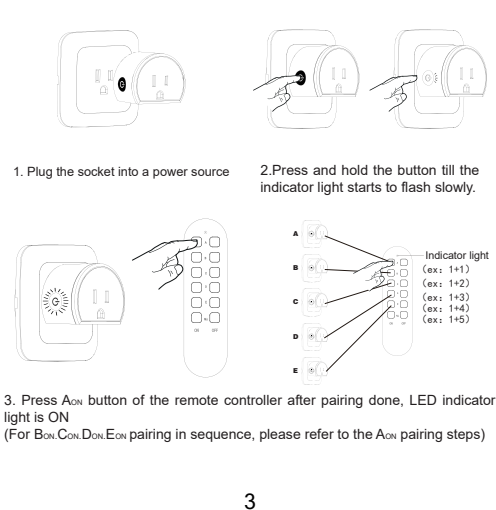
PRODUCT STRUCTURE



BATTERY INSTALLATION



PAIRING SETTING

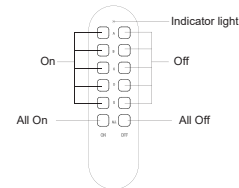


INSTRUCTIONS

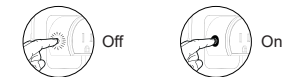
1. Remote control operation method

Example: Press the A_{ON} key to turn on the device, press the A_{OFF} key to turn off the device.

Example: Press the ALL_{ON} key to turn on all devices, press the ALL_{OFF} key to turn off all devices.



2. If the remote controller is not available, the socket could be ON/OFF by pressing the button in the socket.



CLEAR RECEIVER MEMORY



Press and hold the button around 20 seconds and release it after the indicator light turns off.

FCC Statement

This equipment has been tested and found to comply with the limits for a Class B digital device, pursuant to part 15 of the FCC Rules. These limits are designed to provide reasonable protection against harmful interference in a residential installation. This equipment generates, uses and can radiate radio frequency energy and, if not installed and used in accordance with the instructions, may cause harmful interference to radio communications. However, there is no guarantee that interference will not occur in a particular installation. If this equipment does cause harmful interference to radio or television reception, which can be determined by turning the equipment off and on, the user is encouraged to try to correct the interference by one or more of the following measures:

- Reorient or relocate the receiving antenna.
 - Increase the separation between the equipment and receiver.
 - Connect the equipment into an outlet on a circuit different from that to which the receiver is connected.
 - Consult the dealer or an experienced radio/TV technician for help.
- Caution: Any changes or modifications to this device not explicitly approved by manufacturer could void your authority to operate this equipment.

This device complies with part 15 of the FCC Rules. Operation is subject to the following two conditions: (1) This device may not cause harmful interference, and (2) this device must accept any interference received, including interference that may cause undesired operation.

RF Exposure Information

The device has been evaluated to meet general RF exposure requirement. The device can be used in portable exposure condition, compliance with exposure requirements.

PRODUCT SPECIFICATION



Model: SN10015USA
 Working voltage: 120V~ 60Hz 10A
 Max power rating: 1200W
 Operating range: Max 130 ft(outdoor open area)
 Frequency: 433.92MHz
 LED flash: Red
 Working temperature: 0°C~35°C
 Use scene: Indoor
 Standby power consumption: < 0. 3W



Model: 50190
 Frequency: 433.92MHz
 Working temperature: 0°C~35°C
 Working voltage: 1x3V CR2032
 Standby current: < 5μA
 Transmit power: < 5dBm



FAULT ANALYSIS AND SOLUTION

Problem	Possible Cause	Solution
The indicator light of the transmitter does not flash	The battery is not sufficient	Replace with a new battery
	The installation of batteries is not correct	Remove the battery and reinstall it again to make sure the contact is good
The receiver does not work	The pairing failed.	Re-pair the receiver and transmitter again
	The transmitter is too far from the receiver or there is a metal obstacle near the receiver's mounting location	Reduce the distance between the remote control and the receiver or move the metal barrier between them
One switch button controls multiple outlets	Multiple outlets are paired with the switch button	Clear all pairs of the socket and then re-pair to the corresponding switch buttons

PRECAUTIONS

1. Use Information

The following equipment must not be connected to the remote control plug:

- Equipment exceeding the technical value of the remote control plug (-> technical data).
- Equipment with motor capacitors (such as refrigerators, etc.).
- Opening the device unattended can cause fire or other damage (such as irons, etc.).
- Cathode-ray tube television.
- Do not use remote control plug outdoors, near dripping water, and in damp rooms (bathrooms, etc.).
- In an emergency, you must have quick access to the remote control plugs so that they can be removed from the grounded contact plugs in the event of a hazard.

2. Safety Information

- Do not plug multiple devices into each other.
- There is no voltage when the plug is disconnected.
- Only suitable for dry rooms.
- The remote control plug can only be connected to a properly installed grounded contact socket (120V~60Hz).
- The remote control plug must not be plugged into an extension cord and must not be overloaded (maximum 1200W).
- Do not open the device. Improper assembly may cause electric shock, short circuit or fire.
- The range of the remote control plug is severely affected by structural conditions (such as reinforced concrete) or sources of electrical / electromagnetic interference (fluorescent lights, cordless phones or earphones, TV/monitors, cables, etc.). If necessary, remove disturbance sources or keep a proper distance.
- Keep the equipment installation at a distance of more than 80CM from the ground.
- Avoid humidity, extreme temperature, vibration and shock.
- Clean with a soft, slightly damp cloth. Do not use detergents or solvents. Do not immerse in water.
- Do not plug pins or other metal objects into power outlets.

PRECAUTIONS

- Do not expose the battery to extreme temperatures such as direct sunlight or fire. Do not place the device on the heater. Leaking battery acid can cause damage.
- Always install batteries with the correct polarity (+ and -), as shown in the battery compartment.
- Notice! If the battery is incorrectly installed, there is a danger of explosion.
- When replacing the battery, only use the same type of battery.
- If the battery leaks, remove it from the battery compartment with a cloth, dispose the battery properly. If battery acid leaks, avoid contact with skin, eyes, and mucous membranes. If you come into contact with acid, immediately rinse the affected skin thoroughly with water and consult a doctor.
- Store the battery in a well-ventilated and dry place.
- If you do not use the device for a long time, remove the battery.
- Risk of explosion! Do not use other reagents to charge or reactivate the battery, and do not disassemble, throw into fire or short-circuit the battery.
- Remove the used battery from the device and dispose it immediately.

Warning :

1. This product contains button batteries. If you swallow a button battery, it will cause severe internal hurt within 2 hours and may result in death.
2. Keep new and used batteries away from children.
3. If the battery compartment cannot be closed tightly, please stop using the product and keep it away from children.
4. If you think the battery may be swallowed or entered any part of the body, please seek medical advice immediately.

SURNICE

Wireless Remote Plug User Guide

Model:SN10015USA+50190