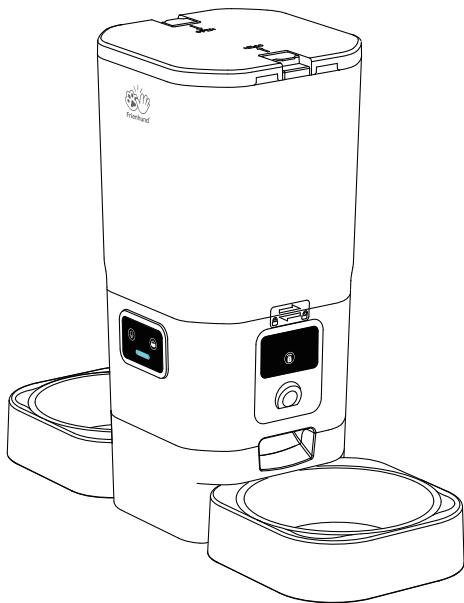
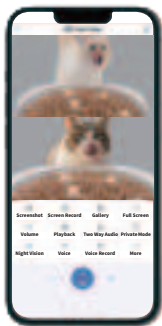




User Manual

Smart Pet Feeder with 2 Bowls & 2 Camera



Model:ACF180W

If the product is upgraded in the following please refer to the actual product in hand.



Contents

Safety Instructions	02
Warranty	03
Product Specifications	04
Packing List	05
Product Overview	06
Assembled Products	07
Memory Card Installation	12
Buttons Explained	13
Indicator Light Description	15
Install the APP and Log In	16
Add Feeder to APP	17
App Feature Descriptions	20
Disassemble for Cleaning	23
FQA	24

Safety Instructions



Please do not use wet, canned or moist food.



This product uses 3 × D Cell Batteries (not included) as a backup power supply. Please use double power supply to ensure the normal use of the product.



Examine the feeder after installation. Do not plug in if there is water on the power cable or plug.



Do not immerse the base part in water at any time as it may damage electronic components.



Do not disassemble the feeder other than as instructed in this user manual.



Only use accessories recommended or sold by the manufacturer. The use of accessories not recommended or sold by the manufacturer may cause an unsafe condition.



Dispose of all packaging materials properly. Some items may be packed in plastic bags, these bags could cause suffocation.

Warranty

Any questions about the use of the product, you can contact our brand after-sales staff. We will solve your problem until it is resolved.

◆ 1-Year Warranty

◆ 24/7 Online Support

For guidance on product use and warranty extension, please contact our brand after-sales staff via email: **support@frienhund.com**
If any questions related to orders, please contact the seller through the shopping platform.

◆ Monday-Friday:

Tel: 1-877-631-3655, (PST 8:00 am-5:00pm)

◆ Scan the code to view Installation Video, Wi-Fi Connection Tutorials, App Feature Descriptions.



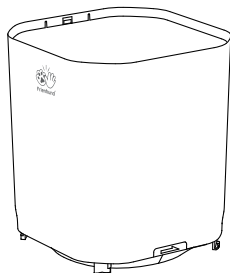
Product Specifications

Product Name	Smart Pet Feeder with 2 Bowls & 2 Camera
Suit For	Cat, Dog, Rabbit, Small Pets, Multiple Pets
Rated Voltage	5V/1A
Product Power	5W
Power Supply	Power Adapter and 3× D Cell Batteries(Not Included)
Material	ECO-Friendly ABS
Product Size	180*470*400mm/7*18.5*15.75in
Product Weight	1.92kg/4.2lb
Product Capacity	7L
Pet Food	Dry Food
Portion Weight	10~15g(0.02~0.03lb)
Camera	1080P HD Night Vision Camera

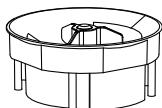
Packing List



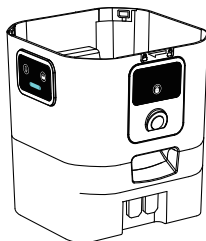
Lid*1



Food Tank*1



Meal Splitter*1



Feeder Base*1



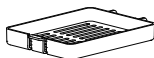
Power Adapter*1



USB Cable*1



Desiccant*1



Desiccant Compartment*1



ABS Wall Hook*1



Anchors*4



Screws*4



Stainless Steel Feeding Bowl*2



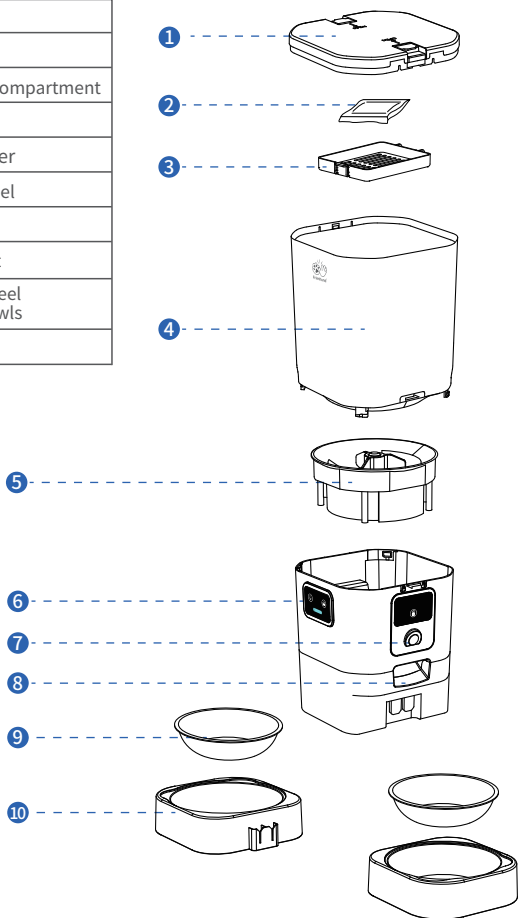
Bowl Tray*2



User Manual*1

Product Overview

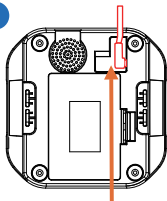
1	Lid
2	Desiccant
3	Desiccant Compartment
4	Food Tank
5	Meal Splitter
6	Control Panel
7	Camera
8	Food Outlet
9	Stainless Steel Feeding Bowls
10	Bowl Trays



Assembled Products

Step 1 Connecting Power

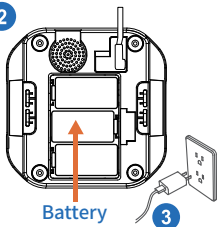
1



Power Cable

- Plug the 5V power adapter into the bottom of the feeder.

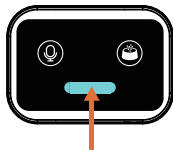
2



Battery

- Install 3× D Cell Batteries (not included) in the bottom of the feeder in case of power outages in the home.
- Plug in the home power supply.

4

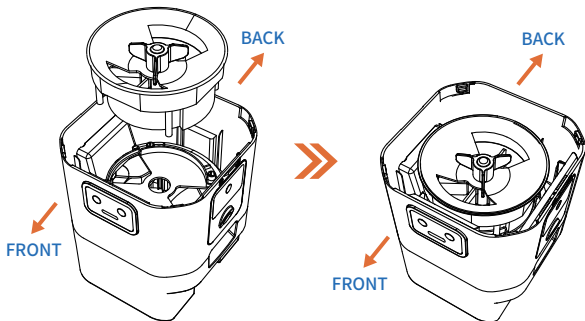


Indicator

- When the indicator is blinking blue, it means waiting for network connection.

Step2 Meal Splitter Installation

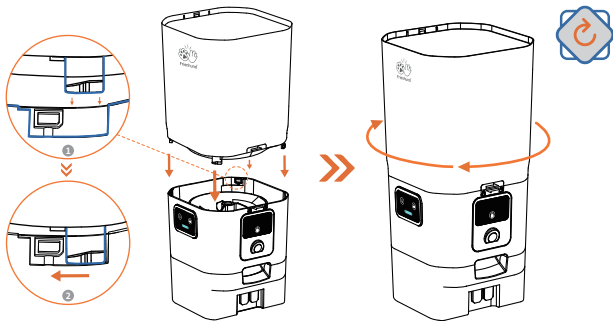
5



- Tip: Please install the Meal Splitter before installing the Food Tank.

Step 3 Food Tank Installation

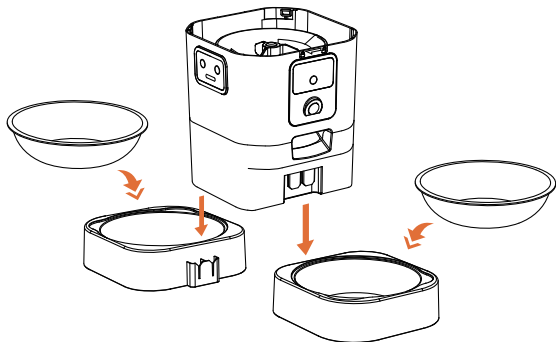
6



- Install as shown.
- The opening in the bottom of the food tank should match the opening in the base of the feeder, then turn clockwise to lock.

Step 4 Feeder Base Installation

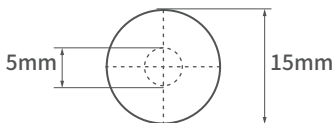
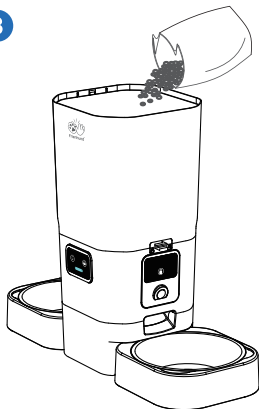
7



- Place the stainless steel bowl into the bowl tray.
- Insert the bowl tray into the feeder base.

Step 5 Add Food

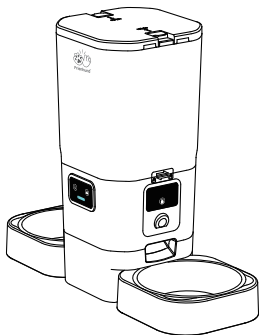
8



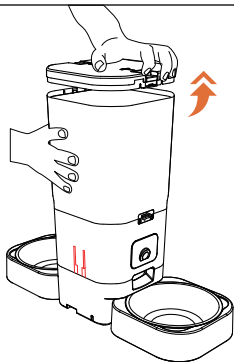
Note:

1. Please pour in dry food, not wet food or canned food.
2. Recommended food size: 5-15mm (0.19-0.59in)

9



- Close the lid

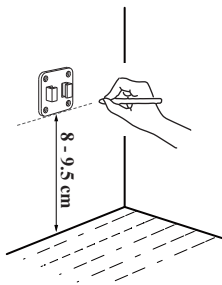


Tips:

Please refer to the picture to open the feeder lid.

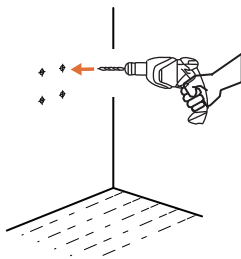
Step 6 Wall Hook Installation

1



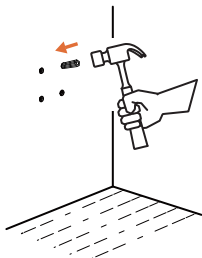
- Place the wall hook on the wall and mark the holes using a pen.
Note: The wall hook must be kept 8-9.5cm (3.15-3.75in) away from the floor.

2



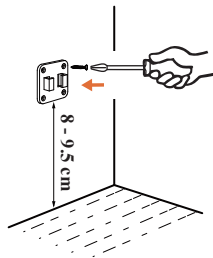
- Use an impact drill to drill the holes
Note: Use a 1/4 "(6mm) diameter drill bit.

3



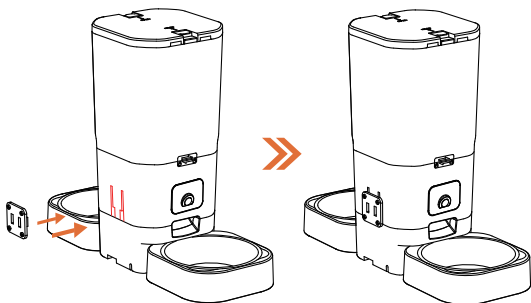
- Use a hammer to tap the plastic wall anchors plug into the hole, flush with the wall.

4



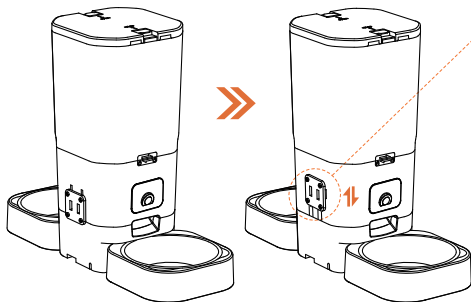
- Tighten screws to secure wall hook.

5



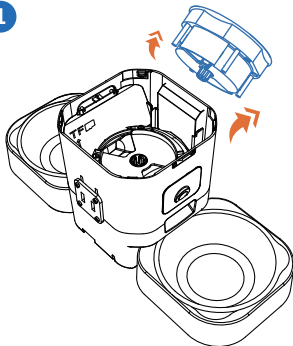
6

- Align the holes on the back of the feeder with the hooks on the wall hook and slide down.
- Installation completed.



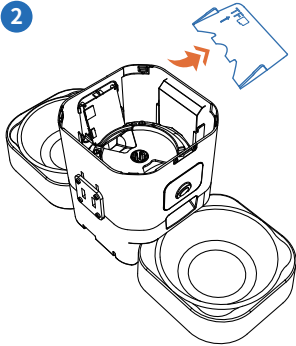
Memory Card Installation

1



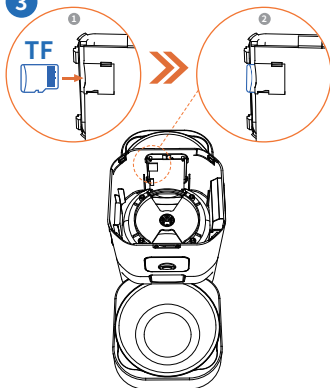
- Take out the meal splitter from the feeder base.

2



- Take out the baffle.

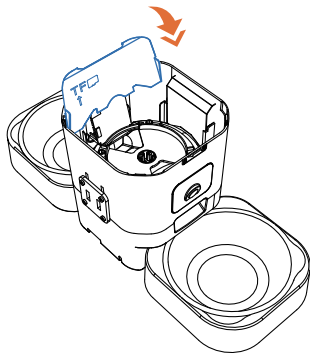
3



- Insert a TF card into the slot of PCB.

Note: Only TF cards formatted in FAT32 are supported (up to 128GB).

4

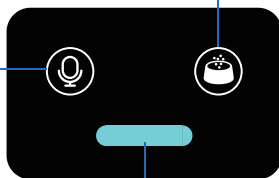


- Attach the baffle.

Buttons Explained

Front Panel

1. Record Sound
2. Check the Recordings
3. Clear Recording



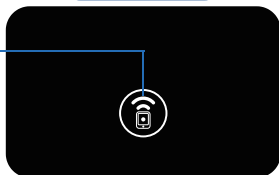
2
Short Press
For manual feeding,
and one press put out
one portion of food.

Long Press
For manual feeding,
long press to keep
food coming out.

3
Indicator Light

Side Panel

- 4**
WiFi Reset
Button



Recording Button

- 1. Record Sound**



2.Check the Recordings



Press to play the recorded sound

3.Clearing Recordings



3S

Press and hold



Hear a beep ~~~



Release the button immediately



WiFi Reset



5S

Press and hold



Hear a beep ~~~



Release the button



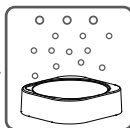
Wait for the indicator light to turn blue and blink.



Manual Feeding



Press







Short Press

Press once to get a portion of food.

Long Press

Press and hold to continue dispensing food.

Indicator Light Description

Color of Light	Status
 Blue Light Flashing	Waiting for WiFi Connection
 Blue Light Always On	WiFi Connected
 Red Light Always On	Enough Battery (Battery Powered Only)
 Red Light Flashing	Low Battery (Battery Powered Only)

▲Note:

After the blue light starts flashing, please finish connecting your phone to the device within fifteen minutes, otherwise the blue light will go out. At this point, if you want to restart the blue light blinking state, you need to either re-plug the power supply or press and hold the Wi-Fi reset button for 5 seconds to reset it.

Install the APP and Log In

■ App Installation

Scan the QR code or search in your device's app store to download and install the Smart Life app.



Smart Life



■ Sign up and log in

After opening the app, if you don't have an account, please register one. If you have already, please log in directly.



Add Feeder to APP

Step 1: Turn on phone permissions.




▲ Note:

1. Before adding the device to the APP, please make sure the indicator light on the feeder is blinking blue, as well as the **Bluetooth**, **WLAN**, and **GPS** in your phone are on.
2. The connection can only be established when plugged in and not powered by battery.

Step 2: The feeder is ready to connect to the network

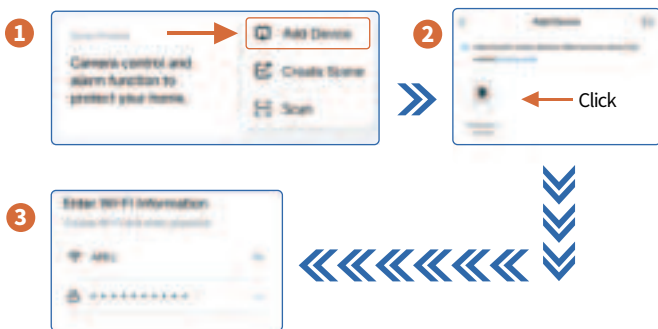
- ◆ Turn on the power to the feeder.
- ◆ Make sure the indicator light on the feeder is flashing blue.

- 1 Please open the Smart Life APP → Tap the [] in the upper right corner to add the device.



- 2 Please follow the app prompts to operate.

Method 1 Bluetooth Connection



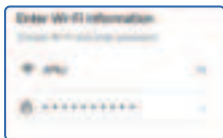
Method 2 Camera Scanning QR Code Connection



4

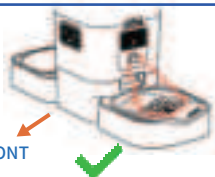
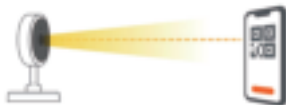


5

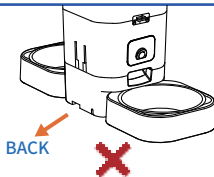


6

Please scan the QR code from 15 to 20 cm away



FRONT



BACK

▲ Note:

Please select a camera with a WiFi reset button on the side for scanning. If you choose to scan a camera without the WiFi button on its side, the scanning will fail. Please refer to the image above.

As the camera is tilted downward, the phone also needs to be tilted to align with the camera. Move back and forth from far to near for better recognition of the QR code.

Tips:

- Battery power is only for emergency use in case of power failure, please ensure dual power supply for normal use.
- Make sure the feeder and home WiFi are connected, the distance between the two should not be too far apart. Within 6m(19.7ft), depending on router coverage area.

App Feature Descriptions

Cumulative number of feeding portions for the day.

Set up:

Device Information

Share Device

Slow Feeding Mode:

When the Slow Feed Mode is turned on, 1 portion of food will be dispensed every 1 minute interval.

(The Slow Feed Mode only active in the feeding schedule)

HD Live View:

Click to enter and view the camera's HD live view.

Manual Feeding:

Up to 12 portions per click.

Feeding Schedule:

Daily feeding schedule can be set up for up to 20 meals.

(When setting, be sure to select the date)

Preview the daily set feeding schedule.

Feed Record:

Feeding history can be viewed.



- 1 Screenshot:**
Take a screenshot of the screen and the screenshot will be saved in an Gallery.
- 2 Screen Record:**
Click to record video, and click again to end video recording.
- 3 Gallery:**
Save screenshots or recorded videos. **(Can process files in batches)**
- 4 Full Screen:**
Click to view full screen.
- 5 Volume:**
Adjusting the volume of the feeder's sound playback.
- 6 Playback:**
Examine past video footage. You have the option to utilize a TF card or buy cloud storage.
- 7 Two Way Audio:**
Click to turn on the microphone for two-way intercom.
Click again to turn off the feature.
- 8 Private Mode:**
Turn off the camera's recording function.
- 9 Night Vision:**
Infrared night vision.
- 10 Vioce:**
Turning off the device speaker.
- 11 Voice Record:**
Click to enable the recording mode, and please move close to the feeder to record. The maximum recording time is 10 seconds.
- 12 Manual Feeding:**
Up to 12 portions per click.

One-Way Communication (Default Mode):



Hold the talk button to speak, release the button to end the talk.

Two-Way Talk:

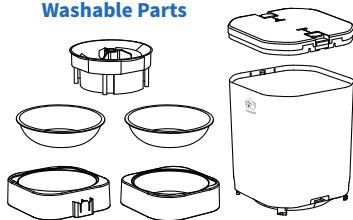


Click the button to talk, and when it's time to end the call, click the button again.

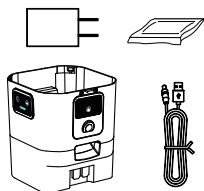
Disassemble for Cleaning

We recommend to clean the feeder regularly for the health of your pet. The washable parts of the feeder are as follows: lid, food tank, meal splitter, stainless steel feeding bowls, bowl trays.

Washable Parts



Do Not Wash



Problem	Solution
Can't connect the feeder to WiFi.	1) Make sure Bluetooth, WLAN and GPS are turned on on your phone when connecting. (Can be turned off after successful connection)
	2) Try connecting with other connections method.
	3) The WiFi network may be unstable; please attempt to connect multiple times.
	4) It is advisable to connect the device near the router (ideally within 3 meters).
	5) Consider switching to a 2.4G network connection.
	6) Troubleshoot the router to see if it is working properly (try rebooting the router)
	7) Contact us through the contact form above and we will address your questions until they are resolved.
The WiFi connection goes off line frequently.	1) Make sure the feeder has a good signal within the WiFi coverage area.
	2) Check that the power cord is stably connected.
The feeder's camera can't read the QR code on your phone.	1) Ensure that the indicator light on the feeder is blinking blue.
	2) Try connecting using another connection method. The APP provides a variety of connection methods. (Follow the prompts in the APP)
	3) The QR code in the APP and the camera move back and forth at the same height.

FAQ

Live video not showing.	1) Reconnect the feeder.
	2) Make sure the power cord is intact.
	3) Switch to stronger WiFi signal.
	4) If the network is poor, change the video quality from HD (high definition) to SD(standard definition).
Where are the photos and videos stored?	1) It's in the Gallery section of the Features function.



THANK YOU FOR TRUSTING AND CHOOSING Frienhund

Smart Pet Feeder with 2 Bowls & 2 Camera

Model : ACF180W

Manufacturer : ShenZhen Aochen Technology Co., Ltd

Address : 306, Zhida Industrial Park2, No. 4, Longping West Road,
Shengping Community, Longcheng Street, Longgang District,
Shenzhen, China

Email : support@frienhund.com

Made in China

If there is anything you would like to say to us

 Email: support@frienhund.com  www.frienhund.com
