



5177210A

EN

SONESSE2 40 Zigbee HP LI-ION

Short installation guide

ORIGINAL INSTRUCTIONS

Complete instruction guide available online on www.somfy.info**somfy**

From the Application
"Help me by Somfy"
scan the QR code here to
find complete setting
instructions.



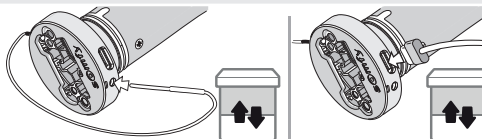
"Help me by Somfy"
available on stores

Available on the
Google play

Available on the iPhone
App Store

WAKE UP THE DRIVE

For initial unpackaging of drive, wake up the drive by briefly pressing the motor head programming button or plugging in the charger.

**1****START UP**

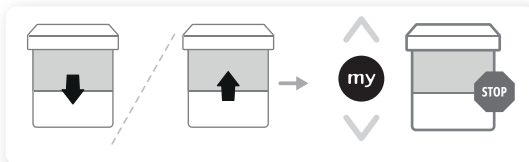
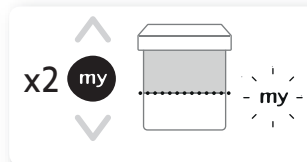
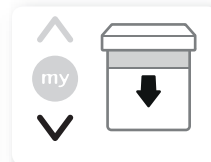
To set the drive, download "TaHoma pro" application available on stores

**DRIVE SETTING**

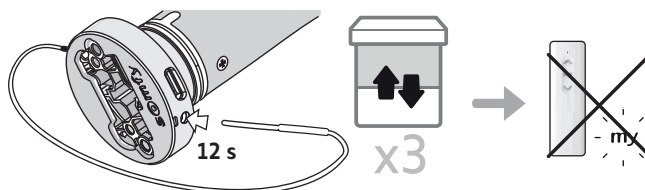
Once the "TaHoma pro" application is downloaded, open the app and follow the instructions to set the drive.

**2****USE**

This drive does not require any maintenance operation.

UP**STOP****MY****DOWN****3****DRIVE RESETTING**

⚠ This reset deletes all programmed control points, all end limit settings, resets the favourite (my) position for the drive and leaves the current Zigbee network.

**INSTRUCTIONS TO BE RESPECTED**

These instructions apply to all SONESSE2 40 Zigbee HP LI-ION drive, the different versions of which are available in the current catalogue.

FIELD OF APPLICATION

The Sonesse 40 drives are designed to motorise all types of:

- Interior vertical blinds which front rail moves solely by gravity with a mass less than 15 kg.
- Tiltable venetian blinds which bottom lath can be lifted at least by 4 cm when an upward force of 150 N is applied to the bottom lath positioned at 16 cm from the fully extended position.

LIABILITY

Please read these instructions carefully before installing and using the drive. In addition to following the instructions given in this guide, the instructions detailed in the attached **Safety instructions** document must also be observed.

The drive must be installed by a motorisation and home automation professional, according to instructions from Somfy and the regulations applicable in the country in which it is commissioned. It is prohibited to use the drive outside the field of application described above. Such use, and any failure to comply with the instructions given in this guide and in the attached **Safety instructions** document, absolves Somfy of any liability and invalidates the warranty.

The installer must inform its customers of the operating and maintenance conditions for the drive and must provide them with the instructions for use and maintenance, and the attached **Safety instructions** document, after installing the drive. Any After-Sales Service operation on the drive must be performed by a motorisation and home automation professional.

If in doubt when installing the drive, or to obtain additional information, contact a Somfy adviser or go to the website www.somfy.com.

SAFETY INSTRUCTIONS FOR WIRING

- ⚠ Cables which pass through a metal wall must be protected and isolated using a sheath or sleeve.
- ⚠ Attach cables to prevent any contact with moving parts.
- ⚠ If the drive is used outdoors, and if the power supply cable is a type H05-VVF cable, the cable should be installed in a UV-resistant duct, e.g. under a gland.
- ⚠ Leave the drive power supply cable accessible: the product must be easily replaceable.
- ⚠ Always make a loop in the power supply cable to prevent water entering the drive.

**WARNING**

To ensure electrical safety, this Class III drive must be powered by a «SELV» voltage source (Safety Extra Low Voltage).

The drive must be installed by a professionally qualified person (electrical specialist according to DIN VDE 1000-10) for drives and automations in the building services sector in accordance with the Somfy instructions and the applicable regulations in the country of commissioning.

Using this drive with any products which are not listed in the attached «Compatibility matrix» document shall also render invalid any Somfy warranty and release Somfy from any liability.

For the purposes of recharging the battery, only use the detachable supply unit provided with this appliance.

Improper using battery pack may cause overheat, fire, explosion, resulting in serious injury or death.

Do not expose the drive or battery to excessive temperatures.

There is a risk if terminals of the battery-operated drive or battery being short circuited by metal objects.

Ensure battery is fully charged prior to installation on site.

To increase the life of the battery, it is recommended to fully charge it every other year.



SPECIFIC INSTRUCTIONS FOR ASSEMBLY

SONESSE2 40 Zigbee HP LI-ION : interior diameter of the tube has to be Ø 37 mm or greater.

Frequency bands and Maximum power used

2.4 GHz - 2.4835 GHz e.r.p. <63mW [USA, Australia, Canada]
2.4 GHz - 2.4835 GHz e.r.p. <10mW [Other countries]

Power supply

15V DC-1A class 2 power supply SELV + LPS

Charging temperature

0 °C to 40 °C



The Bluetooth® word mark and logos are registered trademarks owned by the Bluetooth SIG, Inc. and any use of such marks by SOMFY ACTIVITIES SA is under license. Other trademarks and trade names are those of their respective owners.

Reference Designation

5177206 SONESSE2 40 Zigbee HP LI-ION



FCC warning statement:

- This device complies with Part 15 of the FCC Rules.

Operation is subject to the following two conditions:

(1) This device may not cause harmful interference, and (2) This device must accept any interference received, including interference that may cause undesired operation.

- This equipment complies with FCC radiation exposure limits set forth for an uncontrolled environment. End users must follow the specific operating instructions for satisfying RF exposure compliance. This transmitter must not be co-located or operating in conjunction with any other antenna or transmitter.

- Changes or modifications not expressly approved by the party responsible for compliance could void the user's authority to operate the equipment.

FCC RF RADIATION EXPOSURE STATEMENT: This equipment complies with FCC radiation exposure limits set forth for an uncontrolled environment. This equipment should be installed and operated with a minimum distance of 20 cm between the radiator and any part of your body.

FCC ID: DWN50N40R2ZBWF

ISED WARNING STATEMENTS: This equipment complies with IC RSS-102 radiation exposure limits set forth for an uncontrolled environment. This equipment should be installed and operated with a minimum distance of 20 cm between the radiator and any part of your body.

This device complies with Industry Canada's licence-exempt RSSs. Operation is subject to the following two conditions:

(1) This device may not cause interference; and (2) This device must accept any interference, including interference that may cause undesired operation of the device.

IC: 12049A50N40R2ZBWF

Apple and Apple logos are trademarks of Apple, Inc., registered in the U.S. and other countries.

iPad® and iPhone® are registered trademarks of Apple, Inc. App Store is a service mark of Apple Inc.

Android is a trademark of Google LLC.

<https://developer.android.com/distribute/marketing-tools/brand-guidelines>



Please separate storage cells and batteries from other types of waste and recycle them via the local collection facility.



We care about our environment. Do not dispose of the appliance with usual household waste. Give it to an approved collection point for recycling.



US Patents US8469171, US8253288, US8597157, patent pending.