

SECURITY LIGHTS SSL-B2-5CCT



WARNING

WARNING — THE INSTALLATION MUST BE CARRIED OUT BY A QUALIFIED ELECTRICIAN.

- LED Security Lights are suitable for using in wet locations
- Please keep the LED Security lights away from any corrosive substance, and please use dry cloth when you clean it
- Before installation or maintenance, please disconnect the power to prevent electric shock

CAUTION

PLEASE READ INSTRUCTION BEFORE COMMENCING INSTALLATION AND RETAIN FOR FUTURE REFERENCES.

- Electrical products can cause death or injury, or damage to property.
- If in any doubt about the installation or use of this product, consult a competent electrician.

HARDWARE CONTENTS (not actual size)



PREPARATION

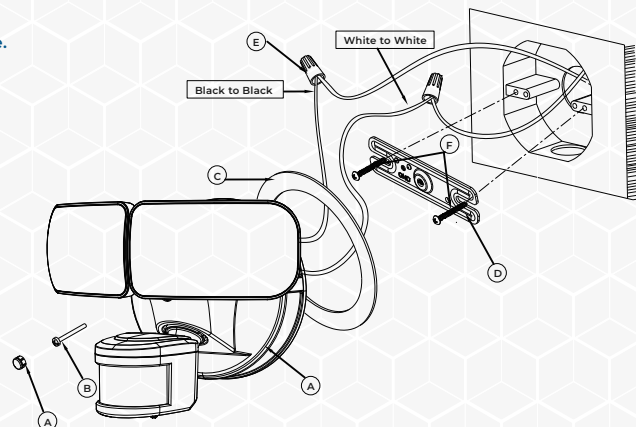
Before assembly, installation or operation of product, make sure all parts are present. Compare parts with package contents list and diagram on previous page. If any part is missing or damaged, do not attempt to assemble, install or operate the product. Contact customer service for replacement parts.

MOUNTING AND WIRING THE LIGHT

NOTE: DO NOT MOUNT ON THE GROUND, RECOMMENDED INSTALLATION HEIGHT IS 6½ FEET TO 10 FEET

1. Attach the cross bar (D) to the junction box using the (2) mounting screws (F).
2. Connect supply wires with wire nuts (E) as shown in the figure above.
Black wire to the Black supply wire (Live).
White wire to the White supply wire (Neutral).

3. You may use the optional gasket (C) at this point.
4. Install the light fixture to the cross bar (D). Use silicon sealant (not included) around the perimeter of the light to seal for moisture.
5. Screw in the stainless steel screw (B) to hold fixture in place. Insert plastic screw cover (A) into screw hole.
6. Turn on your electricity after installation is completed.
7. Turn on power switch. (If power switch is not on, the light will not operate).



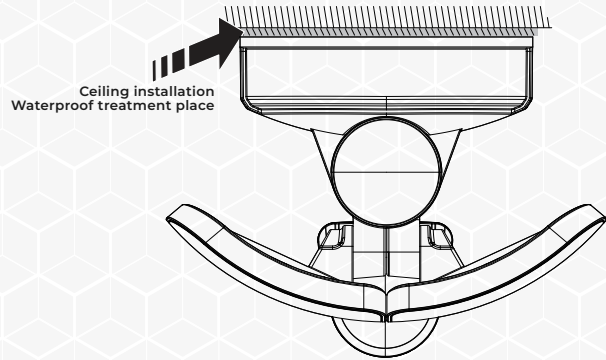
ORTECH reserves the right to modify at any time, without notice, any or all of our product's features, designs, components and specifications to meet market changes.



SECURITY LIGHTS SSL-B2-5CCT

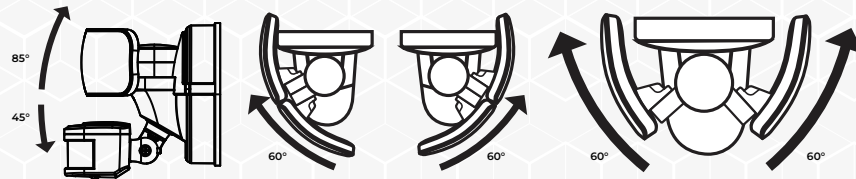
WATERPROOF TREATMENT INSTRUCTIONS

Place silicone(not included) around the mounting plate and its surface to ensure a waterproof seal.
The light can be mounted on eaves, soffits, or walls, so there are 2 installation ways, ceiling-mounted and wall-mounted.



ADJUSTING LIGHT HEADS

Your light heads can be adjusted by turning the individual light head to desired position horizontally or vertically.

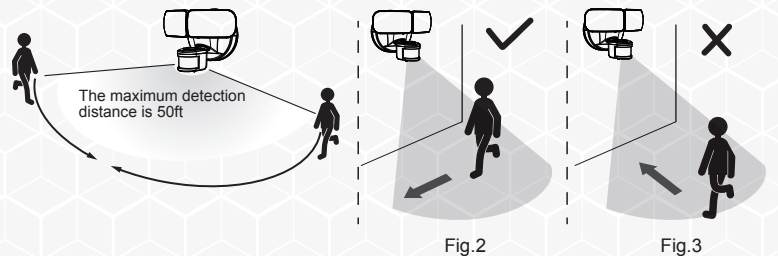


MOTION SENSOR SENSITIVITY

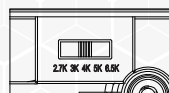
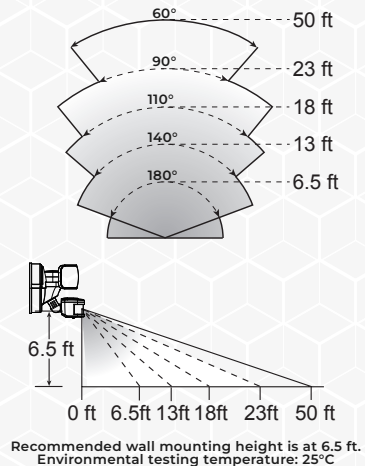
1. The sensor is affected by brightness, temperature, and moving objects.
2. Do NOT install near other sources of light, as this can affect motion sensor detection.

Significant temperature changes may cause sensor malfunctions, so avoid placing the sensor near vents, heat exhausts or AC units.

3. When installing, ensure the sensor is not placed too close to trees. Movement of branches in the wind may trigger the sensor.
4. The sensor cannot detect infrared light through glass or object.



5. The sensor is very sensitive to lateral motion, with a maximum detection distance of 50 ft. (Fig. 2)
6. In contrast, the sensor may not be very sensitive to movement directly towards the light and may occasionally detect such movement within 12 ft, due to the small displacement involved. (Fig. 3)



CCT
SELECTABLE
SWITCH

ORTECH reserves the right to modify at any time, without notice, any or all of our product's features, designs, components and specifications to meet market changes.



CARE AND MAINTENANCE

1. To clean the surface of the light, use mild soap and water.
2. Do not use scouring pads, powders, steel wool or any other abrasive materials.
3. Do not immerse in water.

TROUBLE SHOOTING

Problem	Possible Cause	Possible Correction
Light does not come on.	<ol style="list-style-type: none"> 1. No power to the fixture. 2. Fixture is sensing too much light. 3. Bad connection. 	<ol style="list-style-type: none"> 1. Confirm wall switch is on. 2. Cover photocell, unit should come on. Unit may need to be relocated. 3. Check wiring connection.
Light stays on.	<ol style="list-style-type: none"> 1. Determine if it is in constant light mode. 	<ol style="list-style-type: none"> 1. Adjust to the desired mode.
Light does not detect motion.	<ol style="list-style-type: none"> 1. The sensor may not be aimed correctly. 	<ol style="list-style-type: none"> 1. Adjust the installation position to align the sensor with the desired detection location.
Circuit breaker trips or fuse blows when light is turned on.	<ol style="list-style-type: none"> 1. Discontinue use immediately. 	<ol style="list-style-type: none"> 1. Call an electrician.
Light cycles ON and OFF continuously(strobe light effect).	<ol style="list-style-type: none"> 1. Dusk-to-dawn sensor is detecting reflected light from the security light. 	<ol style="list-style-type: none"> 1. Change the position of the light head. Reposition light away from the reflecting surface. 2. Place a small piece of black electrical tape over the bottom half of the dusk-to-dawn sensor. 3. Move the light to different location.
Light comes on for no obvious reason.	<ol style="list-style-type: none"> 1. Motion sensor is picking up errant movement. 	<ol style="list-style-type: none"> 1. Verify the sensor is not picking up movement of trees, bushes, passing vehicles, lawn decorations, water, etc.



ORTECH reserves the right to modify at any time, without notice, any or all of our product's features, designs, components and specifications to meet market changes.

