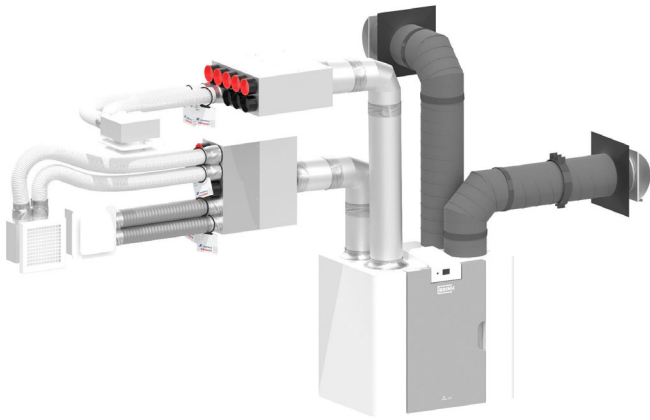


# 475 Installation Instructions: BRINK HRV/ERV Exterior Insulated Ducts



## Application conditions and preparation

- Ambient temperature: 40 to +90°F

## Required Tools



Serrated knife



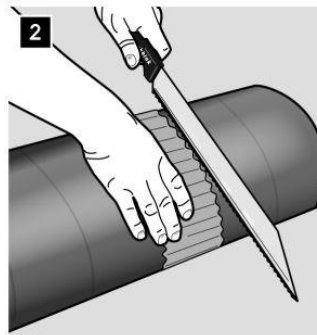
Tape measure

## 1- Guide to cut straight



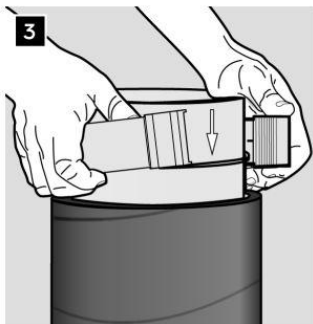
Wrap cloth strapping around the duct to guide your cut

## 2- Cut to length

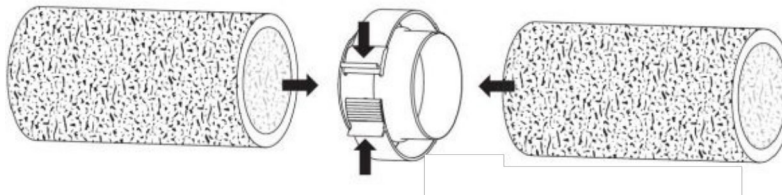


Use a serrated knife - with blade that is longer than the duct diameter - to cut duct to desired length (measure twice, cut once!).

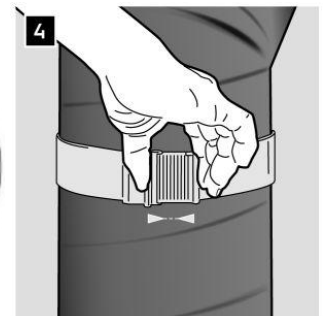
## 3- Inserting connectors into ducts



Insert connector into one side of duct/elbow.  
Add duct or elbow to other side of connector.  
Make sure ducts fit squarely and tight into connector.



## 4- Close connector



Secure ducts to connector by engaging strap. Engage by pinching strap and pushing end into locking slot

## 5 - Connecting to Brink FLAIR



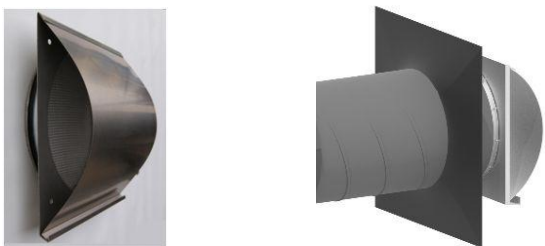
Push duct over duct connectors on FLAIR. The connector has gaskets / sealing ring. Use a ¼" tie-wrap to secure duct to take-off as desired.

## 6- Connecting to manifolds



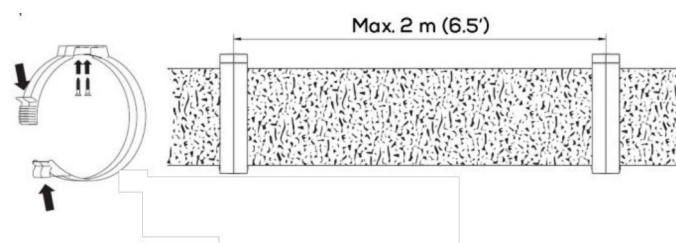
- 7"/180mm ducts can be used on interior to connect FLAIR to 15 port manifold or with an reducer to a 160mm end of a 10 port manifold.
- 5"/125mm ducts can be used on interior to connect to FLAIR 5 port manifold.

## 7- Wall termination



Use appropriately sized (125/180/200mm) wall grill that matches insulated duct size. Seal wall penetration with appropriate size ROFLEX gasket.

## 8- Support



Use supports (wall brackets) at least every 6.5' (2m) or where duct lay out warrants support to assure system stays airtight/connectors reliably connected

This insulated ducting system is an innovative, lightweight, and durably insulated piping system developed to meet the thermal and acoustic demands for balanced HRV/ERV systems. It is composed from a non-porous, 16mm EPE insulation foam. It has great thermal insulation and noise reduction properties. The ducts and components are simple and fast to assemble. The ducts can be easily and precisely shortened. At the same time, the self supporting nature of the ducts minimizes the need for brackets and supports. As required, please use support brackets every 6'5 (2m) or as needed for layouts.

The connectors and brackets are dry (not taped), which means that insulated ductwork can be disassembled for inspection and cleaning.

The connectors also connect to collars of HRV/ERV unit, manifolds, and to wall terminals. In this way, 475 insulated ducts allows the installer to lay out a complete distribution network with a small number of components. Use ¼" tie wraps as required to secure ducts to gasketed connectors, sleeves, or when transitioning to spiral/snap lock ducts.

EPD certified and REACH compliant