

HAYMAN REESE
PART No: 03212RW
LDV G10 CL4

INSTALLATION INSTRUCTIONS

PLEASE ENSURE THAT INSTRUCTIONS ARE UNDERSTOOD PRIOR TO FITMENT
PLACE THESE INSTRUCTIONS IN THE VEHICLE'S GLOVEBOX AFTER INSTALLATION IS COMPLETED



Installation Time: Approx 180 Mins

Towbar Installation Instructions

Towbar capacity

LDV G10 CL4

Part Number 03212RW

Max Towing Braked 1500kg

Max Towing Unbraked 750kg

Max Static Ball Load 150kg

ECU: 04836

Tail Harness Length Required: 1200mm

**Tail Harness Part Number Req'd: 04937 – Required for vehicles
equipped with Rear Park Assist**

RPA Disable Information: Via Wiring Loom

Electric Brake Location: Blue Wire Near Grommet

Hayman Reese (Cequent)
PO Box 4050, Dandenong South VIC 3164
Phone 1800 812 017 Email info@haymanreese.com.au

www.haymanreese.com.au



HAYMAN REESE
PART No: 03212RW
LDV G10 CL4

INSTALLATION INSTRUCTIONS

PLEASE ENSURE THAT INSTRUCTIONS ARE UNDERSTOOD PRIOR TO FITMENT
PLACE THESE INSTRUCTIONS IN THE VEHICLE'S GLOVEBOX AFTER INSTALLATION IS COMPLETED

Warning:

1. Do not, drill, cut, weld or otherwise modify the towbar.
2. If you are using electric welding on a motor vehicle, **always** check that the vehicle is not equipped with electronic engine or instrument management equipment. Failure to do so could **destroy** any on board computers. If in doubt, check with the vehicle's manufacturer.
3. If TBM is used in inverted position tow ball may make contact with rear tailgate when lowered, which could cause damage.

General:

1. Ensure all hardware items have been included refer to assembly diagram.
2. It is recommended that the instructions are read through and completely understood before making any attempt to fit this product.
3. Be wary of any changes to vehicle designs or other accessories that may conflict with the installation of this product.
4. Before drilling ensure that the area is clear of fuel, electrical & other components.
5. All holes drilled into the body panels shall have all burrs & swarf removed then coated with a suitable rust preventative paint.
6. The high tensile fasteners supplied with this product were used to achieve the specified rating. If replacement is required ensure that fasteners of the same rating & quality are used. Contact an authorised **Hayman Reese** dealer if further information is required.
7. Ensure that all hardware is fastened to torque list below check fasteners on regular basis.
8. Towbar load rating sticker provided with this product shall be conspicuously located on inside rear end of the driver's door. **(See diagram below).**
9. Hayman Reese recommends that you check your tow ball to ensure that it complies with the Australian standards **AS 4177.2**.
10. **PLEASE NOTE:** It is advised to remove your LUG or TBM when not actually towing so as to produce a clear view of the vehicles registration plate if obscured, and to also provide maximum available departure angle.

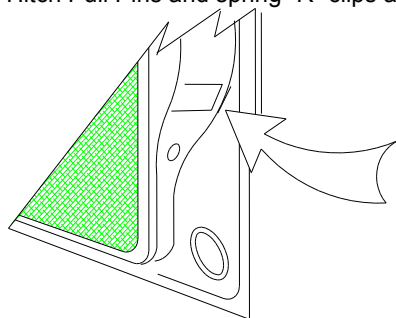
Tow bar Maintenance and Care.

Hayman Reese recommends that bolt torque's, as listed below, are routinely and regularly inspected and checked for correct tension. Replace any worn or defective parts.

We recommended to remove Tow Ball Mounts (TBM's, tongues or lugs) when not being used for any considerable length of time.

So as to avoid injury, when not towing it is suggested that the tongue, Pull Pin and R-clip are removed then stored in a safe, clean and dry place, away from excessive moisture.

Hitch Pull Pins and spring "R" clips are regularly checked for proper installation. Replace any worn or defective parts.



**Place load rating sticker
inside driver's door here**

**RECOMMENDED ASSEMBLY TORQUE
LISTING**

Diameter Grade 8.8 Bolt

M6	9.5 Nm
M8	21.7 Nm
M10	43.4 Nm
M12	77.3 Nm
M14	146 Nm
M16	189.8 Nm

FOR TOWING PURPOSES ONLY

**For towing capacity details please refer to vehicle
owner's manual or to the manufacturer. Overloading can
void your warranties.**

Hayman Reese (Cequent)
PO Box 4050, Dandenong South VIC 3164
Phone 1800 812 017 Email info@haymanreese.com.au

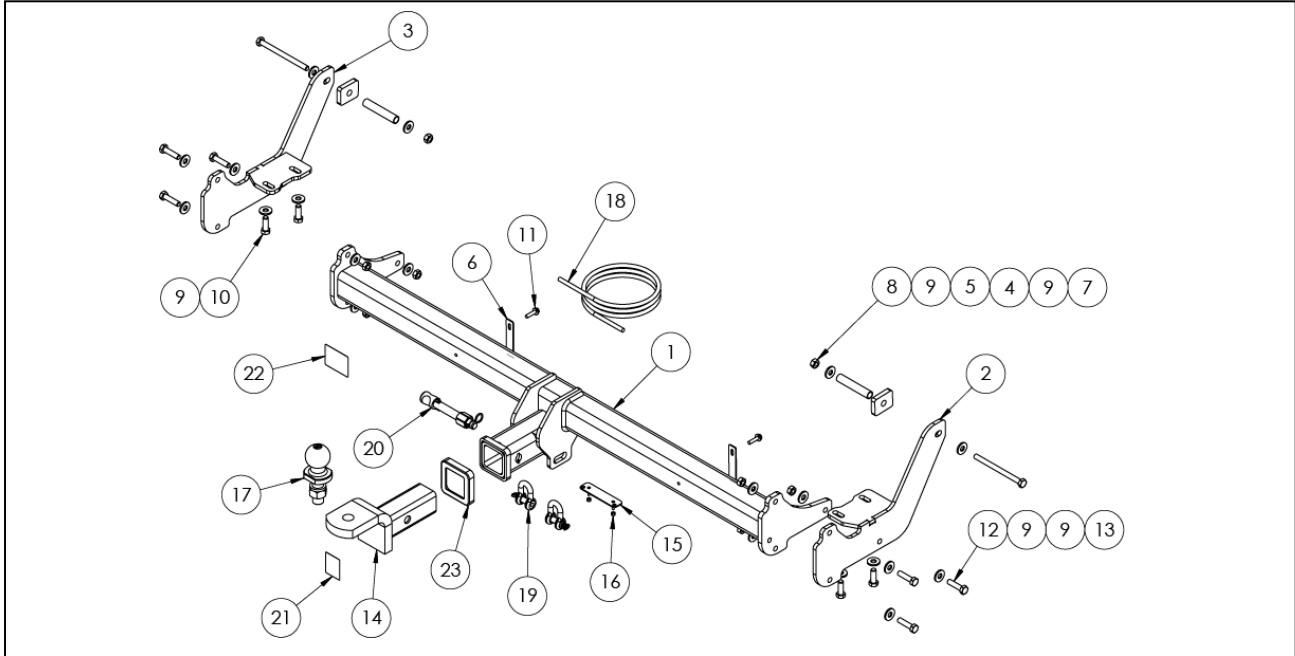
www.haymanreese.com.au



HAYMAN REESE
PART No: 03212RW
LDV G10 CL4

INSTALLATION INSTRUCTIONS

PLEASE ENSURE THAT INSTRUCTIONS ARE UNDERSTOOD PRIOR TO FITMENT
PLACE THESE INSTRUCTIONS IN THE VEHICLE'S GLOVEBOX AFTER INSTALLATION IS COMPLETED



ITEM	DESCRIPTION	QTY	ITEM	DESCRIPTION	QTY
1	LDV G10 CL4 WELDED ASSY	1	17	TOWBALL 50MM FLAT CHROME	1
2	SIDE ARM ASSY RH	1	18	WIRING LOOM	1
3	SIDE ARM ASSY LH	1	19	10mm "D" SHACKLE	2
4	SPACER	2	20	SMART PIN ASSY CLASS 4 - GOLD	1
5	SPACER TUBE	2	21	HAYMAN REESE LOGO STICKER	1
6	BUMPER TAB	2	22	ACRYLIC COMPLIANCE LABEL	1
7	CS M10 x 130 Bolt	2	23	HITCH BOX COLLAR COVER	1
8	NUT HEX HD M10x1.5P	2			
9	WASHER PLAIN M10 X 25 X 3	20			
10	BOLT HEX HD M10 x 30 1.5P	4			
11	TEK SCREW 14-10 HEX HD 25mm	2			
12	BOLT HEX HD M10 X 40 X 1.25P	6			
13	NUT HEX HD M10 X 1.25P	6			
14	TRAILER BALL MOUNT	1			
15	VE PLUG BRACKET	1			
16	NUT NYLOCK HEX HD M4X0.7P	2			

Hayman Reese (Cequent)
PO Box 4050, Dandenong South VIC 3164
Phone 1800 812 017 Email info@haymanreese.com.au

www.haymanreese.com.au

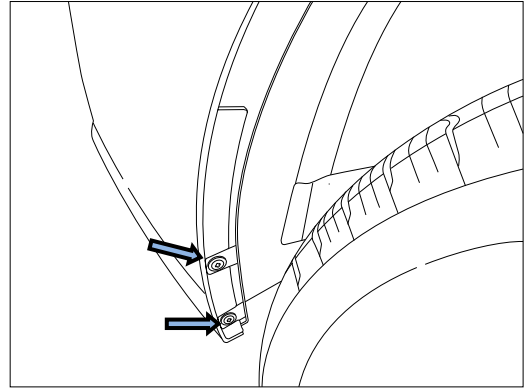


HAYMAN REESE
PART No: 03212RW
LDV G10 CL4

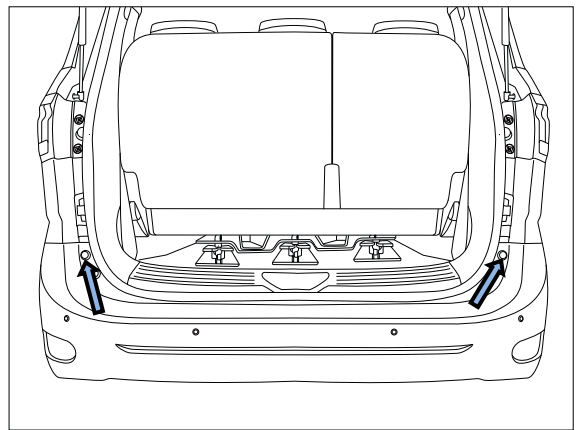
INSTALLATION INSTRUCTIONS

PLEASE ENSURE THAT INSTRUCTIONS ARE UNDERSTOOD PRIOR TO FITMENT
PLACE THESE INSTRUCTIONS IN THE VEHICLE'S GLOVEBOX AFTER INSTALLATION IS COMPLETED

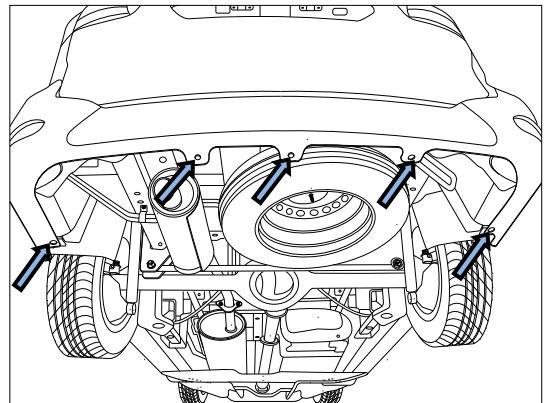
1. Inside wheel arch remove 2 x screws
Repeat for other side.



2. Open rear door to expose 2 x screws securing the bumper.
Remove the screws.



3. Remove the 5 x scrivets located under and along the length of the bumper.



Hayman Reese (Cequent)
PO Box 4050, Dandenong South VIC 3164
Phone 1800 812 017 Email info@haymanreese.com.au

www.haymanreese.com.au



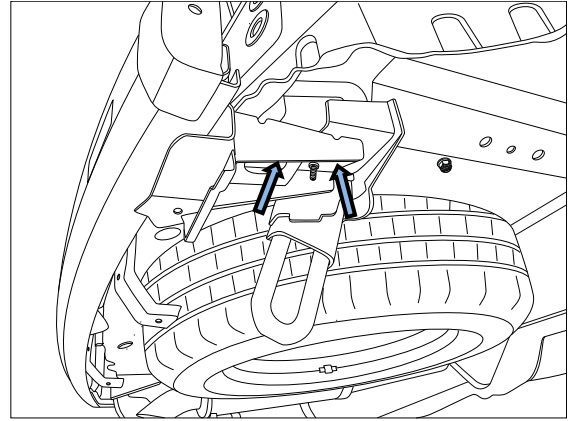
HAYMAN REESE
PART No: 03212RW
LDV G10 CL4

INSTALLATION INSTRUCTIONS

PLEASE ENSURE THAT INSTRUCTIONS ARE UNDERSTOOD PRIOR TO FITMENT
PLACE THESE INSTRUCTIONS IN THE VEHICLE'S GLOVEBOX AFTER INSTALLATION IS COMPLETED

4. On the RH side, remove the 2 x bolts securing the impact beam to the chassis rail.

Repeat for other side



5. Carefully remove the bumper by peeling away from the sides.

Ensure to disconnect the main electrical plug/s located under bumper on the LH side.

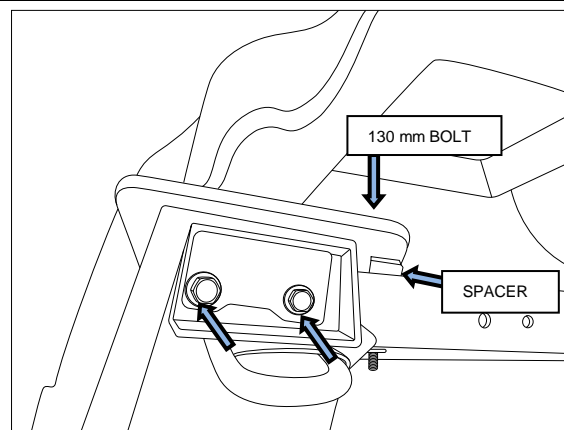
NOTE: The impact beam comes away with the bumper.

6. Loosely secure the RH Side arm assy to the side of the chassis with 1x M10 x 130 bolt complete with 2 x washers, 1 x crush tube, 1 x spacer and 1 x M10 nut. Be careful that the crush tube does not fall into the chassis rail.

The spacer fits between the side arm and the chassis rail.

Loosely secure the bottom of the side arm with 2 x M10 bolts complete with 1 x washer per bolt.

Repeat for the other side



Hayman Reese (Cequent)
PO Box 4050, Dandenong South VIC 3164
Phone 1800 812 017 Email info@haymanreese.com.au

www.haymanreese.com.au



HAYMAN REESE
PART No: 03212RW
LDV G10 CL4

INSTALLATION INSTRUCTIONS

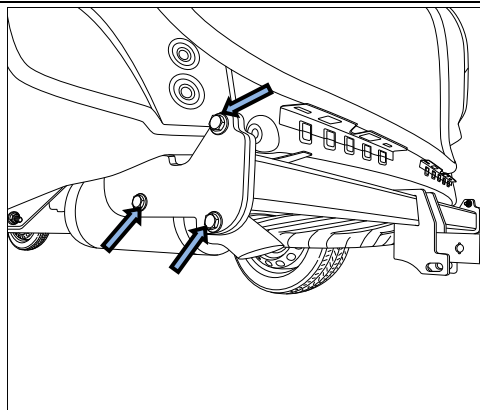
PLEASE ENSURE THAT INSTRUCTIONS ARE UNDERSTOOD PRIOR TO FITMENT
PLACE THESE INSTRUCTIONS IN THE VEHICLE'S GLOVEBOX AFTER INSTALLATION IS COMPLETED

7. Lift the crosstube to the side arm assemblies and secure with 6 x M10 x 40 x 1.25P complete with 2 x washers and 1 x M10 nut per bolt (3 per side).

Position the towbar and torque all fasteners accordingly:

M10 (GR8.8) :44Nm

M10 (GR 10.9) : 68Nm



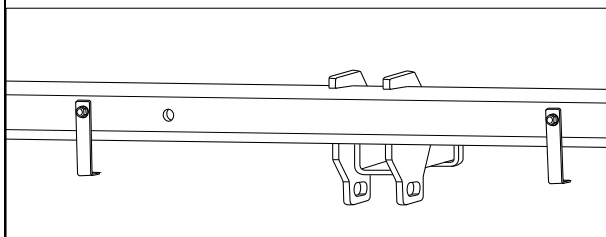
8. Bumper tabs fitment.

LDV Standard:

With the bend facing rearwards of the vehicle, loosely secure the 2 x bumper tabs to the rear of the crosstube with 1 x tek screw per bumper tab as depicted.

LDV Executive:

With the bend facing forwards of the vehicle, loosely secure the 2 x bumper tabs to the front of the crosstube with 1 x tek screw per bumper tab.



LDV Standard fitment shown

9. On inside of the removed bumper, disconnect the wiring harness and connectors from the impact beam and discard the impact beam.

Hayman Reese (Cequent)
PO Box 4050, Dandenong South VIC 3164
Phone 1800 812 017 Email info@haymanreese.com.au

www.haymanreese.com.au



HAYMAN REESE
PART No: 03212RW
LDV G10 CL4

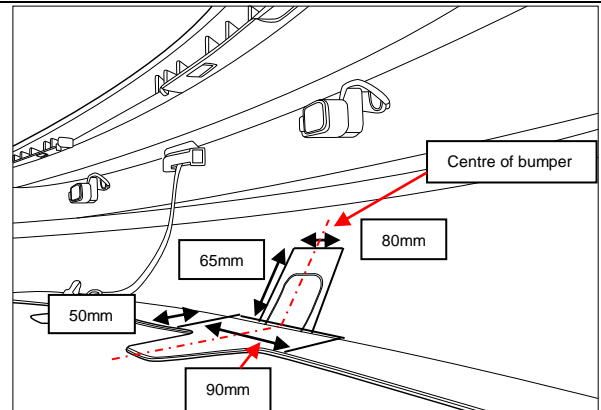
INSTALLATION INSTRUCTIONS

PLEASE ENSURE THAT INSTRUCTIONS ARE UNDERSTOOD PRIOR TO FITMENT
PLACE THESE INSTRUCTIONS IN THE VEHICLE'S GLOVEBOX AFTER INSTALLATION IS COMPLETED

BUMPER CUT

For LDV Standard:

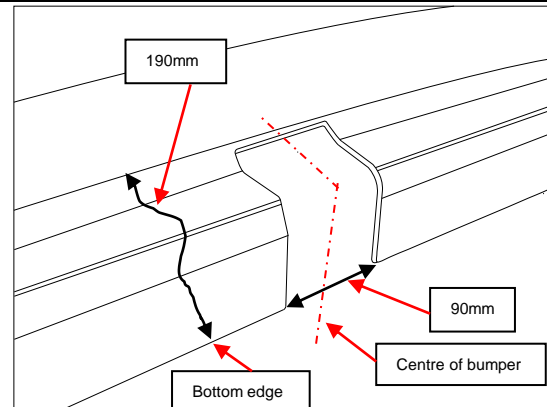
10. Locate the centre of the bumper, mark and cut out a 90mm wide x 50mm rectangle on the bottom of the bumper. On the rear surface of the bumper cut a 80mm wide x 65mm high rectangle measured from the bottom of the bumper.



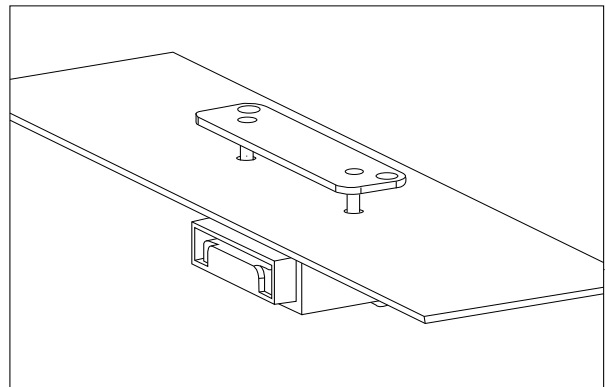
BUMPER CUT

For Executive model:

11. Locate the centre of the bumper. Mark out 90mm wide and from the bottom edge, measure off 190mm length running along the outside profile of the bumper.
(Cut should stop just below the style line)



12. At an appropriate position on the bumper, mark out and drill 2x ø5mm holes 69mm apart on bumper skin to support plug bracket.



Hayman Reese (Cequent)
PO Box 4050, Dandenong South VIC 3164
Phone 1800 812 017 Email info@haymanreese.com.au

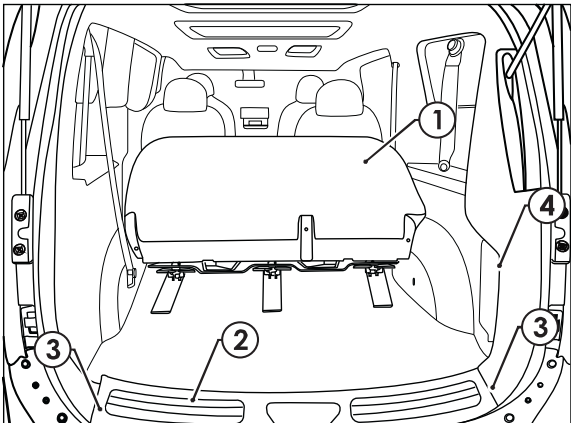
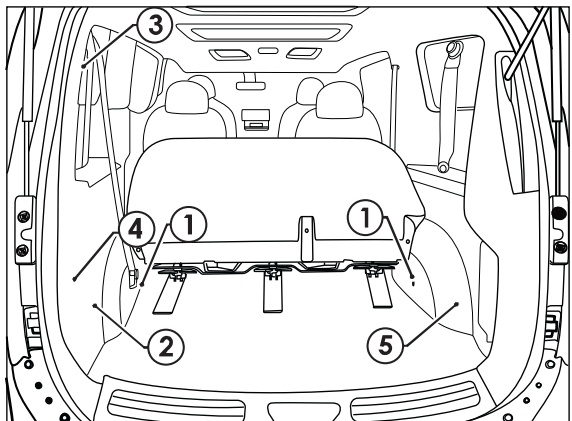
www.haymanreese.com.au



HAYMAN REESE
PART No: 03212RW
LDV G10 CL4

INSTALLATION INSTRUCTIONS

PLEASE ENSURE THAT INSTRUCTIONS ARE UNDERSTOOD PRIOR TO FITMENT
PLACE THESE INSTRUCTIONS IN THE VEHICLE'S GLOVEBOX AFTER INSTALLATION IS COMPLETED

<p>13. Refit the bumper to the vehicle following the steps 5 to 1 in reverse. Ensure all loose wiring and connectors, removed from the impact beam, are secured to the crosstube using cable ties (not provided).</p> <p>14. Position and secure the bumper tabs to the crosstube.</p>	
<p>15. Disconnect negative battery terminal.</p> <p>16. Push rear seats forward (1).</p> <p>17. Remove Lower boot trim (2).</p> <p>18. Remove 2 screws (3).</p> <p>19. Remove the Plastic Ventilation Panel on the RHS lower trim (4).</p>	
<p>20. Undo the 2 seatbelt Bolts (1).</p> <p>21. Dislodge LHS rear lower trim (2) and upper trim (3).</p> <p>22. Disconnect the boot light connector (4).</p> <p>23. Dislodge the RHS rear lower trim (5).</p>	

Hayman Reese (Cequent)
PO Box 4050, Dandenong South VIC 3164
Phone 1800 812 017 Email info@haymanreese.com.au

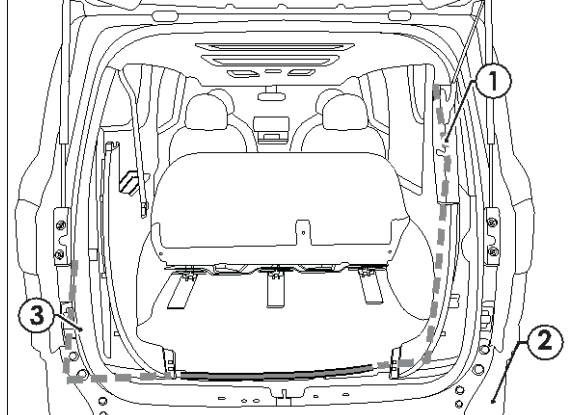
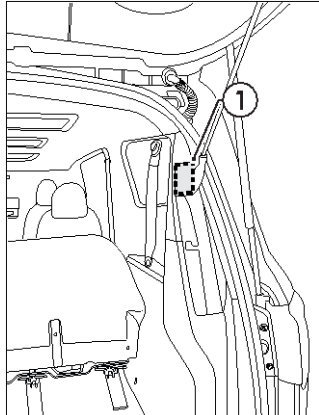
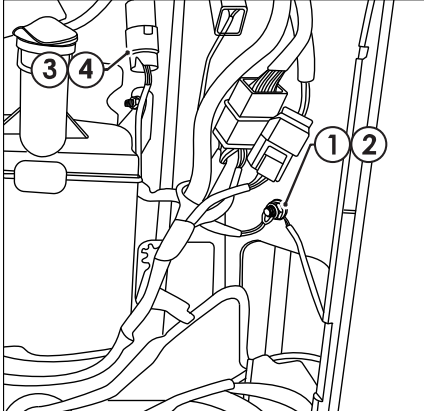
www.haymanreese.com.au



HAYMAN REESE
PART No: 03212RW
LDV G10 CL4

INSTALLATION INSTRUCTIONS

PLEASE ENSURE THAT INSTRUCTIONS ARE UNDERSTOOD PRIOR TO FITMENT
PLACE THESE INSTRUCTIONS IN THE VEHICLE'S GLOVEBOX AFTER INSTALLATION IS COMPLETED

<p>24. Route the 12-way (1) connector to the upper RHS rear trim.</p> <p>25. Route the grommet (2) to the lower RHS trim.</p> <p>26. Route the 1-way terminal with Yellow/Black wire (3) to the LHS tail light.</p>	
<p>27. Mount the ECU (P/N: 04836) (1) behind the upper RHS rear trim using the provided double sided tape.</p> <p>Ensure ECU is mounted with the connector pointing downwards.</p>	
<p>28. Mount the M6 ring terminal (1) to the vehicle Ground Stud (2) located behind the lower RHS rear trim.</p> <p>29. Patch in the 6-way connector (3) using provided T-patch (4).</p>	

Hayman Reese (Cequent)
PO Box 4050, Dandenong South VIC 3164
Phone 1800 812 017 Email info@haymanreese.com.au

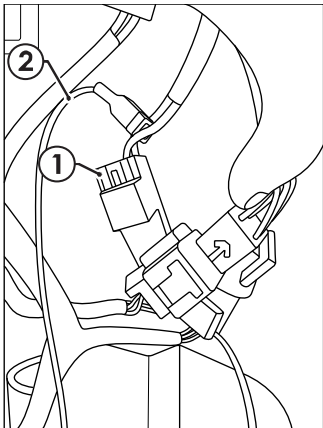
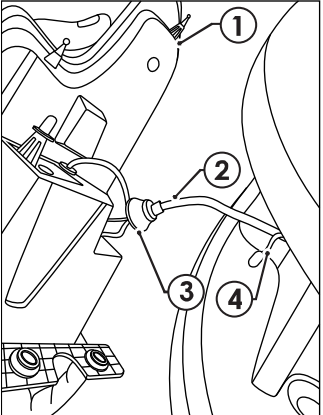
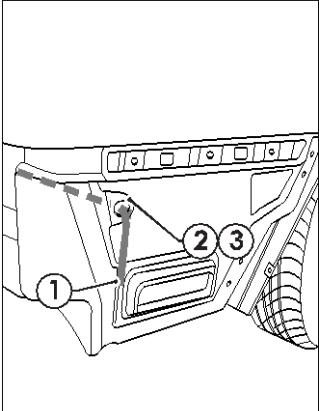
www.haymanreese.com.au



HAYMAN REESE
PART No: 03212RW
LDV G10 CL4

INSTALLATION INSTRUCTIONS

PLEASE ENSURE THAT INSTRUCTIONS ARE UNDERSTOOD PRIOR TO FITMENT
PLACE THESE INSTRUCTIONS IN THE VEHICLE'S GLOVEBOX AFTER INSTALLATION IS COMPLETED

<p>30. Identify the 10-way Female Connector (1) located behind the lower RHS rear trim</p> <p>31. Scotch-lock the 1-Way Terminal with Black/White wire (2) to the Blue wire on Pin G of the 10-way Female Connector (1).</p>	
<p>32. Dislodge the LHS tail light (1).</p> <p>33. Locate the Yellow wire (2) behind the vehicle grommet (3).</p> <p>34. Scotch-lock the 1-way Terminal with Yellow/Black wire (4) to the Yellow Wire (2).</p>	
<p>35. Route the 7 bare terminals (1) and 1-way White connector out of the 25mm hole (2) on the lower rear RHS of the vehicle.</p> <p>36. Seat the Grommet (3) onto the 25mm hole (2).</p> <p>37. Continue routing the harness down and under toward vehicle towbar.</p>	

Hayman Reese (Cequent)
PO Box 4050, Dandenong South VIC 3164
Phone 1800 812 017 Email info@haymanreese.com.au

www.haymanreese.com.au



HAYMAN REESE
PART No: 03212RW
LDV G10 CL4

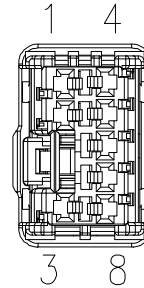
INSTALLATION INSTRUCTIONS

PLEASE ENSURE THAT INSTRUCTIONS ARE UNDERSTOOD PRIOR TO FITMENT
PLACE THESE INSTRUCTIONS IN THE VEHICLE'S GLOVEBOX AFTER INSTALLATION IS COMPLETED

38. House the 7 bare terminals into the provided 8-way blue Connector as per following table:

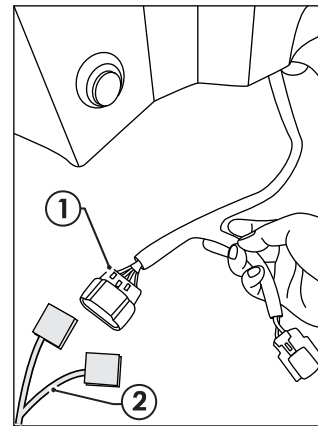
Terminal	Colour	Function
1	Yellow	Left Indicator
2	Black	Reverse
3	White	Ground
4	Green	Right Indicator
5	Blue	Service Brake
6	Red	Brake
7	Brown	Tail
8	-	-

Ensure the connector locking tab is secured after installation.

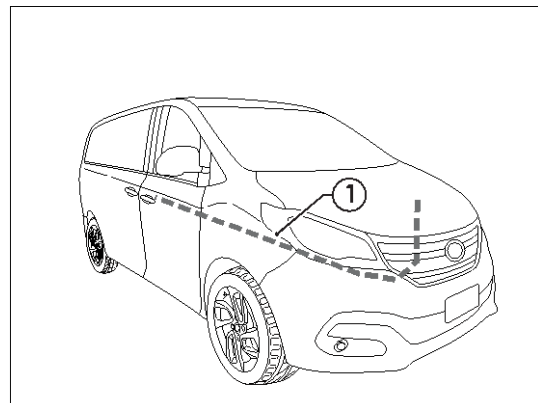


8-way female connector
(front view)

39. Locate the 10-way Female connector (1) between vehicle and rear fascia.
40. Patch RPA disable cable (2) onto the 10-way female connector (1).



41. Starting from the positive battery terminal, route the power harness (1) (P/N: 04825) down through the engine bay and along the under body, toward the rear of the vehicle.
42. Follow existing wiring where possible and cable tie (not supplied) in place.
43. At the rear of the vehicle, connect the 1-way trailer connector to the mating 1-way connector on the power harness.



Hayman Reese (Cequent)
PO Box 4050, Dandenong South VIC 3164
Phone 1800 812 017 Email info@haymanreese.com.au

www.haymanreese.com.au

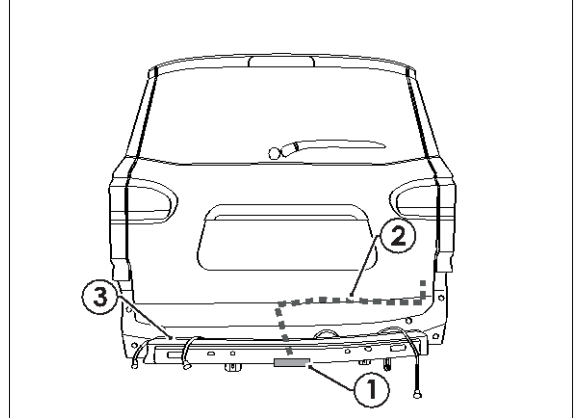


HAYMAN REESE
PART No: 03212RW
LDV G10 CL4

INSTALLATION INSTRUCTIONS

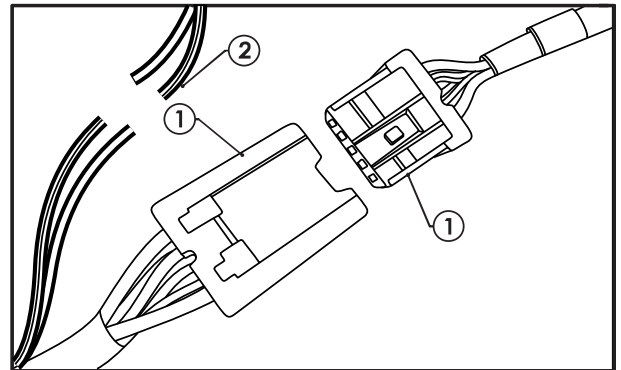
PLEASE ENSURE THAT INSTRUCTIONS ARE UNDERSTOOD PRIOR TO FITMENT
PLACE THESE INSTRUCTIONS IN THE VEHICLE'S GLOVEBOX AFTER INSTALLATION IS COMPLETED

44. Mount the trailer socket (1) from the tail harness (P/N: 04937) using M4 fasteners (not supplied).
45. Route the tail harness (2) up and across toward the RHS.



46. Connect blue connectors together (1).
47. Crimp the RPA disable cable (2) to the Tail connector as per the table, ensuring wires are properly insulated after crimping.

RPA Disable wire colour	Tail harness wire colour
Black	Grey
Black / White	Grey / Black



48. Test the Trailer Harness function using a light board or multi-meter.
49. Secure all harnesses using cable ties (not supplied).
50. Re-fit removed parts and secure all fasteners, ensuring there are no squeaks or rattles.
51. Place the instructions in the glove box after fitment.

Hayman Reese (Cequent)
PO Box 4050, Dandenong South VIC 3164
Phone 1800 812 017 Email info@haymanreese.com.au

www.haymanreese.com.au





FITTING INSTRUCTIONS

Smart Pin (55070BL)

• These fitting instructions are supplied to ensure understanding of how the SMART PIN should be fitted and used correctly.

• Once installed, we recommend **ALL** instructions are kept and placed in the vehicle glove box.

NOTE: Routine maintenance and inspection of the towbar & SMART PIN is required. Regularly inspect for wear and check the tightness of the SMART PIN NUT. Follow instructions below to retighten the nut when necessary.

***Do not tow with your vehicle if the R CLIP or the SMART PIN NUT is loose or missing. Replacement parts are available from your Hayman Reese Distributor.**

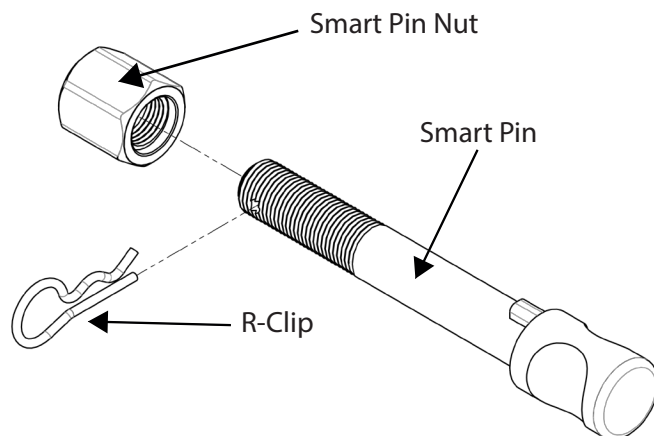


Fig 1. Smart Pin assembly

STEP 1

Insert Trailer Ball Mount (TBM) into towbar HITCHBOX, aligning hole in TBM SHANK with hole in HITCHBOX (Fig. 2).

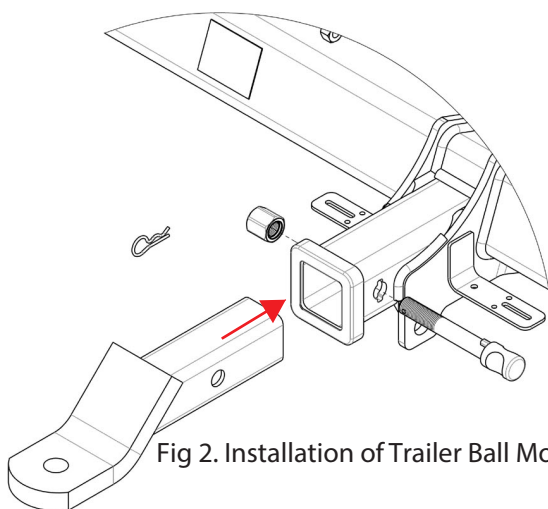


Fig 2. Installation of Trailer Ball Mount

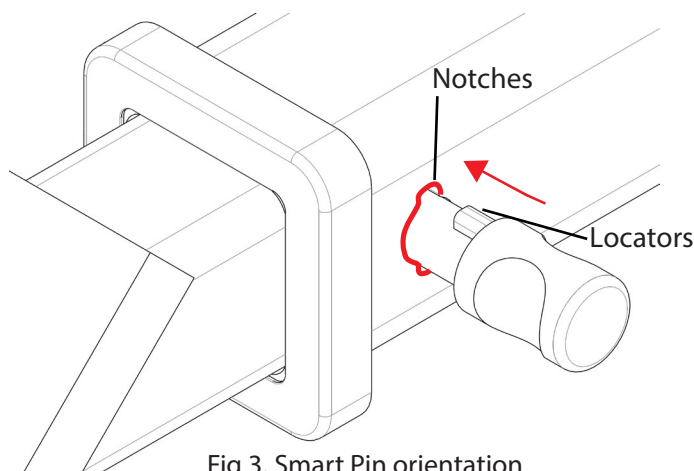


Fig 3. Smart Pin orientation

STEP 2

Insert SMART PIN through hole in HITCHBOX and hole in TBM SHANK; ensure the LOCATORS are inserted into the NOTCHES in the HITCHBOX (Fig. 3).

STEP 3

Screw SMART PIN NUT onto SMART PIN; tighten SMART PIN NUT until finger tight, ensuring TBM is restrained from movement.

STEP 4

Tighten SMART PIN NUT by turning nut a further 1/8th of a turn in the clockwise direction using a 24mm spanner (Fig 4).

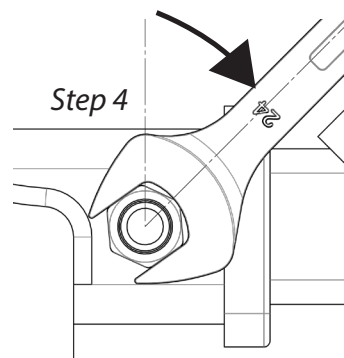


Fig 4. Tightening of Smart Pin Nut

STEP 5

Install SMART PIN R CLIP through the hole on the SMART PIN (Fig. 1).