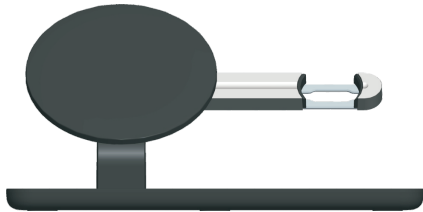


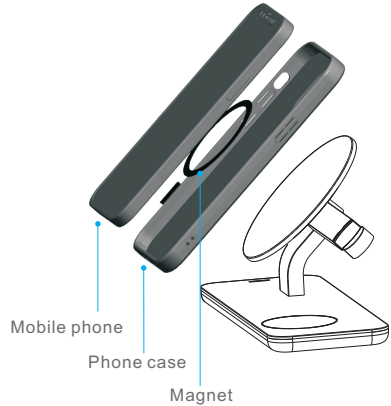
Wireless Charger User Guide



Model:A5

About Magnet

This wireless charger is designed attracted-magnetically, iPhone12 series mobile phone can be attracted instantly. Please use Magsafe phone case for perfect attracting and wireless charging if you need a protective case.



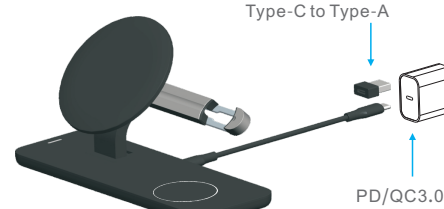
Tips:
Magsafe phone case need to be purchased separately.

Charging status



About adapter

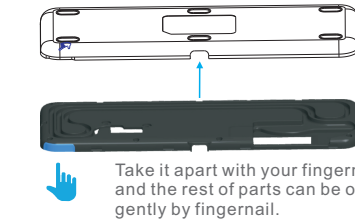
The Max Output: Apple7.5W, Samsung 10W. Please use PD or QC 3.0 adapter.
The wireless charging can be 5W only if choosing a 5V2A adapter.



Tips:
• PD/QC 3.0 adapter need to be purchased separately.
• Do not use output of 5V1A adaptor, 5W low-power adaptor will make wireless charger to work unsteadily.

About steps to assemble Apple watch magnetic charger cable

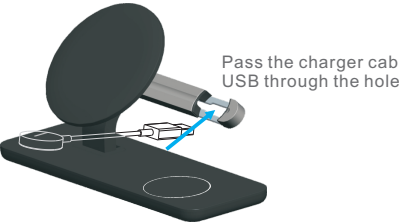
Step 1: Disassemble back-case.



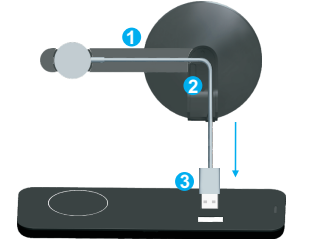
Step2: Disassemble metal parts.



Step3: Apple watch magnetic charger cable layout 1.



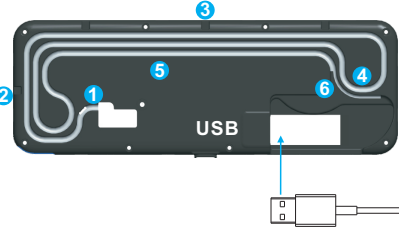
Step4: Apple watch magnetic charger cable layout 2.



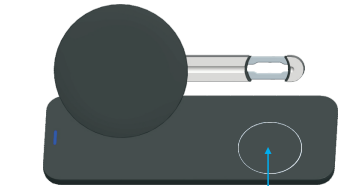
Take charger cable in the groove by following 1-3 order, pass the USD though the bottom hole, as shown in the picture.

Step5: Apple watch magnetic charger cable layout 3.

Take charger cable in the groove by following 1-6 order, insert the USB into the PCBA, buckle the back case, as shown in the picture, The whole charger cable layout is finished.



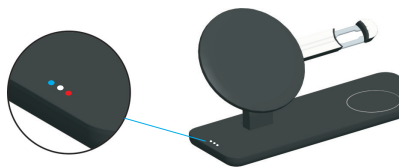
About Airpods



Put the aripods in the center of the charging area for wireless charging.

LED indicator light for iPhone

- White light: Standby
- Blue light: Charging
- Red light flash: Error



White LED light and blue LED light will be darken after 15 minutes, not influence your sleep.

Product Specification

Fast Wireless Charger
• Input: 5V=2A/9V=1.67A/12V=1.5A
• Output: 5V=1.0A/9V=1.20A
• Charging Efficiency: 70%

⚠ The LED light turns red during wireless charging to indicate a charging failure.

The following situation can cause failures, like charging slowly, stop charging, over-temperature for charging position.
1. The adapter is not run up to standard (No PC USB output power supply).
2. The charging cable is not up to standard.
3. The phone case is too thick (within 2mm thickness phone case recommended).
4. There is metal on the back of cell phone or phone case.
5. Smartphone does not support wireless charging function.

Attention

1. Please keep the charger away from water or other liquid.
2. If you need to clean the charger, please make sure it is not connected to power supply.
3. Using Environment temperature remains -20~45℃.

7## † o
#

u
"
h 7## k u
u

= @

- - k
- - @
- - #

- - # ut
u 7## k \ two conditions:

(1) This device may not cause harmful interference, and (2) this device must accept any interference received, including interference that may cause undesired operation.

k7 - °

-