

Jabra Talk 45



User manual

1. WELCOME.....	3
2. HEADSET OVERVIEW.....	4
3. HOW TO WEAR	5
3.1 CHANGE EARGELS	
3.2 ATTACHING THE EARHOOK	
4. HOW TO CHARGE THE BATTERY.....	7
5. HOW TO CONNECT	8
5.1 CONNECT TO MOBILE DEVICE	
5.2 CONNECT TO MOBILE DEVICE (NFC)	
6. HOW TO USE	10
6.1 MULTIPLE CALL HANDLING	
7. SUPPORT	12
7.1 FAQ	
7.2 HOW TO CARE FOR YOUR HEADSET	

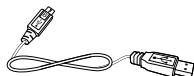
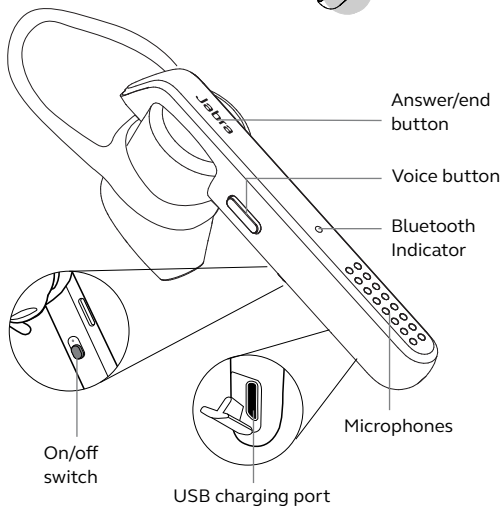
1. WELCOME

Thank you for using the Jabra Talk 45. We hope you will enjoy it!

JABRA TALK 45 FEATURES

- Clear calls - HD voice (phone and network dependent) and two microphones
- Noise cancelling - advanced technology for clear, noise-free calls
- Long lasting - up to 6 hours of calls, and up to 8 days of standby time
- Stream from your phone - music, podcasts and GPS directions
- Voice Control - dedicated button for Siri® and Google Assistant™

2. HEADSET OVERVIEW



USB cable



Eargels



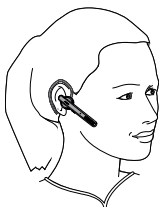
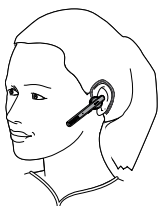
Earhooks



Car charger

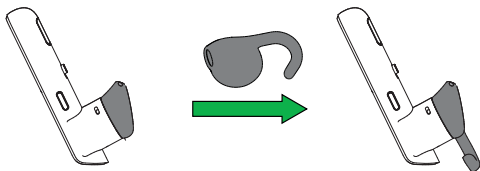
3. HOW TO WEAR

The headset can be worn with or without the earhook, on the left or right ear. Additional earhooks and eargels are available in the pack.



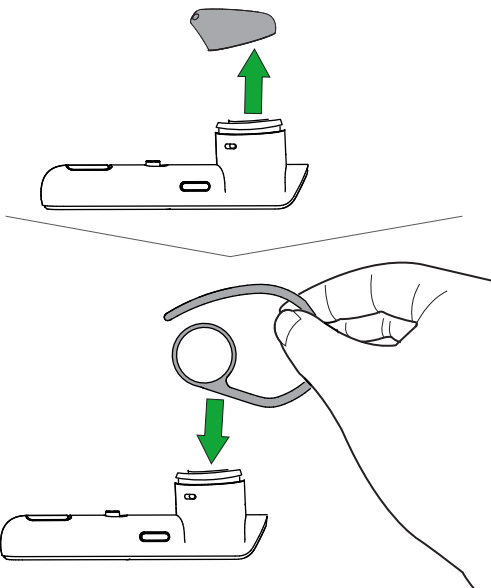
3.1 CHANGE EARGELS

Choose between different ergo-designed eargels for optimal fit and comfort.



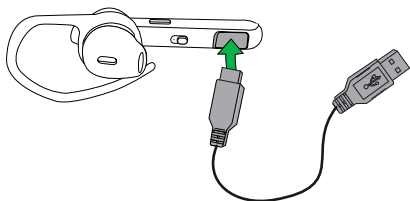
3.2 ATTACHING THE EARHOOK

The earhook can be attached to the headset if the earhook fit is preferred.



4. HOW TO CHARGE THE BATTERY

1. Pull back the charging cover on the headset to expose the USB charging port.
2. Connect the headset to a USB port using the USB cable.



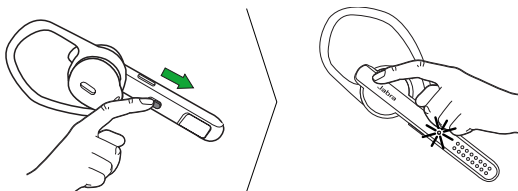
NOTE: For safety reasons, it is recommended not to use the headset while it is charging.

It takes approx. 2 hours to fully charge the headset.

5. HOW TO CONNECT

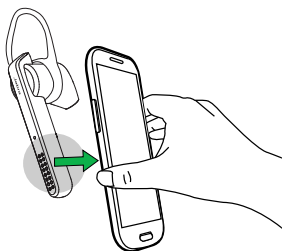
5.1 CONNECT TO MOBILE DEVICE

1. Turn the headset on (set the **On/off** switch to the On position).
2. Press and hold (3 secs) the **Answer/end** button until the Bluetooth indicator flashes blue, and pairing mode is announced in the headset.
3. Follow the voice-guided pairing instructions to pair to your Bluetooth device.

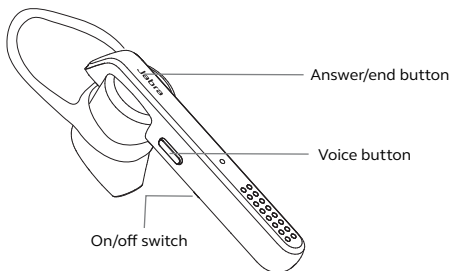




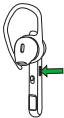
5.2 CONNECT TO MOBILE DEVICE (NFC)

1. Ensure that NFC is enabled on your mobile device.
2. Slowly slide the NFC zone of the headset against the NFC zone of the mobile device until a connection is confirmed.




6. HOW TO USE



	FUNCTION	ACTION
	On/Off	Slide the On/off switch
	Answer/end call	Tap the Answer/end button, or say 'Answer'
	Reject call	Double-tap the Answer/end button, or say 'Ignore'
	Redial last number	Double-tap the Answer/end button when not on a call
	Activate voice controls (phone dependent)	Tap the Voice button for voice dialing (e.g. Siri/Google Now). Press and hold (1 sec) the Voice button for voice commands
	Mute/unmute	Tap the Voice button when on a call

6.1 MULTIPLE CALL HANDLING

The headset can accept and handle multiple calls simultaneously.

FUNCTION	ACTION
End current call and answer incoming call	Tap the Answer/end button
 Switch between held call and active call	Press and hold (2 secs) the Answer/end button
Put current call on hold and answer incoming call	Press and hold (2 secs) the Answer/end button
Reject incoming call	Double-tap the Answer/end button

7. SUPPORT

7.1 FAQ

View the comprehensive FAQ on Jabra.com/talk45.

7.2 HOW TO CARE FOR YOUR HEADSET

- Always store the headset with the power off and safely protected.
- Avoid storage at extreme temperatures (above 70°C/158°F or below -10°C/14°F). This can shorten battery life and may affect headset operation.
- Do not expose the headset to rain or other liquids.

© 2018 GN Audio. All rights reserved. Jabra® is a registered trademark of GN Audio. The Bluetooth® word mark and logos are owned by the Bluetooth SIG, Inc. and any use of such marks by GN Audio is under license.

Made in China
MODEL: OTE18



Declaration of Conformity can be found on
www.jabra.com/doc