



SERVICE PARTS LIST

BULLETIN NO.
54-26-2980

SPECIFY CATALOG NO. AND SERIAL NO. WHEN ORDERING PARTS		REVISED BULLETIN	DATE
M18™ FUEL™ ONE KEY™ 1" Extended Impact Wrench			Oct. 2020
CATALOG NO.	2869-20	STARTING SERIAL	L12A
		WIRING INSTRUCTION See Page 3	

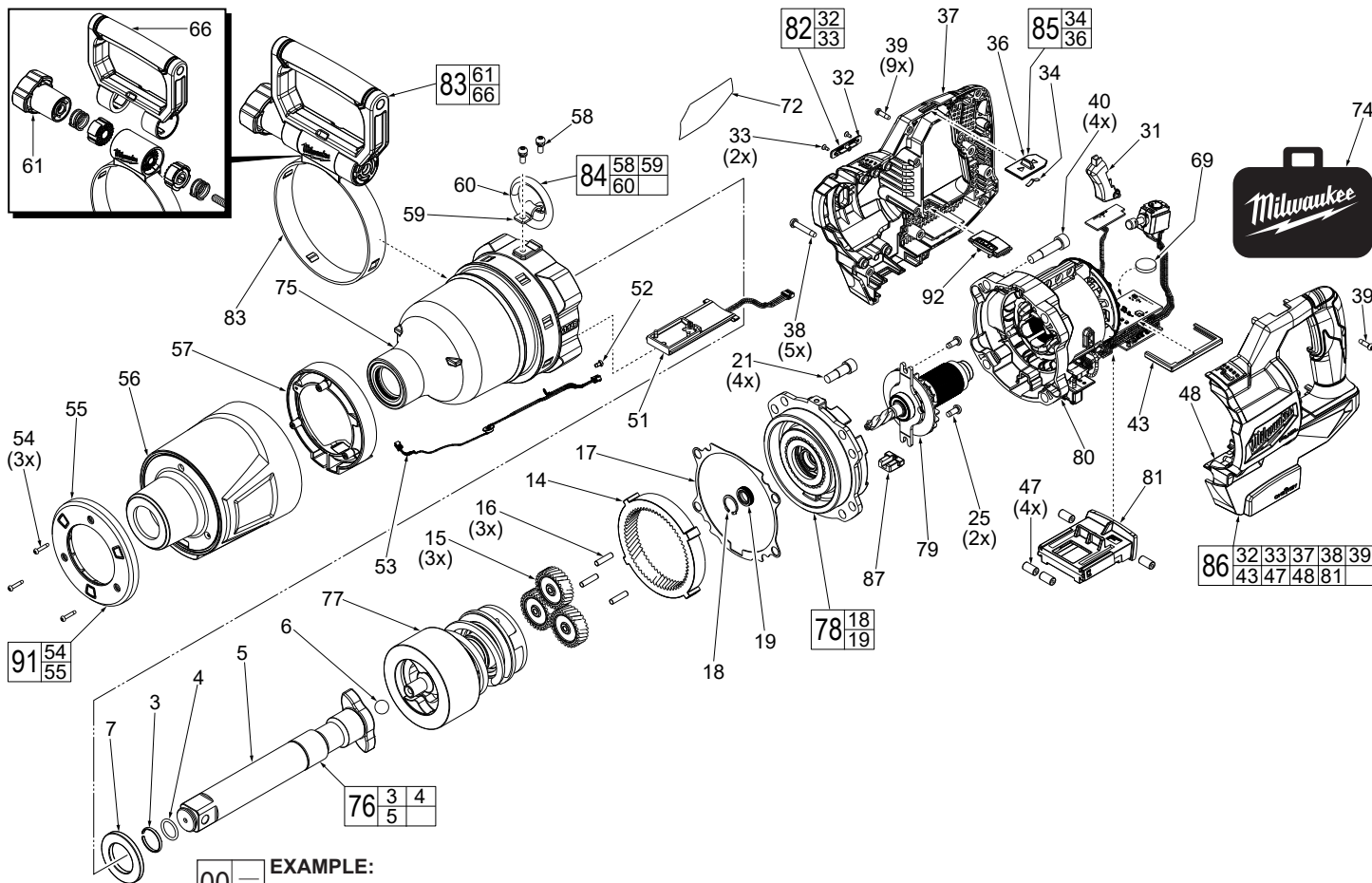


FIG.	PART NO.	DESCRIPTION OF PART	NO. REQ.
55	-----	Work Light	(1)
56	49-16-2566	Rubber Boot - Extended Anvil	(1)
57	45-36-7017	Spacer	(1)
58	-----	M5 x 13mm PH T-25 Scr. w/ Washer	(2)
59	-----	Hook Ring Bracket	(1)
60	-----	Hook Ring	(1)
61	45-94-0024	Knob with Insert Nut	(1)
66	43-62-2868	Side Handle Grip	(1)
69	-----	3V Coin Cell Battery (CR2032H)	(1)
72	12-20-2800	Service Nameplate	(1)
74	42-55-2675	M18 FUEL Tool Bag	(1)
75	28-50-2565	Front Gearcase Assembly-Ext. Anvil	(1)
76	42-06-2785	Extended Anvil Assembly	(1)
77	14-46-9195	Impacting Assembly	(1)
78	44-66-6195	Rear Gearcase Assembly	(1)
79	16-01-2870	Rotor Assembly	(1)
80	14-20-3175	Electronics Assembly	(1)
81	14-50-7005	Isolator Assembly	(1)
82	14-67-0290	Coin Cell Door Kit	(1)
83	14-34-6000	Side Handle Assembly	(1)
84	14-46-2867	Tether Ring Kit	(1)
85	45-24-2560	Forward/Reverse Shuttle Kit	(1)
86	31-44-5397	Housing Kit	(1)
87	44-68-0710	Rubber Plug	(1)
91	22-09-2615	LED Assembly	(1)
92	45-24-2565	Mode Selector Assembly	(1)

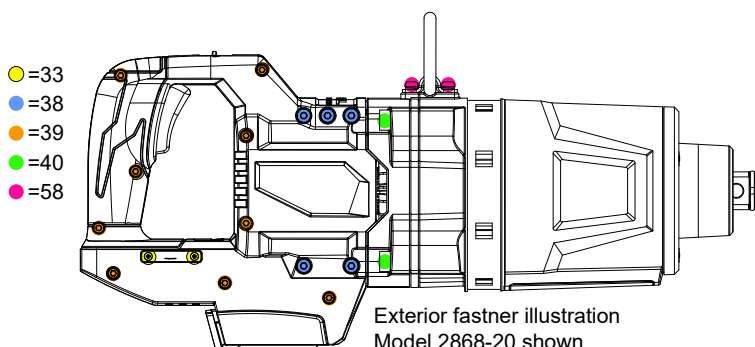
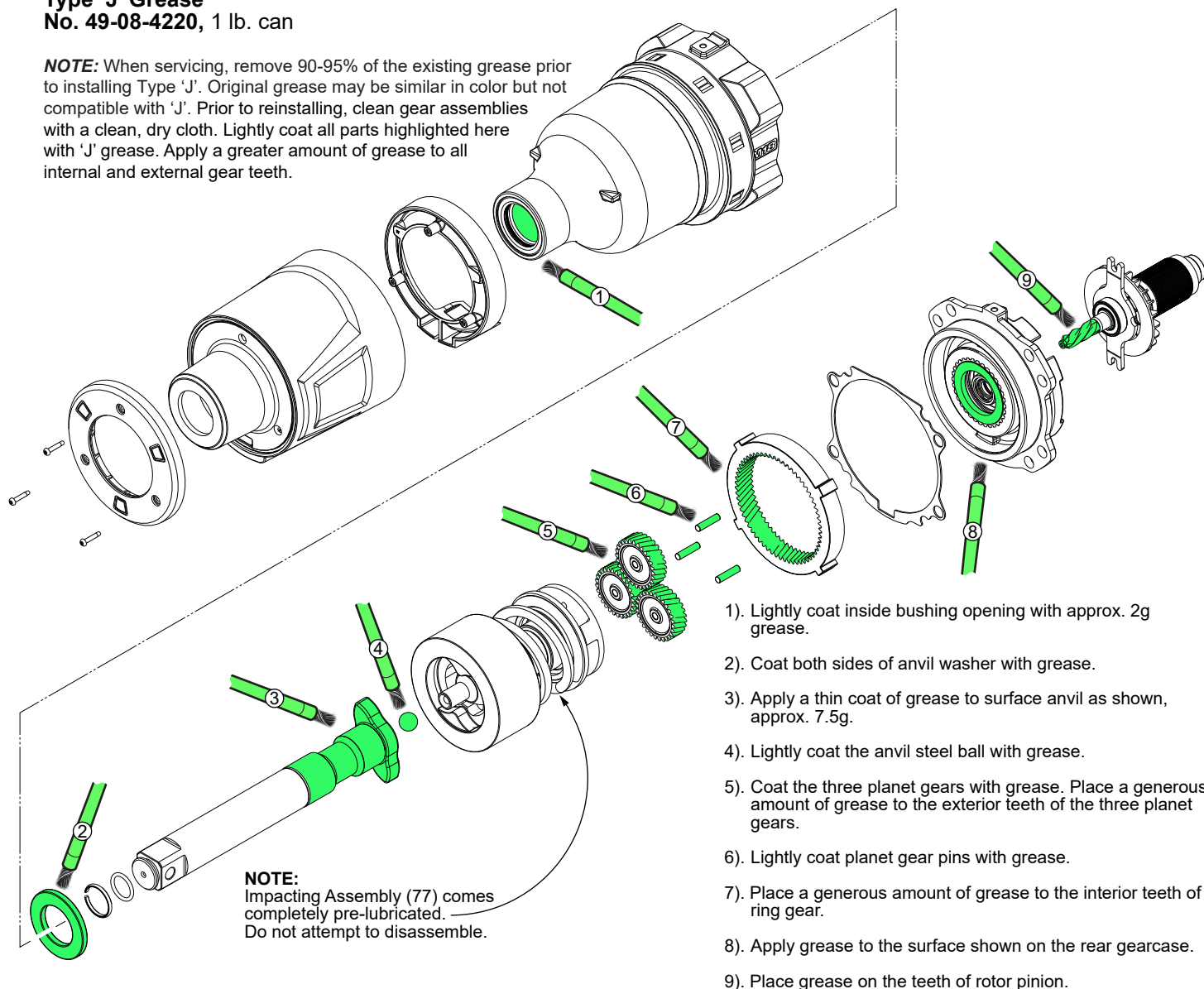
MILWAUKEE TOOL • www.milwaukeetool.com
13135 W. Lisbon Road, Brookfield, Wisc. 53005
Drwg. 1

LUBRICATION NOTES:

Type 'J' Grease

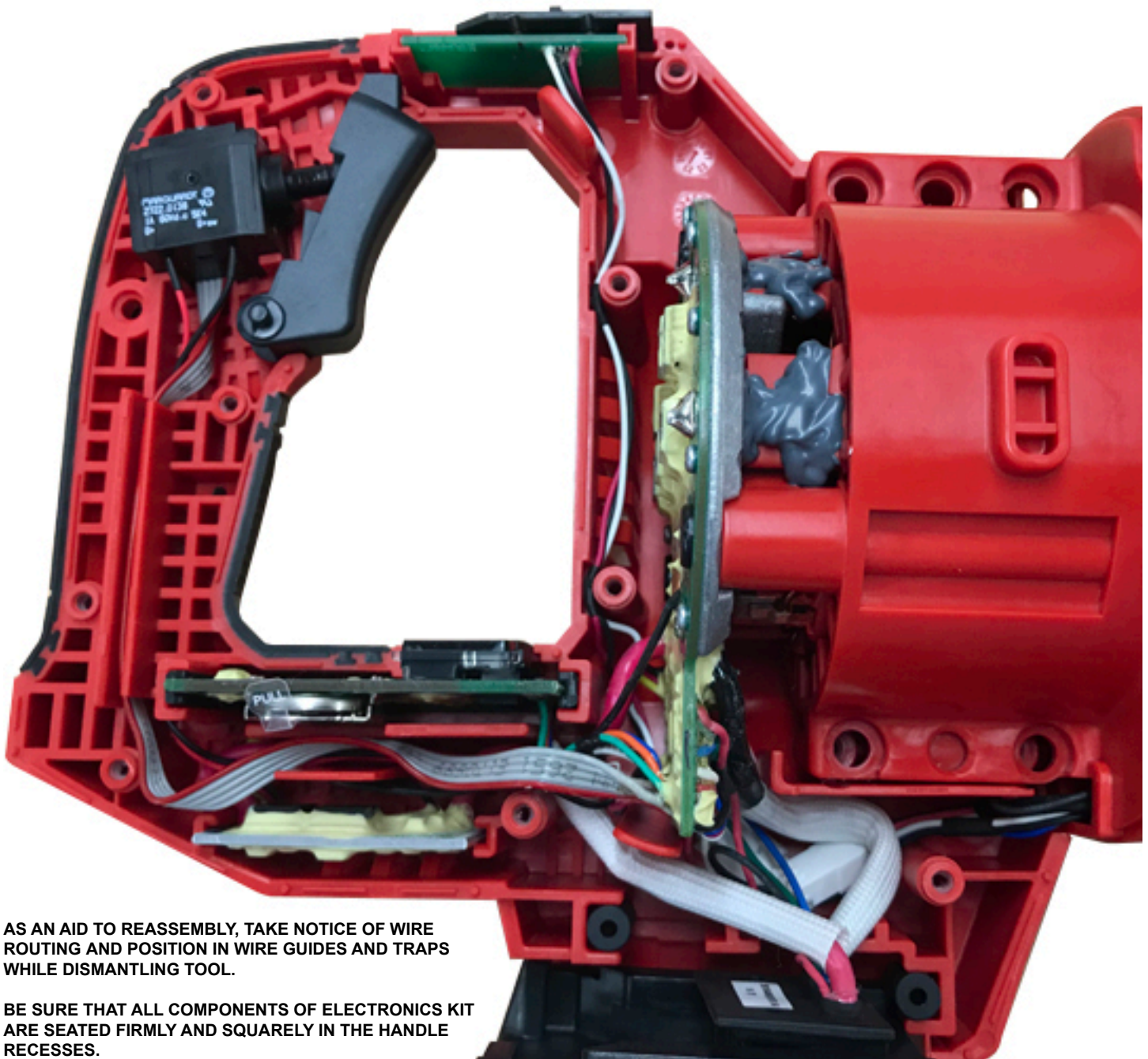
No. 49-08-4220, 1 lb. can

NOTE: When servicing, remove 90-95% of the existing grease prior to installing Type 'J'. Original grease may be similar in color but not compatible with 'J'. Prior to reinstalling, clean gear assemblies with a clean, dry cloth. Lightly coat all parts highlighted here with 'J' grease. Apply a greater amount of grease to all internal and external gear teeth.



SCREW TORQUE SPECIFICATIONS

FIG.	PART NO.	WHERE USED	SEAT TORQUE	
			(KG/CM)	(IN/LBS)
21	06-82-8990	Rear Gearcase Assy.	150±15	130±13
25	05-74-1030	Bearing Plate-Rotor	53±5	46±4
33	-----	Coin Cell Door	4	3
38	05-81-2005	Right Housing Half	30±3	26±2
39	06-82-8895	R & L Housing Halves	15±2	13±1
40	06-82-9615	Motor Cage-Elect. Assy.	150±15	130±13
52	06-82-5270	Front Gearcase-Ground	17±2	14±1
54	-----	LED Assembly	8±1	7±1
58	-----	Hook Ring Bracket	95±5	82±4



AS AN AID TO REASSEMBLY, TAKE NOTICE OF WIRE ROUTING AND POSITION IN WIRE GUIDES AND TRAPS WHILE DISMANTLING TOOL.

BE SURE THAT ALL COMPONENTS OF ELECTRONICS KIT ARE SEATED FIRMLY AND SQUARELY IN THE HANDLE RECESSES.

AVOID PINCHED WIRES, BE SURE THAT ALL WIRES AND SLEEVES ARE PRESSED COMPLETELY DOWN IN WIRE GUIDES AND TRAPS.

PRIOR TO SECURING THE HANDLE COVER ONTO THE HANDLE SUPPORT, BE SURE THAT THERE ARE NO INTERFERENCES.

BEFORE INSTALLING THE BATTERY, CHECK FOR PROPER FUNCTIONALITY OF SHUTTLE AND TRIGGERS.

INSTALL BATTERY AND DEPRESS SWITCH TRIGGER TO ASSURE TOOL IS OPERATING PROPERLY.