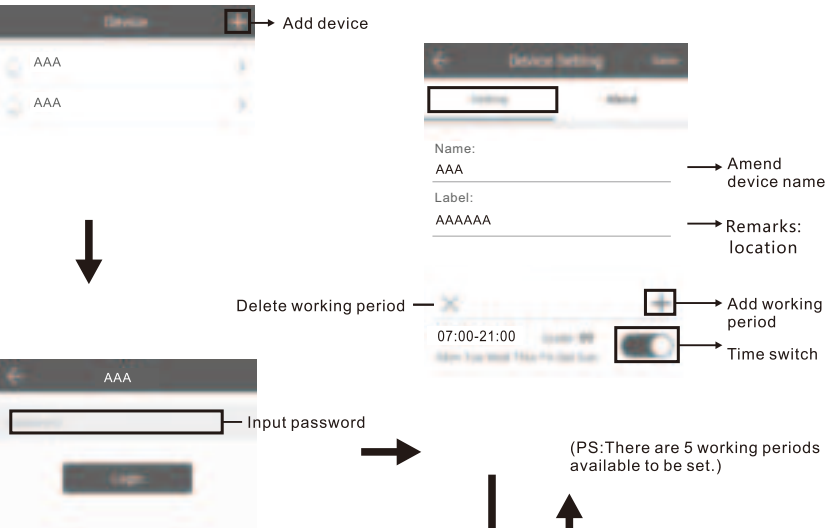
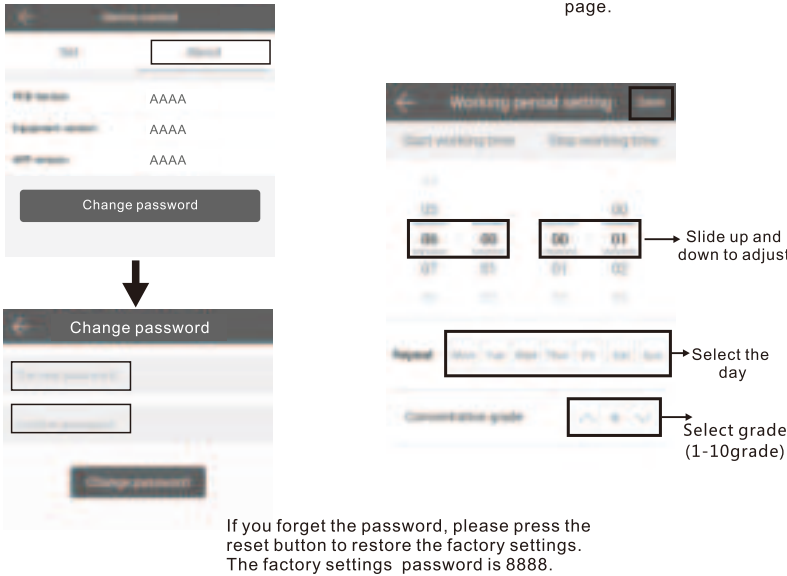


Instructions

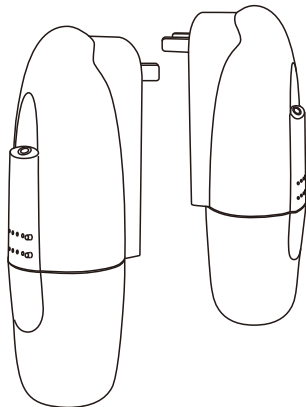
Where to get the app:  
Please search "scent marketing" in Google play or App store and you will find it.



Amend password



PRODUCT MANUAL  
SCENT MARKETING



☐ 103 ☒ 103-APP

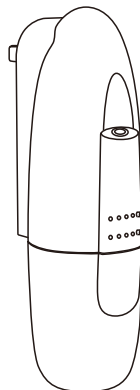
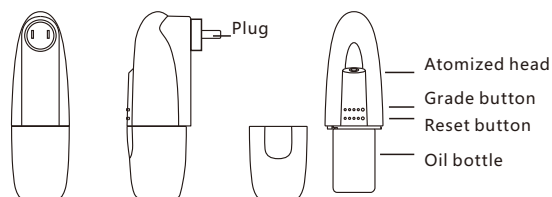
Troubleshooting

Before having the machine repaired, please try to diagnose the problem first with the bellow instructions

Symptom	Remedy
Does not diffuse	<ul style="list-style-type: none"><li>- Whether the machine is in "not working period". If yes, it won't spray.</li><li>- Check whether the air pump is damaged. If yes, replace it with a new one.</li></ul>
Spray little	<ul style="list-style-type: none"><li>- Check whether the gasket is damaged or loose. Please adjust it or replace it with a new one.</li><li>- Check whether the atomized core is plugged; clear it with alcohol or replace it with a new one</li></ul>
Oil spill	<ul style="list-style-type: none"><li>- Check whether the atomized head is damaged</li></ul>
Oil overflow	<ul style="list-style-type: none"><li>- Check whether the oil bottle is loose, please install it correctly</li><li>- Check whether the gasket of the atomized head is damaged; if yes, please replace it with another one.</li><li>- Please keep the machine vertical; Tilt or lie flatly will cause the oil overflow</li></ul>

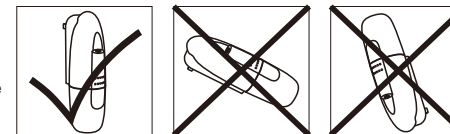
## Specification

[ Product ]	: AE103
[ Size ]	: 122*65*214mm
[ Volume ]	: 100ml
[ Weight ]	: 300g
[ Coverage ]	: 100m <sup>2</sup>
[ Power ]	: AC100V-240V 60/60HZ



## Warning

1. Please keep the machine vertical. Tilt or lie flatly may cause the oil overflow. The efficiency of the machine may be affected.
2. Shall not modify, disassemble or repair the machine. If any failure happens to the machine, please contact our technical personnel.



## Equipment cleaning

The machine need to be cleaned when below situation happens:

1. You're about to change another kind of essential oils
2. The atomization volume goes weak

### Cleaning steps:

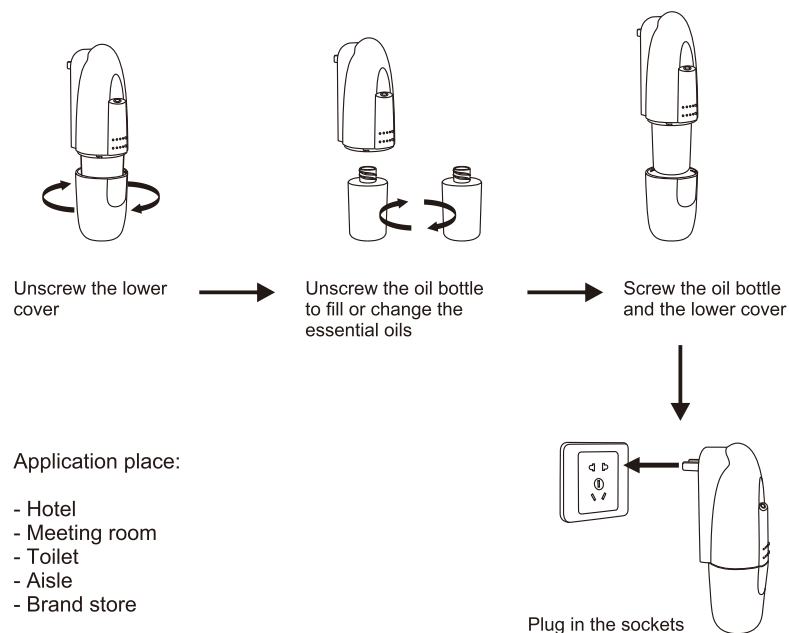
1. Unscrew the lower cover and take out the oil bottle
2. Find a larger container and fill the industrial alcohol up. Then soak the bottle for 5-10 minutes.
3. Airing the bottle.

## Concentration and consumption

Grade	G1	G2	G3	G4
Pausing time(s)	285s	135s	85s	60s
Consumption(ml/hr)	0.07	0.15	0.23	0.30

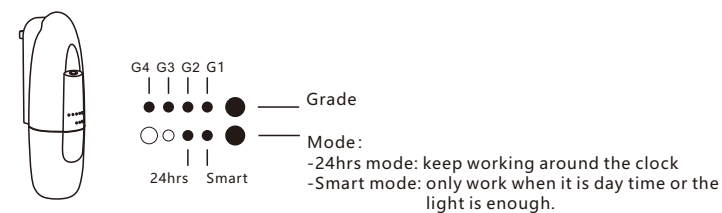
Notes: 1.The working time above of each grade is 15s.  
2.Different grade and oil may be with different consumption.

## Installation method



## Operating instructions

### Button control version: easy to handle and light sensor mode



### APP version: Controlled by APP, more convenient and intelligent

