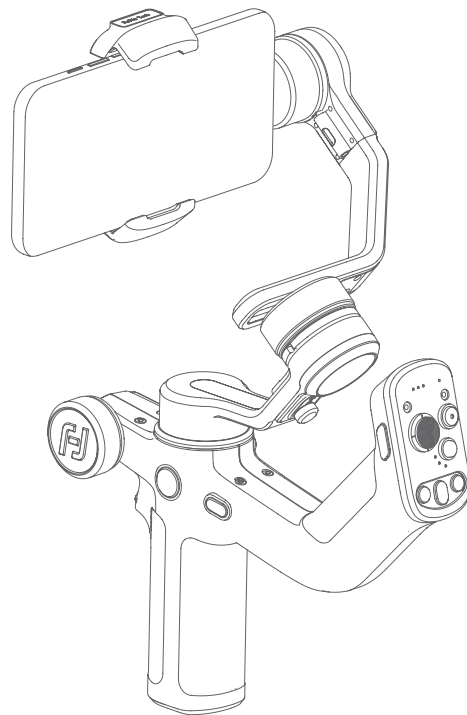


# SCORP Mini P

Quick Start Guide V1.0

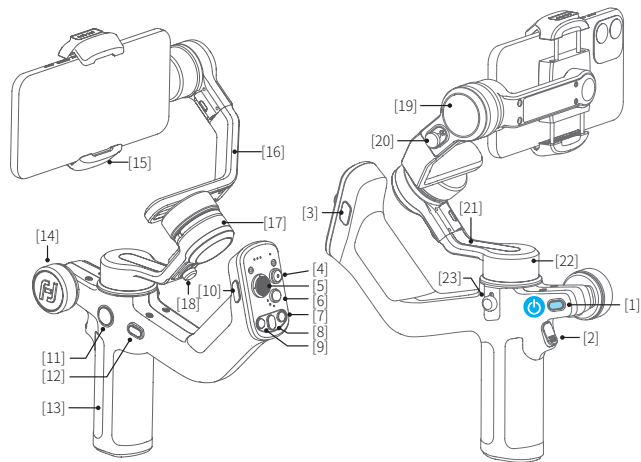
EN CN JP DE FR ES IT

Tutorial Videos



## 1. Overview

\* Not include smartphone.



- [1] Power button
- [2] Trigger button
- [3] F2 button
- [4] Shutter button
- [5] Joystick
- [6] Mode button
- [7] R button
- [8] Auto rotation button
- [9] L button
- [10] F1 button
- [11] Knob function switching button
- [12] FPV button

- [13] Handle
- [14] Multifunction knob
- [15] Smartphone holder
- [16] Cross arm
- [17] Roll axis
- [18] Roll lock
- [19] Tilt axis
- [20] Tilt lock
- [21] Cross arm
- [22] Pan axis
- [23] Pan lock

EN

## User manual

Scan the QR code to get the latest user manual or download it from the official website.

<https://www.feiyu-tech.com/feiyu-scorp-mini-p/>



## Download the App

Scan the QR code to download the app, or search for "Feiyu ON" in the App Store or Google Play.

\* Requires iOS 9.0 or above, Android 6.0 or above.



iOS

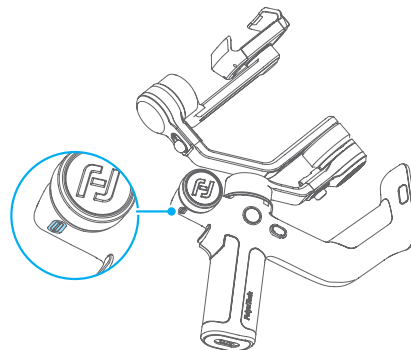


Android

## 2. Getting started

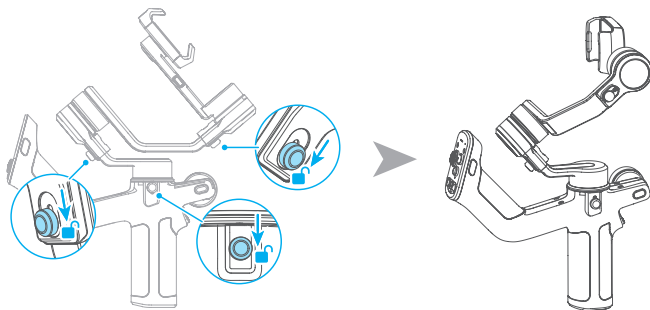
### 2.1 Charging

Please fully charge the battery before power on the gimbal for the first time. Charging with USB-C cable, supports quick charge.



## 2.2 Adjust the gimbal to gimbal balancing position

The gimbal is folded by default, please unlock all the three axes and adjust the gimbal to gimbal balancing position, and then lock the three axes.



Gimbal folded position

Gimbal balancing position

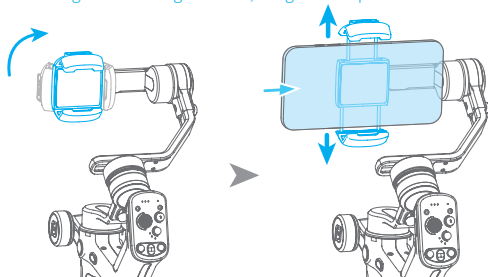
## 3. Mounting the Smartphone

Make sure you have completed all the steps which mentioned in “chapter 2. Getting started” and the gimbal is adjusted to **gimbal balancing position**. It is recommended to remove the smartphone case before mounting the smartphone.

**Take horizontal mounting as an example:**

- (1) Power off the gimbal or enter sleep mode first, then rotate the smartphone holder to make it vertical to prepare for landscape shooting.
- (2) Extend the smartphone holder, and put your smartphone in, keep the smartphone holder in center.

**Note:** before switching the mounting direction, the gimbal required to be off or in sleep mode.



EN

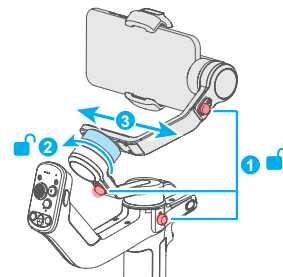
## 4. Gimbal Balancing

Please balance the gimbal before powering it on. Before balance the gimbal, please power off it or enter sleep mode.



Tutorial Videos

- (1) Unlock the three axis locks ❶, observe the tilt direction of the mobile phone.
- (2) If the phone is tilted to one end, it means that the center of gravity is toward this end, and the fixing knob needs to be loosened ❷, and then move the cross arm in the opposite direction ❸, until the cross arm maintains a horizontal balance.
- (3) tighten the fixing knob ❷.

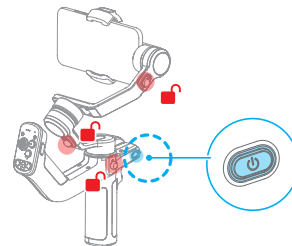


## 5. Operation

### 5.1 Power ON/ OFF

Before power on the gimbal, make sure you have balanced gimbal, and unlocked all the three axes. If you haven't unlocked all the 3 axes, gimbal will enter sleep mode to protect itself. Please single tap power button to wake up gimbal after unlocked all the 3 axes.

Long press the power button and release it when you hear the beep sound to power on/ off.



## 5.2 Follow mode introduction

**PF:** Pan follow, only the pan axis follows the movement of user's hand.

**PTF:** Pan and tilt follow, where both the pan and tilt axes follow the movement of user's hand, but roll axis does not.

**FPV:** Pan, tilt and roll follow, where all 3 axes follow the movement of user's hand.

**Lock:** All 3 axes do not follow the movement of user's hand, gimbal keeps the direction of the camera fixed.

**FFW:** Flash follow, where all 3 axes follow the movement of user's hand in high follow speed.

## 5.3 Button operation



### Power button

**Long press:** Power on/off  
**Single tap:** Wake up  
**Double tap:** Enter sleep mode



### Trigger button

**Single tap:** face tracking  
**Double tap:** Recenter  
**Triple tap:** Enter/Exit selfie mode (Pan axis turn 180°)  
**Press and hold:** PTF (Release to exit)  
 You can custom the function via APP



### Shutter button

**Press half way:** Focus  
**Single tap (Fully):** Start/Stop recording  
**Long press (Fully):** Take photo  
 Need to connect with smartphone.



### L button

**Single tap:** Turn left continuously  
**Single tap again:** Switch rotating speed (Switch cyclically among Slow/Med/Fast orderly, the preset speed is Med)

Active in auto rotation mode



### Mode button

**Single tap:** Switch among PF/PTF (Default)/FPV mode (Switch in turn)  
**Tap five times:** Horizon calibration (Single tap to wake up after calibration completed)



### Joystick

**Push:** Control the movement of the tilt and pan axes.



### Auto rotation button

**Single tap:** Enter auto rotation mode  
**Single tap again:**  
 (1) Exit auto rotation mode (When gimbal is not rotating)  
 (2) Pause the rotation (When gimbal is rotating)



### R button

**Single tap:** Turn right continuously  
**Single tap again:** Switch rotating speed (Switch cyclically among Slow/Med/Fast orderly, the preset speed is Med)

Active in auto rotation mode

## EN



### F1 button

**Double tap:** Enter/Exit portrait mode (in the Feiyu ON App)



### FPV button

**Single tap:** Enter/Exit FPV mode



### Knob function switching button

#### Single tap:

(1) Switch the control object while controlling the movement of the 3 axes (Tilt/Pan/Roll)  
 (2) When in electronic focus/zoom control state, single tap to switch between electronic focus and electronic zoom (Feiyu ON App)

**Long press:** Switch the control options of Multifunction knob in turn (The movement of the 3 axes/Electronic focus, electronic zoom)



### F2 button

**Double tap:** Enter FFW mode



### Multifunction knob

**Turn:** (1) Control the movement of the roll, tilt and pan axes.  
 (2) focus/electronic zoom

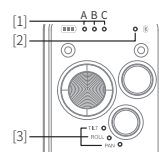
Set current control option as option (1) or (2) through knob function switching button or swipe up in home page.

- More button function introductions please refer to the user manual.

## 5.4 Indicator

- [1] Battery indicator A/B/C
- [2] Bluetooth indicator
- [3] Follow status indicator

TILT = Tilt axis  
 ROLL = Roll axis  
 PAN = Pan axis



The indicator is on which means the corresponding axis follows the movement of user's hand.

### Bluetooth indicator instruction

Bluetooth status	Indicator
Bluetooth connected	●
Bluetooth disconnected	○
Unpairing Bluetooth*	●●●

\*Clear Bluetooth connection: push the joystick down and hold it, then triple tap the power button

## Follow status indicator instruction

Mode	Follow status indicator		
	TILT	ROLL	PAN
Lock	○	○	○
PF	○	○	●
PTF	●	○	●
FPV	●	●	●
FFW	●●	●●	●●
Auto rotation	●	●	●

## Battery indicator instruction

Battery level	Battery indicator		
	A	B	C
Fully charged	●	●	●
High level of battery	●	●	●●●
Medium level of battery	●	●●●	○
Low power	●●●	○	○
Low power, will auto power off	●	○	○

## Packing List

SCORP-Mini P ×1, Tripod ×1, USB-C cable ×1, Manual ×1

## Other status indicator instruction

Status	Battery indicator		
	A	B	C
Sleep mode	●●●●	●●●●	
Initializing	●●●	●●●	●●●
Initialization failed	●●●	●●●	●●●
Upgrading	The green light flashes cyclically		
Upgrade failed	The yellow light flashes cyclically		

Icon:

● / ● / ● / ●	Light of corresponding color is on
●●●●	Blue light keeps flashing twice
●●●●	Blue light flashes quickly
●●●●	Yellow light flashes quickly
●●●●	Red light flashes quickly
●●●●	Green light flashes quickly
●●●●	Green light breathing
○	Light is off

## 6. Specifications

Product name	Feiyu SCORP-Mini P 3-Axis Handheld Gimbal for Smartphone
Product model	FeiyuMP01
Max. Tilt Range	+143° ~-147° (±3°)
Max. Roll Range	+90.4° ~-199.7° (±3°)
Max. Pan Range	360°
Weight	About 683g (not including tripod)
Payload Capability	About 520g (Well-balanced)
Battery life	About 11 Hours (Well-balanced)
Charging time	About 1.5 Hours (18W quick charge)
Battery	2200mAh
Operating Voltage	6.8V-8.4V
Compatible smartphones	iPhone and Android phones (the width of the phone 55~ 88mm )

**FCC regulatory conformance:**

This device complies with Part 15 of the FCC Rules. Operation is subject to the following two conditions:

- (1) This device may not cause harmful interference.
- (2) This device must accept any interference received, including interference that may cause undesired operation.

**NOTE**

This equipment has been tested and found to comply with the limits for a Class B digital device, pursuant to part 15 of the FCC Rules. These limits are designed to provide reasonable protection against harmful interference in a residential installation.

This equipment generates uses and can radiate radio frequency energy and, if not installed and used in accordance with the instructions, may cause harmful interference to radio communications. However, there is no guarantee that interference will not occur in a particular installation. If this equipment does cause harmful interference to radio or television reception, which can be determined by turning the equipment off and on, the user is encouraged to try to correct the interference by one or more of the following measures:

- Reorient or relocate the receiving antenna.
- Increase the separation between the equipment and receiver.
- Connect the equipment into an outlet on a circuit different from that to which the receiver is connected.
- Consult the dealer or an experienced radio/TV technician for help.

**NOTE**

The manufacturer is not responsible for any radio or TV interference caused by unauthorized modifications to this equipment. Such modifications could void the user's authority to operate the equipment.

**RF Exposure**

This equipment complies with FCC radiation exposure limits set forth for an uncontrolled environment.