



SARS-CoV-2 Antigen Self Test Nasal

Quick Reference Guide for Patients

This guide is a reference for using the **SARS-CoV-2 Antigen Self Test Nasal**. It is essential that you read the Instructions for Use for patients before using this test.

For best performance, it is recommended this test be used within 7 days post-onset of symptoms.

IVD

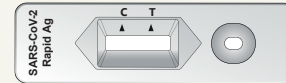
Important safety information

Warning!

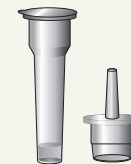
- Wash your hands with soap and water or use a hand sanitizer before and after performing the test.
- Keep the swab clean. Avoid touching the tip of the swab and ensure that it does not come into contact with any surfaces prior to use.
- Use the test kit only once. Avoid contact with skin and eyes. In case of accidental contact, rinse well in order to avoid skin irritations. In case of concerns, consult your doctor. In the event of a spillage, ensure that it is cleaned thoroughly using a suitable disinfectant.
- Do not use any of the test components in the body with the exception of the swab included in the kit. Do not swallow any of the components.
- Use the test immediately after opening the pouch (if not used immediately, the test must be used within 1 hour after opening).
- Dispose of the kit components in your household waste (not recycling) or according to your local guidelines. Remaining liquid in the tube should not be released into the drainage system or water bodies.

Components of the test kit

Pouch **1** containing a test device and a desiccant package (x5)



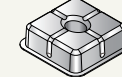
Pouch **2** containing 5 tubes with liquid and 5 nozzle caps (x1)



Sterile swab




Tube holder

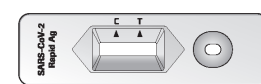
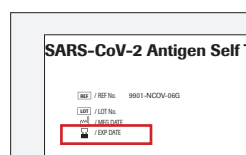


Materials required but not provided:

- Timer
- Tissue

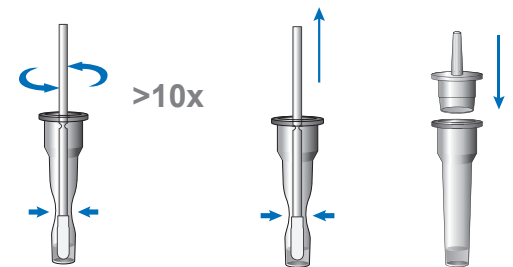
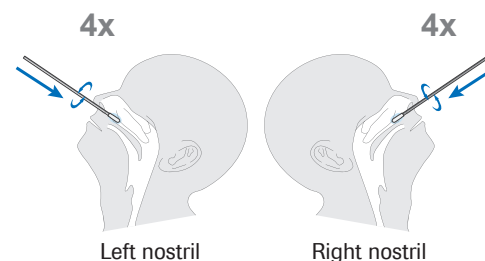
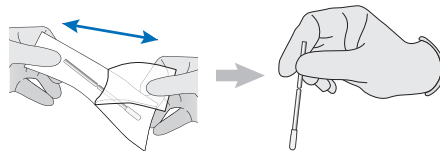
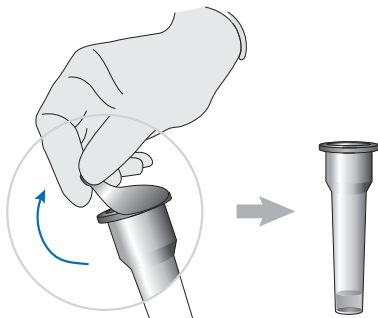
1 Preparing for a test

- Carefully read the Instructions for Use for patients for the **SARS-CoV-2 Antigen Self Test Nasal**.
- Wash your hands with soap and water or use a hand sanitizer before performing the test.
- Check the expiry date  on the back of the foil pouches. Do not use the test if the expiry date has passed.
- Open one of the foil pouches **1** by tearing along the tear-line and take out the test device and the desiccant package.
- Ensure that the test device is intact and that there are no green beads in the desiccant package. Do not open the desiccant package.



2 Collecting and preparing nasal sample

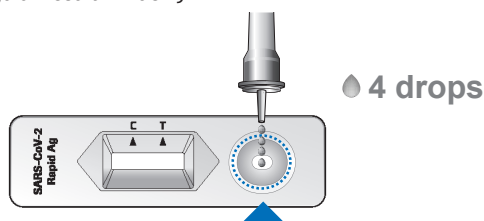
- Open the foil pouch **2** by tearing along the tear-line and take out one of the tubes with liquid and one nozzle cap and place them on the table.
- Open the seal of the tube carefully without spilling the liquid inside the tube. Place the tube in the tube holder.
- Blow your nose once using a tissue.
- Remove the swab from the packaging. Ensure that you only touch the handle of the swab and not the soft pad at the tip.
- Slightly tilt your head backwards.
- Insert the swab with the soft pad at the front into your left nostril. Slowly slide the swab approx. 2 cm forward (parallel to the roof of your mouth - not upwards) until you encounter resistance. Do not apply any pressure.
- Rotate the swab 4 times (for a total of approx. 15 seconds) against the lining of the nasal wall before removing it from the nostril.
- Repeat steps 6 and 7 in your right nostril using the same swab. **Note:** Samples must be collected from both nostrils using the same swab.
- Insert the swab into the tube until the soft pad is in the liquid. Squeeze the tube at the bottom and hold it tight. Stir the swab more than 10 times to transfer the biological material from the swab to the liquid.
- Remove the swab while squeezing the sides of the tube to extract the liquid from the swab. Dispose the swab and seal the tube securely with the nozzle cap.



WARNING! Failure to squeeze the tube can lead to incorrect results due to excess buffer in the swab.

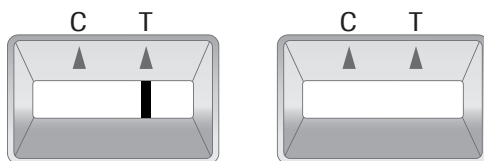
3 Performing a test

- Place the test device on a flat surface.
- Hold the tube upright above the circular well marked on the picture below (not over the rectangular result window).
- Drop exactly 4 drops onto the circular well. Gently squeeze the sides of the tube together if necessary. **Note:** You can continue with the test even if you accidentally drop 5 drops onto the test device.
- Set the timer and read the test result after 15 to 30 minutes.
- Wash your hands with soap and water or use a hand sanitizer after performing the test.



4 Interpreting results

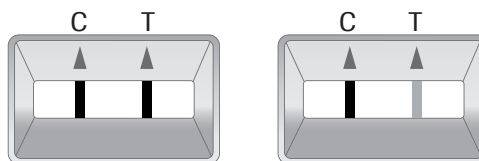
Invalid test result



- If a control line (C) is not visible, the result must be considered invalid. The test is not working correctly and you should perform another test using a different test kit.

You may have performed the test incorrectly. Carefully read the Instructions for Use and repeat the test. If your test result is still invalid, please contact your doctor or a COVID-19 test center.

Positive test result

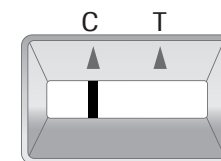


- If a test line (T) is visible together with a control line (C), this means that the result is positive.

Look carefully at the result: The test should be considered positive if two lines are visible - even if they are faint.

A positive test result means it is very likely that you have COVID-19. Please [click here](#) for your State and Territory COVID Support Services for guidance on confirmation testing where necessary. Anyone who tests positive is encouraged to contact their GP for support as required.

Negative test result



- If a control line (C) is visible (regardless of how faint it is) and a test line (T) is not visible, this means that the result is negative. It is unlikely that you have COVID-19.

However, even if your test is negative, continue to observe all hygiene and safety measures. If you suspect that you have an infection (i.e., if you have prolonged symptoms or if your symptoms are worsening), contact your doctor/primary care physician. You may have another infection, or your test result may be false. You may repeat the test after 1-2 days, as COVID-19 cannot be detected with complete accuracy during all stages of an infection.

SD Biosensor, Inc.
C-4th&5th, 16, Deogyong-daero 1556beon-gil,
Yeongtong-gu, Suwon-si, Gyeonggi-do, 16690,
REPUBLIC OF KOREA
Made in Korea

Distribution in Australia by:
Roche Diagnostics Australia Pty Limited,
2 Julius Avenue, North Ryde, NSW, 2113

Tech Support: 1800 497 069
Hours: 9am-7pm (AEST) / 9am-8pm (AEDT), 7 days per week
<https://go.roche.com/covid-selftest>

Document version: v1.2_AU
Revision date: January 2022
© 2022. All rights reserved.