

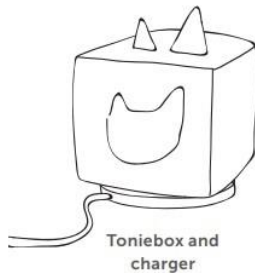


Welcome to tonies!

Beginner's Guide

Setup

There are two ways you can set up your Toniebox, either using my.tonies.com/setup or the free **mytonies app**, available in the App Store and Google Play. You will need:



For step-by-step instructions, check out our support article here: [How do I setup my Toniebox?](#)

Tonies

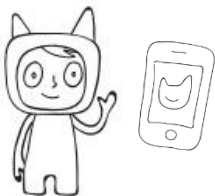
Our content Tonies come preloaded with stories, songs, or a mix of both! Check out our ever-growing list of available Tonies at our online shop, us.tonies.com.

When first placed on the Toniebox, the Tonie will begin downloading its content and the Toniebox LED will begin flashing **blue**. Once complete, the LED will turn solid **green**. This means that the Tonie no longer needs a Wi-Fi connection and can be used on the go!



Creative-Tonies

Creative-Tonies are blank and can hold up to 90 minutes of custom content. Invite friends and family to record messages, stories, and more onto your Creative-Tonies from anywhere in the world!



To record messages directly to your Creative-Tonie, use the **mytonies app** on your smartphone. To upload audio files, we recommend using my.tonies.com on your computer.

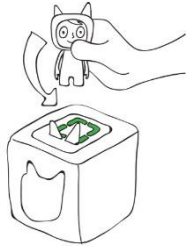
For additional instructions, take a look at our support articles here:

- Adding content: [How do I add content onto my Creative-Tonie?](#)
- Inviting other members: [How do I invite other members into my Household?](#)

Using the Toniebox

Turning On + Off

To turn **on**, pinch one of the Toniebox ears or place the Toniebox on its charging station. After 10 minutes of inactivity, the Toniebox will automatically turn **off**.

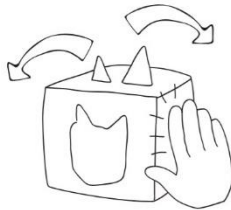
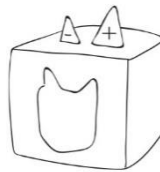


Playing and Pausing

When the LED on the Toniebox is solid **green**, place a Tonie on top. If you want to pause or stop the story, simply remove the Tonie from the Toniebox. If you want to resume the story, place the Tonie back on and it will resume from where it left off.

Adjusting the Volume

Pinch the larger ear to increase the volume and pinch the smaller ear to decrease it.

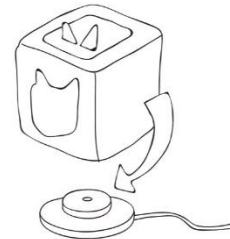


Skipping Back and Forth

To skip back and forth between tracks, tap the side of the Toniebox. To fast-forward or rewind, tilt the Toniebox on its side. It's important to note that the Tonie needs to complete its initial download before you can skip or rewind.

Charging

When fully charged, the Toniebox can be used for up to 7 hours. When the battery is almost empty, the Toniebox LED will turn solid **orange**. When the battery is empty, the LED will flash **red** and let you know that it needs to be charged.



Support + Troubleshooting

Don't have access to a 2.4 GHz Wi-Fi network? Try connecting to a hotspot instead. [How do I activate a mobile hotspot?](#)

Want to connect to a different Wi-Fi network? Follow these steps: [How do I connect my Toniebox to a different Wi-Fi network?](#)

Have any other questions? Please feel free to reach out directly to our Customer Happiness team at (877) 698-6643 or hello@tonies.com.



Contact us Monday to Friday 9am – 5pm PST

Phone: (877) 698-6643

Email: hello@tonies.com