



Smart Bird Camera & Solar Panel Combo Package

User Manual



Video Instructions



Powered by Camojojo

Support Email: support@camojojo.com

Hello & Welcome

Thank you for choosing Hibird DIY.

The Hibird bird-watching camera offers 4K video recording and 1080P live streaming in a compact design, equipped with a solar panel. Its lightweight build allows it to be mounted anywhere and adjusted in any direction using the included hose clamp and flexible bracket.

Powered by AI technology, the camera can accurately identify over 10,000 bird species.

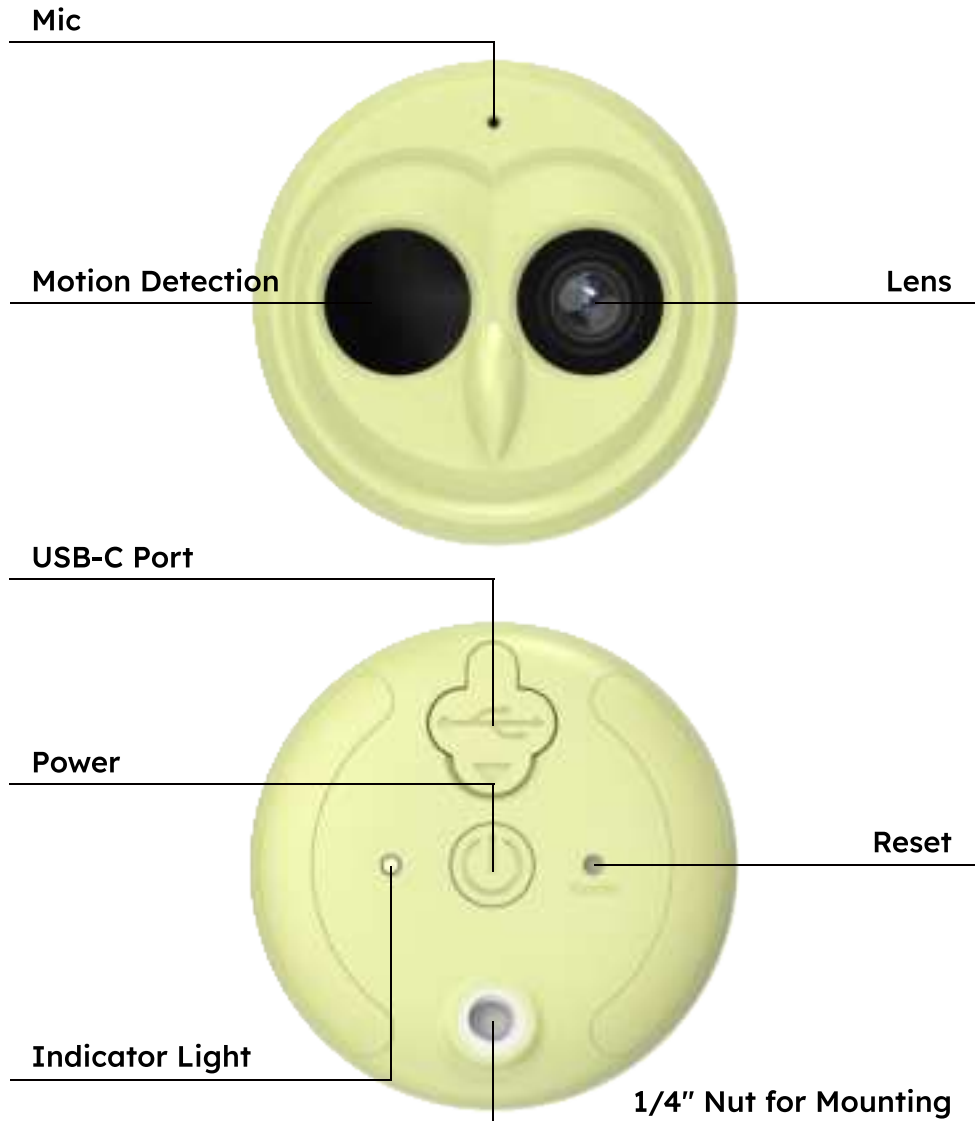
Additionally, it features an intelligent bird conversational encyclopedia, enhancing your bird-watching experience with detailed insights. With exceptional image quality and innovative features, Hibird ensures a delightful and rewarding experience every time.

Content

1. Quick Start	03
2. Discover Features	13
3. Product Scenarios	16
4. Specification Form	18
5. Troubleshooting & FAQs	20
6. Warranty	22

1.Quick Start

Inside the Package (Camera)



Camera X1

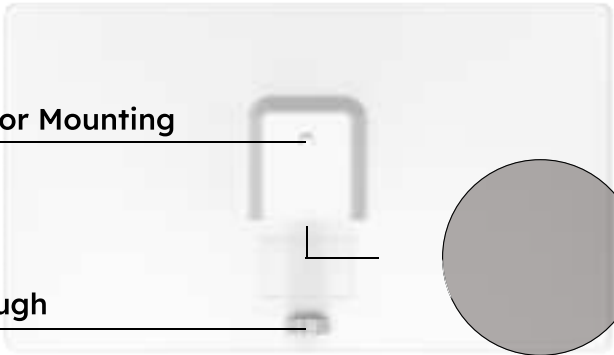
Inside the Package (Solar Panel)

Solar Panel



1/4" Nut for Mounting

Cable Trough



DC Port (4.4x1.6mm)

Solar Panel X1

Inside the Package (Accessories)



**Metal Flexible
Bracket X 2**



**Hose
Clamp X 4**



**Thumb
Screw X 2**



Washer X 2



Screw X 6



Anchor X 6



**Bracket
Base X 2**



**Locator
Sticker X 2**



**USB-C
Cable X 1**



**Solar Panel
Cable X1**



The above accessories are used for the camera and the solar panel installation and charging







Get the Camera and Solar Panel Ready

1 Take Out the Camera

Take the camera out of the box, and long press the Power to turn on the camera. The status indicator light (green) will illuminate, indicating that the camera has started up normally (If it is the first time to use, the indicator light will flash in green, indicating that you need to configure Wi-Fi network first).



Indicator Light Status

 Green light on	The camera is powered on and operating (To save power, the light will turn off after 30 seconds, but the camera remains operational and is not shut down).
 Green light flashing	The camera is in App configuration mode (it can be discovered by the App during this time).
 Yellow light on	The camera is charging.
 Yellow light flashing	The camera is connected to a transfer device and has entered USB drive mode, allowing data to be read from the camera.
 Red light on	Camera error.
 Red-yellow-green flashing alternately	Firmware is updating. The camera will restart once the update is complete.

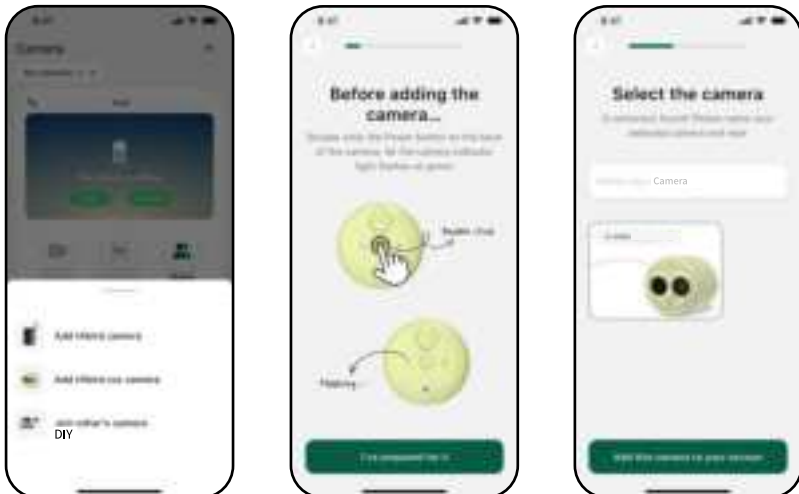
2 Using with App

Download Hibird App



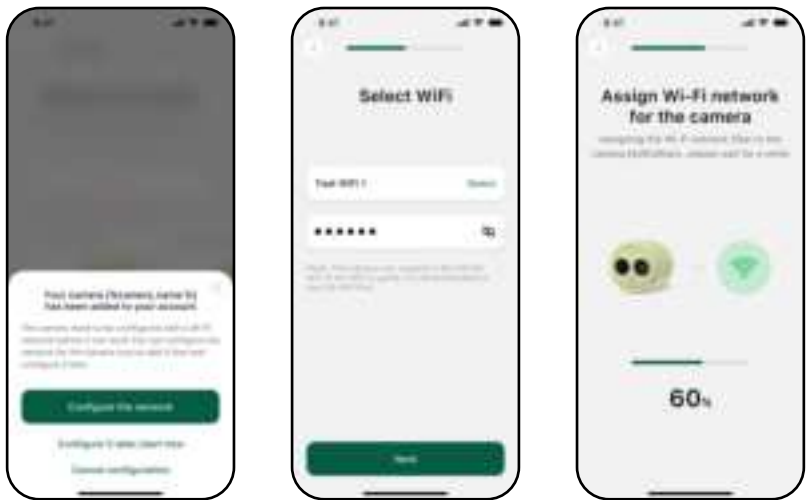
Add the Camera to Your Account

Click Add Hibird DIY on the App and follow the steps on the App page to add the camera.



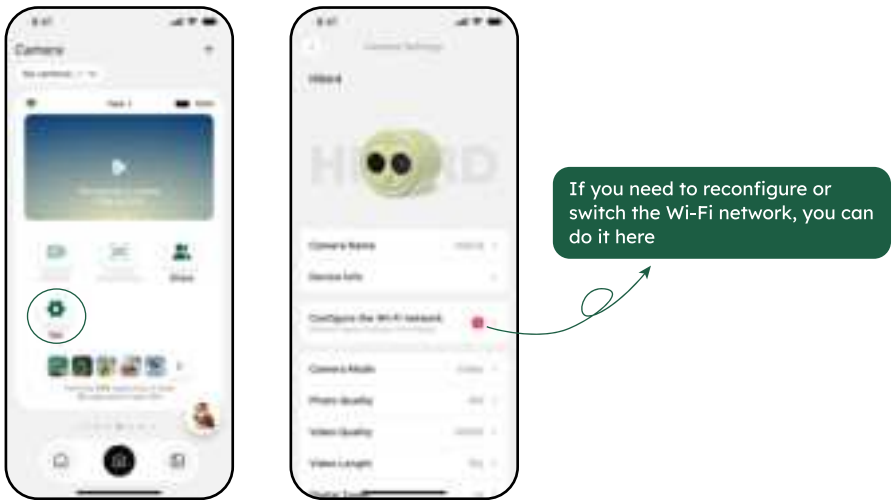
Configure Wi-Fi Network

You can also skip the Wi-Fi network configuration in this step and configure the Wi-Fi network in "Camera -> Set -> Configure the Wi-Fi network" later.



Set up the Camera

Through the App, you can view the operating status of the camera, including basic information such as current battery power, signal strength, storage space, etc. You can modify the operating specifications of the camera in the settings.



Collect Images & Live Streaming

When the camera is functioning properly and the network connection is stable, you can view live video captured by the camera directly through the App and stream it seamlessly in real-time.



Other Features of the App

Sharing with Others: The camera owner can share the camera feed and cloud album with family, friends, or others through the App, making it easy to share bird sightings.

AI-Powered Features: The App supports AI-powered bird identification, recognizing up to 10,000+ species. It can also filter out non-bird images for a cleaner experience.

More features coming soon...



Sharing
with Others



10000+
Species Bird
Identification



Smart Tagging &
Filters

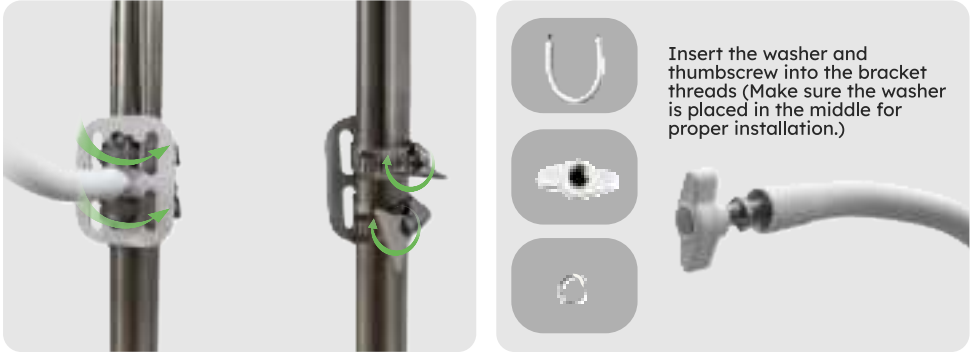


More...

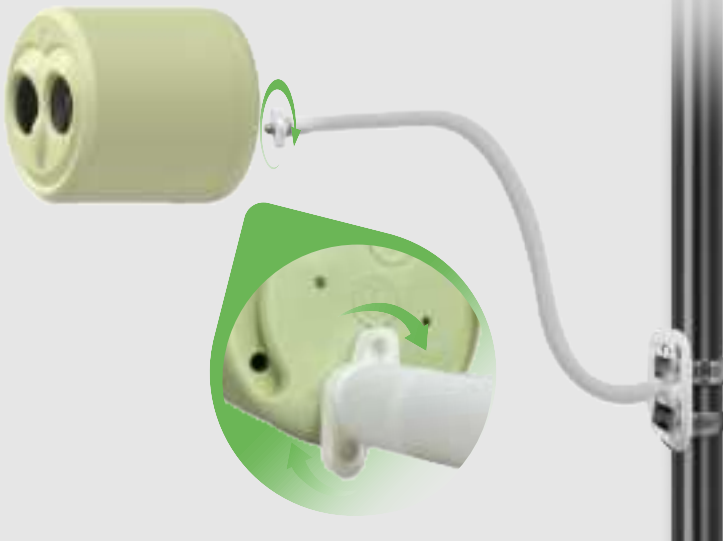
3 Installation

Camera

You can mount the camera anywhere using the Metal Flexible Bracket. Adjust its angle and tighten it with the thumbscrew to secure it in place. Use the Bracket Base and Hose Clamp to attach the bracket to a pole and point the camera at the bird feeding tray. This is just one way to install it—you can set it up however you prefer.



Adjust the camera to the desired direction, then tighten the thumb-screws in the opposite direction to lock it in place and prevent movement.



Solar Panel

The installation steps for the solar panel are the same as the previous steps. Aim the solar panel towards the sunlight and connect it to the camera using the charging cable to ensure long-term battery life.

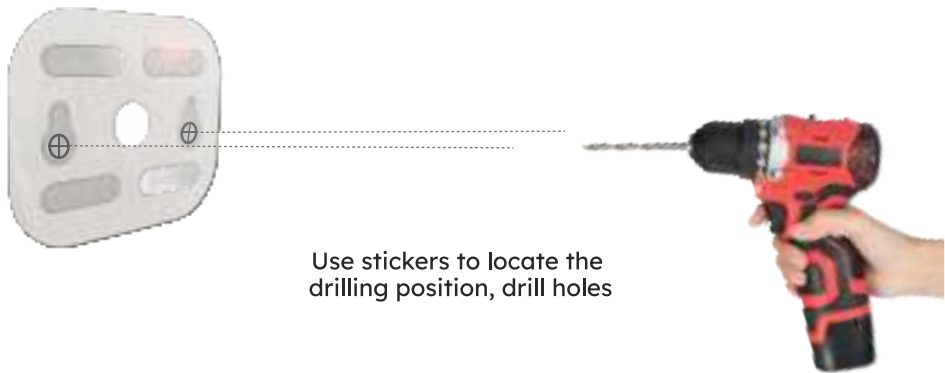


The bracket is adjustable. Fix the solar panel securely and point it in the direction of the sun.

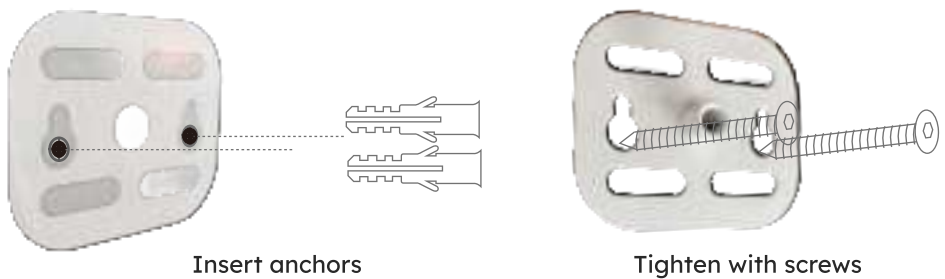
Connect the camera to the solar panel using the included cable, then position the camera 4-12 inches from the bird feeder. Adjust the solar panel to face the sun for optimal charging. Once everything is set up, ensure the camera is placed in an area with a stable Wi-Fi signal. Now, relax and enjoy watching the birds visit your feeder!



You can also mount the camera and solar panel by drilling holes into a wall or tree and securing the bracket base with screws. (The location sticker for accurate positioning is included in the accessory package.)



Use stickers to locate the drilling position, drill holes



Insert anchors

Tighten with screws



Install the bracket

2. Discover Features

Quick Trigger to Capture Bird Moments

The sensitive and fast camera trigger (trigger speed is less than 0.5s) will not miss any bird that comes to visit. You can clearly know which little cuties are moving around your house.



Ultra-Clear 4K Video

It supports up to 4K video recording, clearly showing the details and colors of each bird, presenting you with excellent and high-quality videos.



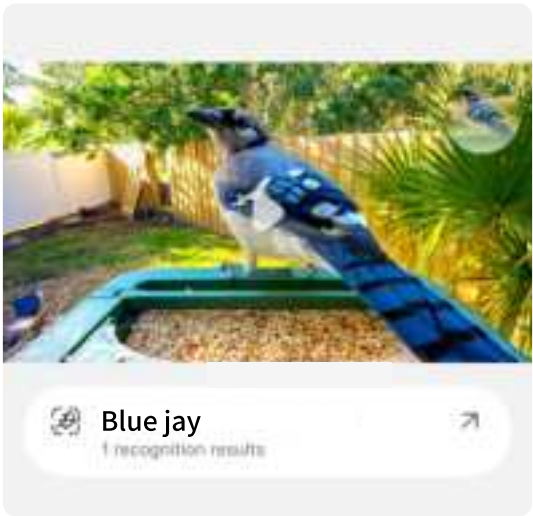
High-Definition 1080P Live-Streaming

Support 1080P live-streaming, presenting you with high-definition real-time streaming video.



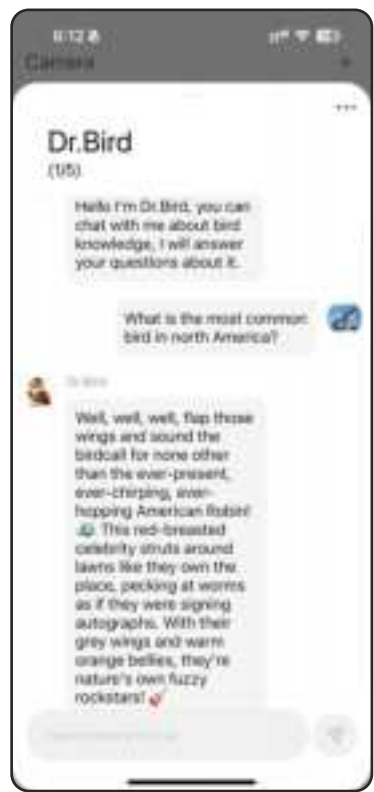
Accurate AI Bird Identification

Supports AI bird Identification, which can identify more than 10,000 species of birds with high accuracy, allowing you to not only photograph the bird, but also know its name.



Intelligent Chat-Style Bird Encyclopedia

Dr.Bird, an Intelligent Chat-Style bird encyclopedia, supports asking questions about birds through conversations, helping you better understand birds.



All-in-One Easy-to-Use App

The feature-rich and easy-to-use App allows you to check camera status, set up the camera, watch live-streaming, view images, play with AI functions, and more, giving you a new and exciting experience.

3. Product Scenarios

A Fun-Filled Birdwatching Journey with Unexpected Visitors to Your Yard or Balcony

Do you often hear birds around your yard or home but never get the chance to see them up close? This camera allows you to observe their true beauty, identify which visitors stop by, and capture high-quality photos and videos. You might even witness unexpected guests, like large birds or small mammals you've never seen before, appearing right in front of your camera. It's an exciting way to bring unique and joyful moments to your day.



A Great Way to Get Kids to Love Nature

This camera is a wonderful tool for sparking children's interest in nature. They can observe various species of birds and other small animals in their daily activities, cultivating a deeper appreciation for wildlife. It not only expands their knowledge but also encourages curiosity and a love for the natural world.



An Ideal Gift for the Holidays

Looking for the perfect gift for birthdays or holidays? This camera is a great choice for family and friends. It's more than just a fun and innovative device - it features a camera-sharing function that allows you to connect with others, share captured bird moments, and enjoy the experience together. It's a thoughtful way to strengthen relationships and create shared memories with loved ones.



4. Specification Form

Camera

Item	Specification
Dimension	2.32" x 2.32" x 2.47"
Net weight	4.938 oz
Bird detection range	0.98 ~ 6.56 ft, 80°
Image quality	Photo: up to 32MP Video: up to 4K
Live streaming	Supported in App
Battery	3,000 mAh
Input	5V ~ 12V, 1 ~ 2A
Memory	Built-in 32GB
Connection	2.4G/5G Wi-Fi
Working temperature	-4 °F ~ 131 °F
Working humidity	5% ~ 90%
Waterproof	IP66

Time zone	Based on Your Location
Material	Plastic (ABS, PC), metal

Solar Panel

Output	DC (4.4x1.6mm) 5V/ 1A
Max Output Power	5W (±5%)
Dimensions	9.29" x 5.35" x 0.98"
Weight	8.71 oz
Waterproof	IP66

WARNING:

- Risk of fire or explosion if the battery is replaced with an incorrect type.
- Do not dispose of the battery in fire, hot ovens, or attempt to crush or cut the battery, as this can cause an explosion.
- Avoid exposing the battery to extremely high temperatures, which may result in an explosion or leakage of flammable liquid or gas.
- Do not subject the battery to extremely low air pressure, as this may cause an explosion or leakage of flammable liquid or gas.

5. Troubleshooting & FAQs

Pairing and adding camera problems

Before using the camera, please use the App to add the camera to your account. Please follow the instructions on the App.

If the App notifies that the device has been bound, please contact the after-sales team for assistance.

Wi-Fi network connecting problems

To work properly, the camera must be connected to a Wi-Fi network and be within its coverage area. Otherwise, the App will not receive photos or videos.

It is recommended to configure the Wi-Fi network during the camera setup process. If skipped, you can configure the Wi-Fi in Camera -> Set -> Configure the Wi-Fi network.

If the network setup fails, double-click the Power button to put the camera into "Network Configuration Mode" and try again.

How to change the Wi-Fi network for the camera

If you want to switch the current camera's Wi-Fi network, double-click the Power button on the back of the camera to enter "Network Configuration Mode", then select the new Wi-Fi you want to use for the camera in App-> Settings-> Network and configure it.

The indicator light goes out after powering on

After powering on, the camera indicator light (green light) will turn on and go out after 5 minutes. This is a power-saving feature and does not mean the camera has stopped working. Rest assured, the camera is functioning normally.

How to upgrade the camera firmware

To upgrade the camera firmware:

- 1). Go to App -> Settings -> Device Information -> Firmware.
- 2). Click "Check Upgrade" to see if a new firmware version is available.
- 3). If available, update the firmware through the App. Ensure the camera has sufficient battery and available storage space before upgrading.

How to set up the camera

Once the camera is turned on, go to App -> Settings. Here, you can configure operating settings, image quality, and view device details.

The camera is triggered too frequently

If the camera triggers too often or experiences false triggers, try the following steps:

- 1). Avoid pointing the camera directly at the sun, as the heat can activate the PIR sensor.
- 2). Do not place the camera near flowers, plants, or trees that sway in the wind, as movement can trigger the camera.
- 3). Ensure the camera is placed on a stable surface. A shaking camera may cause false triggers.
- 4). Lower the Detect Sensitivity in the App settings to reduce the sensor's sensitivity and minimize false triggers.

The camera does not trigger shooting

If the camera doesn't send images to the App, follow these steps:

- 1). Check if the camera is working by reviewing the last synchronization time in the App or testing live streaming.
- 2). Verify the Wi-Fi network status. Poor Wi-Fi signals may prevent images from being sent to the App.
- 3). Adjust the Detect Sensitivity in the App settings. (Setting it to 0 disables the trigger function.)
- 4). Connect the camera to a computer using a USB-C cable to check for local images. If images are present locally but not sent, the camera is functioning, but connectivity needs to be resolved.

Can I replace the camera's SD card?

The camera's SD card cannot be replaced. It features a built-in 32GB memory card. To access the stored data, connect the camera to a computer using a USB-C cable.

AI recognition is inaccurate

AI recognition may fail if the bird's posture in the image is poor, such as when the bird is facing away from the camera or partially obscured. This can lead to recognition errors.

How long can the battery last? Can I use solar panels?

Battery life depends on the number of triggers the camera records. To extend battery life, you can connect the camera to an external solar panel.

6. Warranty

Based on a strict QC system, we initially offer all our customers one year long time limited warranty, come along with selectable chargeable renewal policy of warranty as one, two, three, or four years.

Our products are warranted against defects in materials and workmanship for a period of one year from the date of original purchase. If a defect exists, we will, at our option and to extent permitted by law will (1) repair the product at no charge using new or refurbished parts. (2) exchange the product with a functionally equivalent product that is new or refurbished.

Provided the product is returned freight charge paid. This warranty excludes damage resulting from abuse, accident, modifications or other causes that are not defects in materials and workmanship, or by someone other than our authorized technicians. This warranty only covers failures due to defects in materials or workmanship under normal usage.

To obtain warranty service, please contact us to determine the nature of the problem before returning the product under this warranty (with a written description of the problem and print samples) for repairing or exchanging.

Download Hibird App



Powered by Camojojo

Support Email: support@camojojo.com