



MAKE A DIFFERENCE

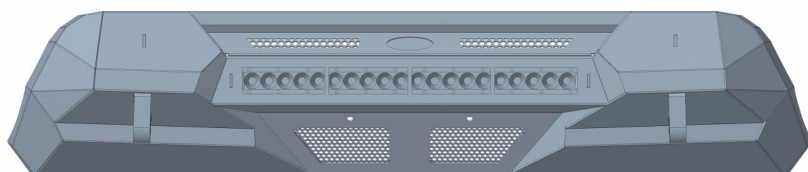
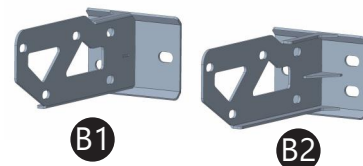
Front Bumper

BXG.4231

(INSTALLATION INSTRUCTION)

ATTENTION • Please verify all parts are present and read instructions carefully before starting installation.
Please feel free to contact your distributor if you have any kind of question about your purchase.

1 CONTENTS

**A****B1****B2****C2****C1****C3**

A: Main Body

B1&B2: Mounting Brackets

C1&C2&C3: License Plate Bracket

Qty	Part Name	Size(mm)	Picture	Qty	Part Name	Size(mm)	Picture
10	Hex Bolt	M12*30		2	Flat Washer	M10*25*1.5	
2	Hex Bolt	M10*25		6	Flat Washer	M6*12*1	
6	Button Bolt	M6*16		2	Nylon Round Spacer	M6*12*1.3	
10	Split Lock Washer	D12		10	Hex Nut	M12	
2	Split Lock Washer	D10		6	Nylon Lock Nut	M6	
10	Flat Washer	M12*30*1.5		1	Edge Trim	165	

2 TOOLS REQUIRED

◆ Drive Ratchet Handle

◆ 10mm, 14mm Wrench

◆ 4mm Hex Bit Socket

◆ 17mm, 19mm Wrench

To view online instruction, please
scan the QR code.

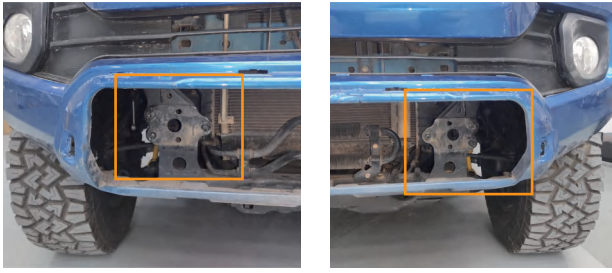




INSTALLATION INSTRUCTION

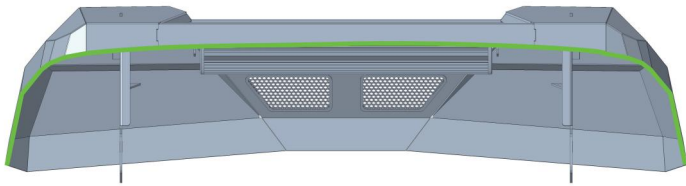
Step 1

Place the vehicle in park and remove the factory bumper and accessories from the frame. Keep the factory nuts.



Step 2

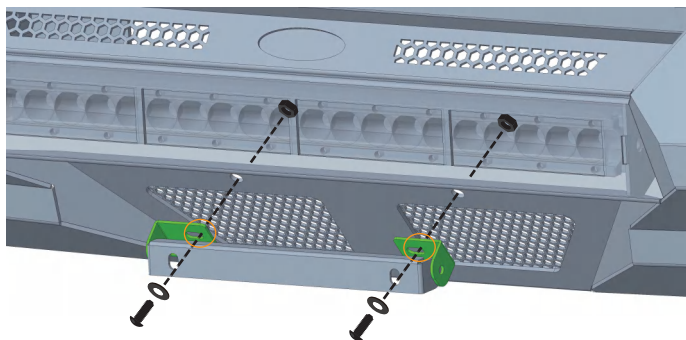
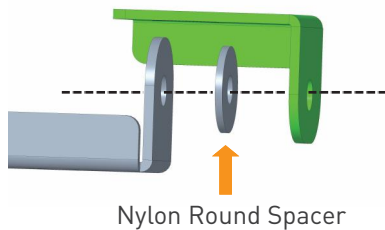
Push Edge Trim over the bumper edge. Cut Trim to fit.



Step 3

Assemble the license plate bracket, secure it to the bumper, and tighten the hardware.

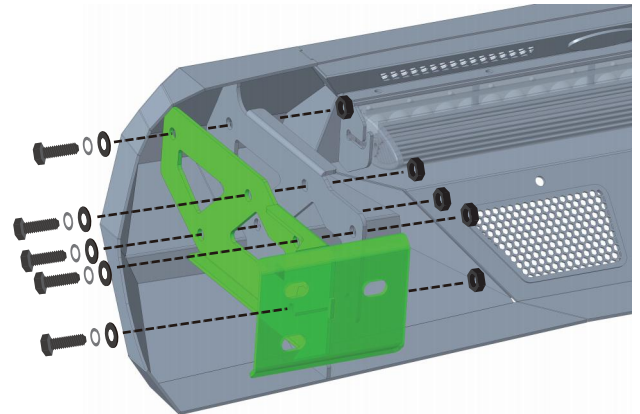
- (4) M6×16 Button Bolts
- (4) M6 Nylon Lock Nuts
- (4) M6×12×1 Flat Washers
- (2) M6×12×1.3 Nylon Round Spacer



Step 4

Install the mounting bracket onto the bumper. Repeat this step for the other side. Tighten the hardware.

- (10) M12×30 Hex Bolts
- (10) M12×30×1.5 Flat Washers
- (10) D12 Split Lock Washers
- (10) M12 Hex Nuts

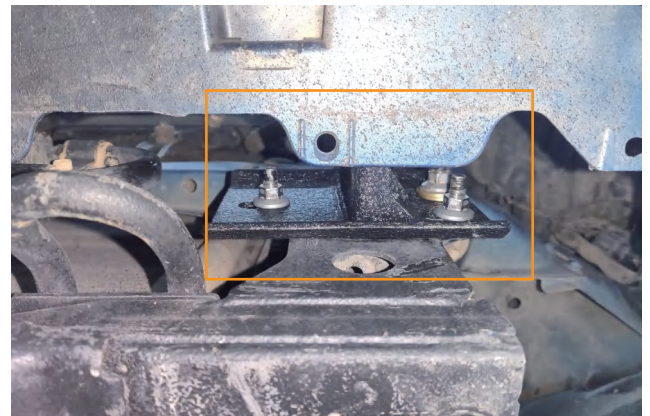


Step 5

Install the bumper onto the vehicle. Repeat this step for the other side.

Adjust the bumper to the desired position, then fully tighten all hardware.

- (6) Factory Nuts



Step 6

The installation is complete. We hope you enjoy a wonderful off-road life with this quality Hooke Road product!

