

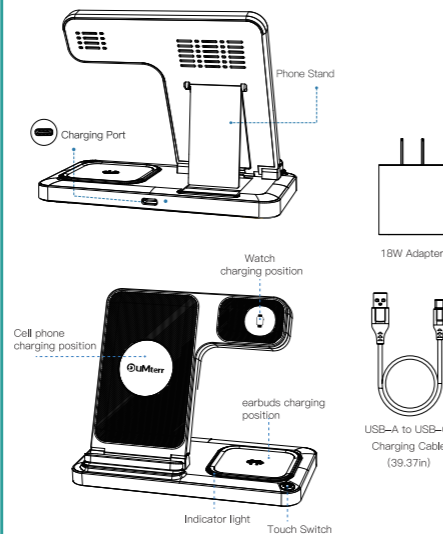
正面

Foldable 3 in 1 Wireless Charger (Model: W342)



User Manual
(Please read the user manual carefully before using the product)

Product Introduction



Compatible Devices

1.Smartphone
For Apple:
iPhone 16, iPhone 16 Plus, iPhone 16 Pro, iPhone 16 Pro Max;
iPhone 15, iPhone 15 Plus; iPhone 15 Pro, iPhone 15 Pro Max;
iPhone 14, iPhone 14 Plus, iPhone 14 Pro, iPhone 14 Pro Max;
iPhone 13, iPhone 13 mini, iPhone 13 Pro, iPhone 13 Pro Max;
iPhone 12, iPhone 12 mini, iPhone 12 Pro, iPhone 12 Pro Max;
iPhone 11, iPhone 11 Pro, iPhone 11 Pro Max; iPhone SE
(2nd generation); iPhone XS, iPhone XS Max; iPhone XR; iPhone X;
iPhone 8, iPhone 8 Plus
For Samsung:
Galaxy Z Flip 6, Z Fold 6, Z Flip 5, Z Fold 5, Z Flip 4, Z Fold 4, Z Flip 3,
Z Fold 3; S24, S24+, S24 Ultra, S23, S23+, S23 Ultra, S22, S22+,
S22 Ultra, S21, S21+, S21 Ultra, S20, S20+, S20 Ultra, S10, S10+, S10e,
S9, S9+, S8, S8+, S7, S7 Edge, S6, S6 Edge, S6 Edge+; Note 20,
Note 20 Ultra, Note 10, Note 10+, Note 9, Note 8, Note 7, Note 5;
For Google:
Pixel 8, Pixel 8 Pro, Pixel 7, Pixel 7 Pro, Pixel 6, Pixel 6 Pro, Pixel 5,
Pixel 5a, Pixel 4, Pixel 4 XL, Pixel 3, Pixel 3 XL
2.Earbuds
AirPods 4, 3, 2, Pro, Pro 2
(Note: AirPods 4/3/2,1 charging case model: A3058/A2897/A1602
do NOT support wireless charging. If charging is not working, please
check the model of your charging case.)

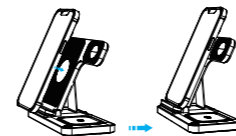
3.Smartwatch
Apple Watch Series 10, 9, 8, 7, 6, 5, 4, 3, 2,
Apple Watch SE, Ultra, Ultra 2

Product Specifications

Model : W342 Brand : DUMTERR
Output for iWatch : 2.5W Input : 5V \Rightarrow 3A 9V \Rightarrow 2A
Output for earbuds : 3W
Output for phone : 15W/10W/7.5W/5W

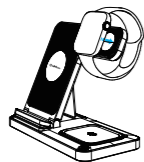
How to Use the Product

1.Place your phone in the designated wireless charging area. The blue indicator light will blink slowly, indicating that charging has started. Once fully charged, the blue light will remain on. If charging is not functioning properly, the blue and green lights will flash alternately. (Standby Mode: The green light stays on when a 9V input is detected, and flashes when a 5V input is detected, applicable only for the mobile phone module.)

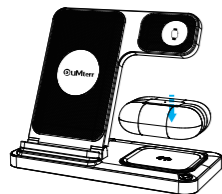


反面

2.Place your watch in the wireless charging area and align it with the magnetic charging pad. The charging indicator on the watch display will light up to show that charging is in progress.



3.Place the Bluetooth earbuds flat on the wireless charging area.
(Note: Please remove any 3mm silicone protective cover from the earbuds before charging, as this may interfere with the charging process.)



Precautions

- 1.Avoid placing any metal objects on the back of your phone while charging, as they may interfere with the charging process.
- 2.The optimal charging distance is 2–6mm. Do not use protective cases thicker than 3mm, as they may affect charging efficiency.
- 3.Charging speed may be faster in cooler temperatures (e.g., winter) compared to warmer temperatures (e.g., summer).
- 4.Do not place the product in high–temperature environments or expose it to direct sunlight.
- 5.The product is not waterproof. Do not immerse it in water or expose it to fire.
- 6.If the functional temperature exceeds 104°F, charging will be interrupted to prevent damage to your phone, watch, or earbuds' batteries.

FCC Warning

This device complies with part 15 of the FCC Rules. Operation is subject to the following two conditions:(1) this device may not cause harmful interference, and (2) this device must acceptany interference received, including interference that may cause undesired operation.

Any changes or modifications not expressly approved by the party responsible for compliance could void the user's

authority to operate the equipment.
NOTE: This device has been tested and found to comply with the limits for a Class B digital device,pursuant to Part 15 of the FCC Rules.These limits are designed to provide reasonable protection against harmful interference in a residential installation.This equipment generates,uses and can radiate radio frequency energy and,if not installed and used in accordance with the instructions,may cause harmful interference to radio communications. However,there is no guarantee that interference will not occur in a particular installation.If this device does cause harmful interference to radio or television reception, which can be determined by turning the device off and on, the user is encouraged to try to correct the interference by one or more of the following measures:
–Reorient or relocate the receiving antenna.
–Increase the separation between the device and receiver.
–Connect the device into an outlet on a circuit different from that to which the receiver is device.
–Consult the dealer or an experienced radio/TV technician for help.

The FCC certification of this device refers to RF exposure testing performed in typical operating conditions, where a person is no closer than 20 centimeters from the device surface at all times, except for non-repetitive patterns with transient time intervals in the order of a second. Only in the stated conditions, the device is shown to fully comply with the FCC RF Exposure requirements of KDB 447498.

After–sales Services

If you experience any issues with the product, please contact us by email at dumterr@163.com.

To ensure a quicker resolution, kindly provide the following details: your order number, the issue you are encountering, your phone model, the type of adapter and phone case you are using, and if possible, include a picture or video of the problem.
Thank you for your understanding and cooperation.

Activate Lifetime Warranty by sending your Order Number to dumterr@163.com within 15 days from the date of receipt.



<https://dumterr.com/>



dumterr@163.com

Made in China