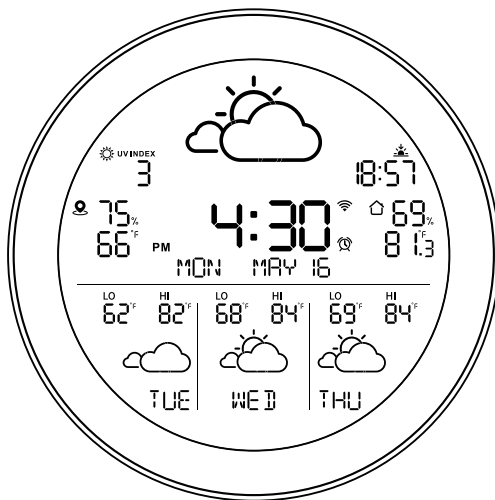
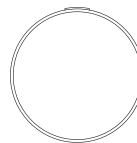


Dekala WeatherStation Pro™

(SWS-S002)



Indoor weather station



Wireless sensor

User Manual

Please read this manual carefully before using the product and keep it in proper storage.
(V1.2)



Download App



Instruction Videos

Support@dekalastore.com

Please feel free to contact us if you need any assistance.

Content

| | |
|-------------------------------------|----|
| Warning | 03 |
| Feature Description | 03 |
| Packing List | 04 |
| Base Unit Specification | 05 |
| Sensor Specification | 05 |
| Quick Guidance | 06 |
| Installation and placement | 09 |
| 1. Installation and placement | 09 |
| 2. Sensor placement | 10 |
| 3. Sensor battery charging | 10 |
| 4. How to Pair Base Unit and Sensor | 11 |
| APP Connection | 14 |
| 1. Download the App | 14 |
| 2. Wi-Fi connecting mode | 14 |
| App Guidance | 15 |
| 1. Connect device to app | 15 |
| 2. WeatherStation Pro Home Page | 17 |
| 3. Alarm Clock | 18 |
| 4. Share Device | 20 |
| FAQS | 21 |

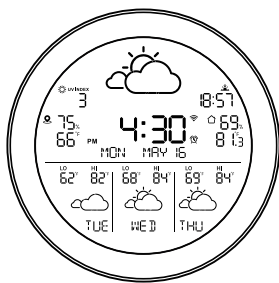
Warning

- Please keep the sensor in a safe place to prevent children from swallowing it.
- When using this product, ensure that the environmental temperature is within the range of -4°F (-20°C) to 140°F (60°C), and the humidity is between 0% and 99%.
- This product is not fireproof, so please do not expose it to fire or any other heat source.
- This product is not waterproof, so do not immerse it in water as it may damage the equipment.

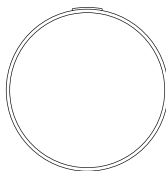
Feature Description

- This is a smart weather clock that downloads online weather data for the local area where the product is located and displays weather information, including time, date, temperature, and humidity.
- The Base Unit provides access to multiple sensors (up to three sensors). You can place the sensors indoors or outdoors, and the collected data will be transmitted and displayed on the Base Unit.
- You can configure and control the product through an app, and you can check weather data on both the indoor Base Unit and the app. However, you can only access indoor/outdoor historical temperature records on the app.

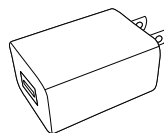
Packing List



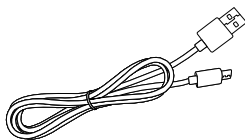
Base Unit *1



Sensor *1



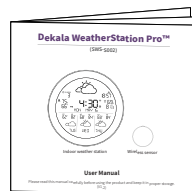
Adapter *1



Charging Cable *1



lanyard *1



User Manual *1

Base Unit Specification

| | | | |
|-----------------------|------------------------------------|------------------|-----------------|
| Model | SWS-S002 | Material | ABS+PC |
| Size | 160×23×160mm | Output | USB-A 5V-1A |
| Color | Black | Input | Micro USB 5V-2A |
| Weight | 335g | Temperature unit | °C/°F |
| Operating Temperature | -4°F-140°F(-20°C~60°C) | Humidity unit | RH% |
| Communication | WiFi (2.4G) + Bluetooth | | |
| Accuracy | Temp: ±0.5 °C Humidity : ±2 %RH | | |

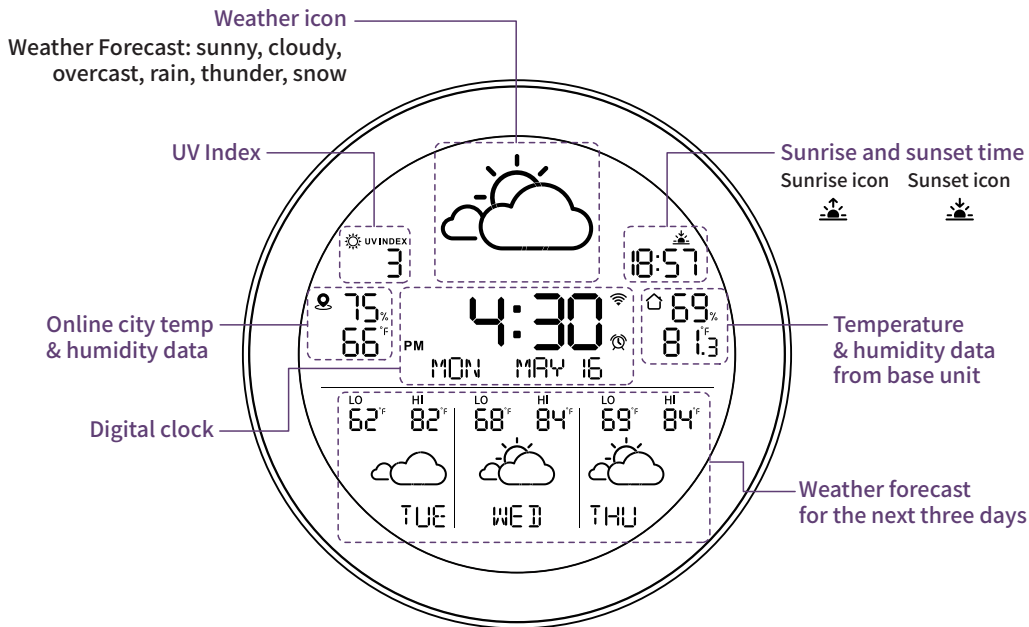
Sensor Specification

| | |
|---------------------------|---------------------------------------|
| Power supply | 3.7V 400mA lithium battery |
| Power input | Micro USB |
| Standby power consumption | 11uA |
| Standby duration | Up to 6 months |
| Communication frequency | 433.92MHz |
| Communication distance | Up to 80M in outdoor open environment |

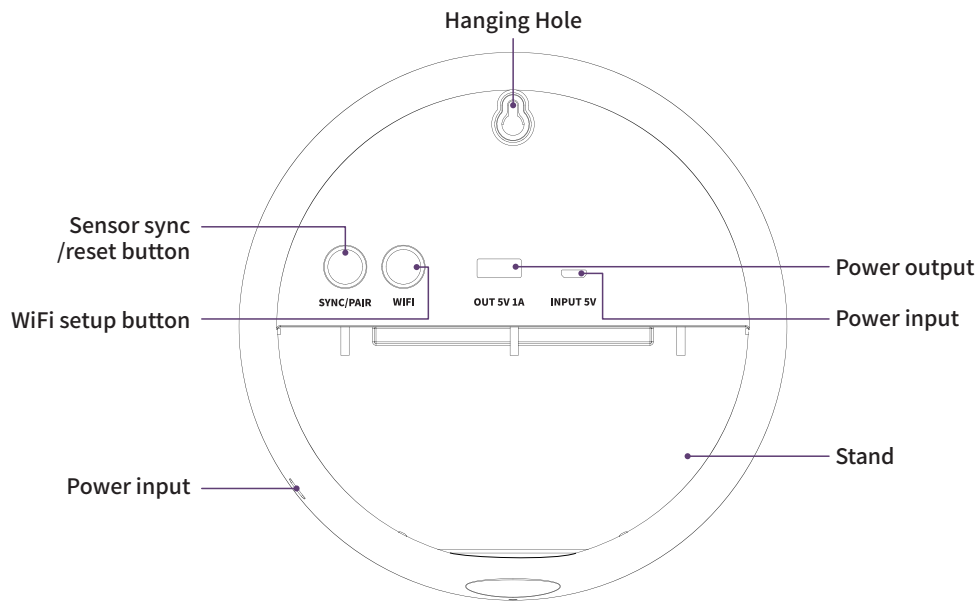
| | |
|---------------|--|
| Certification |      |
|---------------|--|

Quick Guidance

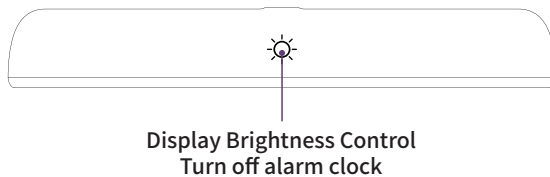
Front View



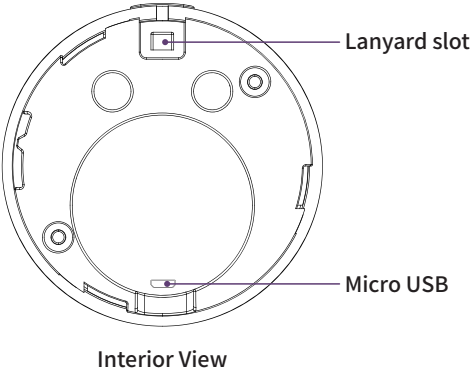
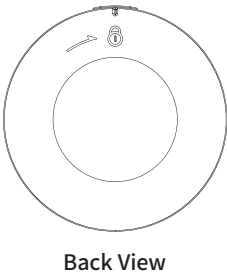
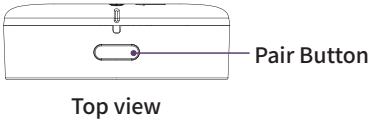
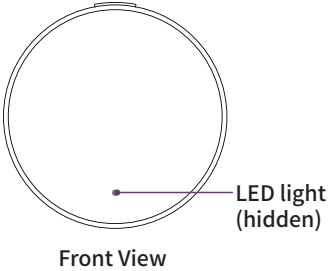
Back View



Top View



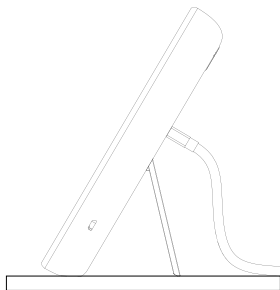
About the Sensor



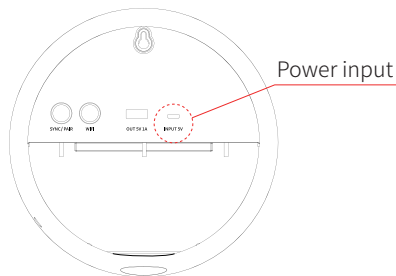
Installation and placement

1. Installation and placement

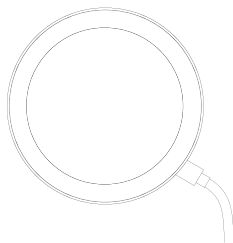
Two way of Base Unit installation.



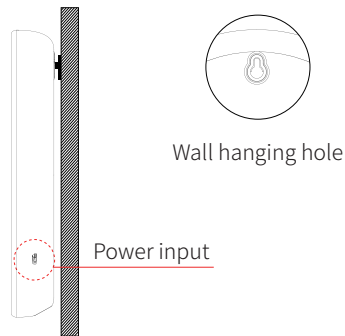
Stand on table



Back view

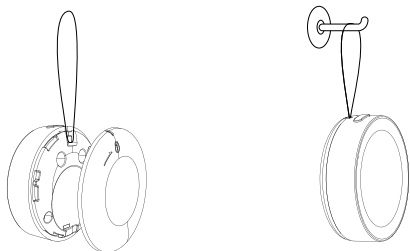


Mount on wall



Side view

2. Sensor placement

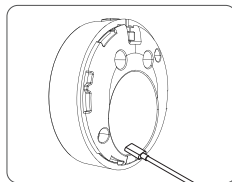
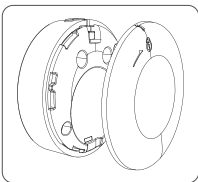


Please insert the lanyard through the hole.

3. Sensor battery charging



① To Unlock, press down with the palm of your hand and rotate counterclockwise.



② Insert micro USB power input charging cable



③ To lock, press down with the palm of your hand and rotate clockwise.

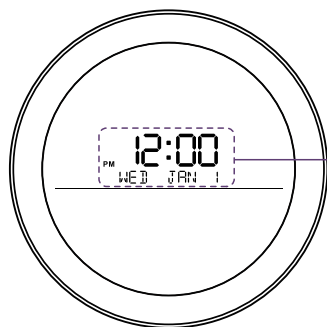
Note: The red indicator signifies that the device is **"Charging"**. Once fully charged, the red indicator will disappear.

4. How to Pair Base Unit and Sensor

(1) "The Base Unit should be placed indoors, while the Sensors can be placed both indoors and outdoors within the maximum communication distance."

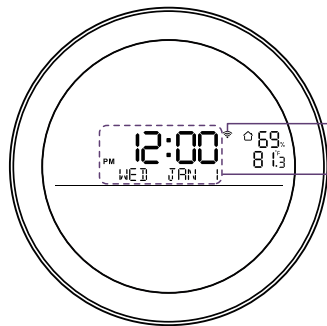
Note: The distance between the Base Unit and the Sensors should be 50-80m/164-262ft (without obstacles).

(2) "After plugging in the power, connect to the 2.4G WiFi (refer to page 12)."



Default
Time-Display

➤ Default display

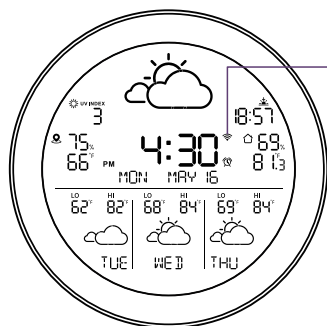


WiFi icon flashes

Default
Time-Display

➤ Network connected;
Online weather data available;
The local temperature & humidity of the Base
Unit updates normally.

(3) To enter synchronous mode, long-press the **"SYNC/PAIR"** button, and the sensor channel icon will flash. First, press the button on the sensor to activate it, and the light spot on the front side will start flashing. Then, press and hold the button on the sensor to synchronize it with the base unit. The base unit will beep once after successful synchronization and automatically exit SYNC mode.



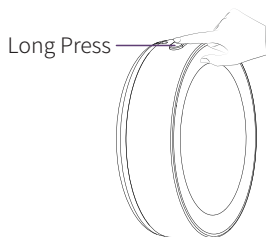
1

Connection Succeed
WiFi icon stays solid



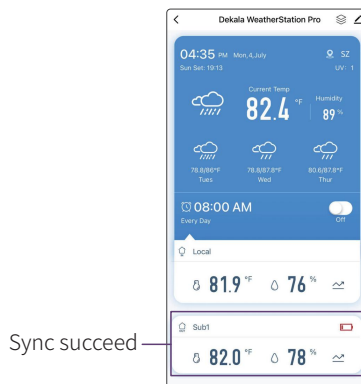
2

Long Press
SYNC/PAIR button



3

Long Press



Sync succeed

4

(4) To add an additional sensor, short press the **"SYNC/PAIR"** button again to activate sync mode. Press the button on the sensor to activate it, causing the light on the front side to flash. Then press and hold the button on the sensor to sync the second sensor, and you will hear one beep to indicate success. Repeat these steps to sync a third sensor.

(5) After syncing, press the button on the paired sensor. The base unit will beep three times to confirm the connection. If not, it means the sync failed or the sensors are out of range.

(6) To reset, long press the **"SYNC/PAIR"** button to clear all sensor channels and data, and you will hear three beeps from the buzzer.

APP Connection

1. Download the App



Download "**Dekala**" from App Store/Google Play or scan QR code, sign up and log in.



Attention: Wi-Fi (2.4 GHz only). Please allow the app to access your cellphone's Bluetooth before connecting. The app will help you automatically find your device.

Also, please enable the app to access your cellphone's location so that the app and device can obtain weather data for your city from the service provider.

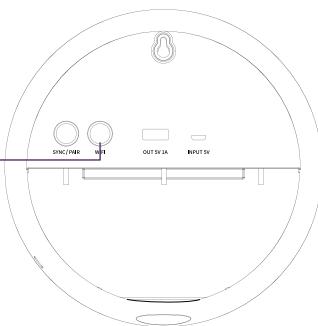
2. Wi-Fi connecting mode

- ① Plug in to power, the flashing  indicates the device is now under Wi-Fi connecting mode, ready for connection;
- ② If  stays solid, Long-press "**WiFi**" button till flashes to enter Wi-Fi connecting mode.



WiFi icon flashes

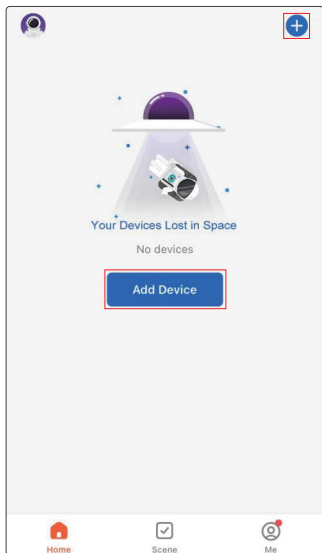
Long press WIFI button



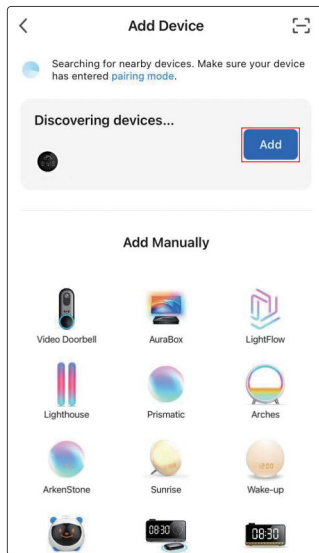
APP Guidance

1. Connect device to app

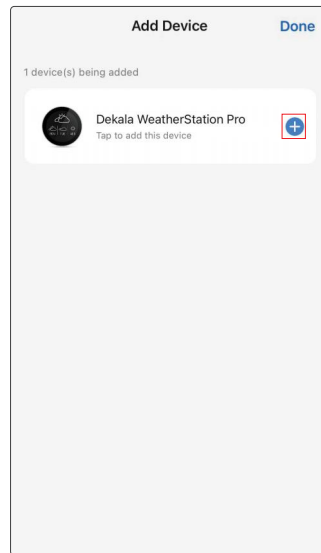
① Open up "Dekala" app, click "**+**" or "Add Device";



② Turn on Bluetooth as prompted, click on "Add";



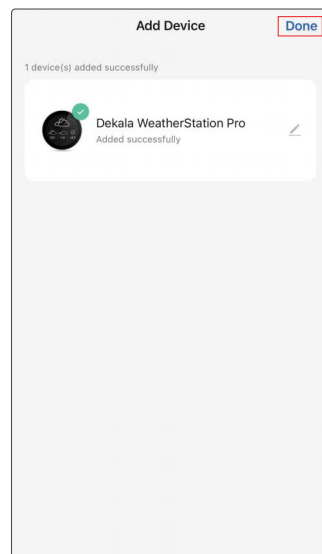
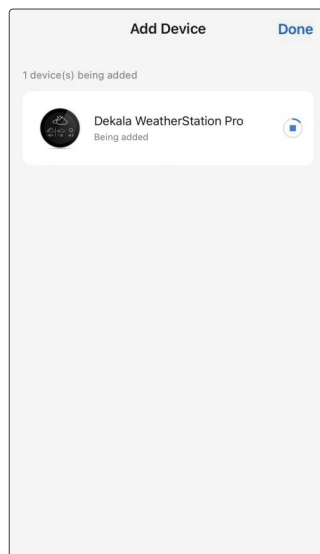
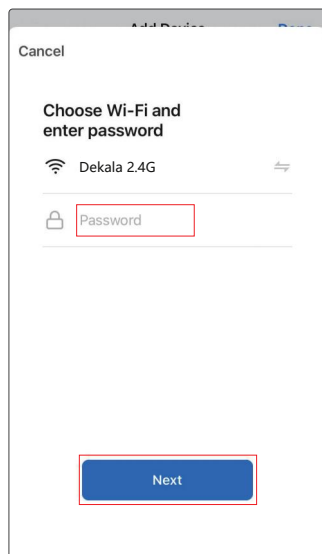
③ Select the device you want to connect and click "**+**" on the right;



④ Please type in the 2.4 GHz Wi-Fi password and click on **"Next"** (make sure that both your smartphone and the Dekala app are connected to the 2.4 GHz Wi-Fi network);

⑤ When connecting, please put the device, your smartphone, and the router in the same area, as close to each other as possible;

⑥ Once the device has successfully connected to your 2.4 GHz Wi-Fi network, you can choose to rename it. Click on **"Done"** to complete the Wi-Fi setup process.



2. WeatherStation Pro Home Page

The screenshot displays the Dekala WeatherStation Pro app interface. The top status bar shows the time 04:35 PM, date Mon, 4, July, and location SZ. Below this, the current weather is shown as cloudy with rain, with a temperature of 82.4 °F and humidity of 89%. The forecast for the next three days (Tuesday, Wednesday, Thursday) shows temperatures ranging from 78.8°F to 80.6°F. An alarm clock setting is visible, set for 08:00 AM every day, with a toggle switch currently off. The base unit data section shows a temperature of 81.9 °F and humidity of 76%. The sensor 1 data section shows a temperature of 82.0 °F and humidity of 78%. A low battery warning icon is present in the sensor 1 data section.

Time and date

Sunset time

Geographical location

UV

Weather data
(weather status; current temperature & humidity)

Weather forecast for the next three days
(weather status; highest/lowest temperature; day of the week)

Alarm clock setting

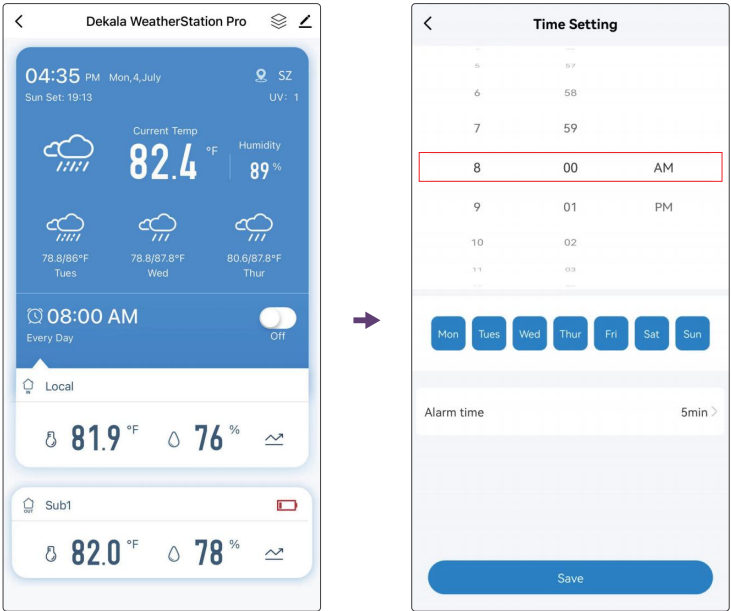
Base Unit data
(temperature; humidity; alarm setting)

Sensor 1 data
(temperature; humidity; alarm setting)

Low battery warning
(when Sensor battery is less than 10%)

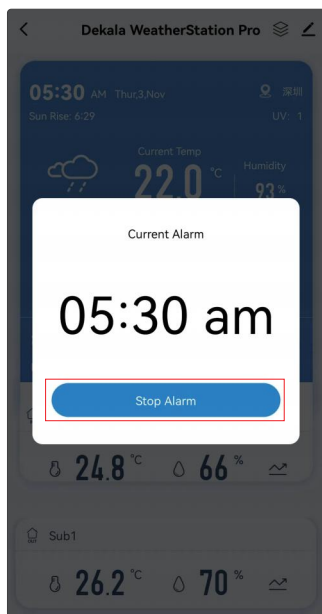
3. Alarm Clock

(1) To set an alarm clock, you can only use the app;

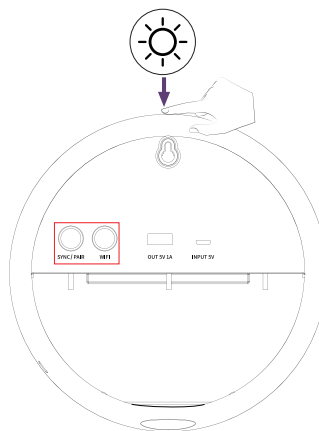


(2) Turn Off Alarm Clock:

① Turn off alarm clock by App;

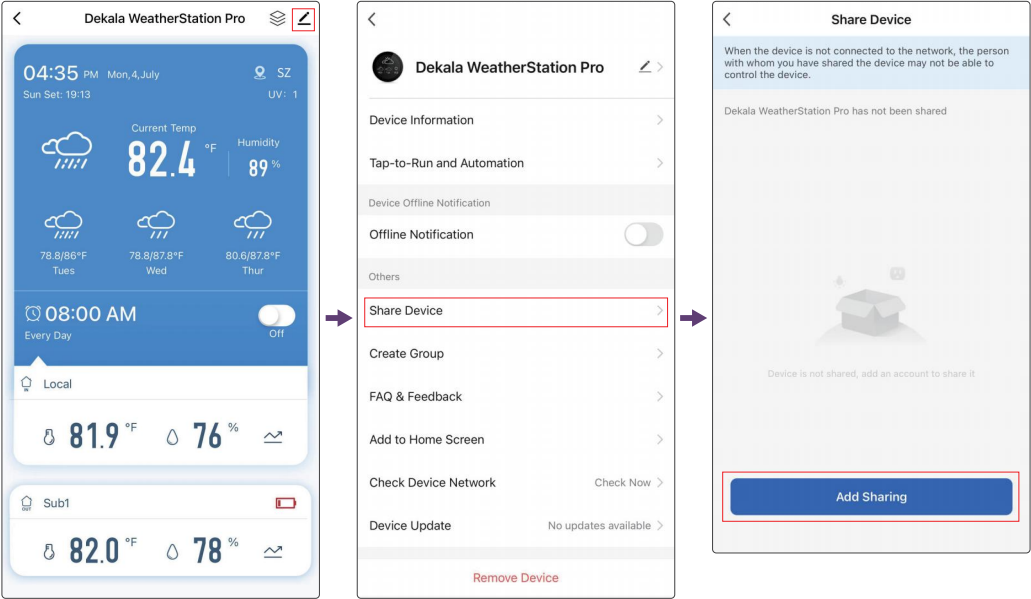


② Turn off alarm clock by buttons ☀️ / 🌙 / 🌙.



4. Share Device

Click the "✎" icon located in the upper right corner, then find the "Share Device" option to share the data.



FAQS

1. The device cannot connect?

- ① Please place the router, device, and mobile phone in the same area (as closely as possible).
- ② Ensure that your Wi-Fi signal is strong and usable at least (only 2.4GHz Wi-Fi networks are supported).
- ③ To connect to a different smartphone or Wi-Fi network, long-press to re-enter Wi-Fi connecting mode.

2. What if weather data is not available or accurate?

Reconnect the Base Unit with 2.4GHz Wi-Fi first, and the weather data will automatically be obtained and refreshed after the network is available. The weather data will update every 15 minutes. Allow Dekala(App) to access your location for accurate data. Our customer service team is available 24/7 for troubleshooting.

3. Sensor data does not display on Base Unit/Sensor is disconnected?

- ① Keep devices at least 3ft/9m away from electronics like TVs, computers, microwaves, etc., and pay attention to the working distance.
- ② Long-press the button on Sensor and check if a red spot is shown (battery run out if no red spot).
- ③ Press the "SYNC/PAIR" button on Base Unit, and then press the button on Sensor to synchronize the data with Base Unit to display.

4. Failed to synchronize Base Unit with Sensor?

- ① Long-press the "SYNC/PAIR" button on Base Unit to clear all connected channels before entering sync mode. You will hear a beep three times to indicate you are in sync mode.
- ② Press and hold the button of the remote sensor, and you will hear a beep once to indicate sync success. A Base Unit can be paired with up to 3 Sensors.