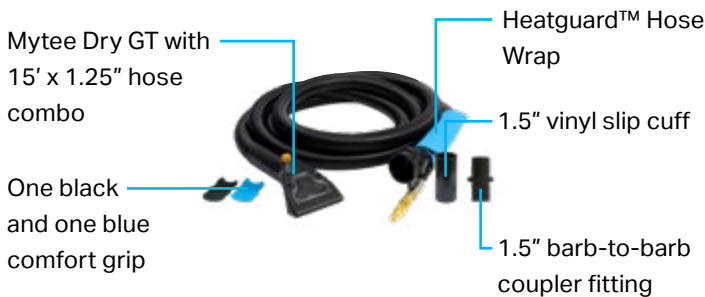


Congratulations on the purchase of your new Mytee Dry GT Upholstery Tool! With proper care and maintenance, we believe this tool will be a valuable part of your cleaning arsenal for years to come.

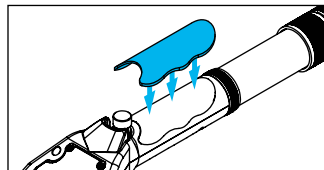
Please note that neglect, abuse, or improper use of this tool will void the warranty. **Before using this tool, please read and understand this manual thoroughly.**

1 - Package Contents



2 - Setup

Choose between the included blue and black comfort grips. Clean the indentation area on the tool thoroughly with alcohol. Peel off the adhesive backing and stick the grip onto the tool within the indentation.



The vacuum hose can be connected directly to an extractor. If a longer hose length is necessary, connect to another hose using the included barb-to-barb fitting. Connect the male quick connect fitting from the solution line to the female solution quick connect fitting either on the extractor or a longer solution hose.

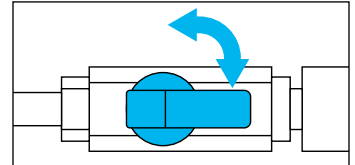


WARNING Brass fittings can be extremely hot during and after use. Tightly wrap the included Heatguard Hose Wrap around exposed fittings to prevent burns.

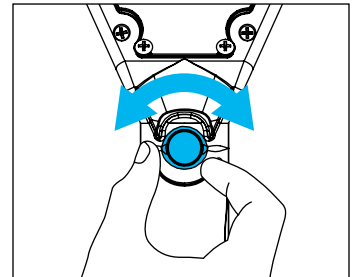
3 - Using the Mytee Dry GT in the Field

1. After the Mytee Dry GT is connected to your extractor, turn on the extractor's vacuum(s) and then the solution pump (if they're on separate switches).

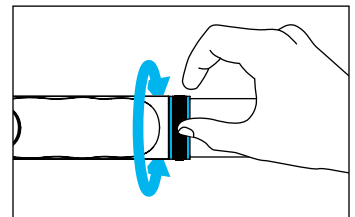
2. Make sure the ball valve at the end of the solution hose is turned parallel to the hose, allowing solution to flow through.



3. Dial in the desired amount of solution flow using the flow control knob. The amount of solution flow needed will depend on the material, its absorbency, and how soiled it is. Turn the knob counterclockwise to restrict flow and clockwise for higher flow.



4. Use the vacuum release dial to relieve some suction if necessary. In general, you'll want to relieve more vacuum the more delicate the material is. Just twist the dial to reveal the vacuum release holes.



5. Begin cleaning by moving the cleaning head of the tool back and forth on the upholstery material.

4 - Maintenance

Maintenance Action	Frequency
Rinse out any left over chemicals or dirt residue by running clean water through the tool.	After each use.
Check spray bar for any clogged orifices. If there's a clog, clear the obstruction with a small needle.	After each use.

Clean the inline filter behind the quick connect fitting on the solution hose (#21 in the diagram below).	When there's a noticeable loss of solution flow.
Wipe the tool down with a damp cloth.	As often as needed.

5 - Useful Tips

Rinsing out inside the tool.

If there's a buildup of dirt inside the tool that can't be removed by running clean water through it, remove the clear window in order to clean out the inside of the tool. When done, re-attach the window.

Cutting off solution flow.

Fine-tuning of the solution flow can be done with the flow control knob on top of the tool. You can also completely shut off flow by turning the same knob all the way clockwise.

Switching between hose cuffs.

To remove a hose cuff from the hose, twist the cuff clockwise until it comes off. Twist a new cuff all the way on using a counter clockwise motion.