



Welcome
Thank you for your purchase.
Your new thermostat will provide uniform and comfortable temperature control throughout every room in your property. We bring together technology, craftsmanship and the highest quality materials to provide you with a safe, reliable product combined with sleek, contemporary design.
Please read this installation/ programming manual for comprehensive instructions on installing and operating your thermostat. Please also ensure a suitably qualified person installs your thermostat and complies with all local regulations.

In the box you will find			
Thermostat	1pc	Screws	2pc
User Guide	1pc		
QC Passed	1pc		

ABOUT YOUR THERMOSTATS

BAC- 8000 series Modern square Touch Screen Room Thermostats .are designed to on / off control the fans and valves in air conditioner applications via comparison of the room temperature and settingtemp. As reaching the aim of comfort and saving energy.

MODEL DEFINITION

A: Two pipe; Control Fan Coil Unit and Two Wired Motorized Valve
M: Two pipe; Control Fan Coil Unit and 0-10V Motorized Valve
E: Four pipe; Control Fan Coil Unit and Two Wired Heat Valve andTwo Wired Cool Valve.
N: Modbus RTU communication
W : Wifi connection
K : Keycard
T : Clock
W2 : Window
P : Programmable
E : External Sensor
For example: BAC-8000 ALW

FEATURES

On Appearance

- 1. Negative black screen will bring you to a secret world.
- 2. 4.8 inch Large colorful screen display area, creates your colorful life.
- 3. Touch buttons to make simple operation.
- 4. Amazing Silver Frame opens your modern life.
- 5. The visible thickness above the wall is only 15mm.
- 6. The snap connection allows you to easily install.
- 7. 86mm hidden box and European 60mm round box is suitable.
- 8. White, black or brushed stainless steel for your selection.
- 9. Wrap-around cooling holes help heat to escape quickly and avoid affecting temperature detection.

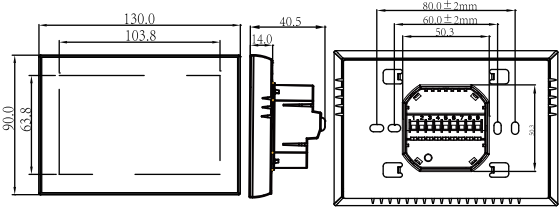
On Functionality

- 1. Powerful functions are available such as WIFI etc.,
- 2. 1 accuracy keeps temperature within the level you set.
- 3. C°or F° can be customized.
- 4. Data memory when power is off.
- 5. 5+1+1 six periods programmable maximize comfort and economy.
- 6. Temporary programmable.
- 7. All setting languages synchronize your time zone, address and language.
- 8. No limit to add thermostats in App and support Smart Scene..
- 9. Create thermostat group to Centralized control.
- 10. Integrated with Amazon Echo, Google Home, Tmall Genie.
- 11. Support device sharing.
- 12. Weather, UV index, humidity display help you decide what to wear today.

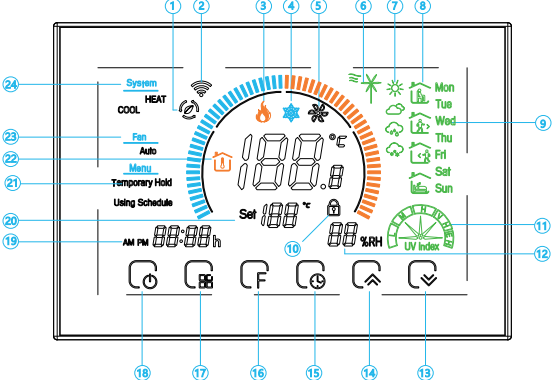
TECHNICAL DATA

Power Supply: 95 ~ 240 VAC, 50 ~ 60HZ
Fan Relay Amps Resistance: 5A; Inductive: 3A
Valve Relay Amps Resistance: 3A; Inductive: 1A
Sensor: NTC3950, 10K
Set Temp. Range: 5 -35℃
Accuracy: ±1℃
Display Temp. Range: 5 ~ 99℃
Ambient Temp.:0~45℃
Ambient Humidity: 5 ~ 95 % RH (Non Condensing)
Storage Temp.: -5~ 45℃
Timing Error: < 1%
Power Consumption: <1.5W
Shell Material: PC +ABS (Fireproof)
Installation Box: 86 * 86mm Square or European 60mm Round
BoxWire Terminals: Wire 2 X 1.5 mm² or 1 x2.5 mm²
Protection Class: IP20
Buttons: Capacitive Touch Buttons

DIMENSION



HOME SCREEN QUICK REFERENCE



- 1 WiFi (AP mode)
- 2 Wifi (EZ mode)
- 3 Heating on
- 4 Cooling on
- 5 Ventilation
- 6 Fan speed
- 7 Weather
- 8 Periods
- 9 Monday to Sunday
- 10 Lock
- 11 Ultraviolet intensity
- 12 The humidity outdoor
- 13 Down Button
- 14 Up Button
- 15 Clock
- 16 Fan
- 17 Mode
- 18 Power
- 19 Time
- 20 Set temp.
- 21 Menu
- 22 Room Temp.
- 23 Fan auto
- 24 System model

Note:

- 1. The displayed humidity, weather, and ultraviolet are outdoor data;
- 2. The data of the weather station is pushed 3-4 minutes after being connected to the Internet, and updated every half an hour;

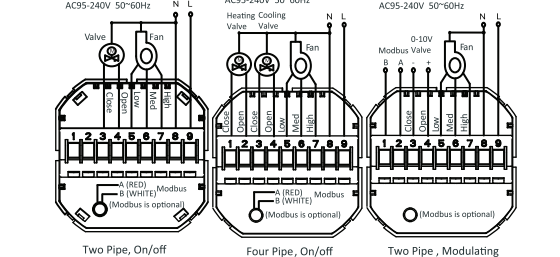
BEFORE WIRING AND INSTALLING

- 1. Read these instructions carefully. Failure to follow them could damage the product or cause a hazardous condition.
- 2. Check the ratings given in the instructions and on the product to make sure the product is suitable for your application.
- 3. Installer must be a trained, experienced service technician.
- 4. After installation is complete, check out product operation as provided in these instructions.

CAUTION

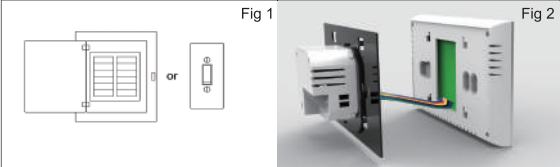
Electrical Shock or Equipment Damage Hazard. Can shock individuals or short equipment circuitry.
Disconnect power supply before installation.

WIRING

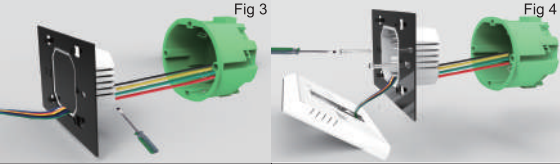


INSTALLATION

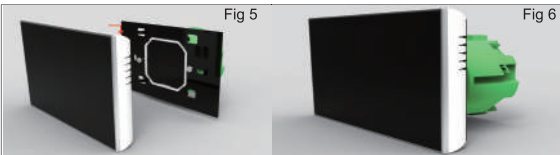
Your thermostat is suitable for installation within a standard 86mm pattress box or European 60mm pattress box.
Step 1. Keep power off. See Fig 1.
Step 2. Remove the mounting Plate by rotating the LCD part. See Fig 2.



Step 3. Connect power supply, load into the appropriate terminals. (see "Wiring your thermostat" for details and Fig 3).
Step 4. Fix the mounting plate into the wall with screws in



Step 5. Fasten body of thermostat and the mounting plate through rotating. See Fig 5.
Step 6. Installation complete. See Fig 6.



OPERATION

1.Power On/off: Press "⏻" to turn the thermostat on/off.
2.Function & Programmable
3.Press "⏻" once, you will see Permanent Hold flashing, press "⏻" to switch to Using Schedule. Press "⏻" again and press "⏻" to switch to Permanent Hold.
Permanent Hold-Manual. In this mode, Press "⏻ / ⏻" to set temperature.
Using Schedule. 7 days a week, four periods programmable daily.
4.Adjusting/Setting the Clock
Press "⏻" once, you will see Permanent Hold flashing, press "⏻" again, you will see the minutes of time flashing.
Press the "⏻ / ⏻" to set your minutes.
Then press "⏻", you will see the hour of the time flashing, press "⏻ / ⏻" to set your hour.
Then press "⏻", you will see the week of the time flashing (on the right side of the screen), press the "⏻ / ⏻" to set your week.
5.Locking your Thermostat
Press and hold the "⏻ and ⏻" for 5 seconds to lock/unlock your thermostat In item 3 of high senior options, you can select full lock or half lock.
6.Adjusting/Setting the Programmable Schedules
Press "⏻" five times in a row. You can see "MON~FRI" and "🌞", the minutes of the time are flashing, press the "⏻ / ⏻" to set the minutes;

Then press "⏻", the hour of the time is flashing, press "⏻ / ⏻" to set the hour;
Then press "⏻", the setting temperature is flashing, press "⏻ / ⏻" to set the temperature;
In this way, you have completed the setting of the 1st time period.
Repeat the above steps to complete the 2-6th time period from Monday to Friday.
Press "⏻" again to enter Saturday plan setting (SAT will be displayed on the right side of the screen).
Repeat the above process to set the period and temperature.
And Sunday timetable.
Press "⏻" again to confirm and exit.

Default settings for program schedule

Time display	WEEKDAY (MONDAY – FRIDAY) (1, 2, 3 & 4 shows on screen)		WEEKEND (SATURDAY) (6 shows on screen)		WEEKEND (SATURDAY) (7 shows on screen)	
	TIME	TEMPERATURE	TIME	TEMPERATURE	TIME	TEMPERATURE
Period 1	06:00	20℃	06:00	20℃	06:00	20℃
Period 2	08:00	15℃	08:00	20℃	08:00	20℃
Period 3	11:30	15℃	11:30	20℃	11:30	20℃
Period 4	13:30	15℃	13:30	20℃	13:30	20℃
Period 5	17:00	22℃	17:00	20℃	17:00	20℃
Period 6	22:00	15℃	22:00	15℃	22:00	15℃

In the mode of programmable, set temp., time and timing on/off couldn't be adjusted.
A separate schedule may be set for weekdays (Mon – Fri) and for weekends (Sat or Sun).

7.Setting the Functions and Options

When turned off, Press "⏻" in the order to reach system function. Then press "⏻" to scroll through the available functions, and use the "⏻ / ⏻" arrows to change the available options. All settings are confirmed automatically.

Code	Function	Setting and options	Default
1	Temperature compensation	-9 to 9℃	-3
2	Deadzone Temp	1-5℃	01
3	Time Display	0:12h 01:24h	01
4	Button Locking	01:All buttons are locked except power button 01:All buttons are locked	01
5	Fan controllable	0: Controllable 1: Uncontrollable	0
6	Min.Set Temp	5-15℃	5
7	Min.Set Temp	5-45℃	35
8	Standby Brightness	3-99	20
9	Energy saving Mode	00:Energy saving Mode 01:Non-energy saving Mode	00
A	Energy saving Temp	0-30℃	20
B	Energy-saving refrigeration temperature	0-30℃	26

ABOUT WIFI

WI-FI CONNECTION

Before using your Wi-Fi thermostat for the first time,you must configure the Wi-Fi signal and settings through your smartphone or tablet ,This will allow communication between your connected devices

Step 1 Download your APP (Fig1-1)



Search for "Smartlife" in Apple Store or Google Play or use a browser to scan the QR code above (Figure 1-2), and complete account registration and installation according to the guidance of the APP.

Step 2. Connect the thermostat
Check the tutorial below to complete the connection and setup.

Method 1: Scan the QR code to configure the network guide (Fig 2.1-Fig 2.3)

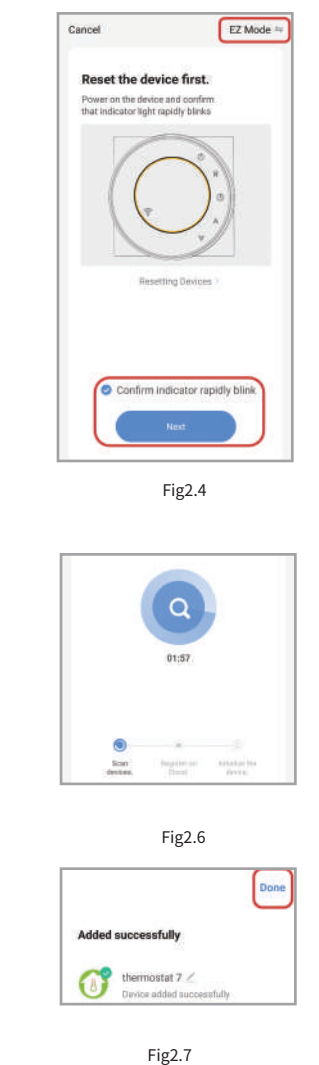


Method 2: Ordinary distribution network guidance (Fig. 2. 1&Fig. 2.3.1)

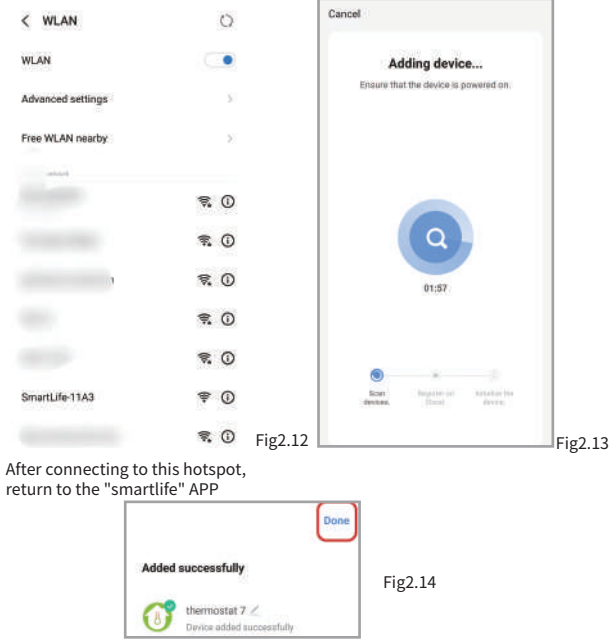
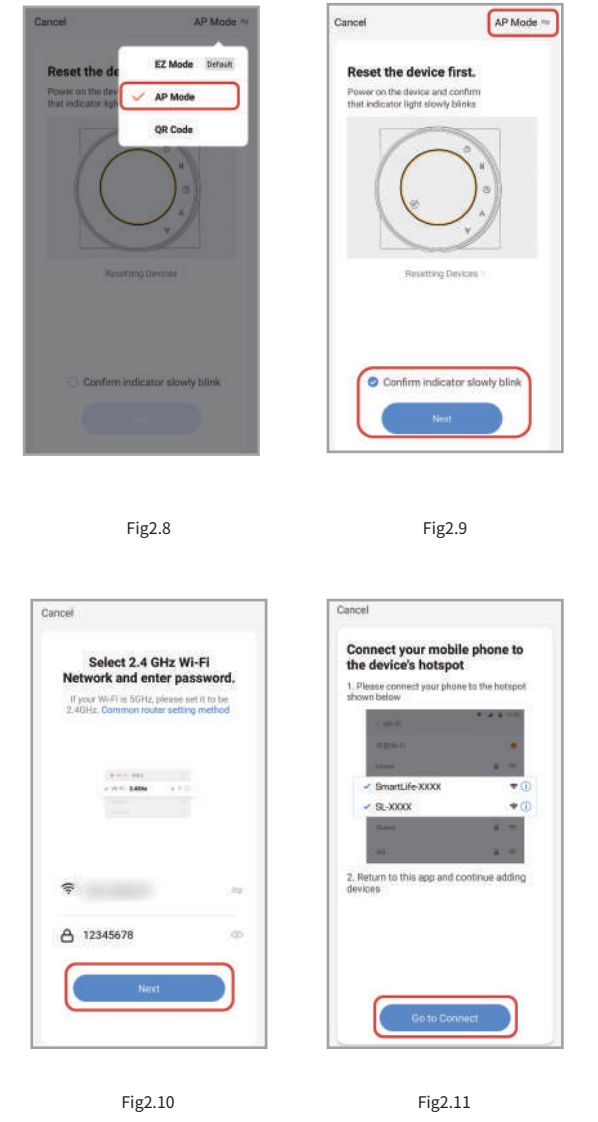


Network distribution mode:

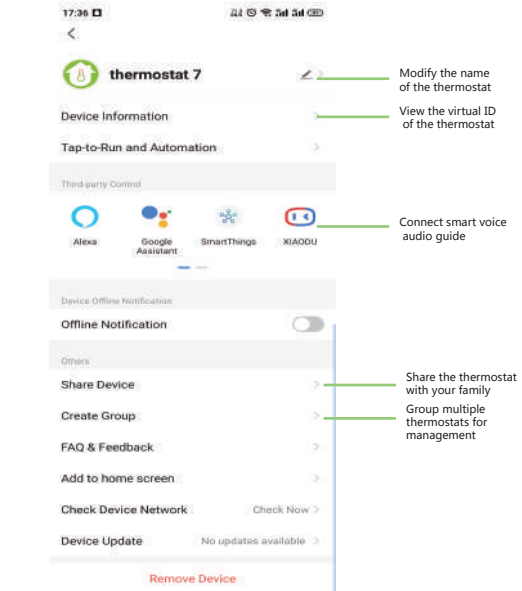
1、EZ Mode
When the thermostat is off, press and hold the "V" until the thermostat screen flashes quickly and displays the "Wi-Fi" icon, and then operate according to the following figure (Fig 2.4-Fig 2.7).



2、AP Mode
When the thermostat is off, press and hold the "V" until the thermostat screen flashes slowly and the "Wi-Fi" icon is displayed (if the "Wi-Fi" icon appears, continue to press the "V" until the thermostat screen Flashes slowly and displays the "Wi-Fi" icon), and then operate according to the following figure (Fig 2.8-Fig 2.14).



More settings



APP operation interface description (FCU thermostat)



SIMPLE EXCEPTION HANDLING

No.	Phenomenons	Handling
1	Power is on but without display.	* Check if the terminals between LCD panel and Power Unit Box is loosen.
2	Without output but display works.	* Use a new LCD panel or new Power Unit Box to replace the old one.
3	Room Temp. Is a little different from the actual.	* Do temperature calibration in item 1 of high senior options

SERVICE

Your thermostat carries an 24 months warranty from date of purchase. Service outwith the warranty period may incur a charge. More detail please contact with us directly.