

Loading Description (.dsc) Files Into The E2

Overview

This document will guide you through setting up and commissioning devices with .dsc files in the E2 controller.



How to determine when a description file is needed From the E2 Screen

1. Press **Menu**, **& 7** (System Configuration), **& 7** (Network Setup), **@ 2** (Connected I/O Boards & Controllers).
2. Press **F2** (NEXT TAB) to go to the **C3: ECT** tab. If the device and version appear in the list on the screen, the device is “**native**” in the E2 and a description file does not need to be loaded. If the device and version do not appear in the list, go to Step 1 and load the appropriate description file.

From UltraSite

1. Select the E2 from the navigation tree to which you will add the device (in Online or Offline mode) and right-click on the E2.
2. Select Device **Setup** > **Network/Board Setup** > **Add I/O**, and go to the **ECT (Equipment Connectivity)** tab. If the device and version appear in the list on the screen, the device is “**native**” in the E2 and a description file does not need to be loaded. If the device and version do not appear in the list, go to Step 1 and load the appropriate description file.

How to Find the Device Version Number

In order for the device commissioning to work correctly, the version of the device must match the version selected in the E2 application list. If they do not match, a **Type Mismatch** error will occur. If you are unsure of your device's version number, it can be found on the device label.

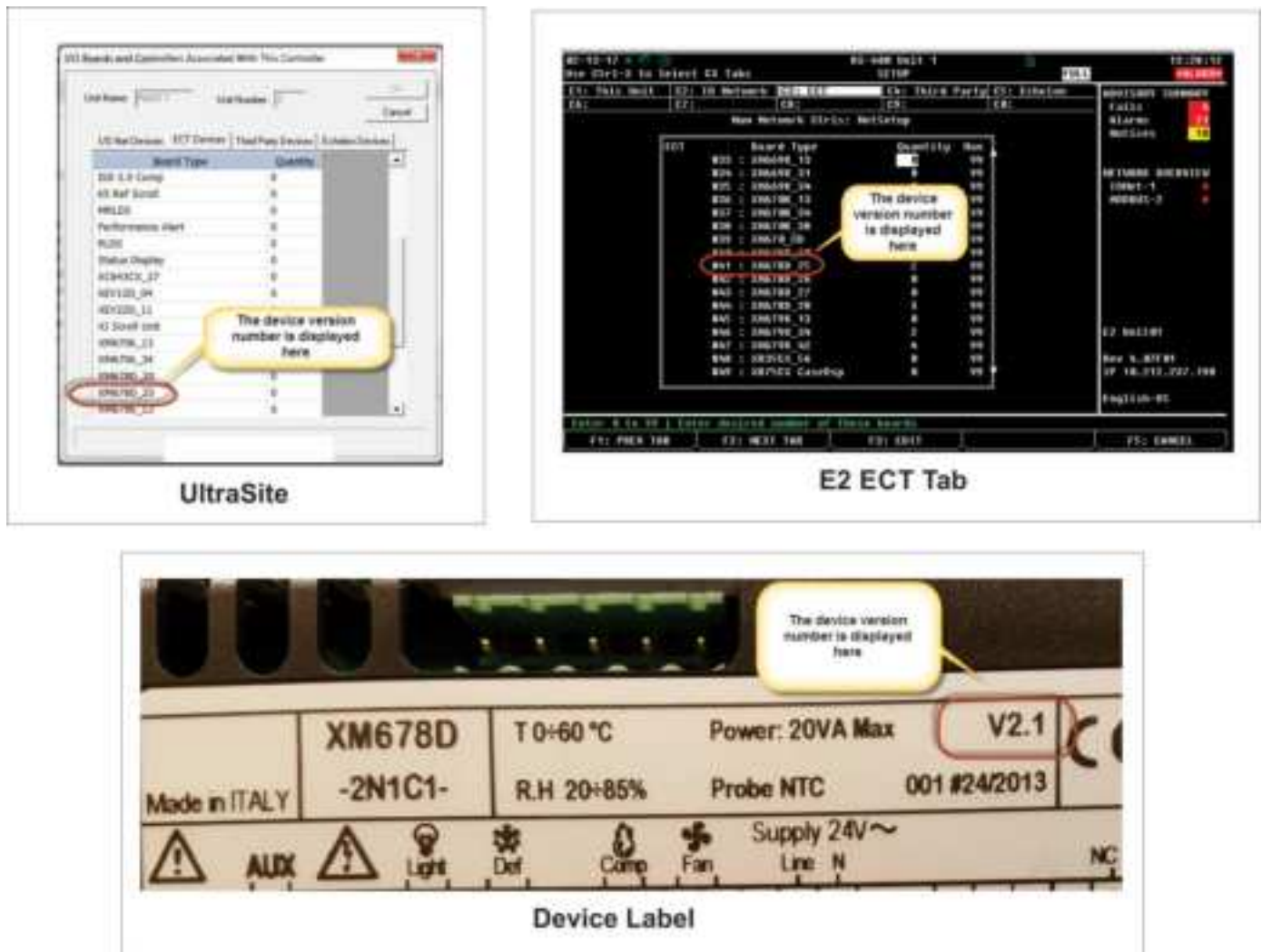


Figure 1 - Identifying Device Version Numbers

STEP 1: Upload the Description File (xxx-xxxx) to the E2 Controller

1. Select the controller in UltraSite.
2. Right-click the controller and select **Upload Description File**:

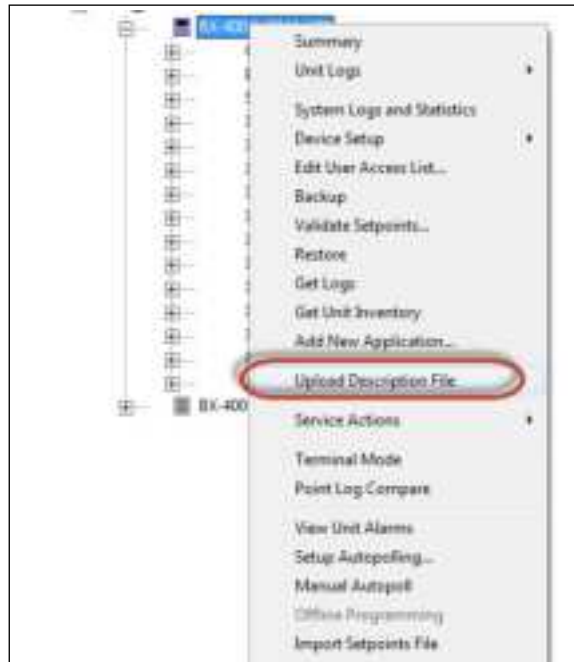


Figure 2 - Upload .dsc File

3. Select **Browse** to go to location where the description (.dsc) file was saved:



Figure 3 - Locate .dsc File

4. Select the desired description (.dsc) file and click **Open**:

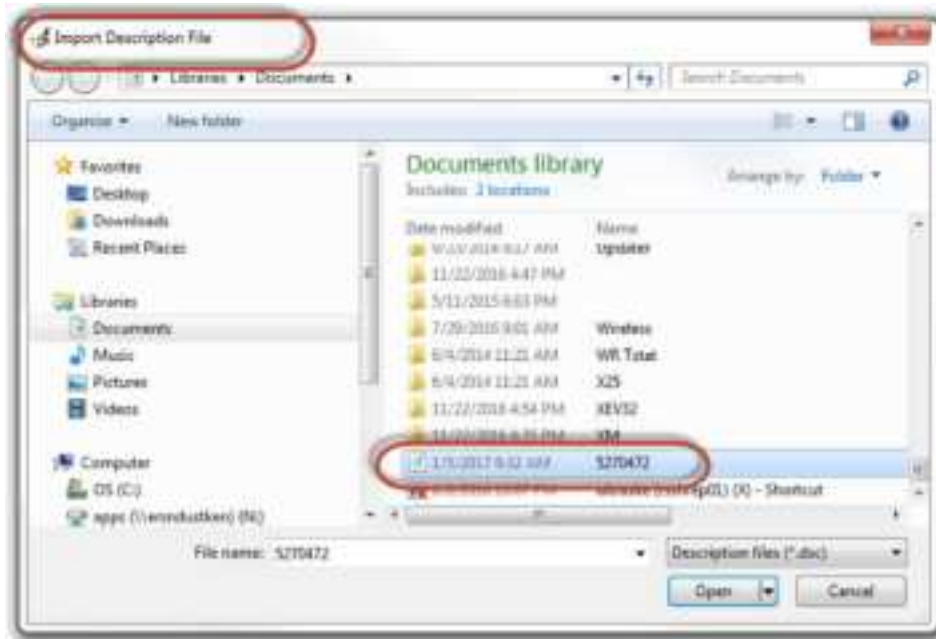


Figure 4 - Select .dsc File and Import

5. Right-click the controller. Under **Service Actions**, select **Reset Unit** to reboot. The controller must be rebooted to see the description (.dsc) file:

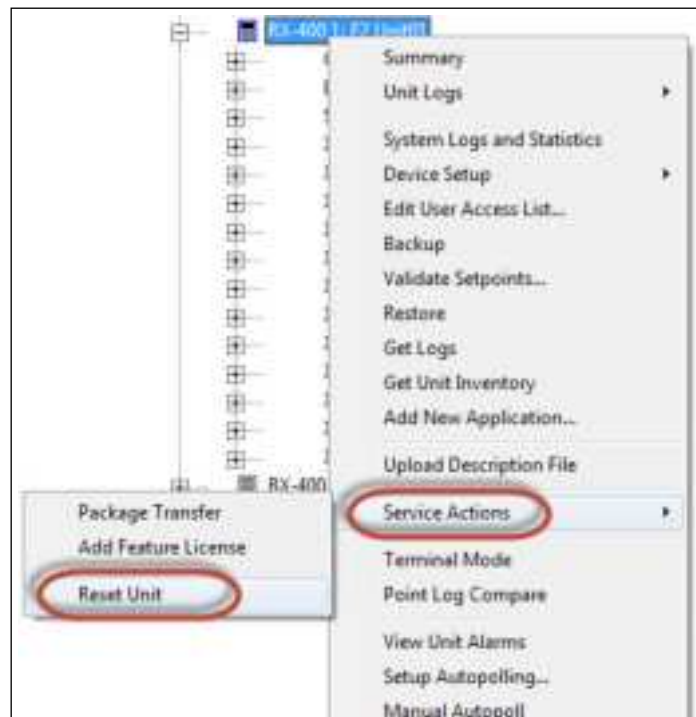


Figure 5 - Reboot the Controller

6. After the controller reboots, in the navigation tree, go to **Device Setup > Network Board Setup** to add the device:

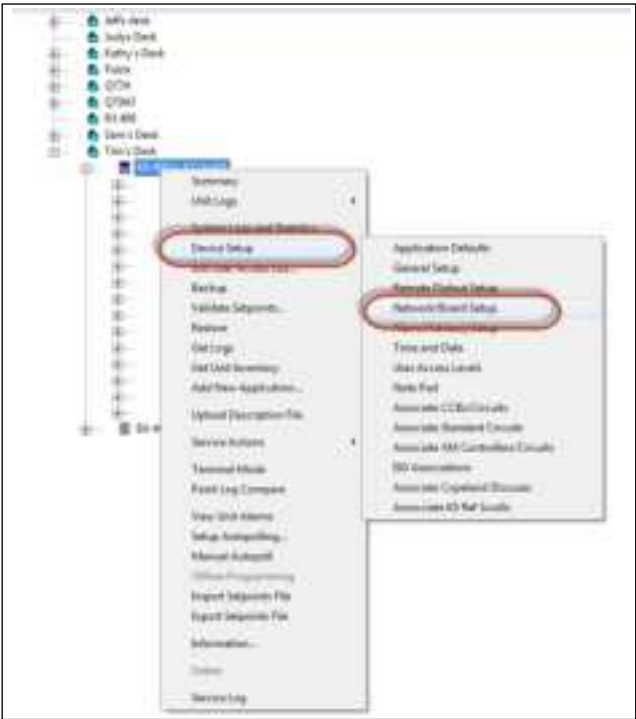


Figure 6 - Network/Board Setup Controller

7. Select **Add Ctr/IO** to add a device:

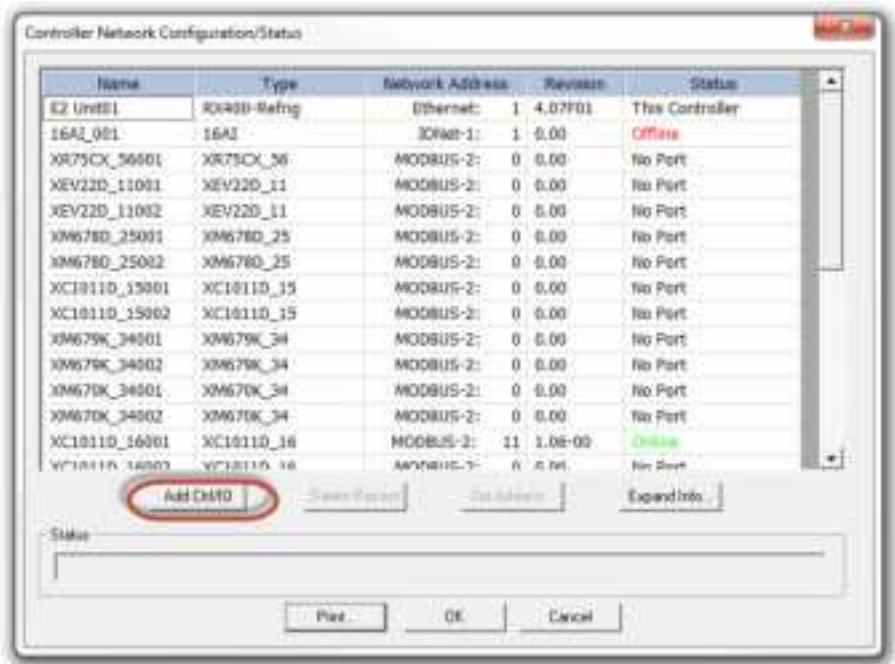


Figure 7 - Adding the Device

8. Select the **ECT Devices** tab and select the desired device. Enter the number of devices and set up the COM port address and commission the devices as usual:

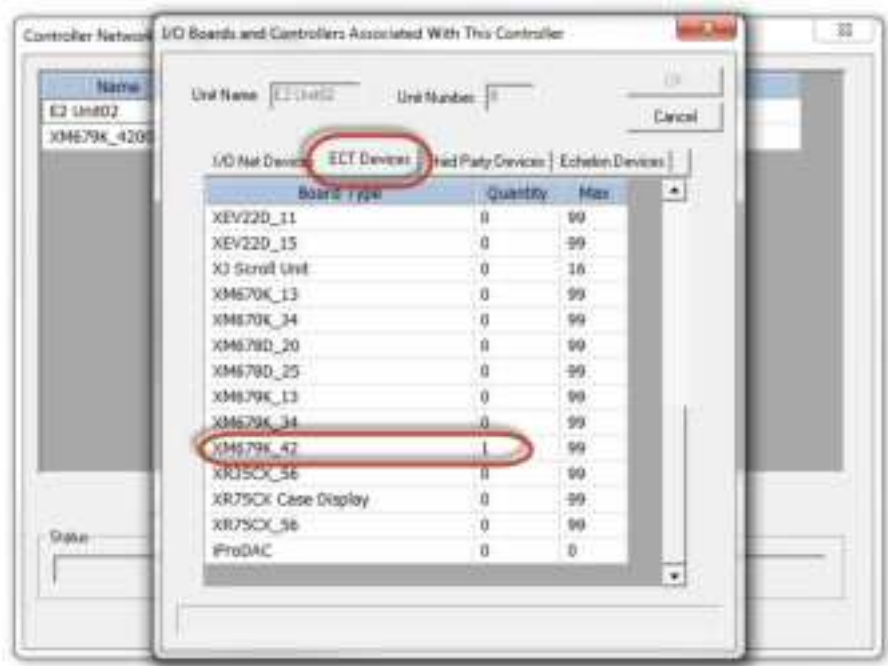
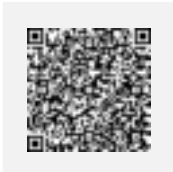


Figure 8 - ECT Tab - Add Number of Devices



Visit our website at copeland.com/en-us/products/controls-monitoring-systems for the latest technical documentation and updates.
For Technical Support call **833-409-7505** or email ColdChain.TechnicalServices@Copeland.com