



X1K

FCC ID: 2AZL7-ZS-GX1S

FHD Battery Security Camera
QUICK START GUIDE

Welcome

Thank you for choosing Twufy. Please read this quick start guide carefully before using this product, for further information please scan the QR code below to download user manual on ZUMIMALL website.



**Please scan the QR code to
get the detailed electronic manual.**

NOTE: The battery of your camera may drain faster below 32°F (0°C). When you receive low-battery alert on your app, it is suggested to take the camera down and fully recharge it indoor, or you can connect it to the power cable all the time.



Scan "zumimall" QR
code to purchase products



Follow @zumimalloffice
on Facebook



@zumimall



@zumimalloffice



@zumimallcam



@zumimallcamera

Product Service

Email: support@zumimall.com

Distributor: distributor@zumimall.com

More About Us

Web: www.zumimall.com

Facebook: www.facebook.com/zumimalloffice

Amazon Store: www.amazon.com/zumimall

3 YEARS warranty

1-ON-1 Customer Service

How to Activate it?

Send us Order number via email or Scan the QR Code

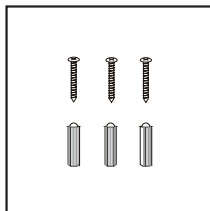
Email: support@zumimall.com



Brand Story

Founded in 2008, Zumimall focuses on the design and research of intelligent security technology. Zumimall insists on taking consumer needs as its core and strives to create smart home products that lead a global home fashion trend for consumers. Zumimall believes that craftsmanship creates top quality and technology changes life. With high-quality products and first-class service, Zumimall won the love and trust of millions of customers as soon as it went public. Over the years, Zumimall has served 45 continents of America, covering 80% of the population. Zumimall is the provider of a smart lifestyle and a guardian of the wonderful moments of your life.

1. What's in the Box

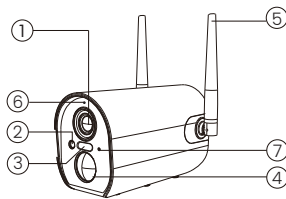


ZUMIMALL Battery Camera * 1
Outdoor Mount *1
Quick User Guide *1
Screws Set *2(1-Camera/1-Solar Panel)

Solar Panel with Cable *1
Solar Panel Mount*1
USB Cable *1

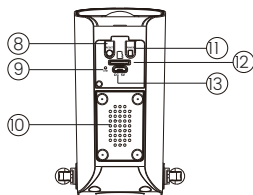
NOTE: Micro SD card and power adapter are not included.

2. Product Diagram



- ① Camera Lens
- ② IR Lamp
- ③ White Light
- ④ PIR Sensor

- ⑤ Antenna
- ⑥ Camera Mode Indicator
- ⑦ Microphone
- ⑧ Reset Button



- ⑨ LED Indicator
- ⑩ Speaker
- ⑪ Power Button
- ⑫ SD Card Slot
- ⑬ USB Port

Power Button	Keep pressing for 5-10 seconds to power on/power off
Reset Button	Keep pressing for 5-10 seconds to reset
Blink Slowly in Red	Awaiting Wi-Fi connection, ready for adding devices
Blink Fast in Red	Wi-Fi connecting
Solid in Red	Network problem
Solid in Blue	Wi-Fi connected, camera running normally
Blink Slowly in Blue	Firmware update

3. Download and Install App

Download ZUMIMALL App from Google Play™ or App Store™.
Or scan the QR codes as below, with your smart phone.

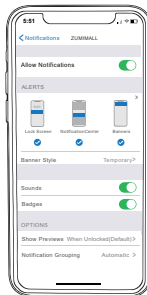
NOTE: Google Play™ is a trademark of Google Inc.

App Store™ is a service mark of Apple Inc.



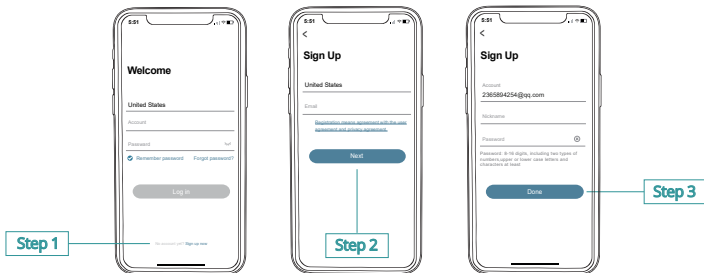
NOTE: Please turn on both of the following permissions.

- ① Allow ZUMIMALL App to access mobile cellular data and wireless LAN, otherwise it will fail to connect the camera.
- ② Allow ZUMIMALL App to receive pushed messages, otherwise, the phone will not receive alarms when motion is detected.



4. Account Registration

New user needs to sign up ZUMIMALL App with email address. Click 'Sign up' to create a New Account and follow the steps to complete registration.



5. Add Camera to App

5.1 Preparations for connection

- ① Insert a Micro SD Card into the camera to save video clips or you can start the 7-day free cloud service. Without Micro SD Card or cloud service, no video will be saved.
- ② The camera only works with 2.4GHz Wi-Fi, not support 5GHz.
- ③ When connecting to the network, please take the camera close to the router (Recommended within 10-15ft).

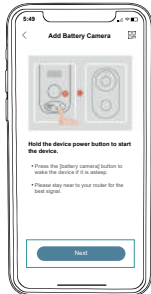
5.2 Connect Camera to App



Tap 'Add Device'



Select 'Battery Camera'



Turn on the Camera



Reset the Camera



Input Wi-Fi Password



Prepare the Scanning



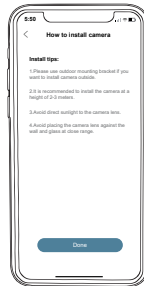
Scan QR Code when Indicator
Flashing Slowly in Red



Finished Installation
When Reaches 100%



Perform Network Diagnosis



View Installation Tips

ZUMIMALL™

(Old Version)

ZUMiMALL™

(New Version)

FCC ID: 2AZL7-ZS-GX1S



® 210-166310 Made in China

ZUMIMALL Logo Change Info