



Toyota Alarm System

USER MANUAL



Please read this manual for proper operation and keep it for future reference.



Toyota Alarm System

USER MANUAL

Section	Title	Page
1.0	Introduction	
2.0	Security Overview	
2.1	Arming the alarm system	
2.2	Disarming the alarm system	
3.0	Alarm Activation	
3.1	Switching off the alarm activation	
3.2	Alarm activation diagnostic	
3.3	Panic alarm (Car finder)	
3.4	Comfort automatic door locking	
4.0	Emergency alarm system override	
4.1	System override procedure	
5.0	Warranty	

Please read this manual for proper operation and keep it for future reference.



SECTION 1.0

Introduction

To reduce the possibility of the vehicle being broken into or stolen, the following precautions should always be taken when leaving the vehicle unattended.

- Close all windows. The smallest gap could present an opportunity to a thief. take all valuables with you, or lock them in the glove box or boot compartment. Do not leave vehicle ownership documents in the vehicle.
- Ensure all doors, the glove box and bonnet boot compartment are properly closed and the alarm system is armed.
- At night, park in a well illuminated area.

WARNING

No additions or modifications should be made to the security system installation or its components. Any repairs on the security system or its components should be undertaken by an Authorised UMW Toyota Motor Dealer.



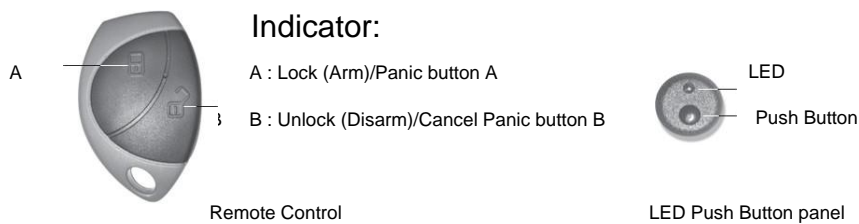
SECTION 2.0

Security Overview

Security overview

To assist in securing your car, the following features are provided.

Alarm system comprising warning alarm and perimeter protection with Remote Control electronically coded to the car.



2.1 Arming the alarm system

The alarm system is armed when the Remote Control is used to lock the car.

Press the lock button to lock the car. The turn signals will flash and beep twice, the alarm LED will light on for 5 seconds then fast blink to indicate that the alarm system is armed.

i Note

Door ajar warning

If any of the doors is ajar, the buzzer will issue 3 beeps and signal will flash 3 times, all doors will then lock and the alarm will arm.

2.2 Disarming the alarm system

The alarm system is disarmed when the Remote Control is used to unlock the car

Press the unlock button to unlock the car. The turn signals will flash and beep once and then the alarm LED goes off to indicate that the alarm system is disarmed.

i Note

If a door has not been opened within 30 seconds of unlocking the car, all doors will automatically relock and the alarm system rearms.



SECTION 3.0

Alarm Activation

3.0 Alarm activation

The system activates an alarm if the following unauthorised actions are carried out when the car is locked.



Opening of doors



Ignition ON

The alarm is sounded and turn signals flash for approximately 30 seconds per cycle up to a maximum of 9 cycles.

3.1 Switching off the alarm activation

The alarm can be switched off by pressing the unlock button twice.

3.2 Alarm activation diagnostic

If an alarm had activated, on unlocking the car with the Remote Control, the alarm will issue 5 beeps and signal will flash 5 times.

You can diagnose the cause of the alarm activation by opening the driver's door and switching ON the vehicle ignition (switch OFF and ON the ignition to review the diagnostics memory).

Check the alarm LED display:

1 flash - alarm activated by opening of driver/passenger door

2 flashes - alarm activated by switching ON the ignition

4 + 6 flashes - alarm activated by opening of sliding/back door

Note

The alarm activation diagnostic memory will be erased when the Remote Control is used to lock the vehicle and arm the alarm system.

3.3 Panic alarm (Car finder)

When the alarm is in armed mode (LED is blinking), press the lock button & hold for 5 seconds, the siren + horn will sound and turn signals will flash for 10 seconds.

3.4 Comfort automatic door locking

- When the car is driving with the speed of about 20km/hr, all doors will lock
- All doors will unlock when the car ignition is switched OFF



SECTION 4.0

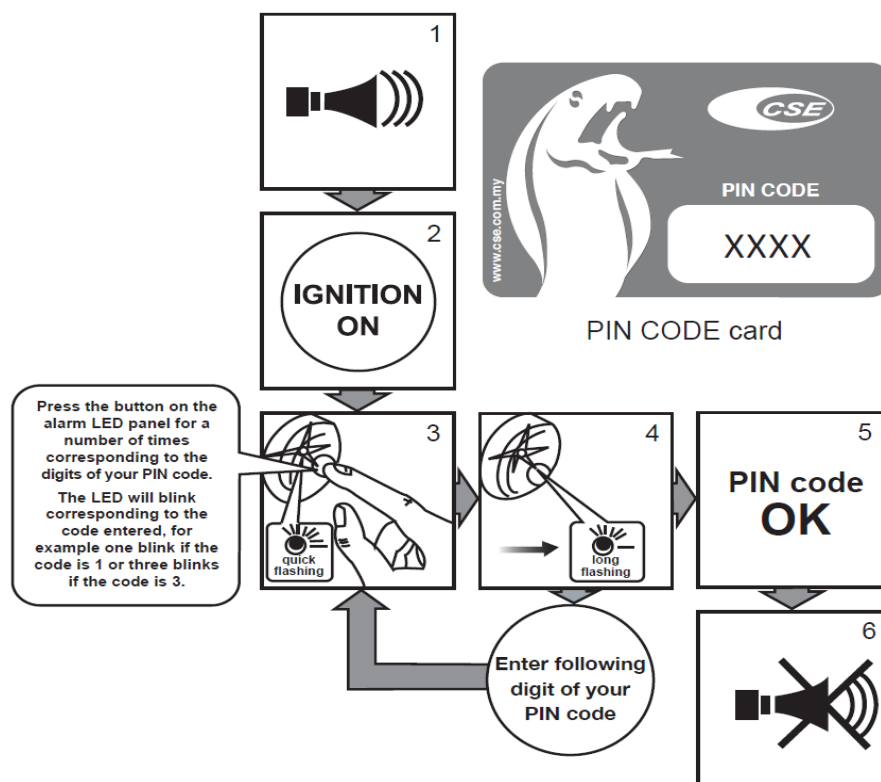
Emergency Alarm System Override

4.0 Emergency alarm system override

The alarm system can be disarmed manually if there is a malfunction with the Remote Control, for example the Remote Control is not able to unlock the vehicle remotely and you have to insert the mechanical key to manually unlock the vehicle. This will activate the alarm.

Proceed to manually override the system with the PIN code provided.

4.1 System override procedure



i Note

In case of an error while entering your PIN code, switch OFF and ON the ignition and start again from **Step 3**.

i Important

Copy the PIN code and keep the code card together with this manual in a safe place.



SECTION 5.0

Warranty

The Toyota vehicle security system comes under the vehicle warranty terms and conditions

The warranty is void if the system has been tampered with or display signs of tempering signs of tampering or negligence that are not due to manufacturer's defects.

For more information on the vehicle warranty terms and conditions, refer to an Authorised UMW Toyota Motor Dealer.