

# ECO Lines™ F80/F150 RGY Color Change Guide

This is a supplemental user manual for F-Series Line Projectors that have color switching. Line colors and sequences can be manually set and remain in memory, or they can automatically switch via switches or a 0-10V control signal.

Description

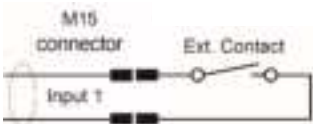
Each RGY line projector incorporates a control board for color changing functions. The control board is configured with two buttons: M (mode) and S (speed). There are two inputs to the control board: switching and variable voltage. Both inputs are wired to the control panel, switch contact in the front, along with the M and S buttons, and variable 0-10V contact in the rear.

**⚠ WARNING: Applying voltage to the switch contact input will damage the control module. Only the 0-10VDC input is configured for variable voltage.**

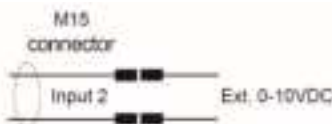
Color mode configuration

Switch voltage is designed to be configured with a switch such as a motion sensor and will alternate between selected modes based on the switch state. Variable voltage enables the projector to change between color presets based on the input voltage.

Switch voltage



Variable voltage



Input 1 – Switch voltage

Mode 1: open contact  
Mode 2: closed contact (dead short)  
Cycle mode 1 color: single press M button  
Cycle mode 2 color: single press M button  
while holding S button

Input 2 – Variable voltage

Mode 1: open contact	Off: 0-1V
Mode 2: closed contact (dead short)	Green: 1-2V
Cycle mode 1 color: single press M button	Red: 2-3V
Cycle mode 2 color: single press M button	Yellow: 3-4V
<u>while</u> holding S button	Green Flashing: 4-5V
Start: Off	Red Flashing: 5-6V
1: Green	Yellow Flashing: 6-7V
2: Red	Red/Green Alternating: 7-8V
3: Yellow	Green/Yellow Alternating: 8-9V
4: Green Flashing	Red/Yellow Alternating: 9-10V
5: Red Flashing	
6: Yellow Flashing	
7: Red/Green Alternating	
8: Green/Yellow Alternating	
9: Red/Yellow Alternating	
⌚ Order repeats	

See following flowchart for additional details on controller



## Controller logic flowchart

