



**BOSCH**

**Register** your  
new device on  
MyBosch now and  
get free benefits:  
**[bosch-home.com/  
welcome](https://bosch-home.com/welcome)**



# Cordless handstick vacuum cleaner

**BHNL...**

**BHN...L**

**[en]** Information for Use  
**[zh-tw]** 使用手冊

Cordless handstick vacuum cleaner  
直立式無線吸塵器

6  
11



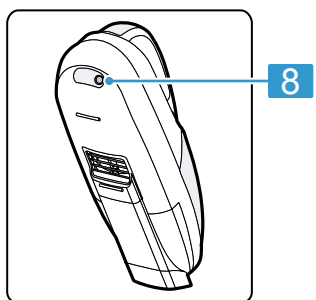
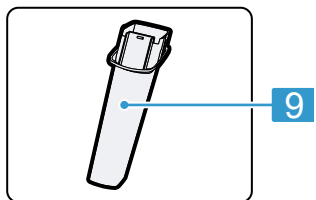
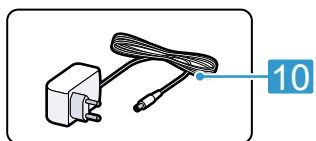
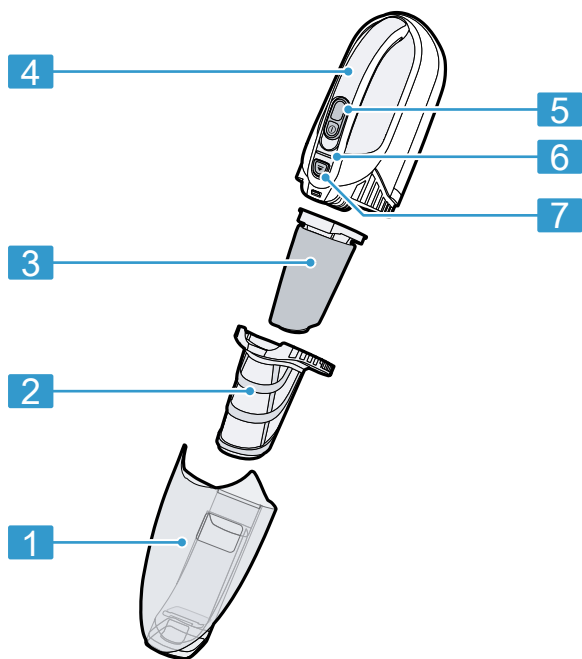
<https://digitalguide.bsh-group.com?mat-no=8001307245>



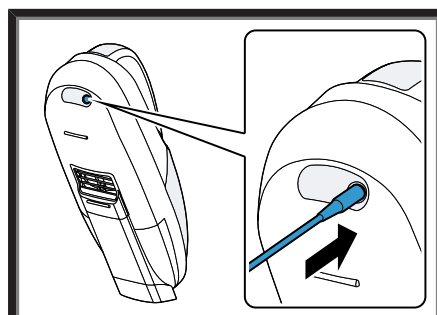
**[en]** Scan the QR code or visit the website to open the Further Notices for Use. You can find additional information about your appliance or accessory here.

---

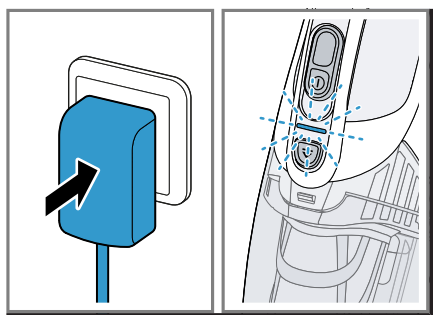
**[zh-tw]** 掃描 QR-Code 或訪問網站，以開啟更詳細的使用說明。您可於此處找到有關電器或配件的更多資訊。



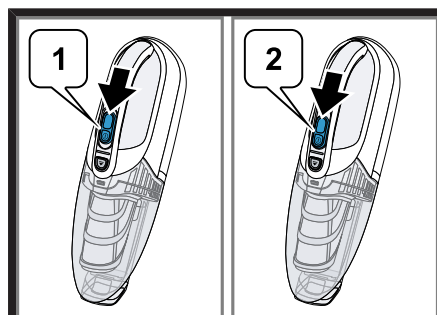
1



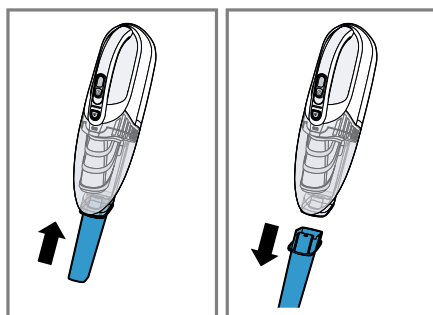
2



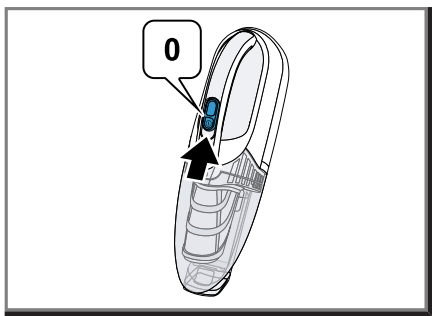
3



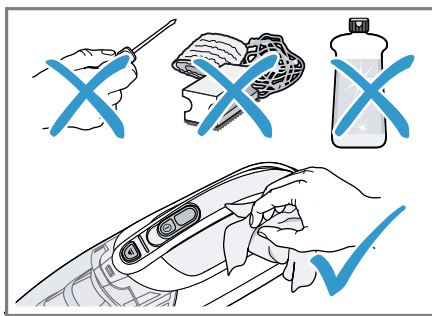
4



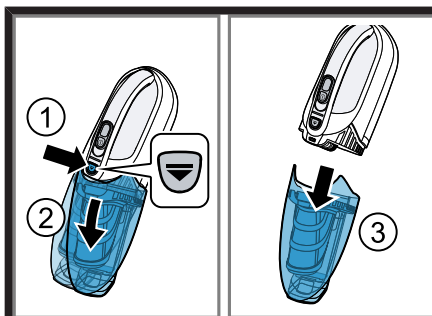
5



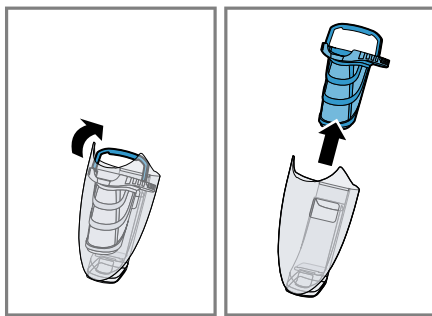
6



7



8



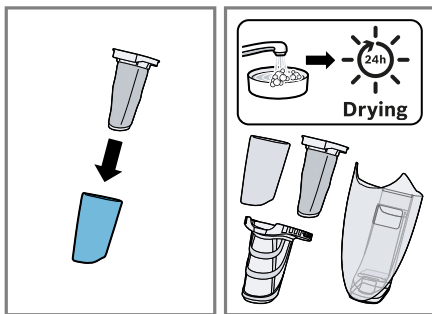
9



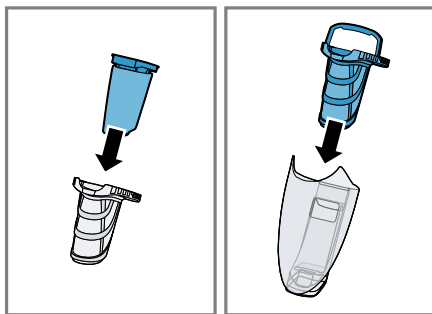
10



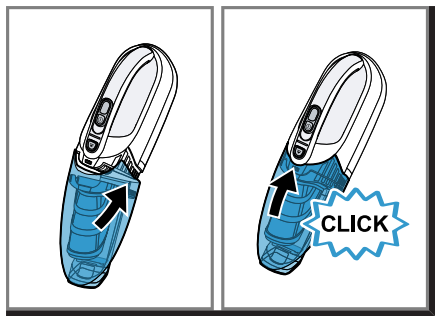
11



12



13





## Safety

- Read this instruction manual carefully.
- Keep the instruction manual and the product information safe for future reference or for the next owner.
- Do not connect the appliance if it has been damaged in transit.

Only use this appliance:

- with genuine parts and accessories. Damage caused by using third-party products is not covered under the warranty.
- for cleaning surfaces.
- in private households and in enclosed spaces in a domestic environment at room temperature.
- up to an altitude of max. 2000 m above sea level.

Do not use the appliance:

- for vacuum-cleaning persons or animals.
- for vacuuming up harmful, sharp-edged, hot or burning substances.
- for vacuuming up damp substances or liquids.
- for vacuuming up highly flammable or explosive materials and gases.
- for vacuuming up ash or soot from stoves and central heating systems.
- for vacuuming up toner dust from printers and photocopiers.
- for vacuuming up building rubble.

Disconnect the appliance from the power supply when:

- cleaning the appliance.

This appliance may be used by children aged 8 or over and by people who have reduced physical, sensory or mental abilities or inadequate experience and/or knowledge, provided that they are supervised or have been instructed on how to use the appliance safely and have understood the resulting dangers.

Do not let children play with the appliance.

Cleaning and user maintenance must not be performed by children unless they are being supervised.

- ▶ Repairs to the appliance should only be carried out by trained specialist staff.
- ▶ Only use genuine spare parts when repairing the appliance.
- ▶ Never operate a damaged appliance.

- ▶ Never operate an appliance with a cracked or fractured surface.
- ▶ Call customer service. → *Page 9*
- ▶ Only use the appliance in enclosed spaces.
- ▶ Never expose the appliance to intense heat or humidity.
- ▶ Do not use steam- or high-pressure cleaners to clean the appliance.
- ▶ Only connect and operate the power supply unit according to the data on the rating plate.
- ▶ Connect the power supply unit to a power supply with alternating current only via a properly installed socket with earthing.
- ▶ Do not apply flammable substances or substances containing alcohol to the filter.
- ▶ When cleaning the appliance, do not use flammable substances or substances that contain alcohol.
- ▶ Keep clothing, hair, fingers and other body parts away from the openings on the appliance and the moving parts.
- ▶ Never point the pipe or the nozzles towards eyes, hair, ears or mouths.
- ▶ When vacuuming stairs, ensure that there are no persons underneath the appliance.
- ▶ Keep packaging material away from children.
- ▶ Do not let children play with packaging material.
- ▶ Protect the battery against fire, heat and constant sunlight.
- ▶ Protect the battery against water and penetrating moisture.
- ▶ If fumes are escaping from a damaged battery, supply fresh air.
- ▶ If there are any problems, seek medical advice from a doctor.
- ▶ If liquids are escaping from a damaged battery and they come into contact with the skin, rinse immediately with water.
- ▶ If these come into contact with the eyes, seek medical help.

## **Preventing material damage**

- ▶ Check and clean any wet objects.
- ▶ Replace damaged objects.
- ▶ Never operate the appliance without the filter unit.

## **Familiarising yourself with your appliance**

### **Appliance**

You can find an overview of the parts of your appliance here.

→ *Fig. 1*

en    Operation

|    |  |
|----|--|
| 1  | Dust container                                     |
| 2  | Fluff filter                                       |
| 3  | Filter with foam filter                            |
| 4  | Motor unit   |
| 5  | Cordless vacuum sliding switch                     |
| 6  | Status display                                     |
| 7  | Dust container release button                      |
| 8  | Charging cable connection                          |
| 9  | Crevice nozzle                                     |
| 10 | Power supply unit with charging cable <sup>1</sup> |

<sup>1</sup> Depending on the appliance specifications

Status display

The status display indicates the different operating statuses.

| Operating status                   | Status display  |
|------------------------------------|---|
| Normal mode                        | Display lights up white.                                      |
| Battery charge below 20%           | Display slowly flashes white.                                 |
| Battery empty                      | Display goes out.   |
| Charging process                   | Display slowly flashes white.                                 |
| Battery is fully charged           | Display lights up white and goes out after approx. 2 minutes. |
| Over-/under-temperature protection | Display lights up red and goes out after approx. 10 seconds.  |

Power levels

You can set the suction power using the power levels.

| Level | Use   |
|-------|---|
| 1     | Vacuuming with normal power. For routine cleaning tasks.    |
| 2     | Vacuuming with maximum power. For demanding cleaning tasks. |

Battery runtimes

You can find information about battery runtimes here.

Notes

- The maximum battery runtimes differ depending on the selected power level and type of battery installed.
- Like every Li-ion battery, the batteries wear out over time, meaning that the battery capacity and the runtime decrease. This is a natural aging process and not the result of a material error, manufacturing error or material defect.
- You can delay the natural wear by using the following measures:
  - Only charge the appliance in the temperature range between 3 °C and 40 °C.
  - Only store the battery in the temperature range between 0 °C and 40 °C.
  - Do not store the battery for an extended period of time if it is fully charged or fully discharged.

Operation

Charging the battery

→ Fig. 2 - 3

**Note:** The power supply unit on the charging cable and the appliance heat up while charging. This is normal and harmless.

**Tip:** To check that the battery is full, briefly disconnect it from the mains and then reconnect it. The status display then lights up white.

Vacuuming with the cordless vacuum cleaner

→ Fig. 4 - 6

Cleaning and servicing

To keep your appliance working efficiently for a long time, it is important to clean and maintain it carefully.

Cleaning the appliance

**Requirement:** The appliance is switched off and the charging cable has been unplugged.



- ▶ Clean the appliance with a soft cloth and a commercially available plastic cleaner.  
→ Fig. 7

## Emptying the dust container and cleaning the filter unit

→ Fig. 8 - 14

**Note:** For thorough cleaning, pull the filter foam out of the filter. Clean the parts of the filter unit and the dust container under running water and leave them to dry for 24 hours.

## Troubleshooting

- ▶ Repairs to the appliance should only be carried out by trained specialist staff.
- ▶ Only use genuine spare parts when repairing the appliance.

### The appliance is not working.

The battery has not been charged.

- ▶ Charge the battery.  
→ "Charging the battery", Page 8

### Appliance is not working and the status display lights up red for 10 seconds.

Over-/under-temperature protection is activated.

1. Switch off the appliance and disconnect the appliance from the power supply.
2. Wait until the appliance has reached room temperature.

### The dust container cannot be inserted.

The filter unit or dust container is not positioned correctly.

- ▶ Check whether the filter unit and dust container are inserted correctly.

## Disposing of old appliance

- ▶ Dispose of the appliance in an environmentally friendly manner.  
Information about current disposal methods are available from your specialist dealer or local authority.



This appliance is labelled in accordance with European Directive 2012/19/EU concerning used electrical and electronic appliances (waste electrical and electronic equipment - WEEE). The guideline determines the framework for the return and recycling of used appliances as applicable throughout the EU.

## Disposing of batteries

Batteries should be recycled in an environmentally friendly manner. Do not dispose of the batteries in the household rubbish.

- ▶ Dispose of batteries in an environmentally friendly manner.



According to the European Guideline 2006/66/EC, defective or used battery packs/batteries, must be collected separately and disposed of in an environmentally correct manner.

## Customer Service

Detailed information on the warranty period and terms of warranty in your country is available from our after-sales service, your retailer or on our website.

The contact details for Customer Service can be found in the Customer Service directory at the end of the manual or on our website.

Please visit: <https://www.bosch-home.com.tw/specials/rohs> for Taiwan Restriction of the use of certain Hazardous Substances (RoHS) information.

## Warranty conditions

The guarantee conditions for this appliance are as defined by our representative in the country in which it is sold. Details regarding these conditions can be obtained from the dealer from whom the appliance was pur-

## **en** Customer Service

chased. The bill of sale or receipt must be produced when making any claim under the terms of this guarantee.



## 安全性

- 請仔細閱讀本說明書。
- 請妥善保管本說明書和產品資訊，以備日後查閱或提供給下一位使用者。
- 如本電器於運送途中受損，請勿連接。

本電器只能用於以下用途：

- 僅能搭配原廠零組件和附件使用。因使用其他產品造成損壞，不得主張保固。
- 用於清潔表面。
- 僅限私人家庭和室溫下的居家環境室內區域。
- 最高在海拔2000公尺以下。

請勿將本電器用於以下用途：

- 抽吸人類或動物。
- 抽吸有害健康、尖銳、高溫或灼熱的物質。
- 抽吸潮濕或液態的物質。
- 抽吸易燃或具爆炸特性的物質和氣體。
- 用於抽吸爐灶的煙灰、煤灰及中央暖氣設備。
- 抽吸印表機和複印機的碳粉塵。
- 抽吸建築碎料。

以下情況時，請將裝置與電源斷開：

- 清潔裝置。

凡年滿 8 歲的孩童和身體、感官或智力有缺陷之人士及缺乏相關經驗和／或知識之人士，應在負責安全使用機器人員的監督或指導下，瞭解使用機器可能帶來的危險後，方能使用本機。

孩童應受監護，以確保孩童不嬉玩電器。

孩童除非在監督下，否則不得進行清潔及保養的工作。

- ▶ 僅有合格的專業人員才可維修電器。
- ▶ 僅限使用原廠耗材來維修電器。
- ▶ 本電器受損時，請勿使用。
- ▶ 切勿操作表面有裂縫或破損的電器。
- ▶ 請聯絡客戶服務。→ 頁次13
- ▶ 本電器僅限於室內使用。
- ▶ 切勿將本電器置於高溫或潮濕處。
- ▶ 請勿使用蒸氣清潔機或高壓清潔機清潔本電器。
- ▶ 僅可按照規格銘板上的資訊連接和操作電源。
- ▶ 僅可透過正確安裝的接地插座將電源連接到交流電源。

- ▶ 不可將可燃性或含酒精的物品放置在過濾器上。
- ▶ 清潔本裝置時，請勿使用可燃性或含酒精的物質。
- ▶ 衣物、頭髮、手指和其他身體部位請遠離裝置開口和其活動零組件。
- ▶ 管子和吸頭請勿對準眼睛、頭髮、耳朵或嘴巴。
- ▶ 在樓梯進行吸塵時，請確認設備下方無人逗留。
- ▶ 請確保孩童遠離包材。
- ▶ 請勿讓孩童將包材當成玩具玩耍。
- ▶ 電池請勿靠近火源、高溫和長時間的陽光直射。
- ▶ 保護電池，避免水和濕氣進入。
- ▶ 如果受損的電池冒出煙霧，請引入新鮮空氣。
- ▶ 若感到不適，請立即就醫。
- ▶ 若受損的電池漏液接觸到皮膚，請立即用水沖洗。
- ▶ 若接觸到眼睛，請尋求額外的醫療幫助。

避免財務損失

- ▶ 請檢查和清潔因電池流出之液體而潮濕的物品。
- ▶ 物品若受損，請進行更換。
- ▶ 必須裝入過濾單元，才能使用本裝置。

深入瞭解

裝置

可在此查看電器的相關組件一覽。

→ 圖 1

|    |                        |
|----|------------------------|
| 1  | 集塵盒                    |
| 2  | 棉絮濾網                   |
| 3  | 帶有過濾泡棉的過濾器             |
| 4  | 電機單元                   |
| 5  | 無線吸塵器滑動開關              |
| 6  | 狀態指示燈                  |
| 7  | 集塵盒釋放按鈕                |
| 8  | 充電線連接                  |
| 9  | 縫隙吸頭                   |
| 10 | 帶有充電線 <sup>1</sup> 的電源 |

<sup>1</sup> 依電器的配備而定

狀態指示燈

狀態指示燈會顯示不同的運作狀態。

| 運作狀態        | 狀態指示燈                |
|-------------|----------------------|
| 正常模式        | 指示燈亮白燈。              |
| 電池電量低於 20 % | 指示燈緩慢閃白燈。            |
| 電池沒電        | 指示燈熄滅。               |
| 充電程序        | 指示燈緩慢閃白燈。            |
| 電池已充飽電      | 指示燈亮白燈，且於約 2 分鐘後熄滅。  |
| 過熱 / 低溫保護   | 指示燈亮紅燈，且於約 10 秒鐘後熄滅。 |

出力

您可以使用功率等級來調整吸力。

| 等級 | 用途                    |
|----|-----------------------|
| 1  | 以一般功率吸塵。適用於日常清潔任務。    |
| 2  | 以最高功率吸塵。適用於要求嚴格的清潔任務。 |

電池使用時間

在這裡您可以找到有關電池壽命的資訊。

## 注意事項

- 電池最長壽命取決於所選功率等級和安裝的電池類型。
- 如同所有鋰離子電池一樣，電池會隨著時間耗損，導致電池容量和使用時間逐漸衰減。這是一種自然的老化程序，並非材料瑕疵、製造瑕疵或材料缺失導致的後果。
- 採取以下措施可延緩電池的自然損耗：
  - 僅可在溫度介於3 °C至40 °C的溫度範圍內為電器充電。
  - 電器只能存放在0 °C至40 °C的溫度範圍內。
  - 充滿電或完全放電的電器請勿長時間存放。

## 操作

### 電池充電

#### → 圖 2 - 3

**注意事項：**充電器的電源和吸塵器在充電時會變熱。這是正常現象，無須擔心。

**提示：**若要檢查是否已充滿電，請短暫斷開設備與電源的連接然後再重新連接。讓狀態指示燈亮白燈。

### 使用無線吸塵器吸塵

#### → 圖 4 - 6

## 清潔和保養

為了讓電器長時間保持功能順暢，請仔細進行清潔和保養。

### 清潔電器

**要求：**電器已關閉並與充電線斷開連接。

- ▶ 使用軟布和市售塑料清潔劑清潔電器。

#### → 圖 7

### 清空集塵盒並清潔過濾裝置

#### → 圖 8 - 14

**注意事項：**如需徹底清潔，請將過濾泡棉從過濾器中拉出。用流水清洗過濾裝置的零件和集塵盒，並乾燥24小時。

## 排除故障

- ▶ 僅有合格的专业人員才可維修電器。
- ▶ 僅限使用原廠耗材來維修電器。

## 本電器無法運作。

### 電池未充電。

- ▶ 為電池充電。  
→ 「電池充電」，頁次13

### 電器未運作，狀態指示燈會亮起紅燈10秒。

#### 過溫 / 欠溫保護已啟用。

1. 關閉裝置，並斷開裝置的電源供應。
2. 等待裝置恢復室溫。

### 集塵盒無法裝入。

#### 過濾單元或集塵盒安裝不正確。

- ▶ 檢查過濾單元和集塵盒是否正確安裝。

## 舊電器處理

- ▶ 請以環保的方式進行本電器的廢棄處理。關於現行廢棄物處理的相關資訊，請向經銷商及當地或市政管理單位查詢。



本機已根據歐盟法令 2012/19/EU 關於電氣和電子設備之規定（報廢電子電氣設備，WEEE）進行了標記。  
該法令是在全歐盟範圍內有關廢棄設備回收處理和再生利用的有效法律依據。

## 電池 / 電瓶廢棄處理

電池 / 電瓶應以符合環保的回收方式處理。  
電池 / 電瓶不得棄置於家用垃圾。

- ▶ 電池 / 電瓶應以符合環保進行廢棄處理。



根據歐盟指令2006/66/EC，故障或使用過的電池組 / 電池必須分別回收並以符合環境友善的方式棄置。

## 客戶服務

有關您所在國家的保固期和保固條款的詳細資訊，請向本公司的客戶服務、您的經銷商或本公司網站查詢。

請在本說明書的最後一頁或前往本公司的網站查看客戶服務的聯絡資訊。  
台灣RoHS限用物質含有情況標示資訊請參考網址：<https://www.bosch-home.com.tw/specials/rohs>

## 保固條件

本電器的保修條款由銷售所在國家的代表機構來制定。填寫並寄回隨電器附帶的保卡紙本或至下方官網登錄註冊商品，即可享有2年保固，保固條件請參照本公司公開資訊。  
[www.bosch-home.com.tw/mybosch](http://www.bosch-home.com.tw/mybosch)

## Service world-wide

### Central Service Contacts

#### AU Australia

BSH Home Appliances Pty. Ltd.  
Gate 1, 1555 Centre Road  
Clayton, Victoria 3168  
Tel.: +61 1300 369 744\*  
mailto:customersupport.au@bshg.com  
www.bosch-home.com.au  
\*Mon-Fri 24 hours

#### CN China, 中國

BSH Home Appliances Service Jiangsu  
Co. Ltd.  
Building 3, No. 18 Qingjiang South Road,  
Gulou District  
Nanjing, Jiangsu Province  
Service Tel.: 400 8855 888\*  
mailto:careline.china@bshg.com  
www.bosch-home.cn  
\*phone rate depends on the network used

#### GB Great Britain

BSH Home Appliances Ltd.  
Grand Union House, Old Wolverton Road,  
Wolverton  
Milton Keynes MK12 5PT  
To arrange an engineer visit, to order  
spare parts and accessories or for  
product advice please visit [www.bosch-home.co.uk](http://www.bosch-home.co.uk) Or call Tel.: +44 344 892  
8979\*  
\*Calls are charged at the basic rate,  
please check with your telephone service  
provider for exact charges.

#### HK Hong Kong, 香港

BSH Home Appliances Limited  
香港新界荃灣青山公路388號中染  
大廈23樓07室 Unit 07, 23/F, CDW  
Building, 388 Castle Peak Road  
Tsuen Wan, New Territories, Hong Kong  
Tel.: +852 2626 9655 (HK)  
Toll free 0800 863 (Macao)  
mailto:bosch.hk.service@bshg.com  
www.bosch-home.com.hk

#### IE Republic of Ireland

BSH Home Appliances Ltd.  
M50 Business Park, Ballymount Road Up-  
per, Walkinstown  
Dublin 12  
To arrange an engineer visit, to order  
spare parts and accessories or for  
product advice please call Tel.: +353  
1450 2655\*  
www.bosch-home.ie  
\*Calls are charged at the basic rate,  
please check with your telephone service  
provider for exact charges

#### MT Malta, Repubblika ta' Malta

Oxford House Ltd.  
Triq L-Imdina, Zone 2  
Birkirkara CBD 2010  
Tel.: +356 25 464 000  
mailto:info@oxfordhouse.com.mt  
mailto:service@oxfordhouse.com.mt  
www.oxfordhouse.com.mt

#### MV Raajjeyge Jumhooriyyaa, Maldives

Evo Home  
H. Vaaly Villa, Majeedhee Magu  
20042 Malé  
Tel.: +960 334 18 19  
mailto:info@evohome.mv  
mailto:sales@evohome.mv  
www.evo.mv

#### NZ New Zealand

BSH Home Appliances Ltd.  
Level 3, Air NZ Building, Smales Farm  
Business Park, 74 Taharoto Road, Taka-  
puna  
Auckland 0622  
Toll free: 0800 245 700\*  
mailto:aftersales.nz@bshg.com  
www.bosch-home.co.nz  
\*Mon-Fri 8.30am to 5pm (exclude public  
holidays)

#### PK Pakistan پاکستان

GULABZAI Group  
20-L, Near Emporium Mall, Johar Town  
Lahore  
Tel.: +92 300 0308 046 Ext: 102  
mailto:customer.care@gulabzai.com.pk

#### SG Singapore, 新加坡

BSH Home Appliances Pte. Ltd.  
38C Jalan Pemimpin, #01-01  
Singapore 577180  
Tel.: +65 6751 5000\*  
mailto:bshsgp.service@bshg.com  
www.bosch-home.com.sg  
\*Mon-Fri 9am to 6pm, Sat: 9am to 1pm  
(exclude public holidays)

#### TW Taiwan, 台灣

我們期盼您不斷的鼓勵與指導，  
任何諮詢或服務需求，歡迎洽詢  
客服專線  
BSH Home Appliances Private Limited  
台北市內湖區洲子街80號11樓  
11F., No.80, Zhouzi St., Neihu Dist.  
Taipei City 11493  
Toll free: 0800 368 888  
mailto:bshtzn-service@bshg.com  
www.bosch-home.com.tw

#### ZA South Africa

BSH Home Appliances (Pty) Ltd.  
96 Fifteenth Road, Randjespark  
1685 Midrand - Johannesburg  
Tel.: +27 86 002 6724  
mailto:bsh@open.co.za  
mailto:applianceserviceza@bshg.com  
www.bosch-home.com/za



## Thank you for buying a Bosch Home Appliance!

Register your new device on MyBosch now and profit directly from:

- **Expert tips & tricks for your appliance**
- **Warranty extension options**
- **Discounts for accessories & spare-parts**
- **Digital manual and all appliance data at hand**
- **Easy access to Bosch Home Appliances Service**

Free and easy registration – also on mobile phones:

**[www.bosch-home.com/welcome](http://www.bosch-home.com/welcome)**

**BOSCH**  
HOME APPLIANCES  
**SERVICE**

## Looking for help? You'll find it here.

Expert advice for your Bosch home appliances, help with problems or a repair from Bosch experts.

Find out everything about the many ways Bosch can support you:

**[www.bosch-home.com/service](http://www.bosch-home.com/service)**

Contact data of all countries are listed in the attached service directory.

**BSH Hausgeräte GmbH**

Carl-Wery-Straße 34

81739 München

GERMANY

[www.bosch-home.com](http://www.bosch-home.com)

博西家用電器股份有限公司

台北市內湖區洲子街80號11樓

0800-368-888

[www.bosch-home.com.tw](http://www.bosch-home.com.tw)



**8001296078** (040105)

en, zh-tw