



2025 SCOTT PATRON/PATRON ST MANUAL

CONTENT

THE PATRON / PATRON ST SHOULD BE ADJUSTED EXACTLY TO THE RIDER FOR MAXIMUM SAFETY AND RIDEABILITY.

Please contact your authorized SCOTT dealer for advice in order to avoid technical problems or any harm.

GEOMETRY & TECHNICAL DATA	03
HEADSET ADJUSTMENT	05
BATTERY INSTALLATION	06
MOTOR INSTALLATION	09
SHOCK AND SHOCK COVER	10
BOSCH POWERMORE	11
CABLE ROUTING	12
GENERAL SPARE PARTS	18
MANUFACTURE'S GUARANTEE	21

LEGEND



TORQUE REQUIRED



TASK DIFFICULTY



TORX TOOL SIZE



HEX TOOL SIZE



TORQUE AMOUNT



GREASE REQUIRED



NO GREASE



CARBON GREASE

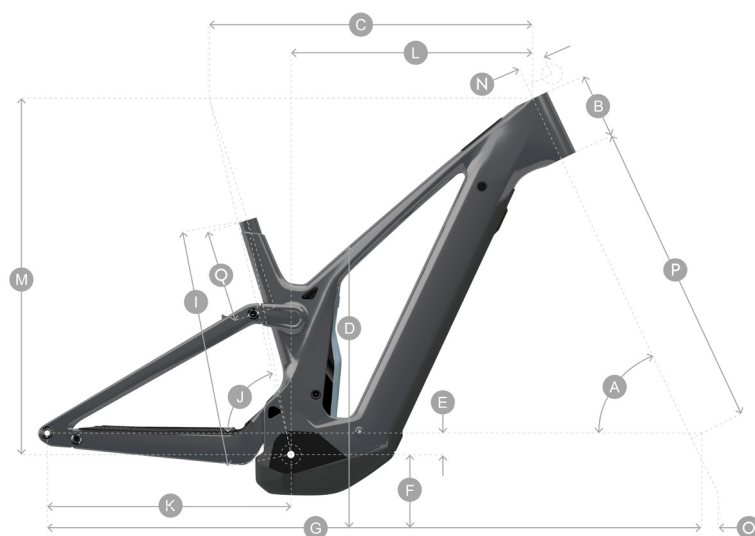


THREADLOC



BEARING FIT

GEOMETRY & TECHNICAL DATA



SEATPOST	mm	31.6	HARDWARE M.FRAME	mm	Trunnion
SEATPOST CLAMP	mm	34.9	HARDWARE LINKAGE	mm	8 x 20
TRAVEL	mm	150	MAX TYRE WIDTH	in	2.6
SHOCK LENGTH	mm	185	CHAINLINE	mm	55
SHOCK STROKE	mm	55	MAX CHAINRING	Tooth	36
REAR AXLE	mm	12 x 148	MAX ROTOR	mm	200 Rr 200 Fr
HEADSET	mm	O52/142 - O52/140	BOSCH CONNECT MODULE	not compatible	

2025 PATRON			SM	MED	LG	XL	SM ST	MED ST	LG ST	XL ST
A	Head tube angle	°	65.8	65.8	65.8	65.8	64.9	64.9	64.9	64.9
B	Head tube length	mm	120	125	135	145	120	125	135	145
C	Top tube horizontal	mm	579.3	605.5	626.6	657	582.4	607.9	629.7	660.2
D	standover height	mm	719	719	729	732	719	719	729	732
E	BB offset	mm	-36.2	-36.1	-35.9	-35.8	-28.4	-28.4	-28.4	-28.5
F	BB height	mm	340.8	340.9	341.1	341.2	348.6	348.6	348.6	348.5
G	Wheelbase	mm	1212.8	1234.9	1264.7	1298.4	1222.3	1244.5	1274.2	1308
I	BB center to TST	mm	405	435	470	500	405	435	470	500
J	Seat angle	°	77.4	77.2	77.2	77.2	76.4	76.3	76.3	76.3
K	Chainstay	mm	453.5	453.5	453.5	453.5	454	454	454	454
L	Reach	mm	439.4	459.3	484.7	514.2	428.3	448.3	473.9	503.4
M	Stack	mm	643	647.4	656.3	665.1	650.5	655	664.2	673.3
	Fork Length	mm	561	561	561	561	584	584	584	584
	Trail	mm	120.5	120.6	120.8	120.9	127.9	127.9	127.9	127.9

PATRON

GEOMETRY & TECHNICAL DATA CONT.



There is a stop inside the seat tube to avoid damaging the frame internals.

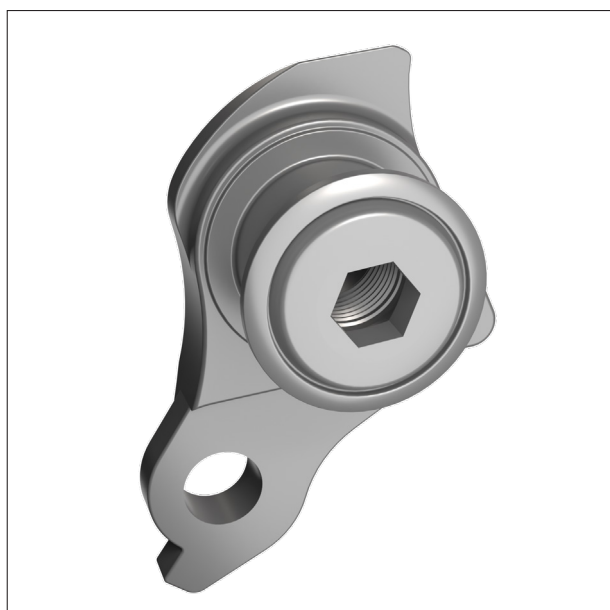
MAX INSERTION (MM):

SMALL: 205

MEDIUM: 232

LARGE: 267

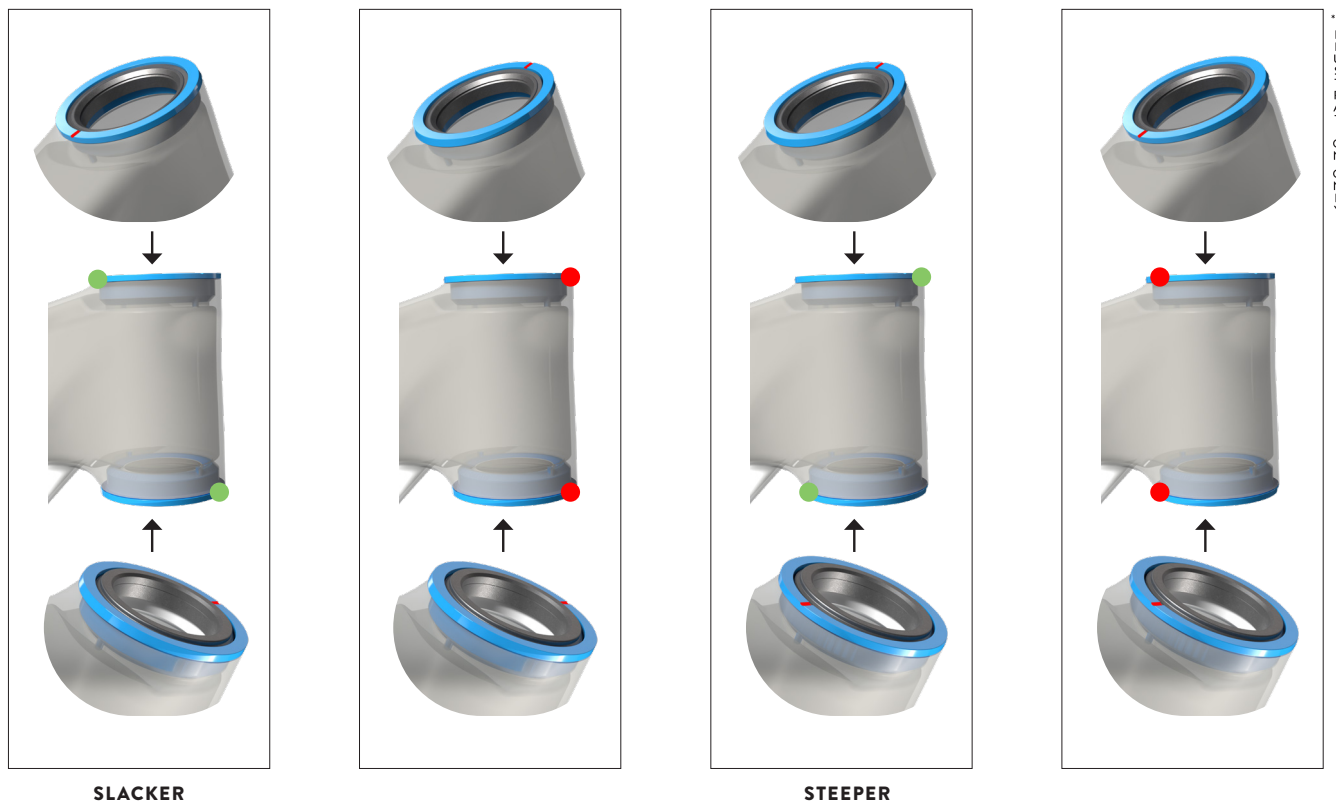
XL: 298



All Patron bikes will use the UDH hanger.

PATRON

HEADSET ADJUSTMENT



It is important to install the headset correctly depending on the setup required. Make sure the angle indication markers are set opposite each other. Bikes will be delivered with 0,6° cups installed.

CUP SIZE (MM): SMALL: 120, MEDIUM: 125, LARGE: 135 XL: 135

288251 SYN HEADSET ZS56/28.6 - ZS56/40 MTB

290060 SCO HEADSET CUP KIT SPARK 22

DO NOT USE A STANDARD HEADSET TOOL!

PATRON

BATTERY INSTALLATION

BATTERY FIXATION MUST ONLY BE CARRIED OUT BY A SCOTT AUTHORISED DEALER USING THE CORRECT GAUGE AND TOOLING !

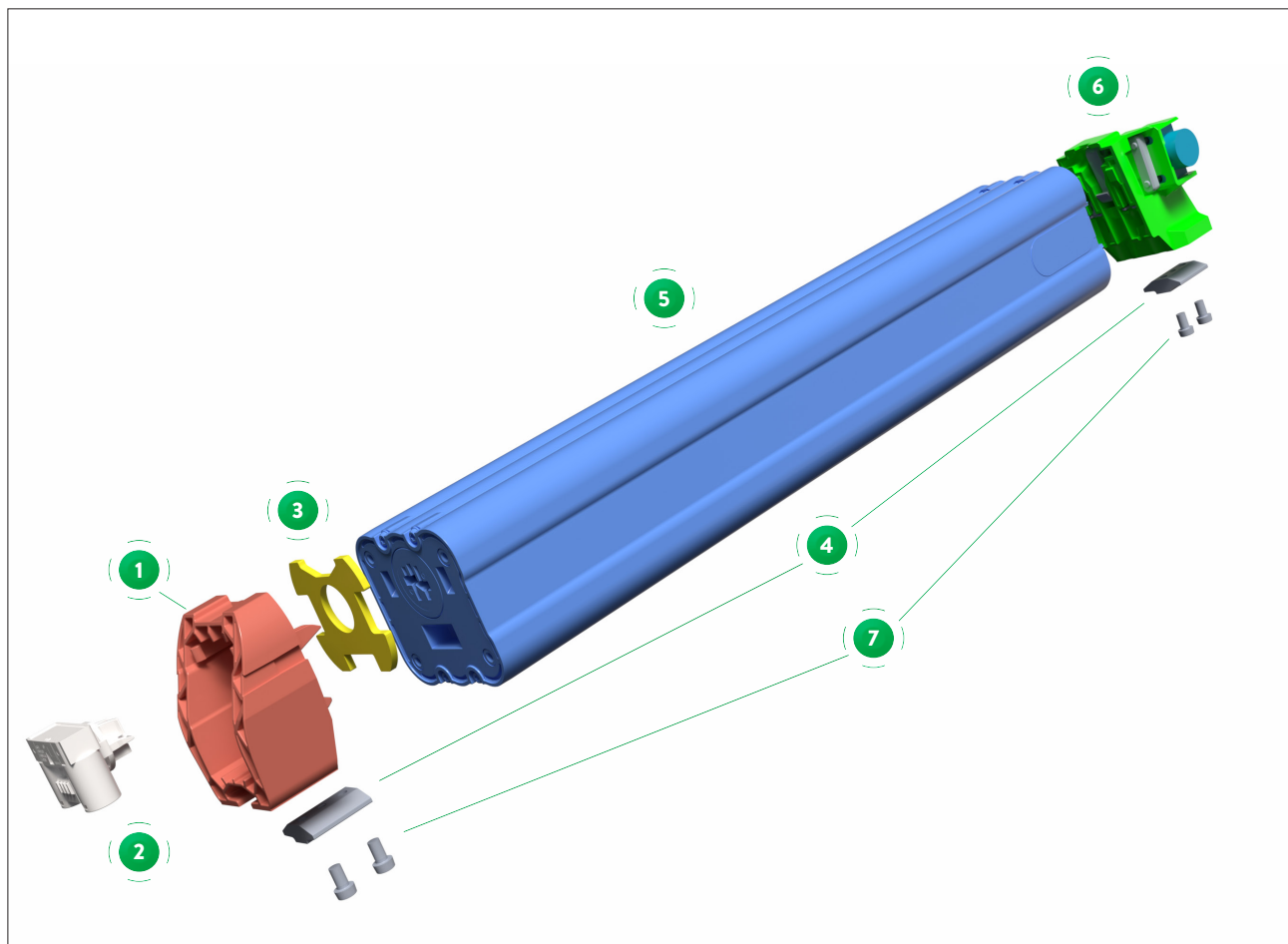
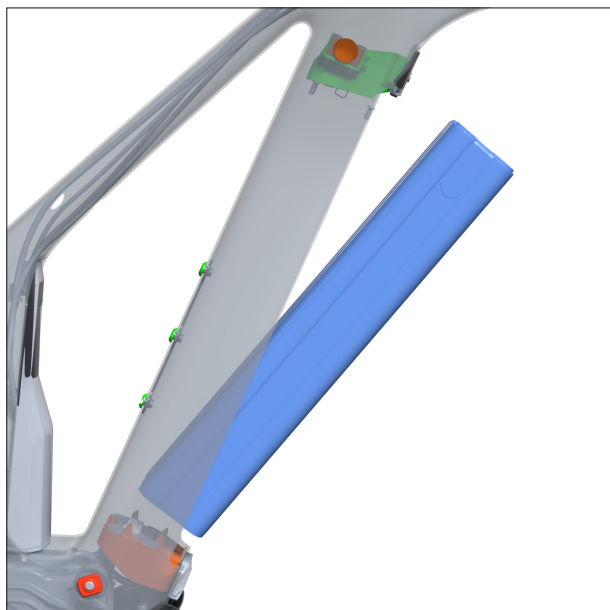


ILLUSTRATION ONLY

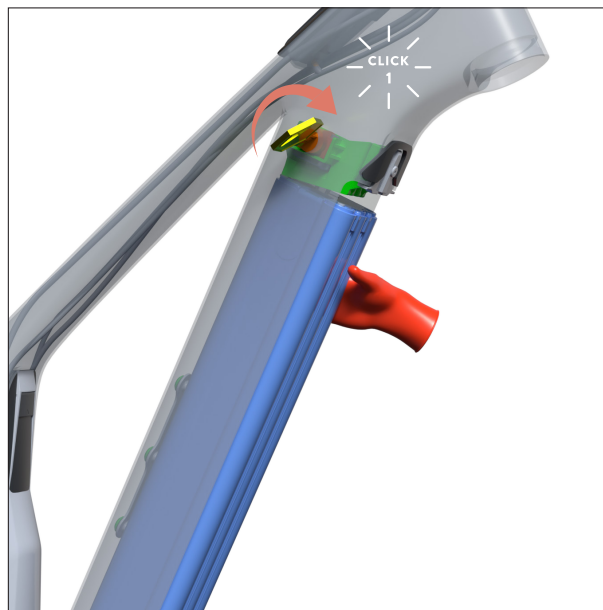
ITEM	QTY	DESCRIPTION	BOSCH ITEM	SCOTT
1	1	Battery Cradle Inverted	EN12.200.0U0	424333 SCO eRIDE Bosch Battery mount Option 8
2	1	Battery Adapter 2	EB12.100.015	294641 SCO eRIDE Bosch Battery Adapter 2 22
3	1	Battery Damper Foil Patron Plug	EB12.200.0LK	424341 SCO eRIDE Bosch Foam damper 25
4	2	Battery Clamping Plate Patron 25 (Screws Not Included)	N/A	424336 SCO eRIDE Batt Clamping plate 25
5	1	Battery Powertube Horizontal 800Wh	EB12.100.050	424338 SCO eRIDE Bosch Powertube 800 H 25
6	6	Battery PT800 Locking Assembly Inverted	EB12.100.050	424334 SCO eRIDE Bosch Lock Assembly Patron 25
7	4	Battery Screw For Holder M5x9	EB12.100.01Y	424337 SCO eRIDE Bosch screw for Batt plate 25

PATRON

BATTERY INSTALLATION CONT.



01 Insert the battery, bottom end first.



02 Turn and hold the key and press in the battery, you will hear the first click.



03 Let go of the key, then push the battery one more time. You will hear a second click to secure.



04 Place the bottom part of the battery cover into position.



ILLUSTRATION ONLY

PATRON

BATTERY INSTALLATION CONT.

**05**

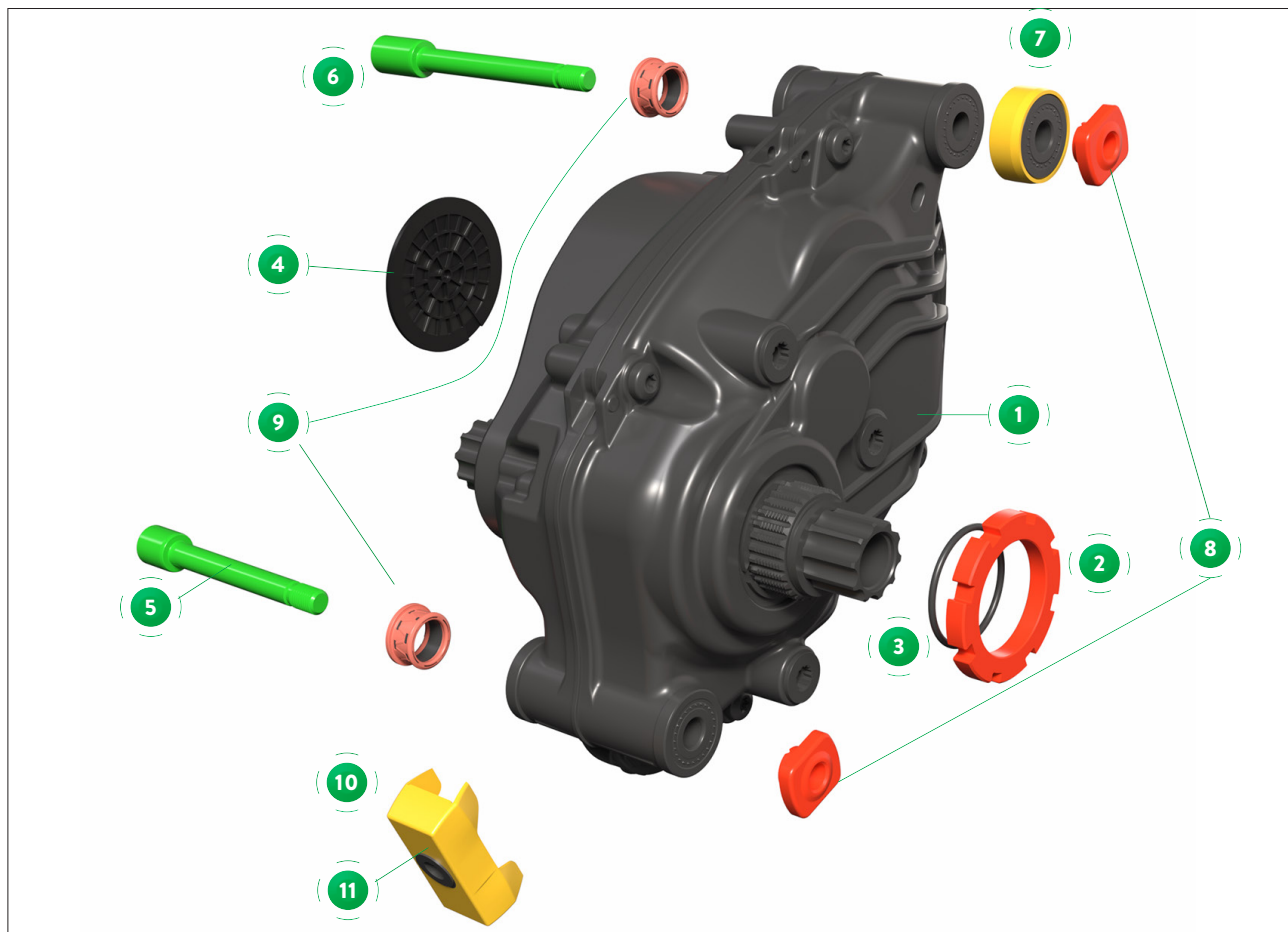
Lift up the lock tab, then press the cover into place. You will hear a click when engaged fully.



PATRON

MOTOR INSTALLATION

MOTOR FIXATION MUST ONLY BE CARRIED OUT BY A SCOTT AUTHORISED DEALER USING THE CORRECT TOOLING !



ITEM	QTY	DESCRIPTION	BOSCH ITEM
1	1	Drive Unit CX BDU38YY	EB11.100.01C
2	1	DU BDU38YY Lockring	EB11.200.0JH
3	1	O-Ring	1270016119
4	1	Drive Unit Bezel	EB11.200.0KD
5	1	Front Motor Bolt Wide	EB11.200.0T1
6	1	Rear Motor Bolt	EB11.200.12M
7	2	Motor Wide adapter	EB11.200.12H
8	2	Motor Assembly Nut	EB11.200.03C
9	2	Motor Bolt Sleeve	EB11.200.0GK
10	1	Rim Magnet	EB11.200.015
11	1	Rim Magnet Adapter	EB11.200.025

PATRON

SHOCK AND SHOCK COVERS

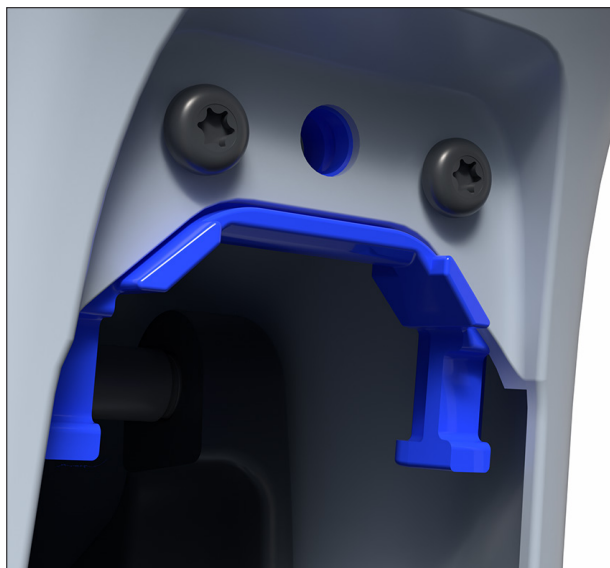


Scott Nude 6 rear shock cover is latched at the top and magnetic at the base, it will cover the complete shock.



ILLUSTRATION ONLY

Piggyback rear shock cover only covers half the opening, with a small base plate. Both parts have a screw fixation.



Both rear shock covers will use the upper shock cover bracket. This also doubles as a cable guide for all cable apart from Bosch components wires.

NO COIL SHOCKS PERMITTED !

PATRON

BOSCH POWERMORE



Patron's are Bosch PowerMore ready, no configuration update is required. You will need the follow Bosch parts:

BOSCH POWERMORE HOLDER: EB12.110.01Q

BOSCH POWERMORE CABLE 250mm: EB12.120.08J

PATRON

CABLE ROUTING

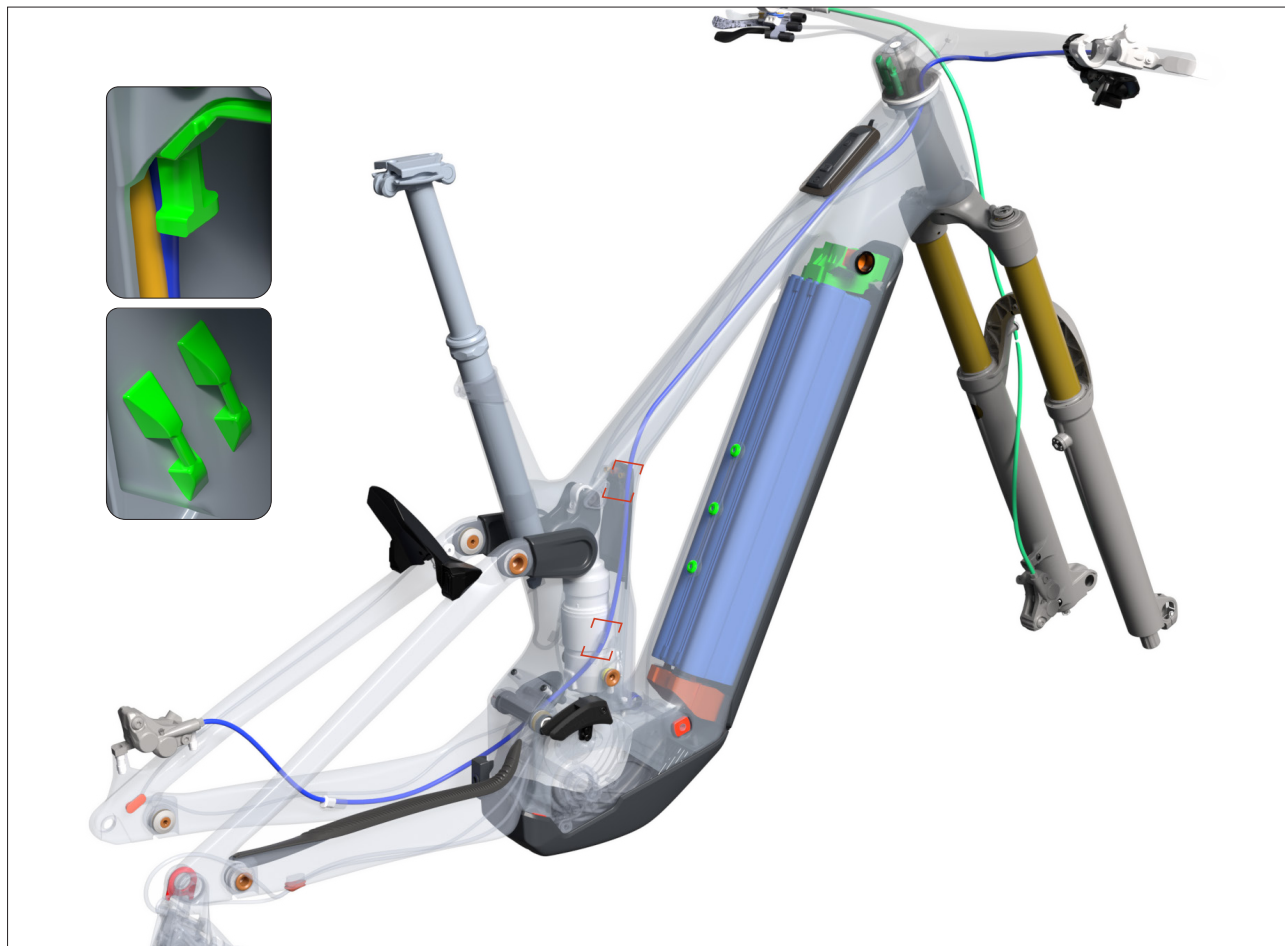


CABLE ROUTING OVERVIEW

FOR BOSCH COMPONENT CONNECTIONS PLEASE CONSULT YOUR AUTHORISED SCOTT SPORTS DEALER!

PATRON

CABLE ROUTING CONT.



REAR BRAKE CABLE ROUTING

Guide from the brake calliper to brake lever, enter mid point in the chainstay, exit front of the chainstay, then enter the main frame.

Cross behind the shock on the drive side, through the seat tube on the drive side.

Zip tie to the frame cable holder, then zip tie to the shock cover plate.

Along the inside of the top tube and exit on the right side of the head tube.

PATRON

CABLE ROUTING CONT.



REAR SHOCK CABLE ROUTING

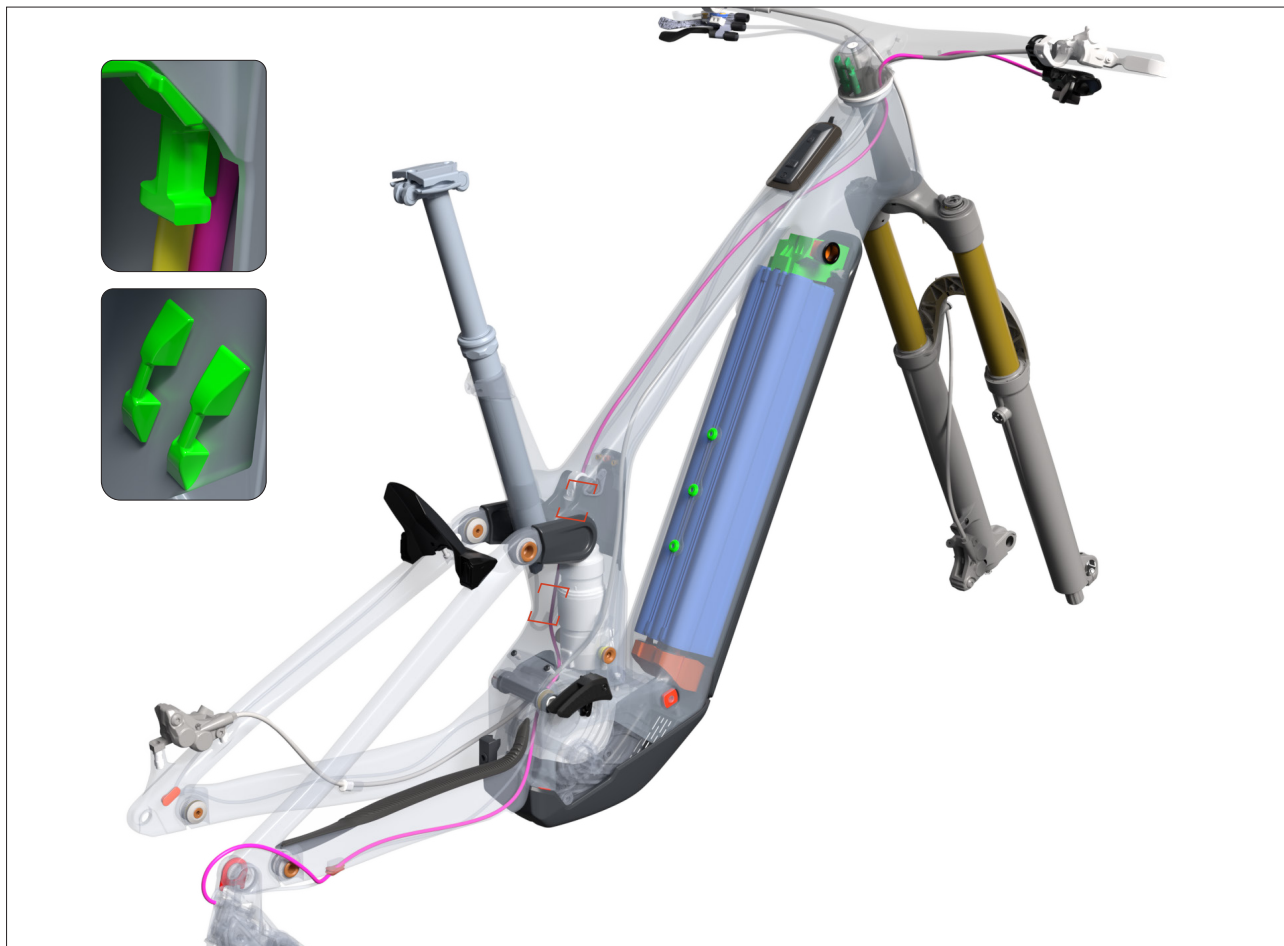
Guide from the handlebar lever to the shock.

Enter the headtube on the left side, and along the inside of the top tube.

Zip tie to the shock cover plate on the drive side.

PATRON

CABLE ROUTING CONT.



REAR DERAILLEUR CABLE ROUTING

Guide from the shifter to the rear derailleur.

Enter the headtube on the right side and along the inside of the top tube.

First attach to the left side of the shock cover plate, then again to the left side frame cable holder.

Cross over behind the rear shock and enter the chainstay on the right side.

PATRON

CABLE ROUTING CONT.



DROPPER SEATPOST CABLE ROUTING

Guide from dropper lever to the post, enter at the head tube on the left side and along the inside of the top tube.

Install a protective tube to the dropper cable.

Then first zip tie the protective tube to the shock cover bracket left side of the shock cover **(1)**, then again to the left side frame cable holder **(2)**.

Guide the cable housing through the protection tube and loop it up to the dropper cable interface. Cable loop should be long enough to allow dropper height adjustment.

PATRON

CABLE ROUTING

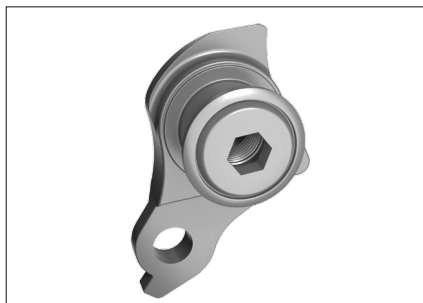


REAR LIGHT CABLE ROUTING

Guide from the motor to the light. The cable must go above the chainstay / seatstay pivot, and enter the main frame via the main cable guide.

PATRON

GENERAL SPARE PARTS (illustration only)



286000 SCO DROPOUT SRAM UDH 21



Reverse Thread



290016 SCO AXLE RWS REAR 148X12 SPARK PLUG 22



297749 SCO eRIDE BOSCH RIM SPEED SENSOR 22



424177 SCO eRIDE MOTOR COVER OPTION 7 PATRON 25



424174 SCO eRIDE SHOCK COVER PATRON 25



PATRON

GENERAL SPARE PARTS (illustration only)



424175 SCO eRIDE SHOCK COVER PB PATRON 25



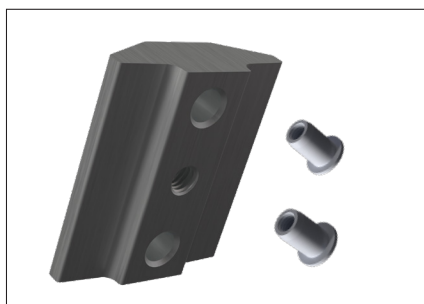
425428 SCO eRIDE BAT COVER PATRON 25



424169 SCO eRIDE CHARGE PORT ASSEMBLY SPIN 25



424183 SCO eRIDE TT REMOTE ADAPT PATRON CARB 25



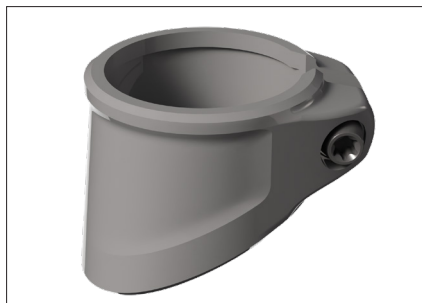
424336 SCO eRIDE BATT CLAMPING PLATE 25

424337 SCO eRIDE BOSCH SCREW FOR BATT PLATE 25

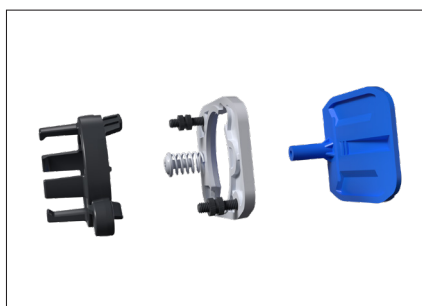


PATRON

GENERAL SPARE PARTS (illustration only)



424392 SCO eRIDE SEATPOST CLAMP PATRON CB 25



424169 SCO eRIDE CHARGE PORT ASSEMBLY SPIN 25



424541 SCO eRIDE DT CABLE HOLDER PATRON 25
(for Bosch wires only)

MANUFACTURER'S GUARANTEE,

When purchasing a new SCOTT bicycle from an authorized SCOTT dealer, SCOTT grants a manufacturer's guarantee subject to the following provisions.

CONDITIONS

The manufacturer's guarantee is only granted to the first-time buyer of a SCOTT bicycle who has purchased it from an authorized SCOTT dealer. The manufacturer's guarantee only applies if the bicycle is registered to the first buyer at www.scott-sports.com within ten days of purchase.

DURATION

The manufacturer's guarantee is granted from the date of purchase for a period of five years on bicycle frames and rear ends. The guarantee period is reduced to three years, if the SCOTT bicycle is not serviced at least once a year by an authorized SCOTT dealer. Maintenance services must be carried out in accordance with the maintenance instructions in the SCOTT manual and must be confirmed there by the stamp and signature of the authorized SCOTT dealer.

For frames and rear ends of Category 5 bicycle models and for rigid forks manufactured by SCOTT, the duration of the manufacturer's guarantee is limited to two years.

If a defect on the SCOTT bicycle is remedied within the scope of a manufacturer's guarantee or a warranty claim, the duration of the manufacturer's guarantee is not extended. The manufacturer's guarantee ends, when the first-time buyer transfers ownership of the SCOTT bicycle to a third person.

ASSERTION

The manufacturer's guarantee is provided by SCOTT Sports SA, Route du Crochet 11, 1762 Givisiez, Switzerland. The buyer must inspect the SCOTT bicycle immediately after purchase and notify his authorized SCOTT dealer at once in writing of any obvious defects. Hidden defects must be reported immediately after their discovery. In the event of a guarantee claim, the SCOTT bicycle must be handed over to an authorized SCOTT dealer. The latter will contact SCOTT to remedy the defect. The assertion of a guarantee claim always requires the presentation of the original proof of purchase as well as the proof of maintenance service in the SCOTT manual.

Performance of SCOTT in the event of a guarantee claim

In the event of a guarantee claim, SCOTT will, at its own discretion, repair the defect or replace the defective product with a product of similar quality, whereby colour and model deviations are possible. If a repair or replacement is not possible, a purchase price refund will be made taking into account previous use. SCOTT is entitled to commission third parties to remedy the defect.

LIMITATIONS

The manufacturer's guarantee applies exclusively to frames, swingarms and rigid forks of SCOTT bicycles. Bicycle components are excluded from this manufacturer's guarantee.

The manufacturer's guarantee does not apply to normal wear and tear, damage caused by accidents or other excessive force on the SCOTT bicycle, corrosion, improper maintenance, incorrect assembly and assembly of unsuitable components or accessories as well as cosmetic defects, for example in the varnish.

The manufacturer's guarantee does not apply to SCOTT bicycles that have been used in a rental shop.

MISCELLANEOUS

These manufacturer's guarantee provisions apply to all SCOTT bicycles as of model year 2023. Statutory warranty rights of the buyer and guarantees of component manufacturers (Shimano, SRAM etc.) remain unaffected by this manufacturer's guarantee. The place of jurisdiction for all disputes in connection with this manufacturer's guarantee is Freiburg, Switzerland. This manufacturer's guarantee is subject to Swiss law to the exclusion of all legislation that refers to foreign law.

BIKE WARRANTY PERIODS					
	Year 1	Year 2	Year 3	Year 4	Year 5
SCOTT Bikes					
Category 5 Bikes					
Regular Warranty Period					
Option for prolongation according to maintenance intervals shown in manual attached to bikes					



All rights reserved
© 2024 SCOTT Sports SA

Distribution:
SSG (Europe) Distribution Center SA
P.E.D. Zone C1
Rue du Kiell 60
6790 Aubange
Belgium

SCOTT Sports SA
Route du Crochet 11
1762 Givisiez
Switzerland

webmaster.marketing@scott-sports.com
www.scott-sports.com

