

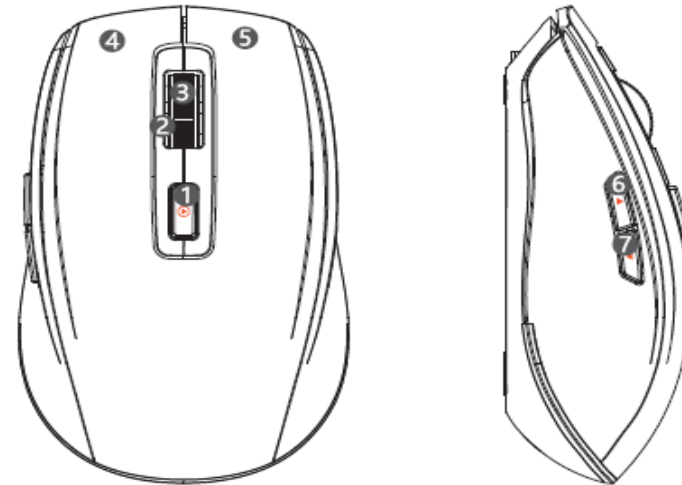
TMICE

TKM01A

Dido Multi-functional Bluetooth Mouse User Manual

Enjoy the fun on the table

1 Product Overview



① Play/Pause Button

② Power Indicator

③ Scroll Wheel

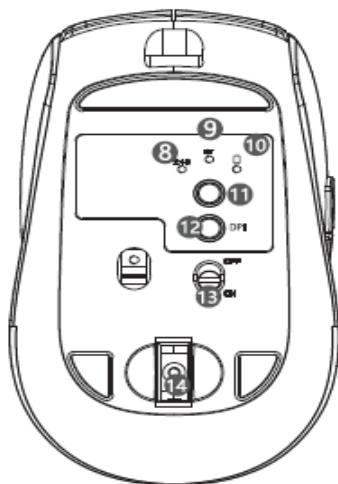
④ Left Button

⑤ Right Button

⑥ Backward Button

⑦ Forward Button

1 Product Overview



8 2.4G Indicator

12 DPI

9 Bluetooth Indicator (PC)

13 Power Switch

10 Bluetooth Indicator (Phone)

14 2.4G Receiver

11 Mode

TMICE



Connection guide for PC



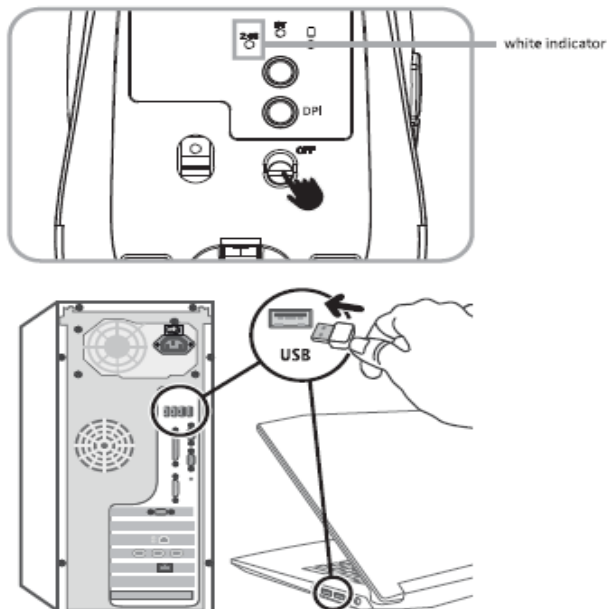
Switching between modes

After the boot connection is successful,
switch the usage mode of BT1/BT2/2.4G according
to the button shown

2 Connection guide for PC

1. Connected with 2.4G

1.1 Take out the receiver from the base and insert it into the PC USB interface. Turn the power switch to ON. The Connection is completed when the 2.4G white indicator turns off after keeping on for a while.

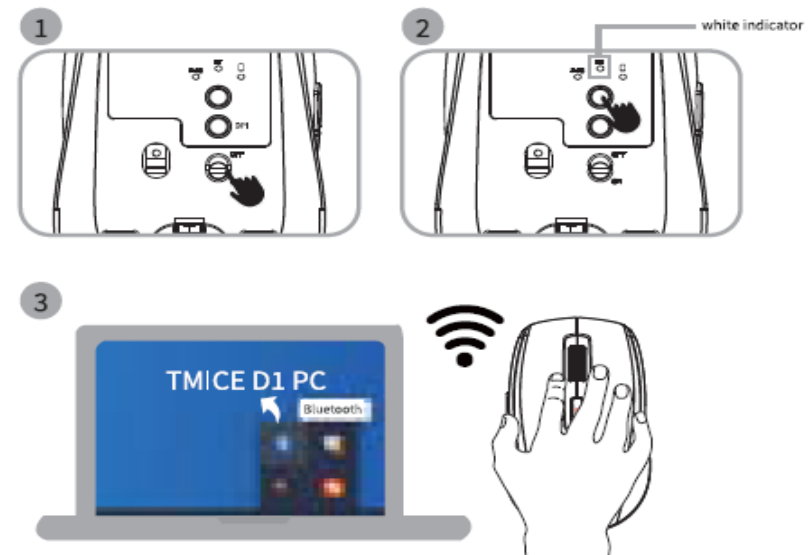


4

2 Connection guide for PC

2. Connected with BT(Bluetooth)

2.1 Turn the power switch to ON, briefly press the mode button to keep it on the BT mode for PC. Hold and press the mode keys for 3 seconds, the white BT indicator for PC will flash. On your PC, open the BT interface and connect "TMICE D1 VIDEO". Connection is completed after the BT indicator is always on.



5

2 Connection guide for PC

2.2 Reset the BT connection.

Keep holding and press the scroll wheel, turn the power switch to ON. The connection is reset after the 2.4G and BT indicators(PC) flash.



TMICE



Connection guide for Phone



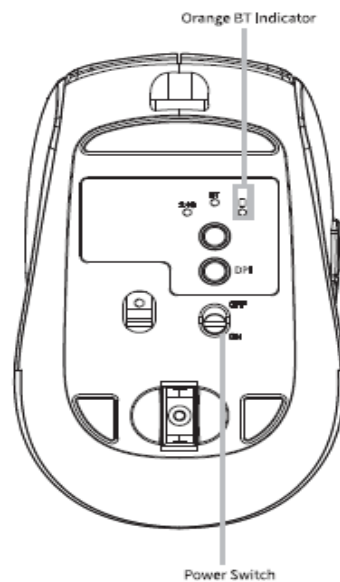
After the boot connection is successful, switch the usage mode of BT1/BT2/2.4G according to the button shown

3 Connection guide for Phone

1. Connected with IOS device

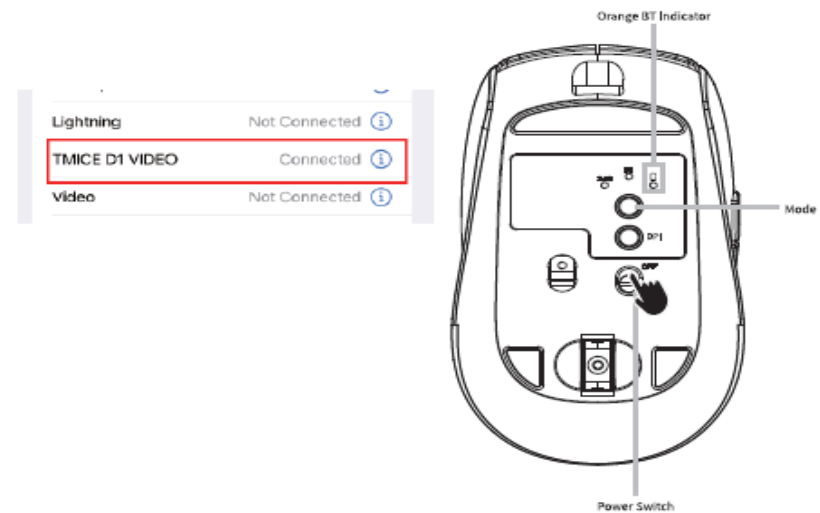
1.1 New IOS device connection

1.1.1 Turn the power switch to ON, the orange BT indicator (Phone) will flash.



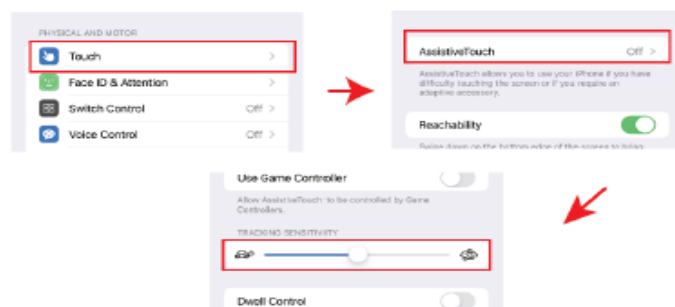
3 Connection guide for Phone

1.1.2 Enter the IOS system settings and open the BT connection interface. Connect "TMICE D1 VIDEO". Connection is completed when the orange indicator keeps on.



3 Connection guide for Phone

1.1.3 After successful connection with the phone, enter the phone system settings and open the Accessibility interface to find the “touch” button. Click the touch button and find the AssistiveTouch button. Open it, then you can find and adjust the “Tracking sensitivity” to the middle position (Tracking sensitivity depends on the size of the phone, and the setting could be slightly different).

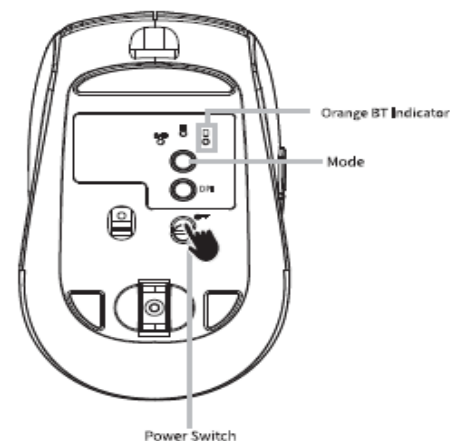


Please note: If the video cannot be played / paused normally when pressing the play/pause button, you are suggested to adjust the “tracking sensitivity” to solve it.

3 Connection guide for Phone

1.2 Other IOS device connection method

1.2.1 Enter the connected IOS system settings, find the BT "TMICE D1 VIDEO" then click Forget This Device. Then the orange bluetooth indicator (Phone) will flash.



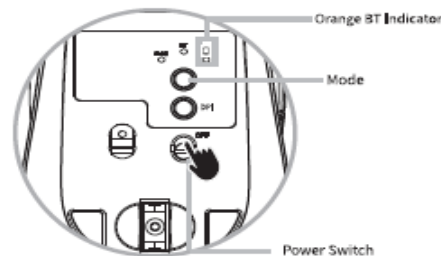
1.2.2 The new device can be connected by referring to the method 1.1.

3 Connection guide for Phone

2. Connected with Android Device

2.1 New Android device connection

2.1.1 Turn the power switch to ON, the orange BT indicator (Phone) will flash.



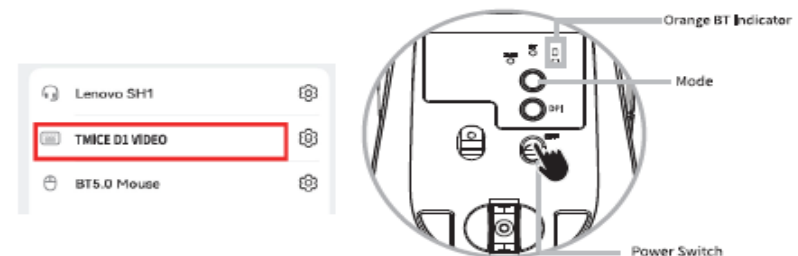
2.1.2 Enter the Android system settings and open the BT connection interface. Connect "**TMICE D1 VIDEO**". Connection is completed when the yellow indicator keeps on.



3 Connection guide for Phone

2.2 Other Android device connection method

2.2.1 Enter the connected Android system settings, find the BT "**TMICE D1 VIDEO**", then click Forget This Device. Then the orange bluetooth indicator (Phone) will flash.

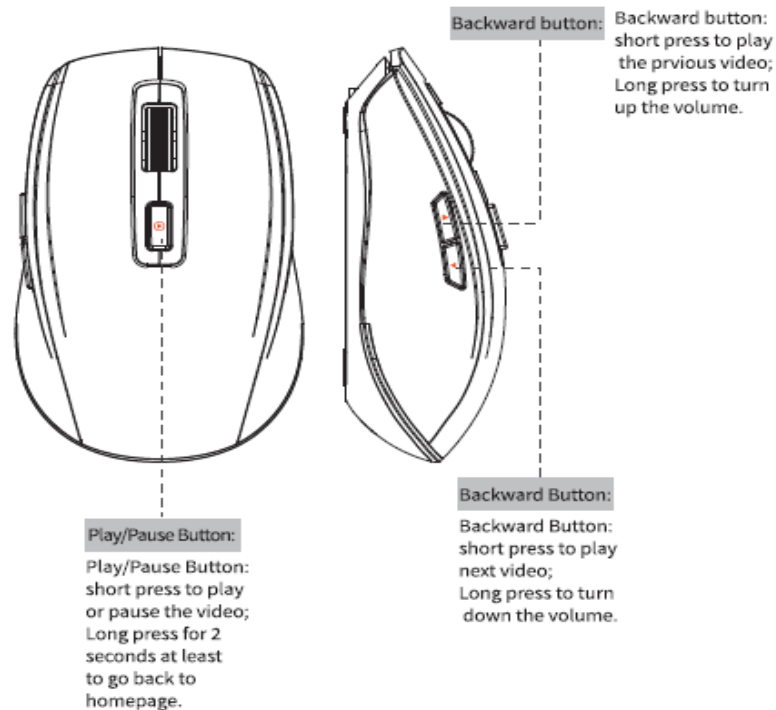


2.2.2 The new device can be connected by referring to the method 2.1.

4 Social media button function

(Applicable to video APP such as TikTok, etc.)

When this mouse is connected with the Phone, following operations are supported in the social media APP.



FCC compliance statement

This device complies with part 15 of the FCC Rules. Operation is subject to the following two conditions:

(1) This device may not cause harmful interference, and (2) this device must accept any interference received, including interference that may cause undesired operation.

Any changes or modifications not expressly approved by the party responsible for compliance could void the user's authority to operate the equipment. This equipment has been tested and found to comply with the limits for a Class B digital device, pursuant to part 15 of the FCC Rules. These limits are designed to provide reasonable protection against harmful interference in a residential installation. This equipment generates, uses and can radiate radio frequency energy and, if not installed and used in accordance with the instructions, may cause harmful interference to radio communications. However, there is no guarantee that interference will not occur in a particular installation. If this equipment does cause harmful interference to radio or television reception, which can be determined by turning the equipment off and on, the user is encouraged to try to correct the interference by one or more of the following measures:

- Reorient or relocate the receiving antenna.
- Increase the separation between the equipment and receiver.
- Connect the equipment into an outlet on a circuit different from that to which the receiver is connected.
- Consult the dealer or an experienced radio/TV technician for help.

1 year limited warranty.

FCC Radiation Exposure Statement:

This equipment complies with FCC radiation exposure limits set forth for an uncontrolled environment .

This transmitter must not be co-located or operating in conjunction with any other antenna or transmitter.

Product specification&Compatibility

Name: Dido Multi-functional Bluetooth Mouse

Model: TKM01A

Size: 108.58*65.84*37.38mm

Weight: 74g

Rated Input: 3.7v

Rated Power: 0.055w

Lithium battery capacity: 500mA

Compatibility



Require:USB Port

-Windows® XP or later

- macOS 10.15 or later



Bluetooth

Require:Bluetooth low-energy consumption

- Windows® 8 or later

- macOS 10.15 or later

- iOS 13.4 or later

User notice

Please read and preserve this manual carefully before using the product.

Symbol Description


To avoid any personal injury or property loss, please be sure to comply with the following contents.


 Don'ts

 Dos


Safety notes

 Do not put it in water.

 It's forbidden for children under three years old to use the product to prevent accidental eating of the parts.

 Do not put the product into fire.

 Do not drop the product intentionally.

 Please charge the product on time if the low power indicator is activated or no lighting when turn the power switch to ON.

TMICE