



User Manual

FERREX[®]

707085

20 V LI-ION MINI GRINDER



Product
Info



<https://help.tools/>

Read all safety warnings and all instructions thoroughly before operating this product.

Ensure you keep your manual in a safe place for future reference.

IM ed 5; 01/2022

QR codes take you where you want to go quickly and easily

Whether you require product information, spare parts or accessories, details on warranties or aftersales service, or if you want to watch a product demonstration video, our QR codes will take you there in no time at all.

What is a QR code?

A QR-code (QR=Quick Response) is a type of matrix that can be read with a smartphone camera and that contains a link to a website or contact details, for example.

Advantage: You are not required to manually enter a website address or contact details.

How it works

To scan the QR code, all you need is a smartphone with QR codes reader software and an Internet connection*. This type of software can be downloaded for free from your smartphone's app store.

Try it out now

Just scan the QR code with your smartphone and find out more about the Aldi product you have purchased*.



* Depending on your tariff you may be charged for the connection.



FERREX[®]

20 V Li-Ion Mini Grinder



Warranty details

REGISTER YOUR PURCHASE AT www.aldi.com.au/en/about-aldi/product-registration/ TO KEEP UP-TO-DATE WITH IMPORTANT PRODUCT INFORMATION.

The product is guaranteed to be free from defects in workmanship and parts for a period of 60 months from the date of purchase. Defects that occur within this warranty period, under normal use and care, will be repaired, replaced or refunded at our discretion. The benefits conferred by this warranty are in addition to all rights and remedies in respect of the product that the consumer has under the Competition and Consumer Act 2010 and similar state and territory laws.

Our goods come with guarantees that cannot be excluded under the Australian Consumer Law. You are entitled to a replacement or refund for a major failure and for compensation for any other reasonably foreseeable loss or damage. You are also entitled to have the goods repaired or replaced if the goods fail to be of acceptable quality and the failure does not amount to a major failure.

AFTER SALES SUPPORT

  1300 889 028
(toll free)

e-mail: info.aldi@positecgroup.com
MODEL No.: CGA18MA.9 • 01/2022 • 707085



Contents

Pack contents /parts	2
Description of symbols	3
General safety instructions	4
Parts list	11
Assembly	13
Operation	16
Switch on/off	16
Hand grip area	16
Cutting	17
Rough grinding	17
Maintenance	18
Cleaning	18
Storage and transportation	19
Warranty	20
Environmental protection	20
What your 5 year warranty means	21
Troubleshooting	21
Technical specifications	22

Pack contents / parts

Congratulations on the purchase of your FERREX® 20 V Li-ion Mini Grinder. When you open your packaging, first remove all items and check there are no parts damaged or missing. If you find anything wrong, do not operate the product until the parts have been replaced or the fault has been rectified. Failure to do so could result in serious personal injury.

Intended use of the 20 V Li-ion Mini Grinder

NOTE: This product is for private domestic DIY use only.

It is not suitable for commercial, industrial or trade use.

Use the 20 V Li-ion Mini Grinder only for cutting, roughing and brushing metal and stone materials without using water. For cutting metal, a special protection guard for cutting (accessory) must be used.

This user manual contains important information on how to use the 20 V Li-ion Mini Grinder. Read this user manual carefully, in particular the safety instructions, before using the product. Failure to follow this user manual may lead to severe injuries or product damage.

Keep this user manual for further reference.

IMPORTANT INFORMATION.

NOTE: First time users or inexperienced operators pay particular attention to the operation of the 20 V Li-ion Mini Grinder, including details of starting and stopping and correct use of the 20 V Li-ion Mini Grinder on pages 16-17, as well as the maintenance instructions on page 18.

Contents of carton

1 x 20 V Li-Ion Mini Grinder skin	1 x Outer guard / Protective guard
3 x Cutting discs (2pcs metal cutting discs + 1 pc diamond cutting disc)	1 x Hex key (5 mm)
1 x Grinding disc	1 x Instruction manual
	1 x Warranty card & Details

Description of symbols

The instruction manual or rating plate on your product may show symbols. These represent important information about the product or instructions on its use.



To reduce the risk of injury, user must read instruction manual



Warning



Wear ear protection



Wear eye protection



Wear dust mask



Wear protective gloves



Not permitted for face grinding with abrasive cutting off wheels



Do not use damaged grinding and cutting discs!



Do not wet grinding!



Conforms to relevant standards for electrical safety and electromagnetic compatibility.



60 Months Warranty Period.



The box is recyclable at the kerbside.

General safety instructions



WARNING! Read all safety warnings and all instructions. Failure to follow the warnings and instructions may result in electric shock, fire and/or serious injury.

Save all warnings and instructions for future reference.

The term “power tool” in the warnings refers to your mains-operated (corded) power tool or battery-operated (cordless) power tool.

1) Work area safety

- a) **Keep work area clean and well lit.** Cluttered or dark areas invite accidents.
- b) **Do not operate power tools in explosive atmospheres, such as in the presence of flammable liquids, gases or dust.** Power tools create sparks which may ignite the dust or fumes.
- c) **Keep children and bystanders away while operating a power tool.** Distractions can cause you to lose control.

2) Electrical safety

- a) **Power tool plugs must match the outlet. Never modify the plug in any way. Do not use any adapter plugs with earthed (grounded) power tools.** Unmodified plugs and matching outlets will reduce risk of electric shock.
- b) **Avoid body contact with earthed or grounded surfaces, such as pipes, radiators, ranges and refrigerators.** There is an increased risk of electric shock if your body is earthed or grounded.
- c) **Do not expose power tools to rain or wet conditions.** Water entering a power tool will increase the risk of electric shock.
- d) **Do not abuse the cord. Never use the cord for carrying, pulling or unplugging the power tool. Keep cord away from heat, oil, sharp edges or moving parts.** Damaged or entangled cords increase the risk of electric shock.
- e) **When operating a power tool outdoors, use an extension cord**

suitable for outdoor use. *Use of a cord suitable for outdoor use reduces the risk of electric shock.*

- f) If operating a power tool in a damp location is unavoidable, use a residual current device (RCD) protected supply.** *Use of an RCD reduces the risk of electric shock.*

3) Personal safety

- a) Stay alert, watch what you are doing and use common sense when operating a power tool. Do not use a power tool while you are tired or under the influence of drugs, alcohol or medication.** *A moment of inattention while operating power tools may result in serious personal injury.*
- b) Use personal protective equipment. Always wear eye protection.** *Protective equipment such as dust mask, non-skid safety shoes, hard hat, or hearing protection used for appropriate conditions will reduce personal injuries.*
- c) Prevent unintentional starting. Ensure the switch is in the off-position before connecting to power source and/or battery pack, picking up or carrying the tool.** *Carrying power tools with your finger on the switch or energising power tools that have the switch on invites accidents.*
- d) Remove any adjusting key or wrench before turning the power tool on.** *A wrench or a key left attached to a rotating part of the power tool may result in personal injury.*
- e) Do not overreach. Keep proper footing and balance at all times.** *This enables better control of the power tool in unexpected situations.*
- f) Dress properly. Do not wear loose clothing or jewellery. Keep your hair, clothing and gloves away from moving parts.** *Loose clothes, jewellery or long hair can be caught in moving parts.*
- g) If devices are provided for the connection of dust extraction and collection facilities, ensure these are connected and properly used.** *Use of these devices can reduce dust-related hazards.*

4) Power tool use and care

- a) Do not force the power tool. Use the correct power tool for your application.** *The correct power tool will do the job better and safer at the rate for which it was designed.*
- b) Do not use the power tool if the switch does not turn it on and off.** *Any power tool that cannot be controlled with the switch is dangerous and must be repaired.*

- c) **Disconnect the plug from the power source and/or the battery pack from the power tool before making any adjustments, changing accessories, or storing power tools.** *Such preventive safety measures reduce the risk of starting the power tool accidentally.*
- d) **Store idle power tools out of the reach of children and do not allow persons unfamiliar with the power tool or these instructions to operate the power tool.** *Power tools are dangerous in the hands of untrained users.*
- e) **Maintain power tools. Check for misalignment or binding of moving parts, breakage of parts and any other condition that may affect the power tool's operation. If damaged, have the power tool repaired before use.** *Many accidents are caused by poorly maintained power tools.*
- f) **Keep cutting tools sharp and clean.** *Properly maintained cutting tools with sharp cutting edges are less likely to bind and are easier to control.*
- g) **Use the power tool, accessories and tool bits etc. in accordance with these instructions, taking into account the working conditions and the work to be performed.** *Use of the power tool for operations different from those intended could result in a hazardous situation.*

5) Battery tool use and care

- a) **Recharge only with the charger specified by the manufacturer.** *A charger that is suitable for one type of battery pack may create a risk of fire when used with another battery pack.*
- b) **Use power tools only with specifically designated battery packs.** *Use of any other battery packs may create a risk of injury and fire.*
- c) **When battery pack is not in use, keep it away from other metal objects, like paper clips, coins, keys, nails, screws or other small metal objects, that can make a connection from one terminal to another.** *Shorting the battery terminals together may cause burns or a fire.*
- d) **Under abusive conditions, liquid may be ejected from the battery; avoid contact. If contact accidentally occurs, flush with water. If liquid contacts eyes, additionally seek medical help.** *Liquid ejected from the battery may cause irritation or burns.*

6) Service

- a) **Have your power tool serviced by a qualified repair person using only identical replacement parts.** *This will ensure that the safety of the power tool is maintained.*

Safety instructions for all operations

Safety warnings common for grinding, or abrasive cutting-off operations:

- a) **This power tool is intended to function as a grinder or cut-off tool. Read all safety warnings, instructions, illustrations and specifications provided with this power tool.** *Failure to follow all instructions listed below may result in electric shock, fire and/or serious injury.*
- b) **Operations such as sanding, wire brushing, polishing are not recommended to be performed with this power tool.** *Operations for which the power tool was not designed may create a hazard and cause personal injury.*
- c) **Do not use accessories which are not specifically designed and recommended by the tool manufacturer.** *Just because the accessory can be attached to your power tool, it does not assure safe operation.*
- d) **The rated speed of the accessory must be at least equal to the maximum speed marked on the power tool.** *Accessories running faster than their rated speed can break and fly apart.*
- e) **The outside diameter and the thickness of your accessory must be within the capacity rating of your power tool.** *Incorrectly sized accessories cannot be adequately guarded or controlled.*
- f) **Threaded mounting of accessories must match the grinder spindle thread. For accessories mounted by flanges, the arbour hole of the accessory must fit the locating diameter of the flange.** *Accessories that do not match the mounting hardware of the power tool will run out of balance, vibrate excessively and may cause loss of control.*
- g) **Do not use a damaged accessory. Before each use inspect the accessory such as abrasive wheels for chips and cracks, backing pad for cracks, tear or excess wear. If power tool or accessory is dropped, inspect for damage or install an undamaged accessory. After inspecting and installing an accessory, position yourself and bystanders away from the plane of the rotating accessory and run the power tool at maximum no-load speed for one minute.**

Damaged accessories will normally break apart during this test time.

- h) Wear personal protective equipment. Depending on application, use face shield, safety goggles or safety glasses. As appropriate, wear dust mask, hearing protectors, gloves and workshop apron capable of stopping small abrasive or workpiece fragments. The eye protection must be capable of stopping flying debris generated by various operations. The dust mask or respirator must be capable of filtering particles generated by your operation. Prolonged exposure to high intensity noise may cause hearing loss.**
- i) Keep bystanders a safe distance away from work area. Anyone entering the work area must wear personal protective equipment. Fragments of workpiece or of a broken accessory may fly away and cause injury beyond immediate area of operation.**
- j) Hold the power tool by insulated gripping surfaces only, when performing an operation where the cutting tool may contact hidden wiring. Contact with a "live" wire will also make exposed metal parts of the power tool "live" and could give the operator an electric shock.**
- k) Never lay the power tool down until the accessory has come to a complete stop. The spinning accessory may grab the surface and pull the power tool out of your control.**
- l) Do not run the power tool while carrying it at your side. Accidental contact with the spinning accessory could snag your clothing, pulling the accessory into your body.**
- m) Regularly clean the power tool's air vents. The motor's fan will draw the dust inside the housing and excessive accumulation of powdered metal may cause electrical hazards.**
- n) Do not operate the power tool near flammable materials. Sparks could ignite these materials.**
- o) Do not use accessories that require liquid coolants. Using water or other liquid coolants may result in electrocution or shock.**

Further safety instructions for all operations

Kickback and related warnings

Kickback is a sudden reaction to a pinched or snagged rotating wheel, backing pad, brush or any other accessory. Pinching or snagging causes rapid stalling of the rotating accessory which in turn causes the uncontrolled power tool to be forced in the direction opposite of the accessory's rotation at the point of the binding.

For example, if an abrasive wheel is snagged or pinched by the workpiece, the edge of the wheel that is entering into the pinch point can dig into the surface of the material causing the wheel to climb out or kick out. The wheel may either jump toward or away from the operator, depending on direction of the wheel's movement at the point of pinching. Abrasive wheels may also break under these conditions.

Kickback is the result of power tool misuse and/or incorrect operating procedures or conditions and can be avoided by taking proper precautions as given below.

- a) Maintain a firm grip on the power tool and position your body and arm to allow you to resist kickback forces. Always use auxiliary handle, if provided, for maximum control over kickback or torque reaction during start-up.** *The operator can control torque reactions or kickback forces, if proper precautions are taken.*
- b) Never place your hand near the rotating accessory.** *Accessory may kickback over your hand.*
- c) Do not position your body in the area where power tool will move if kickback occurs.** *Kickback will propel the tool in direction opposite to the wheel's movement at the point of snagging.*
- d) Use special care when working corners, sharp edges etc. Avoid bouncing and snagging the accessory.** *Corners, sharp edges or bouncing have a tendency to snag the rotating accessory and cause loss of control or kickback.*
- e) Do not attach a saw chain woodcarving blade or toothed saw blade.** *Such blades create frequent kickback and loss of control.*

Safety warnings specific for grinding and abrasive cutting-off operations:

- a) Use only wheel types that are recommended for your power tool and the specific guard designed for the selected wheel.** *Wheels for which the power tool was not designed cannot be adequately guarded and are unsafe*
- b) The grinding surface of centre depressed wheels must be mounted below the plane of the guard lip.** *An improperly mounted wheel that projects through the plane of the guard lip cannot be adequately protected.*
- c) The guard must be securely attached to the power tool and positioned for maximum safety, so the least amount of wheel is exposed towards the operator.** *The guard helps to protect the operator from broken wheel fragments, accidental contact with wheel and sparks*

that could ignite clothing.

- d) Wheels must be used only for recommended applications. For example: do not grind with the side of cut-off wheel.** *Abrasive cut-off wheels are intended for peripheral grinding, side forces applied to these wheels may cause them to shatter.*
- e) Always use undamaged wheel flanges that are of correct size and shape for your selected wheel.** *Proper wheel flanges support the wheel thus reducing the possibility of wheel breakage. Flanges for cut-off wheels may be different from grinding wheel flanges.*
- f) Do not use worn down wheels from larger power tools.** *Wheel intended for larger power tool is not suitable for the higher speed of a smaller tool and may burst.*

Additional safety warnings specific for abrasive cutting-off operations:

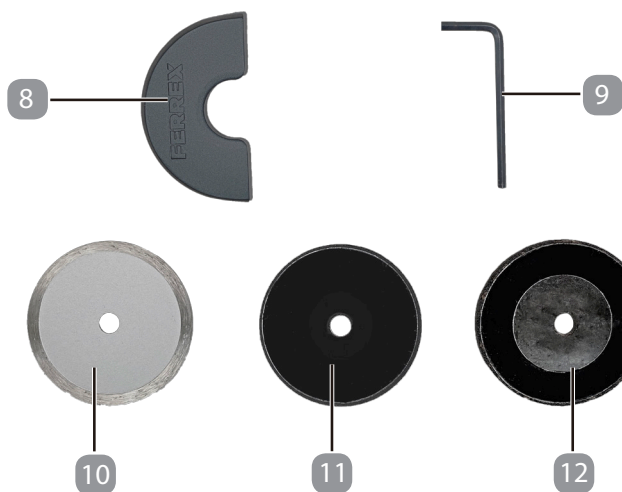
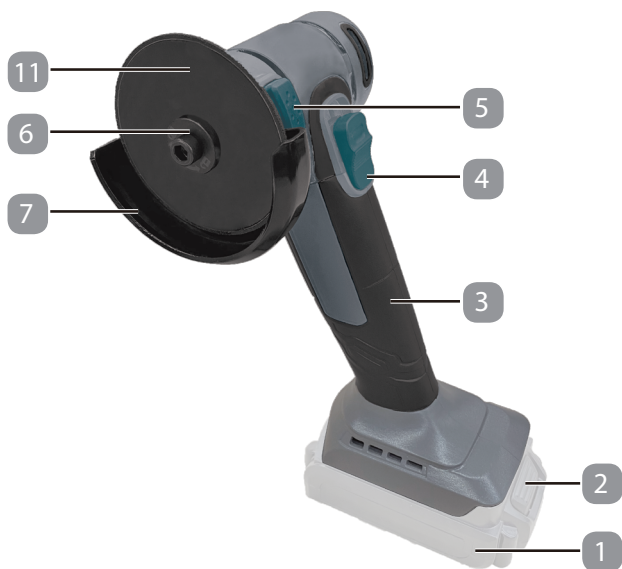
- a) Do not “jam” the cut-off wheel or apply excessive pressure. Do not attempt to make an excessive depth of cut.** *Overstressing the wheel increases the loading and susceptibility to twisting or binding of the wheel in the cut and the possibility of kickback or wheel breakage.*
- b) Do not position your body in line with and behind the rotating wheel.** *When the wheel, at the point of operation, is moving away from your body, the possible kickback may propel the spinning wheel and the power tool directly at you.*
- c) When wheel is binding or when interrupting a cut for any reason, switch off the power tool and hold the power tool motionless until the wheel comes to a complete stop. Never attempt to remove the cut-off wheel from the cut while the wheel is in motion otherwise kickback may occur.** *Investigate and take corrective action to eliminate the cause of wheel binding.*
- d) Do not restart the cutting operation in the workpiece. Let the wheel reach full speed and carefully re-enter the cut.** *The wheel may bind, walk up or kickback if the power tool is restarted in the workpiece.*
- e) Support panels or any oversized workpiece to minimize the risk of wheel pinching and kickback.** *Large workpieces tend to sag under their own weight. Supports must be placed under the workpiece near the line of cut and near the edge of the workpiece on both sides of the wheel.*
- f) Use extra caution when making a “pocket cut” into existing walls or other blind areas.** *The protruding wheel may cut gas or water pipes, electrical wiring or objects that can cause kickback.*

Parts list

1. Battery pack *
2. Battery pack release button *
3. Hand grip area
4. On/off switch
5. Spindle lock button
6. Clamping bolt with washer
7. Inner guard / Wheel guard for grinding
8. Outer guard / Protective guard
9. Hex key (5 mm)
10. Diamond cutting disc
11. Metal cutting disc
12. Metal grinding disc

* Battery is not included. Shown only for illustrative purposes.

20 V Li-ion Mini Grinder



Assembly



WARNING: Before undertaking any maintenance, service, or changing a disc on the grinder itself, remove the battery pack.

1. Mounting the wheel guard



WARNING: For work with grinding or cutting discs, the outer guard / protective guard (8) must be mounted. Use the correct type of disc for your application.

- Wheel guard for cutting

Fix the outer guard / protective guard (8) onto the inner guard / wheel guard for grinding (7) until it engages. The wheel guard for grinding (7) and outer guard / protective guard (8) assemble together and make up a wheel guard for cutting. (See Fig. A1)

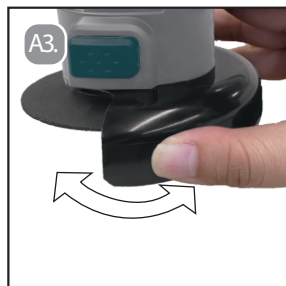
NOTE: Ensure the clip on each side of the outer guard / protective guard (8) are latched onto the inner guard / wheel guard for grinding (7).

- Wheel guard for grinding

Simply remove the outer guard / protective guard (8). The grinder is ready to be used for grinding. (See Fig. A2)

- Adjusting the wheel guard

Turn the inner guard / wheel guard for grinding (7) to the desired position until it engages. No tool is required for this. (See Fig. A3)



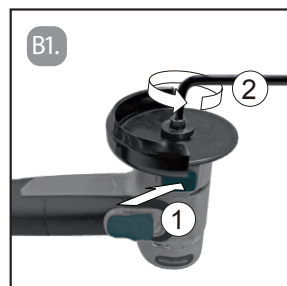
2. Assembling/Replacing the disc (grinding disc, metal cutting disc or diamond cutting disc)


 **WARNING:** Do not touch grinding and cutting discs before they have cooled down. The discs can become very hot while working.

 **WARNING:** Before undertaking any maintenance, service, or changing a disc on the grinder itself, remove the battery pack.

- Removing a disc

- 1) Clean the spindle and all parts to be mounted.
- 2) Press and hold the spindle lock button (5) to lock the spindle. You may need to rotate the spindle using the provided hex key (9) if the spindle lock button (5) cannot be pressed down fully.
- 3) Loosen the clamping bolt with washer (6) by turning it anti-clockwise using the provided hex key (9).
- 4) Remove the clamping bolt with washer (6) and the disc. (See Fig. B1)



 **WARNING:** Press the spindle lock button only when the grinder spindle is at a standstill. Otherwise, the mini grinder may become damaged.

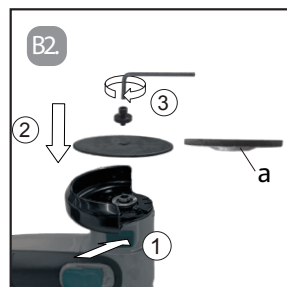
- Fitting a disc

NOTE: When fitting a disc for the first time, follow steps 2 - 4 above before applying the disc.

- 1) Place the disc on the tool spindle. Ensure it is correctly located.

NOTE: When installing the grinding disc, make sure that the convex surface (a) is facing down.

- 2) Insert the clamping bolt with washer (6) through the centre of the disc and onto the spindle.
- 3) Press and hold the spindle lock button (5) to lock the spindle. You may need to rotate the spindle using the provided hex key (9) if the spindle lock button (5) cannot be pressed down fully.
- 4) Tighten the clamping bolt with washer (6) by turning it clockwise using the provided hex key (9). Make sure that the cutting disc (10/11)/grinding disc (12) is assembled firmly. (See Fig. B2)





WARNING: After mounting the grinding/ cutting disc and before switching on, check that the disc is correctly mounted and that it can turn freely. Make sure that the disc does not graze against the wheel guard or other parts.

3. Dust/Chip extraction

Dust from materials such as lead-containing coatings, some wood types, minerals and metal can be harmful to one's health. Touching or breathing-in the dust can cause allergic reactions and/or lead to respiratory infections of the user or bystanders.

Certain dust, such as oak or beech dust, is considered carcinogenic, especially in connection with wood treatment additives (chromate, wood preservative).

Materials containing asbestos may only be worked by specialists.

- Provide for good ventilation of the working place.
- It is recommended to wear a P2 filter-class respirator.

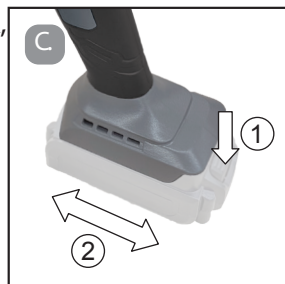
Observe the relevant regulations in your country for the materials to be worked. Prevent dust accumulation at the workplace. Dust can easily ignite.

4. Removing or installing the battery pack *



WARNING: Before inserting the battery pack, make sure that the on/off switch is in OFF position.

Depress the battery pack release button (2) to release and slide the battery pack (1) out from the mini grinder. After recharging the battery, slide the battery pack back into the mini grinder. A simple push and slight pressure will be sufficient. (See Fig. C)



* Battery is not included with this product

Operation

1. Switch on/off

- Switching on

Move the on/off switch (4) forward to the grinder head and press the front part of the on/off switch (4) down until it latches. Then you can release the on/off switch (4). The grinder is now locked on for continuous use. (See Fig. D1)

- Switching off

Push down the back of the on/off switch (4) and move the on/off switch (4) backwards to the rear of the tool to switch off. (See Fig. D2)

2. Hand grip area

Hold the mini grinder firmly when operating as shown in Fig. E.



Residual risk

Even if you use the 20 V Li-ion Mini Grinder properly per the instructions provided and following all safety notes, there are always residual risks. The following risk may occur:

- Accidental Starting: Always remove the battery pack from the tool before carrying out any adjustment, servicing or maintenance. When not in use, store the device in a safe, dry, clean environment. Reduce residual risks by using the 20 V Li-ion Mini Grinder with care and following all safety notes as well as other instructions.



WARNING: Before use, check whether your national regulations restrict the use of the device.

3. Cutting



WARNING: For cutting, always work with the outer guard / protective guard (8).

When cutting, work with moderate feed, adapted to the material being cut. Do not exert pressure onto the cutting disc, tilt or oscillate the machine.

Do not reduce the speed of running down cutting discs by applying sideward pressure.

The machine must always work in an up-grinding motion. Otherwise, the danger exists of it being pushed uncontrolled out of the cut.

When cutting profiles and square bar, it is best to start at the smallest cross section. (See Fig. F)

NOTE: For cutting stone, concrete or tile, always use the diamond cutting disc. For cutting metal, always use the metal cutting disc.



4. Rough grinding



WARNING: Never use a cutting disc for rough grinding applications. This can cause bodily damage by using the mini grinder for wrong applications.



WARNING: Do not switch the grinder on whilst the disc is in contact with the workpiece. Allow the disc to reach full speed before starting to grind.

Always position the guard so that as much of the exposed disc as possible is pointing away from you. Be prepared for a stream of sparks when the disc touches the metal.

For best tool control, material removal and minimum overloading, maintain an angle between the disc and work surface of approximately 15°-30° when grinding. Use caution when working into corners as contact with the intersecting surface may cause the grinder to jump or twist.

When grinding is complete allow the workpiece to cool. (See Fig. G)



Maintenance

Remove the battery pack from the machine before carrying out any adjustment, servicing, cleaning or maintenance.

NOTE: This product is not suitable for repair or maintenance work by the unskilled person. The following detail explains how the product is cleaned, and basic maintenance / safety checks.

Avoid using solvents when cleaning plastic parts. Most plastics are susceptible to damage from various types of commercial solvents and may be damaged by their use. Use clean cloths to remove dirt, dust, oil, grease, etc.

Do not at any time let brake fluids, petrol, petroleum-based products, penetrating oils, etc., come in contact with plastic parts. Chemicals can damage, weaken or destroy plastic which can result in serious personal injury.

Cleaning



WARNING. Water or other liquids that have entered the housing can cause a short circuit. Do not immerse the mini grinder in water or other liquids.



WARNING. Make sure that no water or other liquids get into the housing.



WARNING. Do not use aggressive cleaning agents, brushes with metal or nylon bristles, or sharp or metallic cleaning objects such as knives, hard spatulas and the like. These can damage the surfaces.

- 1) Turn off the mini grinder. Wait until the device stops completely.
- 2) Remove the battery pack (1).
- 3) Clean the mini grinder with a soft cloth or brush.

Storage and transportation

Storage

- 1) Remove the battery pack (1).
- 2) Clean the mini grinder as described previously.
- 3) Store the mini grinder and its accessories in a dry, frost-free, well-ventilated place. Protect the mini grinder from direct sunlight.
- 4) We recommend using the original package for storage or covering the mini grinder with a proper cloth or enclosure to protect it against dust.

Transportation

- 1) Switch the mini grinder off and remove the battery pack (1) before transporting.
- 2) Always carry the mini grinder by its handle.
- 3) Protect the mini grinder from any heavy impact or strong vibrations which may occur during transportation in vehicles.
- 4) Secure the mini grinder to prevent it from slipping or falling over.

Warranty

Your new FERREX® 20 V Li-ion Mini Grinder will more than satisfy your expectations. It has been manufactured under stringent FERREX®. Quality Standards to meet superior performance criteria.

You will find your new 20 V Li-ion Mini Grinder easy and safe to operate, and, with proper care, it will give you many years of dependable service.

CAUTION. Carefully read through this entire instruction manual before using your new FERREX® 20 V Li-ion Mini Grinder.

Take special care to heed the Cautions and Warnings.

Your FERREX® 20 V Li-ion Mini Grinder has many features that will make your job faster and easier. Safety, performance, and dependability have been given top priority in the development of this FERREX® 20 V Li-ion Mini Grinder, making it easy to maintain and operate.

Use only FERREX® replacement parts for your product.

Non-conforming parts or modifications made to parts will void your warranty.

Environmental protection



Recycle unwanted materials instead of disposing of them as waste. All tools, hoses and packaging should be sorted, taken to the local recycling centre and disposed of in an environmentally safe way.

Disposing of the packaging

Please make sure that the packaging is disposed of in an environmentally friendly way.

Disposing of the product

If the product should no longer work at all, please make sure that it is disposed of in an environmentally friendly way and according to local regulations.

What your 5 year warranty means

Great care has gone into the manufacture of this product and it should therefore provide you with years of good service when used properly.

In the event of product failure within its intended use over the course of the first 5 year after the date of purchase, we will remedy the problem as quickly as possible once it has been brought to our attention. In the unlikely event of such an occurrence, or if you require any information about the product please contact us via our after sales support services, details of which can be found in this manual and on the product itself. After Sales Support TEL: 1300 889 028 or email: info.aldi@positecgroup.com

Troubleshooting

Problem	Possible Cause	Corrective Action
The mini grinder will not operate.	Battery pack (1) discharged.	Check the battery pack (1).
	Battery capacity is low.	Charge the battery pack (1).
	Battery pack (1) is too hot/cold.	Allow to cool/warm.
The motor is overheating.	Cooling vents may be obstructed by dust or other obstacles.	Clean and clear vents. Do not cover with hand during operation.
Disc wobbles or vibrates.	The clamping bolt (6) is not tightened.	Tight the clamping bolt (6).
	The disc is ill located on the spindle.	Locate the disc correctly on the spindle.

20 V Li-ion Mini Grinder

The mini grinder's performance decreases.	Damaged disc.	Use a new disc.
---	---------------	-----------------

For further inquiries or issues associated with your 20 V Li-ion Mini Grinder, call our Customer Service on 1300 889 028 or email us at info.aldi@positecgroup.com

Technical specifications

Rated voltage	20 V d.c.
No-load speed	19500 rpm
Spindle thread	M 6
Wheel diameter	76 mm
Wheel thickness (max)	4 mm
Disc bore	10 mm
Cutting capacity	Steel plate 1.2mm Rebar ø14mm
Max cutting depth	14.5mm
Product dimensions	245*90*125 mm
Machine weight	0.78 kg

This 20V Mini Grinder is compatible only with the ALDI range of 20V Xfinity Plus Batteries and Chargers, which can be purchased at your local ALDI store.

This 20 V Li-ion Mini Grinder complies with the following standards:

Safety:	AS/NZS 60745.1 AS/NZS 60745.2.3
EMC:	AS CISPR 14.1

This is a blank page

This is a blank page



ALDI guarantees that our exclusive brand products are developed to our stringent quality specifications. If you are not entirely satisfied with this product, please return it to your nearest ALDI store, within 60 days from the date of purchase, for a full refund or replacement, or take advantage of our after sales support by calling the supplier's Customer Service Hotline.



Made in China

FERREX® is a registered trademark of ALDI Stores

DISTRIBUTED BY:

ALDI STORES

1 SARGENTS ROAD

MINCHINBURY NSW 2770

www.aldi.com.au

AFTER SALES SUPPORT



1300 889 028 (toll free)

e-mail: info.aldi@positecgroup.com

MODEL: CGA18MA.9 • 01/2022 • 707085

5

YEAR WARRANTY