

LEFTON

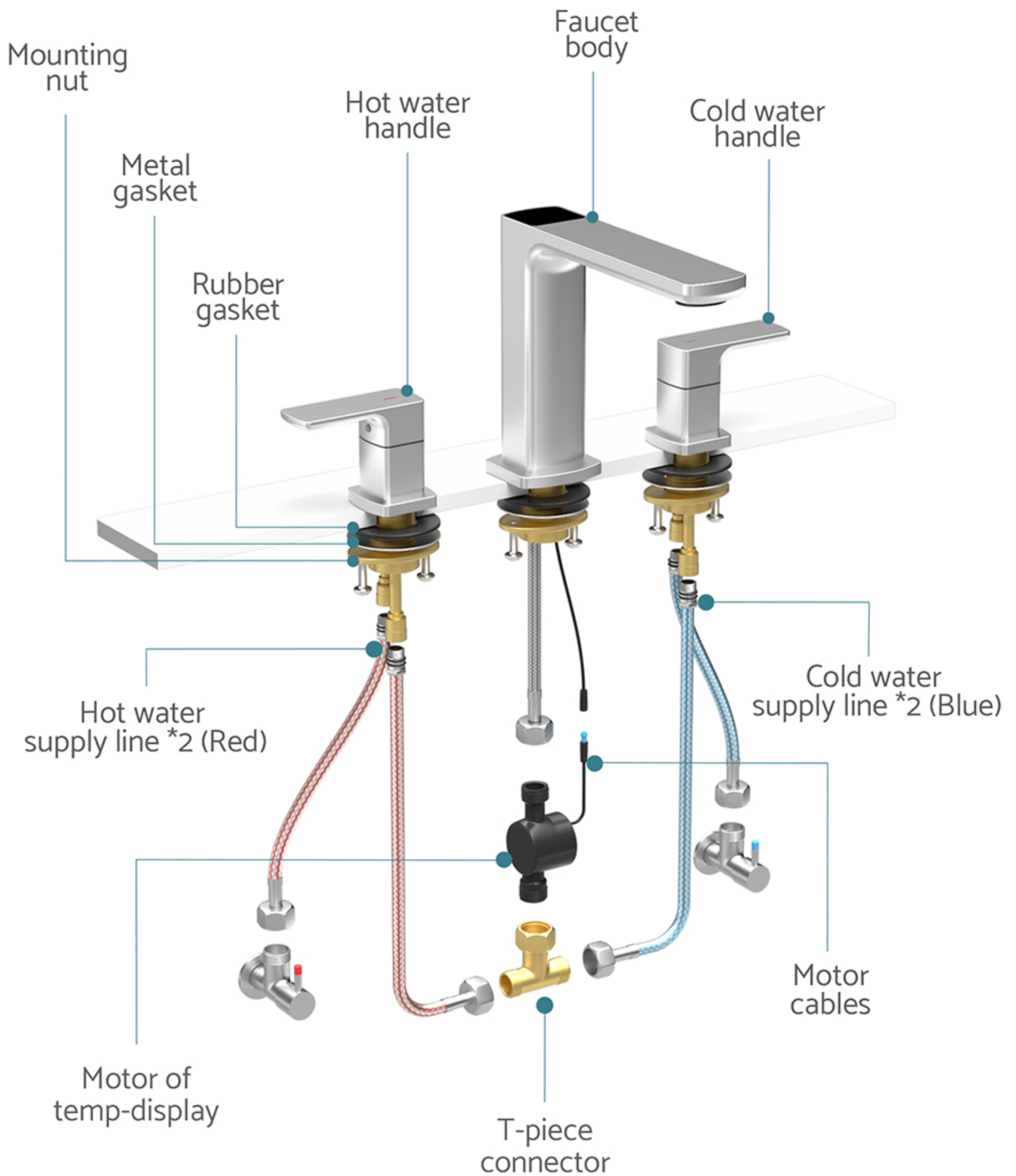
INSTALLATION MANUAL



3 Hole Bathroom Faucet with
Temperature Display

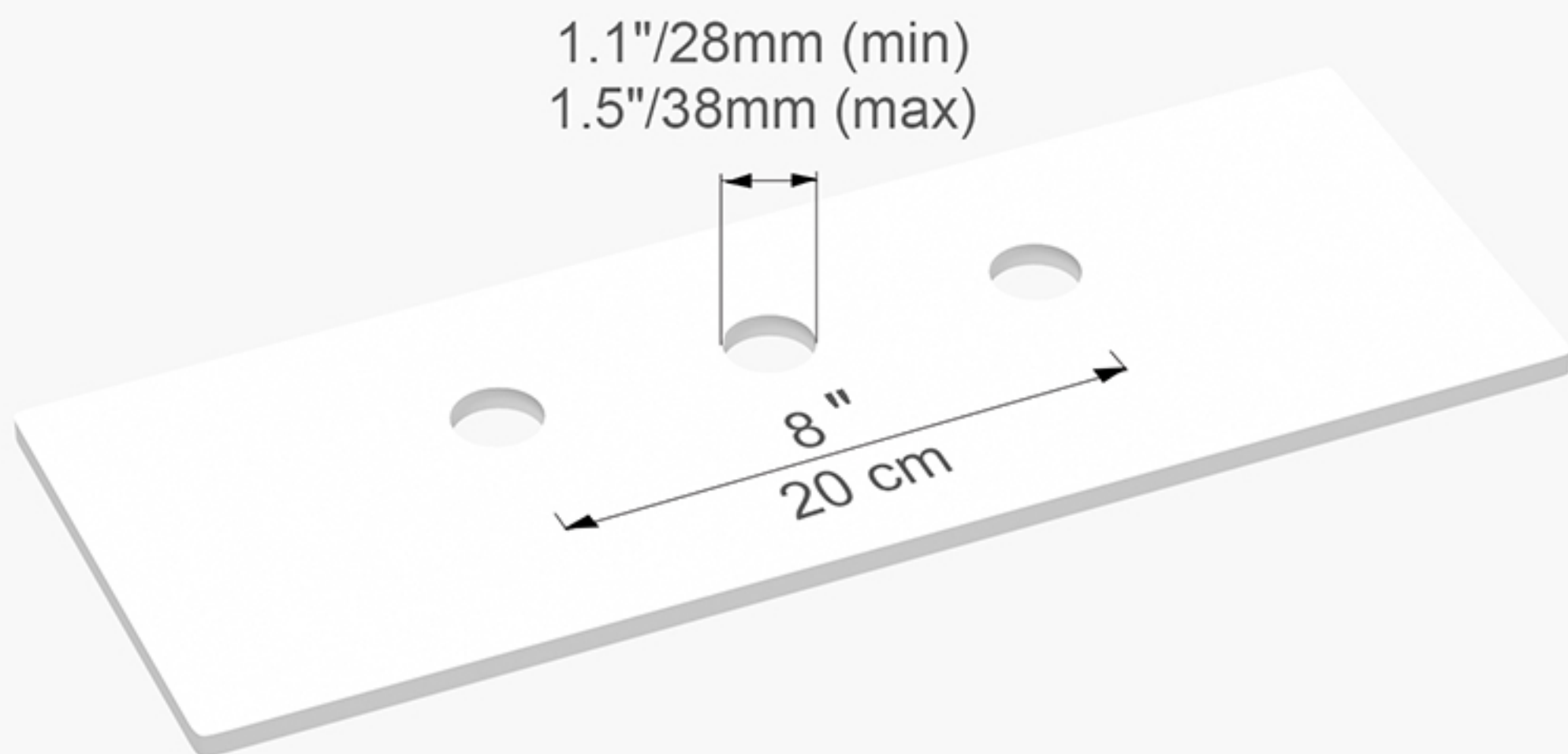
BFWS2402

Diagram and Parts List



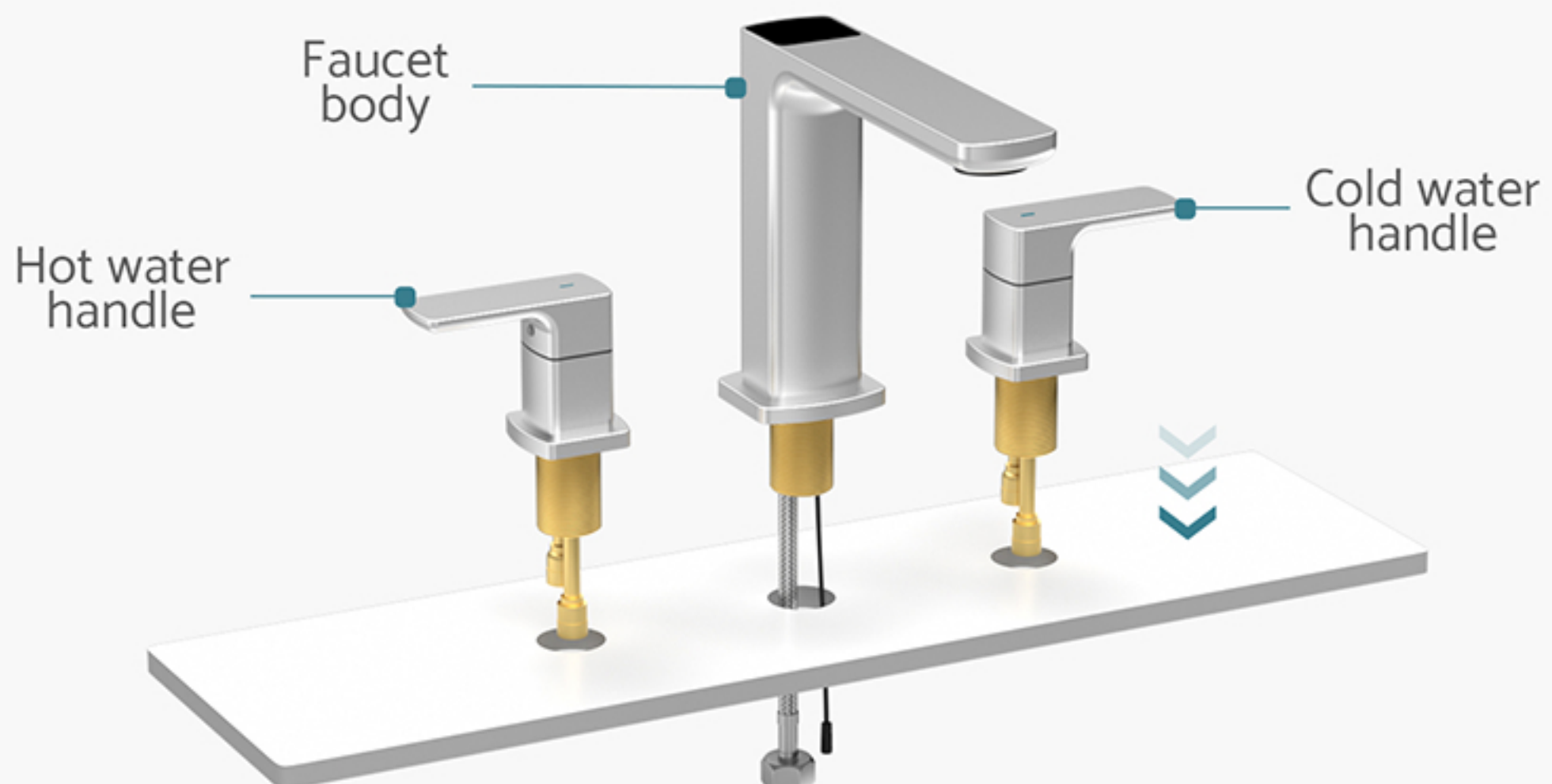
STEP 1:

Countertop opening size diagram.



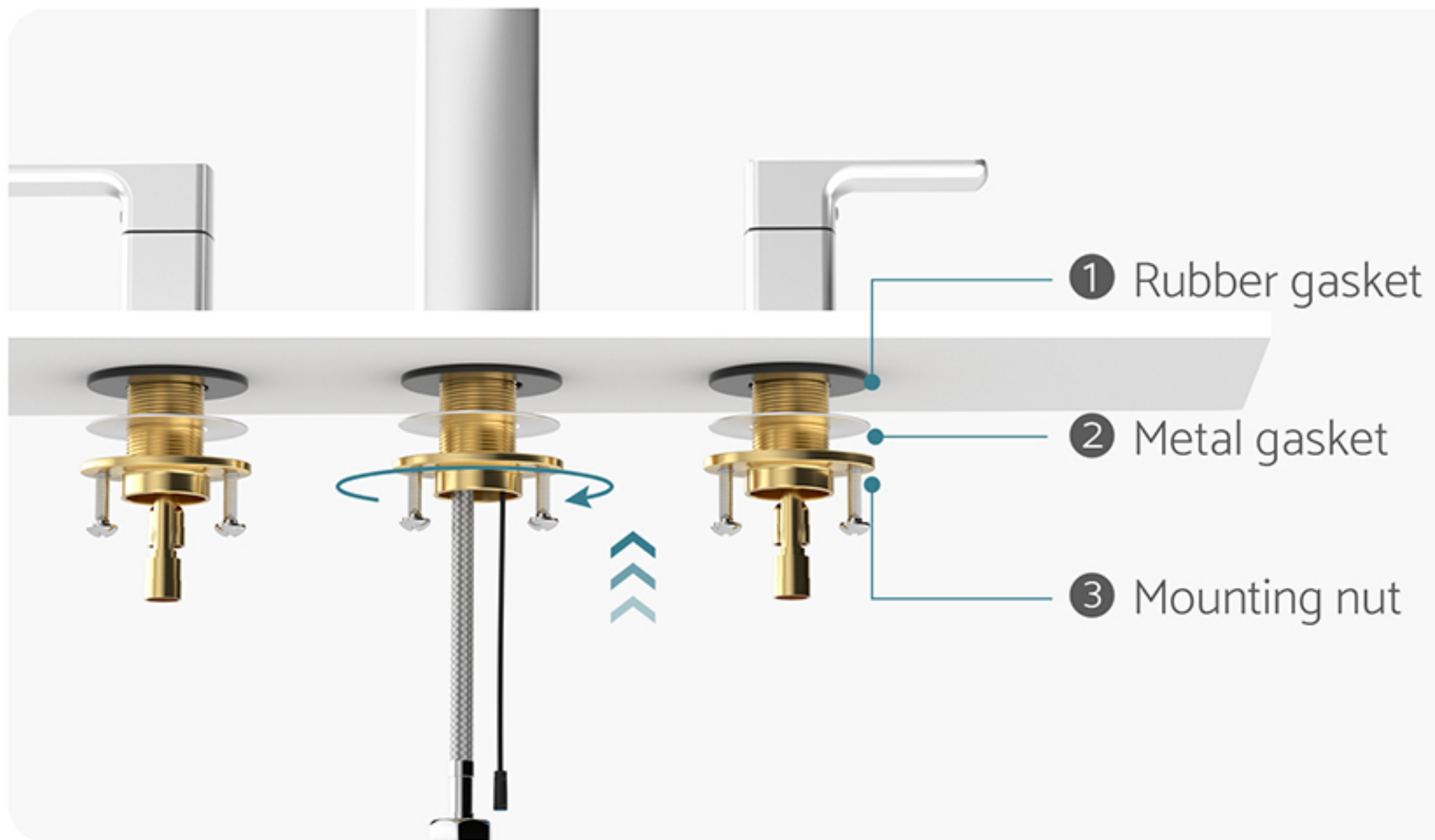
STEP 2:

Install the faucet to the countertop.



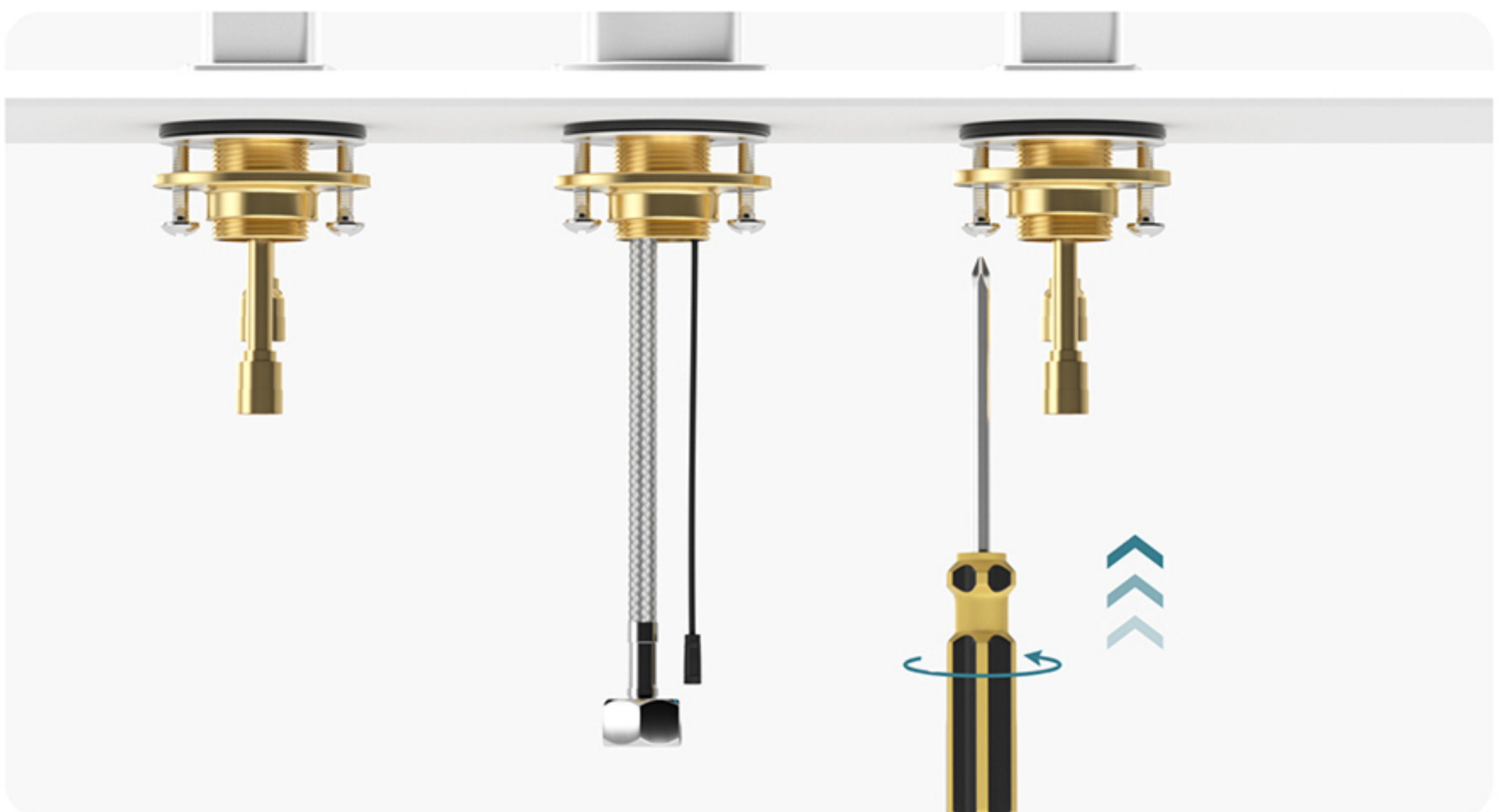
STEP 3:

Install gaskets, nut and fasten the screws.



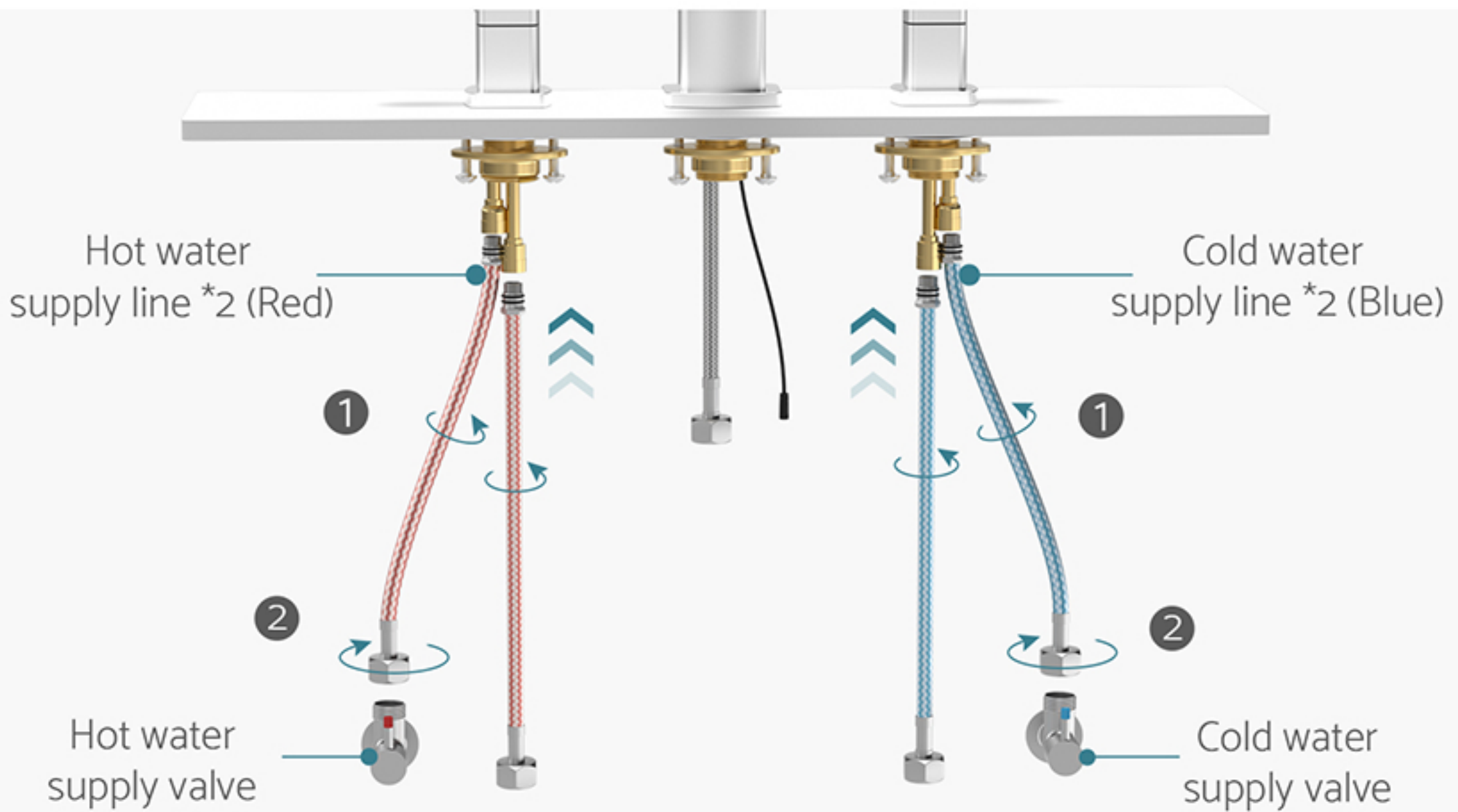
STEP 4:

Fasten the screws with the screwdriver.



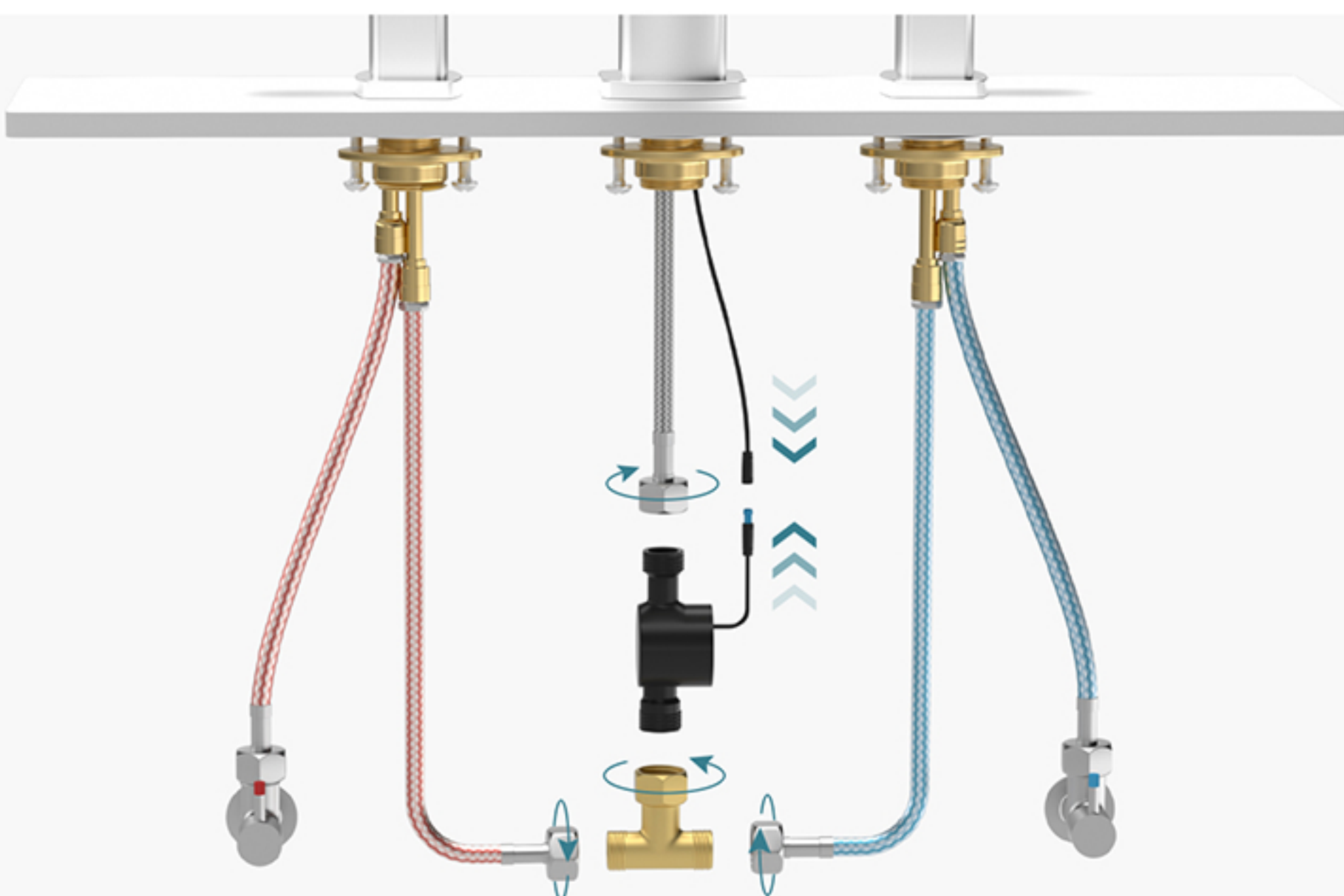
STEP 5:

Connect the Hot, Cold water lines, and tighten them clockwise.



STEP 6:

Connect the Motor , Cables and T-piece connector.



STEP 7:

Turn the faucet on and check for leaks.
(Do not turn faucet on before the installation is complete)



Comprehensive installation diagram

