

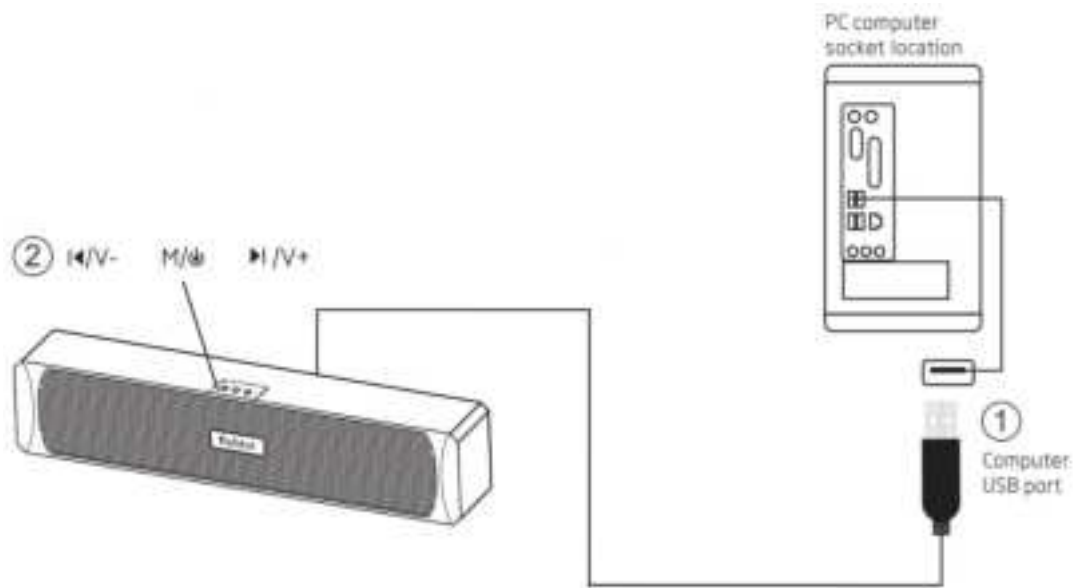
# User Manual



**BOBTOT**

**Computer Speaker**

## 1. Connect Operation



△ Single USB cable plug into computer USB port to ensure power supply.


## 2. Button Control

- Short press the button to turn down the volume;  
Long hold the button for 2 seconds to the previous song.
- Long hold the button for 3 seconds to Power On or Power Off;  
Short press the button to switch the RGB Led light mode till Turn Off the light.  
Quick double-click the button to switch between computer audio sound and Bluetooth mode.  
(When directly plug in the USB wall charger, only Bluetooth mode)
- Short press the button to turn up the volume;  
Long press the button for 2 seconds to the next song


### **3. Does the Computer Speaker Include Battery?**

The computer speaker doesn't have a built-in battery, please insert the USB plug in the USB port of the desktop, laptop, tablet, power bank or USB wall charger to ensure power supply.

### **4. Wired Connection via USB Plug to Computer/Laptop**

- ① Connect the USB cable to desktop or laptop USB port for power supply, long press the  button about 3s to turn on the power, the prompt sound "power on".
- ② When LED light flashes, the speaker is on and ready for work, just need to confirm that whether your device has already set the speaker as the output sound device.

### **5. How to Enter the Bluetooth Mode?**

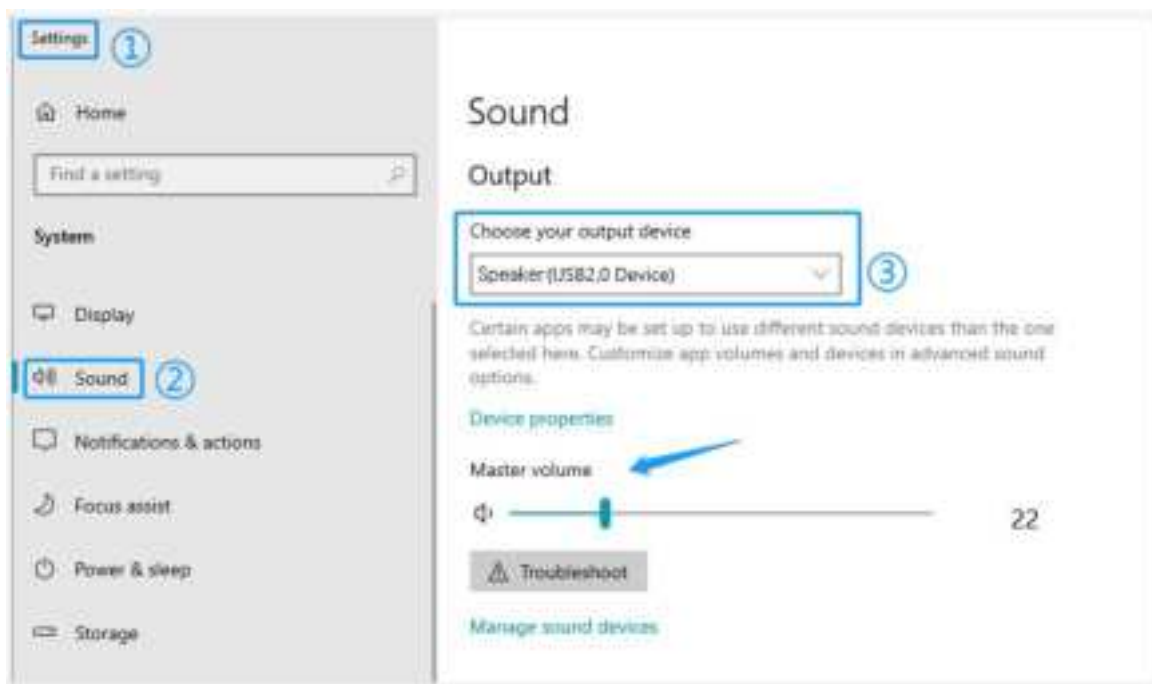
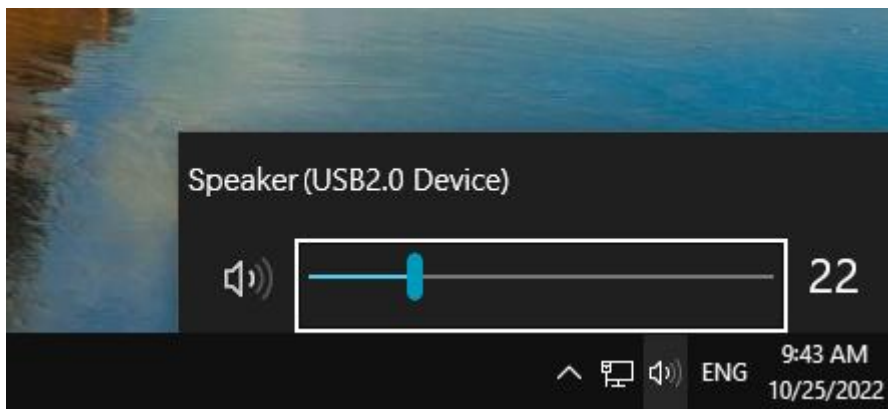
- ① When the speaker is working as an output device for the computer or laptop, quick double-click the  button on the top, you could hear "du du du", it means go to the Bluetooth Mode, then you could search "A8" and connect it.
- ② When the speaker plug in the USB charger or power bank, only in Bluetooth Mode, so you could directly turn on the Bluetooth of you device, search for "A8" and connect, the prompt sound "connected".

# ☆Trouble Shooting Guide


## 1. No Sound Output

If there is no sound response after plugging it into the computer USB port, please make sure the following things right:

- ① The USB interface of your computer can work normally or not?
- ② The audio driver of your computer sound is up to date or not?
- ③ Click the "Speaker" icon in the taskbar, make sure that " Speaker(USB2.0 Device)" is selected as your computer's playback device.



## **2. Can not Work with Bluetooth**

- ① If the USB port plug in the computer or laptop, please don't forget to switch into Bluetooth Mode (quick double-click the  button to switch)
- ② Make sure the Bluetooth of the speaker is not connected by other devices.
- ③ Unplug the USB from your device, delete "A8" memorized on your device, then search for "A8" and connect again.

**Tips:** We suggest to directly plug the USB port in the USB Wall Charger to check the Bluetooth Function.

If it still doesn't work after the above inspection, please contact us for more details and further instructions via **Amazon message** on your order page or email to [bobtot-us@bobtot.net](mailto:bobtot-us@bobtot.net)

**Bobtot is committed to providing the best purchasing experience to our valued customers. Your satisfaction is our greatest pursuit!**